



FEATURES

- 1.5" Low Profile, 4"X6" Footprint
- Universal Input : 90 ~ 264Vac
- Active PFC Meets EN61000-3-2
- EMI Meets CISPR/FCC Class B
- High Efficiency at 80% Typical
- Current Share
- Remote Voltage Sense
- AC OK Signal (Logic High)
- DC OK Signal (Logic High)
- PS ON/OFF Remote Control (Inhibit PSU by adding Logic High)

NOTE

- 1: Optional function can be added when ordering:
Top Cover with Fan (when forced air is needed)
- 2: Add a 0.1uF ceramic capacitor and a 47uF E.L. capacitor to output for Ripple & Noise measuring @20MHz BW.
- 3: Voltage accuracy is set at 60% rated load and 25°C Ta.
- 4: Line regulation is measured from High Line to Low Line with rated load.
- 5: Load regulation is measured at 60%±40% rated load.
- 6: Dimensions tolerance : +/- 1mm.
- 7: Connectors:
CN1(AC Input) : Molex 5273-05A or equivalent
CN2(DC Output) : Molex 38700-7504 or equivalent
CN6(Signals) : Molex 70247-10 or equivalent
CN3,CN4,CN5(FAN) : Molex 5045-02A or equivalent

SPECIFICATIONS

Input Characteristics

| | |
|------------------|----------------------------|
| AC Input Voltage | 90 ~ 264Vac |
| Frequency | 47 to 63Hz |
| Inrush Current | 60A Max. |
| EMI | CISPR/FCC Class B |
| Isolation | Input to output = 4,242Vdc |
| Leakage Current | 3.5mA max. |

Output Characteristics

| | |
|-----------------------------|--|
| Total Rated Output Power | 200W (with 30CFM air flow or optional fan) |
| Current Share | Single wire current sharing |
| Remote Voltage Sense | Compensates for wire voltage drop |
| Hold-up Time | 16mS typ. |
| Over Voltage Protection | Recycle AC input to restart |
| Over Temperature Protection | Auto Recovery |
| Short Circuit Protection | Auto Recovery |

Environmental Characteristics

| | |
|-----------------------|--|
| Operating Temperature | 0 ~ 70 degrees C 50~70 C with 2.5%/ degrees C derating PSU will be in thermal protection for exceeding the rated power output or the operating temperature |
| Storage Temperature | -20 ~ 85 C |

Mechanical Outline

| | |
|-------------------|--|
| Standard U Frame | 150mmx100mmx38.1mm (5.91"*3.94"*1.5") |
| With Optional Fan | 150mmx101.6mmx58.5mm (5.91"*4"*2.3") |

| Model | Output Voltage | Output Current (A) | | Ripple & Noise | Voltage Accuracy | Line Reg. | Load Reg. |
|-----------|----------------|--------------------|------|----------------|------------------|-----------|-----------|
| | | Rated | Min. | | | | |
| AC200-033 | +3.3V | 40.0 | 0 | 1% | ±1% | ±1% | ±1% |
| AC200-050 | +5.0V | 40.0 | 0 | 1% | ±1% | ±1% | ±1% |
| AC200-120 | +12V | 16.7 | 0 | 1% | ±1% | ±1% | ±1% |
| AC200-150 | +15V | 13.4 | 0 | 1% | ±1% | ±1% | ±1% |
| AC200-180 | +18V | 11.2 | 0 | 1% | ±1% | ±1% | ±1% |
| AC200-240 | +24V | 8.4 | 0 | 1% | ±1% | ±1% | ±1% |
| AC200-280 | +28V | 7.2 | 0 | 1% | ±1% | ±1% | ±1% |
| AC200-300 | +30V | 6.7 | 0 | 1% | ±1% | ±1% | ±1% |
| AC200-360 | +36V | 5.6 | 0 | 1% | ±1% | ±1% | ±1% |
| AC200-480 | +48V | 4.2 | 0 | 1% | ±1% | ±1% | ±1% |

DRAWINGS: (Preliminary)

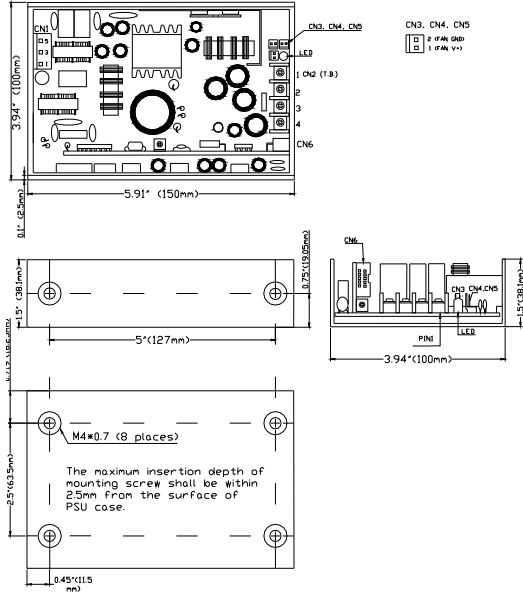


Fig. 1. Mechanical Outline of AC200
Unit: inch (mm)

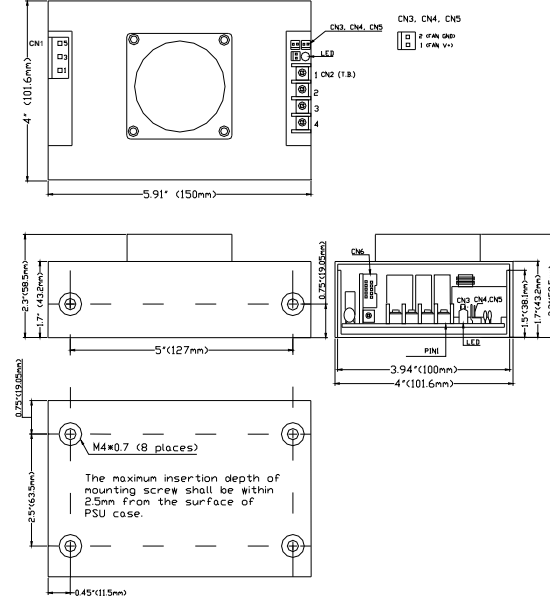


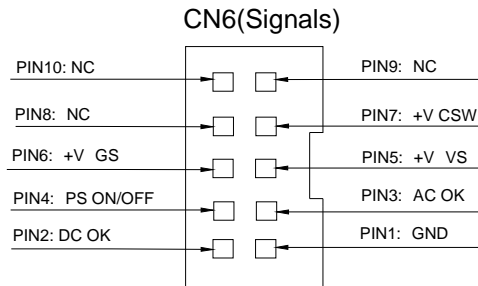
Fig. 2. Mechanical Outline of AC200-F (With Optional Fan)
Unit: inch (mm)

PIN CONNECTION:

| CN1 (AC Input) | |
|----------------|--------------|
| PIN NO. | ASSIGNMENT |
| 1 | Earth Ground |
| 2 | NC |
| 3 | Neutral |
| 4 | NC |
| 5 | Line |

| CN2 (DC Output, T.B.) | |
|-----------------------|------------|
| PIN NO. | ASSIGNMENT |
| 1 | +V |
| 2 | +V |
| 3 | PWR GND |
| 4 | PWR GND |

| CN3,CN4,CN5 (FAN Output) | |
|--------------------------|------------|
| PIN NO. | ASSIGNMENT |
| 1 | +12V(FAN) |
| 2 | GND(FAN) |



Note: VS means Remote Sense "+"

GS means Remote Sense "Return"

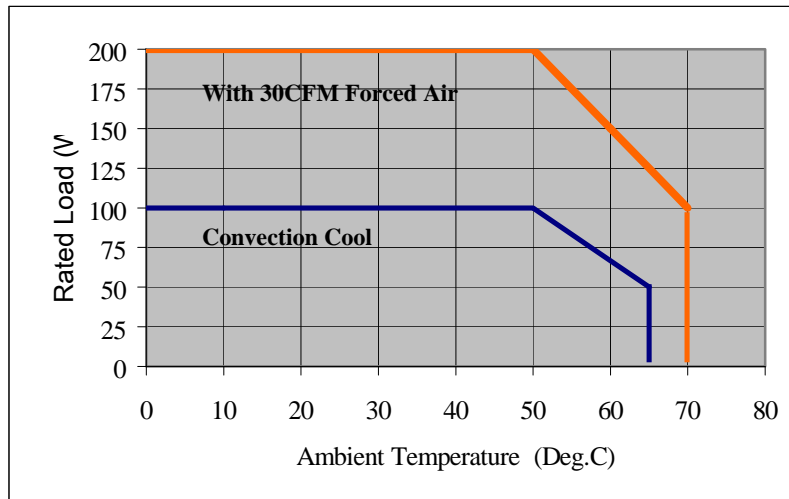


Fig. 3. Output Derating Curve