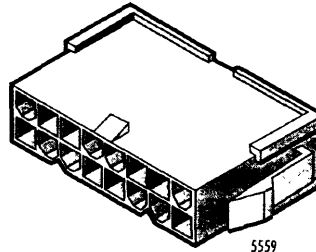
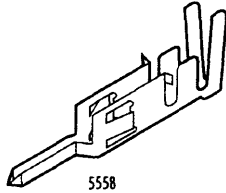
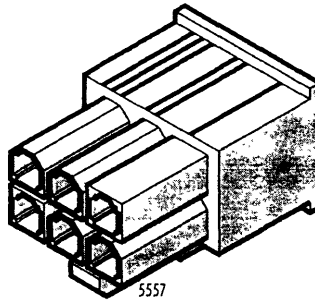
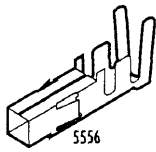


FEATURES AND TECHNICAL DATA

The Mini-Fit, Jr. series is designed for high current/high density applications which require the design flexibility of wire to wire and wire to board configurations in the interconnection system. The Mini-Fit, Jr. is appropriate for both power and signal applications as it can carry currents of up to 9 A/circuit and has a 10 mΩ contact resistance.

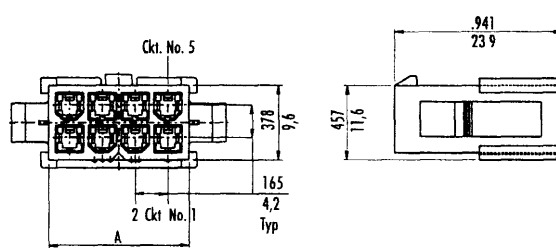
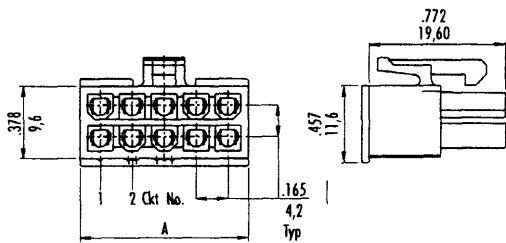
- Current rating is up to 9 A per circuit
- 600 V rating
- 10 mΩ contact resistance
- Positive housing locks
- Fully shrouded terminals
- Low engagement force terminals
- Available in 94V-2 and 94V-0 materials
- Available in 2 to 24 circuit housings
- UL File No. E29179, CSA File No. 19890, TÜV licensed
- Uses standard Mini-Fit series terminals



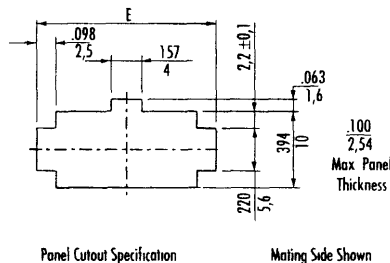
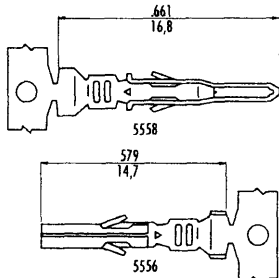
POWER CONNECTORS
MINI-FIT JR.
5556
5557
5558
5559

5557 FEMALE/5556/5558

5559 MALE



Mating Side Shown



Panel Cutout Specification

Mating Side Shown

ORDERING INFORMATION AND DIMENSIONS

Wire Size (AWG)	Insulation range	Chain		Loose		Application Tooling	
		Male (5558)	Female (5556)	Male (5558)	Female (5556)	Handtool	Mini-Mac die
Brass (tin plated)							
16	1,8 - 3,1 / .071 - .122	39-00-0081	39-00-0077	39-00-0082	39-00-0078	11-01-0145	11-18-2069
18 - 24	1,3 - 3,1 / .051 - .122	39-00-0040	39-00-0038	39-00-0041	39-00-0039	11-01-0122	11-18-2002
22 - 28	0,9 - 1,8 / .035 - .071	39-00-0048	39-00-0046	39-00-0049	39-00-0047	11-01-0125	11-18-2003

APPLICATION TOOLING

Handtool: 69008-0724

For volume tooling refer to Application Tooling section.

Please refer to page K4 for 5557 and 5559 for ordering information.

