

LM20343 Evaluation Board

[查询LM20343供应商](#)

National Semiconductor
 Application Note 1792
 Dennis Hudgins
 October 1, 2008

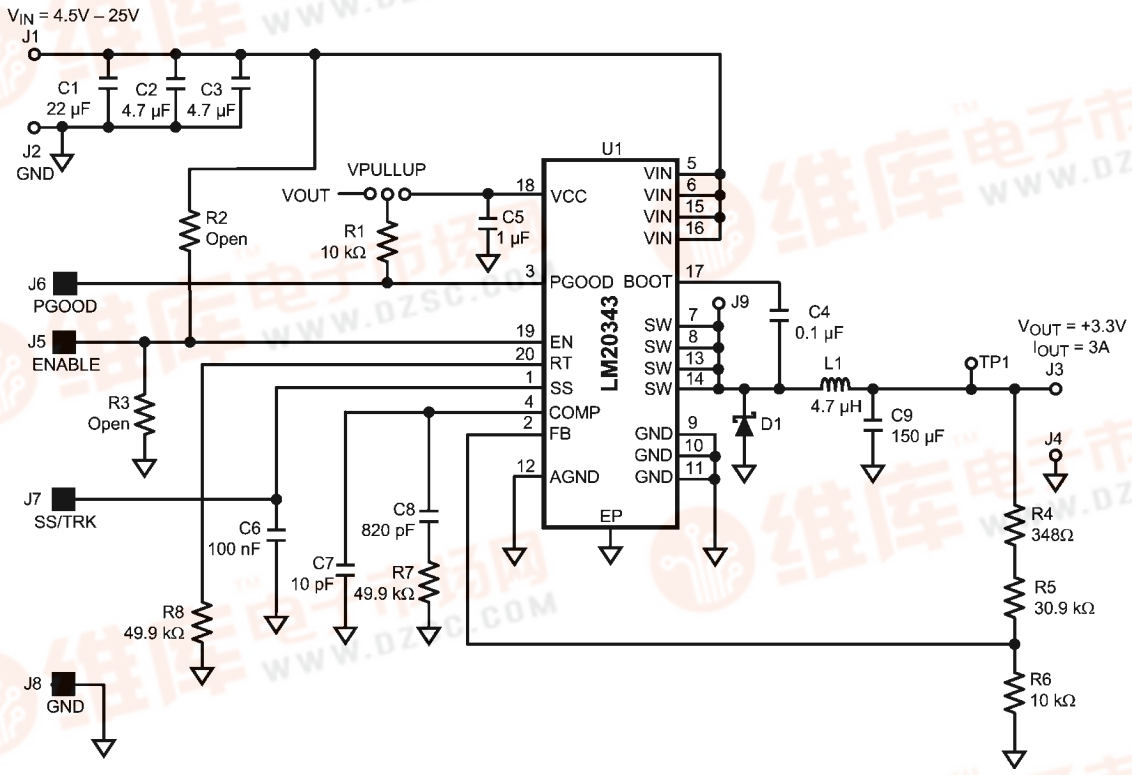


Introduction

This evaluation board provides a solution to examine the full featured LM20343 buck switching regulator that is capable of driving up to 3A of load current. This device features a frequency adjust pin that allows the switching frequency to be adjusted from 250 kHz to 1.0 MHz. The LM20343 is capable of down converting from an input voltage between 4.5V and 36V. Fault protection features include cycle-by-cycle current limit, output power good, and output over-voltage protection. The dual function soft-start/tracking pin can be used to control the startup response of the LM20343, and the precision enable pin can be used to easily sequence the LM20343 in applications with sequencing requirements.

The LM20343 evaluation board has been optimized to work from 4.5V to 25V achieving a balance between overall solution size with the efficiency of the regulator. The evaluation board measures just under 2" x 2" on a four layer PCB, and exhibits a thermal characteristic of 27 °C/W with no air flow. The power stage and compensation components of the LM20343 evaluation board have been optimized for an input voltage of 12V, but for testing purposes, the input can be varied across the entire operating range. The output voltage of the evaluation board is nominally 3.3V, but this voltage can be easily changed by replacing one of the feedback resistors (R5 or R6).

Evaluation Board Schematic



30051401



Powering and Loading

Considerations

Read this entire page prior to attempting to power the evaluation board.

QUICK SETUP PROCEDURE

Step 1: Set the input source current limit to 3A. Turn off the input source. Connect the positive output of the input source to J1 and the negative output to J2.

Step 2: Connect the load, with 3A capability, to J3 for the positive connection and J4 for the negative connection.

Step 3: The ENABLE pin, J5, should be left open for normal operation.

Step 4: Set the input source voltage to 12V and the load to 0.1A. The load voltage should be in regulation with a nominal 3.3V output.

Step 5: Slowly increase the load while monitoring the load voltage at J3 and J4. It should remain in regulation with a nominal 3.3V output as the load is increased up to 3 Amp.

Step 6: Slowly sweep the input source voltage from 4.5V to 25V. The load voltage should remain in regulation with a nominal 3.3V output. If desired the output of the device can be disabled by connecting the ENABLE pin (J5) to GND (J8)

Step 7: The pull-up voltage for PGOOD can be selected by using the JP1 shunt to connect VPULLUP to VOUT or VCC.

POWERING UP

It is suggested that the load power be kept low during the first power up. Set the current limit of the input source to provide about 1.5 times the anticipated wattage of the load. Once the device is powered up, immediately check for 3.3 volts at the output.

A quick efficiency check is the best way to confirm that everything is operating properly. If something is amiss you can be reasonably sure that it will affect the efficiency adversely. Few parameters can be incorrect in a switching power supply without creating losses and potentially damaging heat.

OVER CURRENT PROTECTION

The evaluation board is configured with cycle-by-cycle over-current protection. This function is completely contained in the LM20343. The peak current is limited to approximately 5.2A.

Connection Descriptions

Terminal Silkscreen	Description
VIN	This terminal is the input voltage to the device. The evaluation board will operation over the input voltage range of 4.5V to 25V. This voltage is limited due to the voltage rating of the input capacitors.
GND	These terminals are the ground connections to the device. There are three different GND connections on the PCB. J2 should be used for the input supply, J4 should be used for the load, and J8 should be used for low power signal connections such as ENABLE.
VOUT	This terminal connects to the output voltage of the power supply and should be connected to the load.
ENABLE	This terminal connects to the enable pin of the device. This terminal can be left floating or driven externally. If driven externally, a voltage typically less than 1.2V will disable the device. The operating voltage for this pin should not exceed 5.5V. The absolute maximum voltage rating on this pin is 6V.
SS/TRK	This terminal provides access to the SS/TRK pin of the device. Connections to this terminal are not needed for most applications. The feedback pin of the device will track the voltage on the SS/TRK pin if it is driven with an external voltage source that is below the 0.8V reference. The voltage on this pin should not exceed 5.5V during normal operation. The absolute maximum voltage rating on this pin is 6V.
PGOOD	This terminal connects to the power good output of the device. There is an option to connect this pin to VOUT or VCC through a 10 kΩ pull-up resistor. The voltage on this pin should not exceed 5.5V during normal operation and has an absolute maximum voltage rating of 6V.
JP1	This terminal block selects the pull-up voltage for the PGOOD pin to be either VCC or VOUT. An external voltage source for PGOOD may be supplied by connecting to the center terminal. The voltage applied to PGOOD should not exceed 5.5V during normal operation and has an absolute maximum voltage rating of 6V.
SW	This terminal allows easy probing of the switch node. Do not apply any external voltage source to this pin.
TP1 (VOUT)	This is a oscilloscope probe connector point used to measure the output ripple and transient response. It is design to work with most Tektronix oscilloscope probes and is the recommended measurement point for evaluating AC performance.



Performance Characteristics

EFFICIENCY PLOTS

Figure 1 shows the conversion efficiency versus output current for a 5V and 12V input voltage.

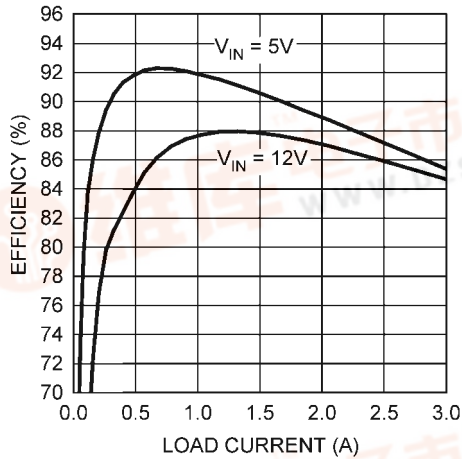


FIGURE 1.

TURN-ON WAVEFORM

When applying power to the LM20323 evaluation board a soft-start sequence occurs. Figure 2 shows the output voltage during a typical start-up sequence.

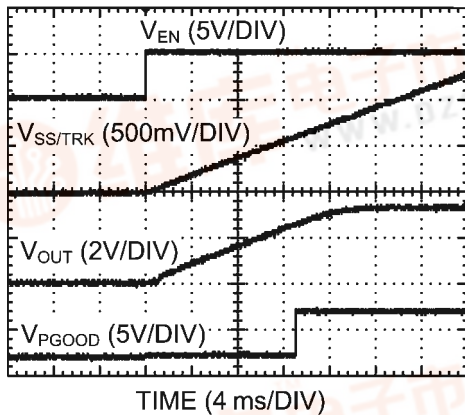
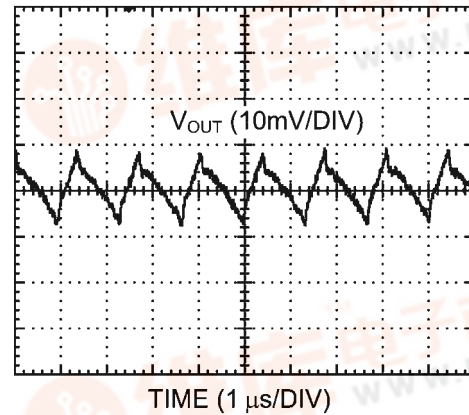


FIGURE 2.

OUTPUT RIPPLE WAVEFORM

Figure 3 shows the output voltage ripple. This measurement was taken with the scope probe tip placed on the J3 load terminal and the scope probe ground "barrel" pushed against the J4 load terminal. The scope bandwidth is set to 20 MHz.



Bandwidth Limit = 20 MHz

FIGURE 3.

OUTPUT TRANSIENT RESPONSE

FIGURE 4 shows the output transient response during a 300mA to 3A transient.

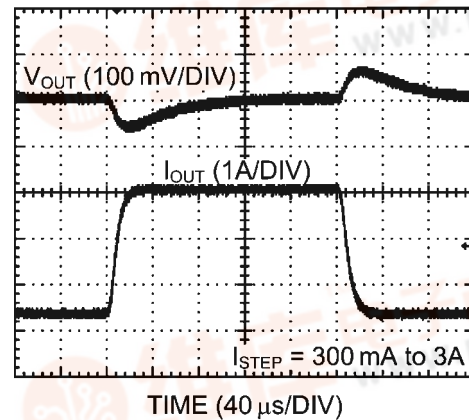


FIGURE 4.

Bill of Materials

查询LM20343供应商

The Bill of Materials is shown below, including the manufacturer and part number.

TABLE 1.

DESIGNATOR	QTY	PART NUMBER	DESCRIPTION	VALUE
C1	1	GRM32ER61E226KE15	CAPACITOR, 1210 X5R CER, MURATA	22 μ F, 25V
C2, C3	2	GRM21BR61E475KA12L	CAPACITOR, 0805 X5R CER, MURATA	4.7 μ F, 25V
C5	1	GRM188R71A105KA61D	CAPACITOR, 0603 X7R CER, MURATA	1 μ F, 10V
C4, C6	2	C1608X7R1H104K	CAPACITOR, 0603 X7R CER, TDK	0.1 μ F, 50V
C7	1	C1608C0G1H100J	CAPACITOR, 0603 COG CER, TDK	10 pF, 50V
C8	1	C1608C0G1H821J	CAPACITOR, 0603 COG CER, TDK	820 pF, 50V
C9	1	6TPB150MAZB	CAPACITOR, POSCAP B, SANYO	150 μ F, 6.3V
D1	1	CMMSH1-40-NST	DIODE, SCHOTTKY, CENTRAL SEMI	1A, 40V
L1	1	IHLP4040DZER4R7M11	INDUCTOR, VISHAY	4.7 μ H, 7.6A
R1, R6	2	CRCW06031002F	RESISTOR, 0603, VISHAY	10 k Ω
R7, R8	2	CRCW06034992F	RESISTOR, 0603, VISHAY	49.9 k Ω
R2, R3	0	OPEN	-	-
R4	1	CRCW0603348RF	RESISTOR, 0603, VISHAY	348 Ω
R5	1	CRCW06033092F	RESISTOR, 0603, VISHAY	30.9 k Ω
U1	1	LM20343MH	SWITCHING REGULATOR, NATIONAL SEMI	
J1 - J4	4	160-1026-02-01-00	TURRET TERMINAL, CAMBION	TERMINAL, TURRET
J6, J7, J9	3	5002	TERMINAL, SINGLE PIN, KEYSTONE	TESTPOINT, LOOP
J5	1	5000	TERMINAL, SINGLE PIN, KEYSTONE	TESTPOINT, LOOP
J8	1	5001	TERMINAL, SINGLE PIN, KEYSTONE	TESTPOINT, LOOP
TP1	1	131503100	TEKTRONIX SCOPE PROBE TESTPOINT	PROBE TESTPOINT



Component Selection

This section provides a walk-through of the design process of the LM20343 evaluation board. Unless otherwise indicated all equations assume units of amps (A) for current, farads (F) for capacitance, henries (H) for inductance, and volts (V) for voltages.

INPUT CAPACITORS: C1, C2, C3

The required RMS current rating of the input capacitor for a buck regulator can be estimated by the following equation:

$$I_{CIN(RMS)} = I_{OUT} \sqrt{D(1-D)}$$

The variable D refers to the duty cycle, and can be approximated by:

$$D = \frac{V_{OUT}}{V_{IN}}$$

From this equation, it follows that the maximum $I_{CIN(RMS)}$ requirement will occur at a full 3A load current with the system operating at 50% duty cycle. Under this condition, the maximum $I_{CIN(RMS)}$ is given by:

$$I_{CIN(RMS)} = 3A \sqrt{0.5 \times 0.5} = 1.5A$$

Ceramic capacitors feature a very large I_{RMS} rating in a small footprint, making a ceramic capacitor ideal for this application. A two 4.7 μ F, X5R, 25V ceramic capacitor (C2, C3) from Murata are used to provide the necessary input capacitance for the evaluation board. An additional 22 μ F, X5R, 25V capacitor is used to provide additional input capacitance to counter cabling inductance to the input.

INDUCTOR: L1

The value of the inductor was selected to allow the device to achieve a 12V to 3.3V conversion at 750kHz to provide a peak to peak ripple current 679mA, which is about 23% of the maximum output current. To have an optimized design, generally the peak to peak inductor ripple current should be kept to within 20% to 40% of the rated output current for a given input voltage, output voltage and operating frequency. The peak to peak inductor ripple current can be calculated by the equation:

$$\Delta I_{P-P} = \frac{(V_{IN} - V_{OUT}) \times D}{L \times f_{SW}}$$

Once an inductance value is calculated, an actual inductor needs to be selected based on a trade-off between physical size, efficiency, and current carrying capability. For the LM20343 evaluation board, a Vishay IHLP4040DZ-ER4R7M11 inductor offers a good balance between efficiency (13 m Ω DCR), size, and saturation current rating (7.6A I_{SAT} rating).

OUTPUT CAPACITOR: C9

The value of the output capacitor in a buck regulator influences the voltage ripple that will be present on the output voltage, as well as the large signal output voltage response to a load transient. Given the peak-to-peak inductor current

ripple (ΔI_{P-P}) the output voltage ripple can be approximated by the equation:

$$\Delta V_{OUT} = \Delta I_{P-P} \times \left[R_{ESR} + \frac{1}{8 \times f_{SW} \times C_{OUT}} \right]$$

The variable R_{ESR} above refers to the ESR of the output capacitor. As can be seen in the above equation, the ripple voltage on the output can be divided into two parts, one of which is attributed to the AC ripple current flowing through the ESR of the output capacitor and another due to the AC ripple current actually charging and discharging the output capacitor. The output capacitor also has an effect on the amount of droop that is seen on the output voltage in response to a load transient event.

For the evaluation board, a Sanyo 150 μ F POSCAP output capacitor was selected to provide good transient and DC performance in a relatively small package. From the technical specifications of this capacitor, the ESR is roughly 35 m Ω , and RMS ripple current rating is 1.4A. With these values, the worst case peak to peak voltage ripple on the output when operating from a 12V input can be calculated to be 25 mV.

SOFT-START CAPACITOR: C6

A soft-start capacitor can be used to control the startup time of the LM20343 voltage regulator. The startup time of the regulator when using a soft-start capacitor can be estimated by the following equation:

$$t_{SS} = \frac{0.8V \times C6}{I_{SS}}$$

For the LM20343, I_{SS} is nominally 5 μ A. For the evaluation board, the soft-start time has been designed to be roughly 15 ms, resulting in a C_{SS} capacitor value of 100 nF.

VCC BYPASS: C5

The capacitor C5 is used to bypass the internal 4.5V sub-regulator. A value of 1 μ F is sufficient for most applications.

BOOT CAPACITOR: C4

C4 is the boot capacitor which is used to provide the charge needed to drive the high-side FET. An optimal value for this capacitor is 0.1 μ F.

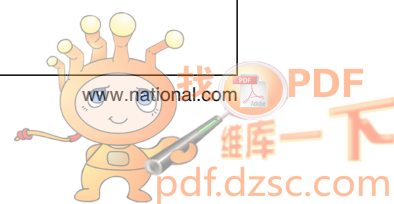
COMPENSATION CAPACITOR: C8

The capacitor C8 is used to set the crossover frequency of the LM20343 control loop. Since this board was optimized to be stable over the full input and output voltage range, the value of C8 was selected to be 820 pF. Once the operating conditions for the device are known, the transient response can be optimized by reducing the value of C8 and calculating the value for R7 as outlined in the next section.

COMPENSATION RESISTOR: R7

Once the value of C8 is known, resistor R7 is used to place a zero in the control loop to cancel the output filter pole. This resistor can be sized according to the equation:

$$R7 = \left[\frac{C8}{C9} \times \left[\frac{I_{OUT}}{V_{OUT}} + \frac{2 \times D}{f_{SW} \times L1} \right] \right]^{-1}$$



For stability purposes the device should be compensated for the maximum output current expected in the application.

OPTIONAL COMPENSATION CAPACITOR: C7

A second compensation capacitor C7 can be used in some designs to improve noise immunity for low duty cycle conversions, as well as, provide a high frequency pole, useful for cancelling a possible zero introduced by the ESR of the output capacitor. For the LM20343 evaluation board, a 10pF capacitor is populated for C7. Higher value capacitors can be used to improve low duty cycle performance at the expense of phase margin.

FREQUENCY ADJUST RESISTOR: R8

The value for R8 will set the operating frequency of the device. For this evaluation board a value of 49.9 k Ω was chosen which sets oscillator frequency to 750 kHz. The value of R8 can be adjusted to support operating frequencies from 250 kHz to 1 MHz by using the equation:

$$R8 = \left(\frac{78000}{f_{sw}} \right) - 55$$

Where, f_{sw} is the switching frequency in kHz, and R8 is the frequency adjust resistor in k Ω .

FEEDBACK RESISTORS: R4, R5, and R6

The resistors labeled R5 and R6 create a voltage divider from V_{OUT} to the feedback pin that is used to set the output of the

voltage regulator. Nominally, the output of the LM20343 evaluation board is set to 3.3V, giving resistor values of R5 = 30.9 k Ω and R6 = 10 k Ω . If a different output voltage is required, the value of R5 can be adjusted according to the equation:

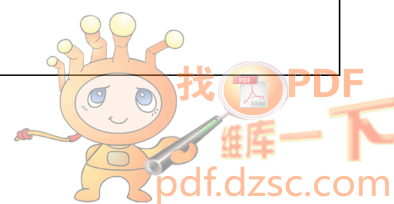
$$R5 = \left(\frac{V_{OUT}}{0.8} - 1 \right) \times R6$$

R6 does not need to be changed from its value of 10 k Ω . Resistor R4 has a value of 348 Ω and is provided as an injection point for loop stability measurements, as well as, a way to further tweak the output voltage accuracy to account for resistor tolerance values differing from ideal calculated values.

PROGRAMMABLE UVLO: R2 and R3

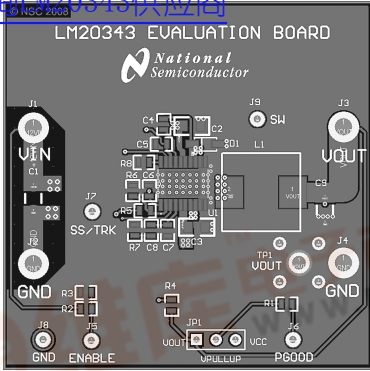
The resistors labeled R2 and R3 create a voltage divider from V_{IN} to the enable pin that can be used to set the turn-on threshold or UVLO of the voltage regulator. To allow evaluation of the device down to 4.5V these components are not installed. To change the turn-on threshold of the device a 10 k Ω resistor is recommended for R3 and the value of R2 can be calculated using the equation:

$$R2 = \left(\frac{V_{TO}}{1.25} - 1 \right) \times R3$$



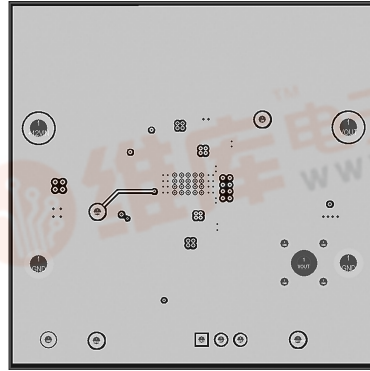
PCB Layout

查询LM20343供应商



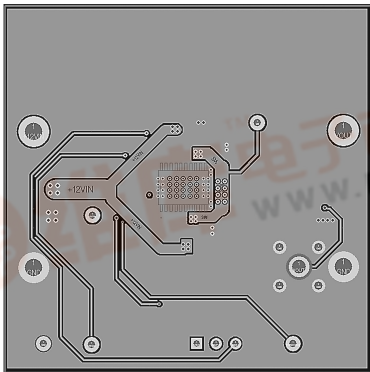
Top Layer

30051430



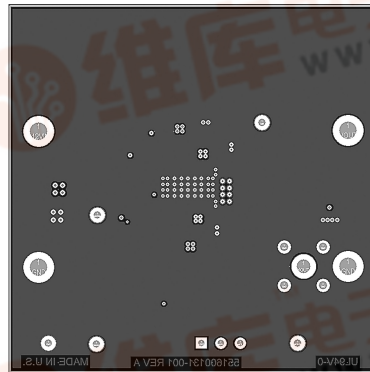
Mid Layer2

30051432



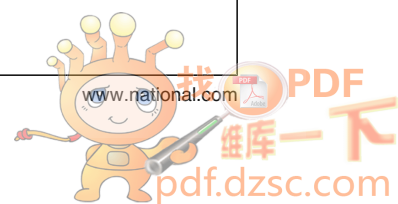
Mid Layer1

30051431



Bottom Layer

30051433



[查询LM20343供应商](#)

For more National Semiconductor product information and proven design tools, visit the following Web sites at:

Products		Design Support	
Amplifiers	www.national.com/amplifiers	WEBENCH	www.national.com/webench
Audio	www.national.com/audio	Analog University	www.national.com/AU
Clock Conditioners	www.national.com/timing	App Notes	www.national.com/appnotes
Data Converters	www.national.com/adc	Distributors	www.national.com/contacts
Displays	www.national.com/displays	Green Compliance	www.national.com/quality/green
Ethernet	www.national.com/ethernet	Packaging	www.national.com/packaging
Interface	www.national.com/interface	Quality and Reliability	www.national.com/quality
LVDS	www.national.com/lvds	Reference Designs	www.national.com/refdesigns
Power Management	www.national.com/power	Feedback	www.national.com/feedback
Switching Regulators	www.national.com/switchers		
LDOs	www.national.com/lido		
LED Lighting	www.national.com/led		
PowerWise	www.national.com/powerwise		
Serial Digital Interface (SDI)	www.national.com/sdi		
Temperature Sensors	www.national.com/tempsensors		
Wireless (PLL/VCO)	www.national.com/wireless		

THE CONTENTS OF THIS DOCUMENT ARE PROVIDED IN CONNECTION WITH NATIONAL SEMICONDUCTOR CORPORATION ("NATIONAL") PRODUCTS. NATIONAL MAKES NO REPRESENTATIONS OR WARRANTIES WITH RESPECT TO THE ACCURACY OR COMPLETENESS OF THE CONTENTS OF THIS PUBLICATION AND RESERVES THE RIGHT TO MAKE CHANGES TO SPECIFICATIONS AND PRODUCT DESCRIPTIONS AT ANY TIME WITHOUT NOTICE. NO LICENSE, WHETHER EXPRESS, IMPLIED, ARISING BY ESTOPPEL OR OTHERWISE, TO ANY INTELLECTUAL PROPERTY RIGHTS IS GRANTED BY THIS DOCUMENT.

TESTING AND OTHER QUALITY CONTROLS ARE USED TO THE EXTENT NATIONAL DEEMS NECESSARY TO SUPPORT NATIONAL'S PRODUCT WARRANTY. EXCEPT WHERE MANDATED BY GOVERNMENT REQUIREMENTS, TESTING OF ALL PARAMETERS OF EACH PRODUCT IS NOT NECESSARILY PERFORMED. NATIONAL ASSUMES NO LIABILITY FOR APPLICATIONS ASSISTANCE OR BUYER PRODUCT DESIGN. BUYERS ARE RESPONSIBLE FOR THEIR PRODUCTS AND APPLICATIONS USING NATIONAL COMPONENTS. PRIOR TO USING OR DISTRIBUTING ANY PRODUCTS THAT INCLUDE NATIONAL COMPONENTS, BUYERS SHOULD PROVIDE ADEQUATE DESIGN, TESTING AND OPERATING SAFEGUARDS.

EXCEPT AS PROVIDED IN NATIONAL'S TERMS AND CONDITIONS OF SALE FOR SUCH PRODUCTS, NATIONAL ASSUMES NO LIABILITY WHATSOEVER, AND NATIONAL DISCLAIMS ANY EXPRESS OR IMPLIED WARRANTY RELATING TO THE SALE AND/OR USE OF NATIONAL PRODUCTS INCLUDING LIABILITY OR WARRANTIES RELATING TO FITNESS FOR A PARTICULAR PURPOSE, MERCHANTABILITY, OR INFRINGEMENT OF ANY PATENT, COPYRIGHT OR OTHER INTELLECTUAL PROPERTY RIGHT.

LIFE SUPPORT POLICY

NATIONAL'S PRODUCTS ARE NOT AUTHORIZED FOR USE AS CRITICAL COMPONENTS IN LIFE SUPPORT DEVICES OR SYSTEMS WITHOUT THE EXPRESS PRIOR WRITTEN APPROVAL OF THE CHIEF EXECUTIVE OFFICER AND GENERAL COUNSEL OF NATIONAL SEMICONDUCTOR CORPORATION. As used herein:

Life support devices or systems are devices which (a) are intended for surgical implant into the body, or (b) support or sustain life and whose failure to perform when properly used in accordance with instructions for use provided in the labeling can be reasonably expected to result in a significant injury to the user. A critical component is any component in a life support device or system whose failure to perform can be reasonably expected to cause the failure of the life support device or system or to affect its safety or effectiveness.

National Semiconductor and the National Semiconductor logo are registered trademarks of National Semiconductor Corporation. All other brand or product names may be trademarks or registered trademarks of their respective holders.

Copyright© 2008 National Semiconductor Corporation

For the most current product information visit us at www.national.com



**National Semiconductor
Americas Technical
Support Center**
Email: support@nsc.com
Tel: 1-800-272-9959

**National Semiconductor Europe
Technical Support Center**
Email: europe.support@nsc.com
German Tel: +49 (0) 180 5010 771
English Tel: +44 (0) 870 850 4288

**National Semiconductor Asia
Pacific Technical Support Center**
Email: ap.support@nsc.com

**National Semiconductor Japan
Technical Support Center**
Email: jpn.feedback@nsc.com