

LM5037 Evaluation Board

[查询LM5037供应商](#)

National Semiconductor
Application Note 1904
Ajay Hari
January 5, 2009



LM5037 Evaluation Board

Introduction

The LM5037 evaluation board is designed to provide the design engineer with a fully functional power converter based on the half-bridge topology to evaluate the LM5037 controller. The performance of the evaluation board is as follows:

Input Operating Range: 36V to 72V

Output Voltage: 5.0V

Output Current: 0 to 10A

Measured Efficiency: 88% @ 10A and 48V

Input Frequency of Operation: 300 kHz

Board Size: 3.5x2.25x0.05 inches

Load Regulation: 2% Line UVLO (34V rising / 31V falling)

The printed circuit board consists of 4 layers of 2 oz copper on FR4 material, with a thickness of 0.050 in. The unit is designed for continuous operation at rated load at <40°C and a minimum airflow of 200 CFM.

Theory of Operation

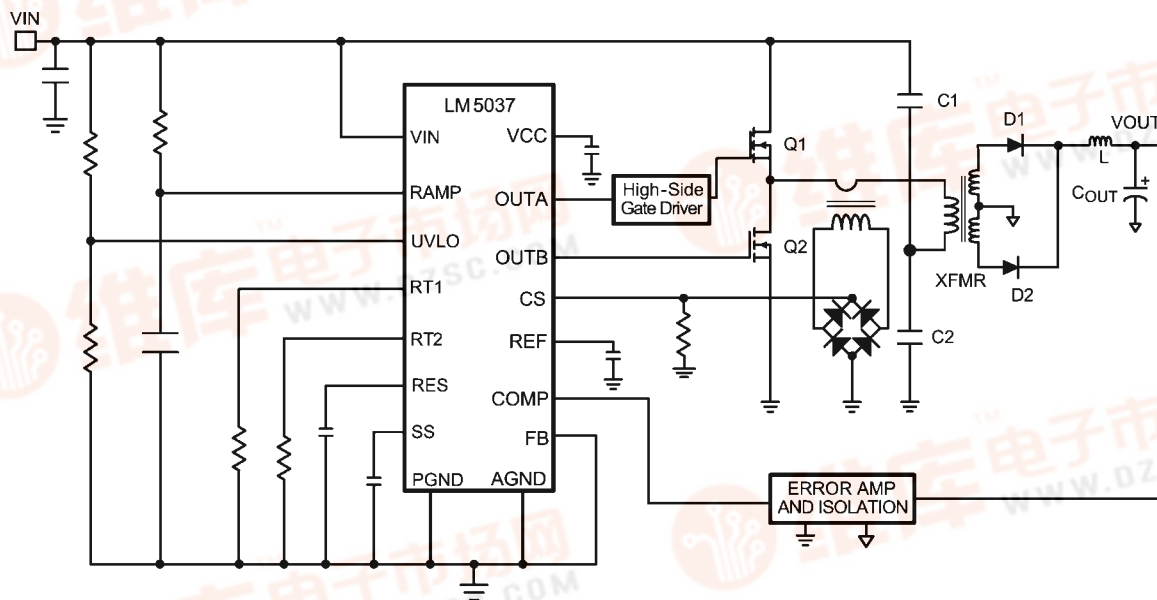
The half-bridge topology belongs to the family of buck converter topologies. The main difference between a buck topology and half-bridge topology is the use of a transformer to isolate the primary and secondary. However, in a half-bridge topology both step-up and step-down of input voltage can be achieved by adjusting the turns ratio of the transformer. Figure 1 illustrates the circuit arrangement for half-bridge topology. The capacitors C1 and C2, which form one-half of the bridge, are arranged in series such that the mid-point is at half

the input voltage. The other half of the bridge is formed by switches Q1 and Q2. Switches Q1 and Q2 are turned on alternatively usually with a fixed dead-time. Each cycle, when a switch is turned ON, the primary of the transformer sees one-half the input voltage across it. The LM5037 evaluation board's transformer primary has 4 turns and the secondary has 2 turns resulting in a 2:1 step down of the voltage applied across the primary. The transformer secondary voltage is then rectified and filtered with an LC filter to provide a smoothed output voltage. For an output voltage of 5.0V the composite duty cycle (D) of the primary switches varies from approximately 66% (low line) to 31% (high line).

In the half-bridge topology, the primary switches are turned on alternatively energizing the windings in such a way that the flux swings back and forth in the first and third quadrants of B-H curve. The use of two quadrants allows better utilization of the core resulting in a smaller core volume compared to single-ended topologies such as a forward converter.

The feedback resistors are set such that at the desired output voltage of 5.0V, the voltage at the feedback pin is equal to the internal reference voltage (1.25V). The LM5037 has been configured for voltage mode control. Hence, a standard "type III" network is used for the compensation.

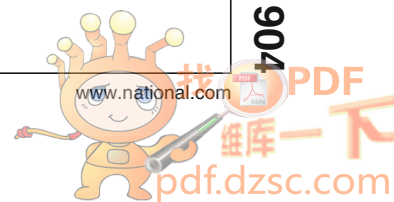
Power dissipation is reduced by raising the VCC voltage using an auxiliary winding of power transformer. The evaluation board can be synchronized to an external clock with a recommended frequency range of 275 kHz to 500 kHz. Please refer to the LM5037 datasheet for more details on synchronization.



Typical Half-Bridge Circuit

30080101

AN-1904



Powering and Loading Considerations

When applying power to the LM5037 evaluation board certain precautions need to be followed. A misconnection can damage the assembly.

PROPER CONNECTIONS

When operated at low input voltages the evaluation board can draw up to 1.5A of current at full load. The maximum rated output current is 10A. Be sure to choose the correct connector and wire size when attaching the source supply and the load. Monitor the current into and out of the evaluation board. Monitor the voltage directly at the output terminals of the evaluation board. The voltage drop across the load connecting wires will give inaccurate measurements. This is especially true for accurate efficiency measurements.

SOURCE POWER

The evaluation board can be viewed as a constant power load. At low input line voltage (36V) the input current can reach 1.5A in steady state, while at high input line voltage (72V) the input current will be approximately 0.75A. Therefore, to fully test the LM5037 evaluation board a DC power supply capable of at least 80V and 2A is required. The power supply must have adjustments for both voltage and current. The power supply and cabling must present low impedance to the evaluation board. Insufficient cabling or a high impedance power supply will droop during power supply application with the evaluation board inrush current. If large enough, this droop will cause a chattering condition upon power up. This chattering condition is an interaction with the evaluation board under-voltage lockout, the cabling impedance and the inrush current.

LOADING

When using electronic load, it is strongly recommended to power up the evaluation board at light load and then slowly increase the load. This is necessary as most of the electronic loads do not draw any current till the output voltage reaches an internally set point; this can result in soft-start function to

not work as desired and can trip the current sense comparator. Electronic loads, in general, are best suited for monitoring steady state waveforms. If it is desired to power up the evaluation board at maximum load, resistor banks must be used. This will ensure a soft-start and evaluation board will perform as desired. The high output current requires thick cables! If resistor banks are used there are certain precautions to be taken. The resistance for maximum load is 0.5Ω . The wattage and current ratings must be adequate for a 10A, 50W supply. Monitor both current and voltage at all times. Ensure there is sufficient cooling provided for the load.

AIR FLOW

Full power loading should never be attempted without providing the specified 200 CFM of air flow over the evaluation board. A stand-alone fan should be provided.

POWERING UP

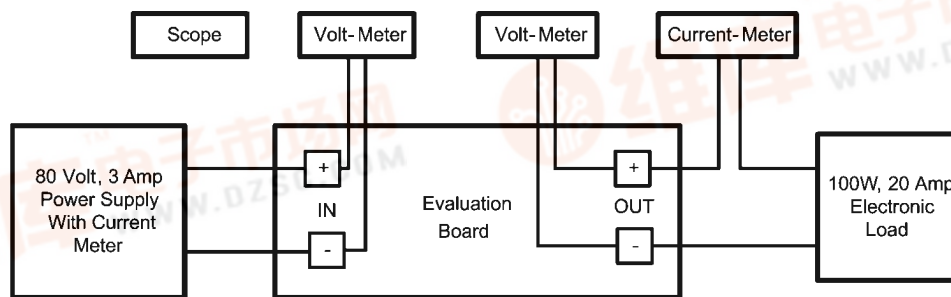
It is suggested to set the current limit of the source supply to provide about 1.5 times the wattage of the load.

A most common occurrence, that will prove unnerving, is when the current limit set on the source supply is insufficient for the load. The result is similar to having the high source impedance referred to earlier. The interaction of the source supply folding back and the evaluation board going into under-voltage shutdown will start an oscillation, or chatter, that may have undesirable consequences.

A quick efficiency check is the best way to confirm that everything is operating properly. If something is amiss you can be reasonably sure that it will affect the efficiency adversely. Few parameters can be incorrect in a switching power supply without creating losses and potentially damaging heat.

OVER CURRENT PROTECTION

The evaluation board is configured with hiccup over-current protection. In the event of an output overload (approximately 14A@36V Input) the unit will discharge the soft-start capacitor, which disables the power stage. After a delay the soft-start is released. The shutdown, delay and slow recharge time of the soft-start capacitor protects the unit, especially during a short circuit event where the stress is highest.



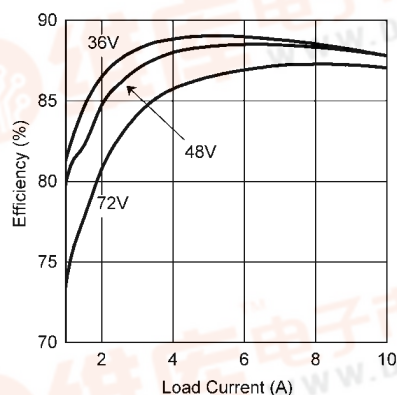
Typical Application Set-up

30080102



Performance Characteristics

Once the circuit is powered up and running normally, the output voltage is regulated to 5.0V with the accuracy determined by feedback resistors and bandgap reference voltage of the IC. When load current is varied from 5A to 10A, the regulator output is within 100 mV. The frequency of operation is selected to be 250 kHz, which is a good compromise between board size and efficiency. The efficiency of the power converter is measured to be 88% at 48V and 10A. Please refer to figure 1 below for efficiency curves:

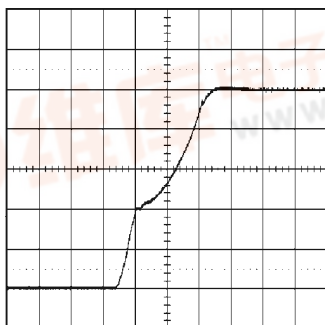


30080103

FIGURE 1. Efficiency vs. Load Current and VIN

Waveforms

When applying power to the LM5037 evaluation board a certain sequence of events occurs. Soft-start capacitor values and other components allow for a linear increase in output voltage for a short time until the feedback loop can stabilize without an overshoot. Figure 2 shows the output voltage during a typical start-up with a 48V input and a load of 10A. There is no overshoot during startup. It is suggested to use a resistor load instead of an electronic load, while capturing soft-start data as electronic loads tend to (have certain idiosyncrasies of not providing load resistance till the output reaches a preset minimum voltage and thereby occasionally) causing a transient during start-up.



30080104

Conditions:

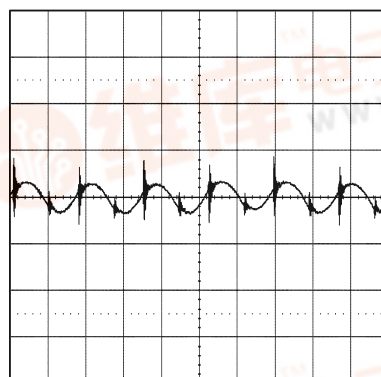
Input Voltage = 48VDC
Output Current = 10A

Trace:

Output Voltage Volts/div = 1V
Horizontal Resolution = 1 msec/div

FIGURE 2. Soft-Start

Figure 3 shows typical output ripple seen directly across the output capacitor, for an input voltage of 48V and a load of 10A. This waveform is typical of most loads and input voltages.



30080105

Conditions:

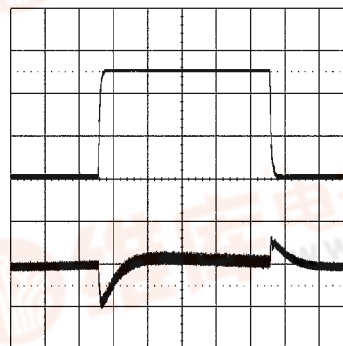
Input Voltage = 48VDC
Output Current = 10A
Bandwidth Limit = 20 MHz

Trace:

Output Ripple
Volts/div = 50 mV
Horizontal Resolution = 5.0 μ sec/div

FIGURE 3. Output Ripple

Figure 4 shows the transient response for a load of change from 5A to 10A. The upper trace shows minimal output voltage droop and overshoot during the sudden change in output current shown by the lower trace.



30080106

Conditions:

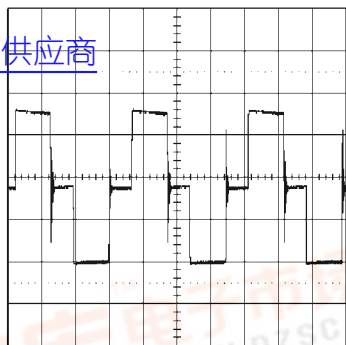
Input Voltage = 48VDC
Output Current = 5A to 10A
Bandwidth Limit = 20 MHz

Traces:

Top Trace: Output Current
Amps/div = 5A
Bottom Trace: Output Voltage response
Volts/div = 100 mV
Horizontal Resolution = 200 μ sec/div

FIGURE 4. Transient Response

Figures 5 and Figure 6 show the drain voltage waveforms of Q2 with a 10A load and at an input voltage of 36V & 72V respectively. Drain of Q2 sees the input voltage when it is off and during dead-time it exactly sees input voltage.

[查询LM5037供应商](#)


30080107

Conditions:

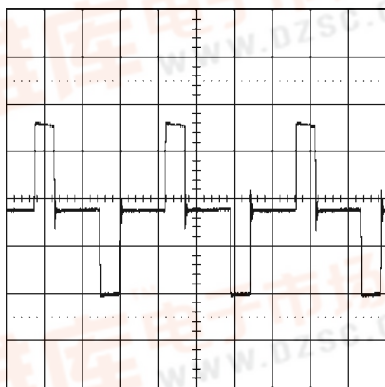
Input Voltage = 36VDC

Output Current = 10A

Trace:

Q2 drain to source voltage

Volts/div = 10V

Horizontal Resolution = 2 μ sec/div**FIGURE 5. Drain Waveform of Q2 at 36V**

30080108

Conditions:

Input Voltage = 72VDC

Output Current = 10A

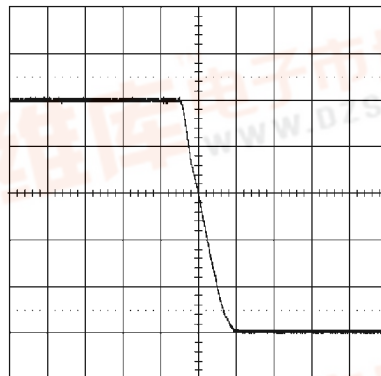
Trace:

Q2 drain voltage

Volts/div = 20V

Horizontal Resolution = 2 μ sec/div**FIGURE 6. Drain Waveform of Q2 at 72V**

Figure 7 shows the soft-stop. This can be achieved by setting the UVLO voltage between 0.4V and 1.25V.



30080109

Conditions:

Input Voltage = 48VDC

Trace:

Output Voltage Volts/div = 1V

Horizontal Resolution = 1 msec/div

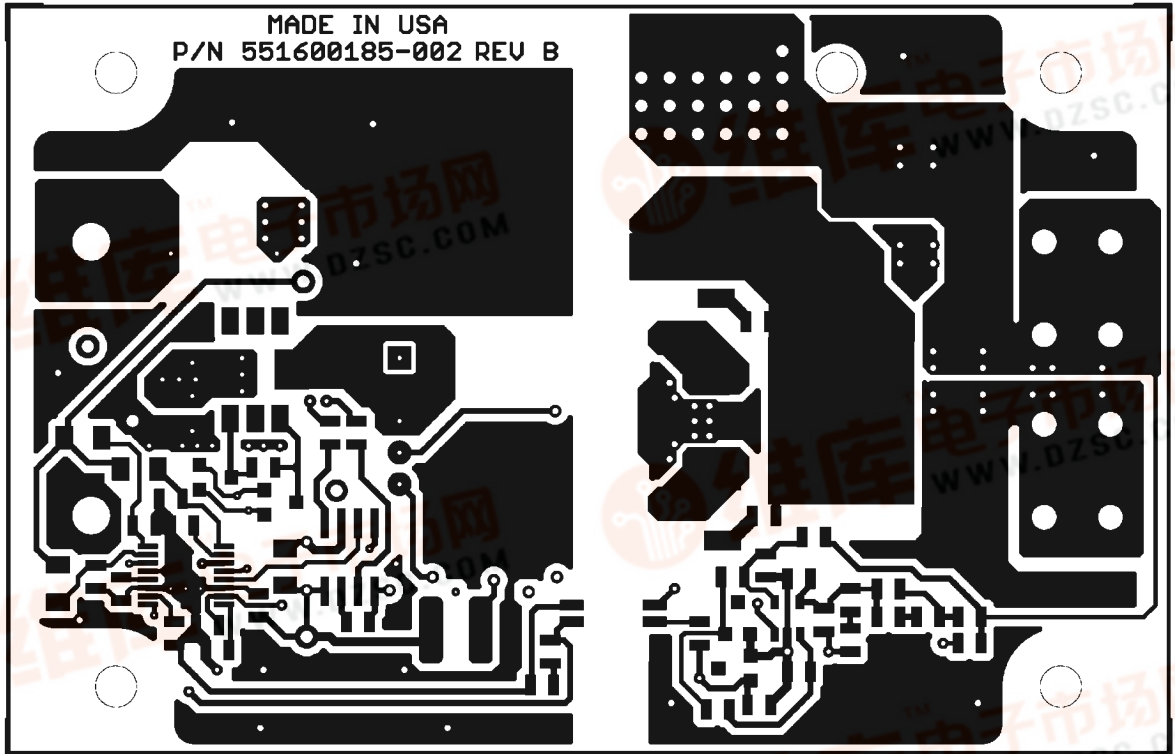
FIGURE 7. Soft Stop

[查询LM5037供应商](#)

Application Schematic

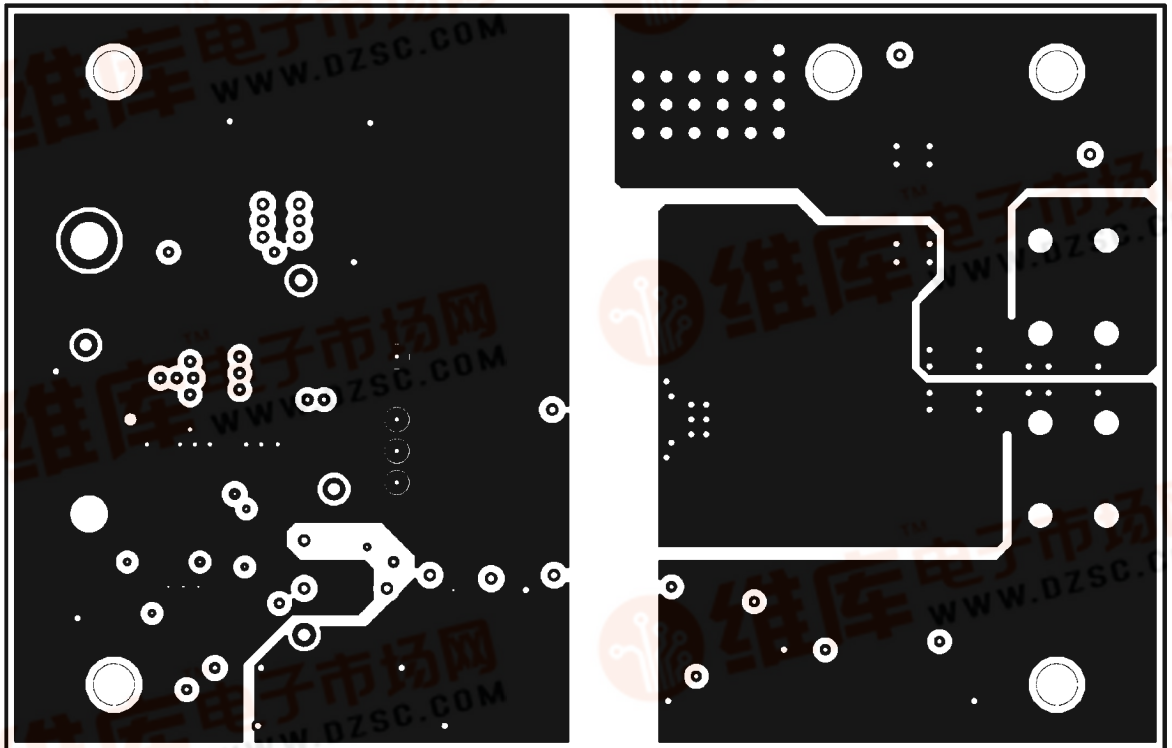
PCB Layout

[查询LM5037供应商](#)

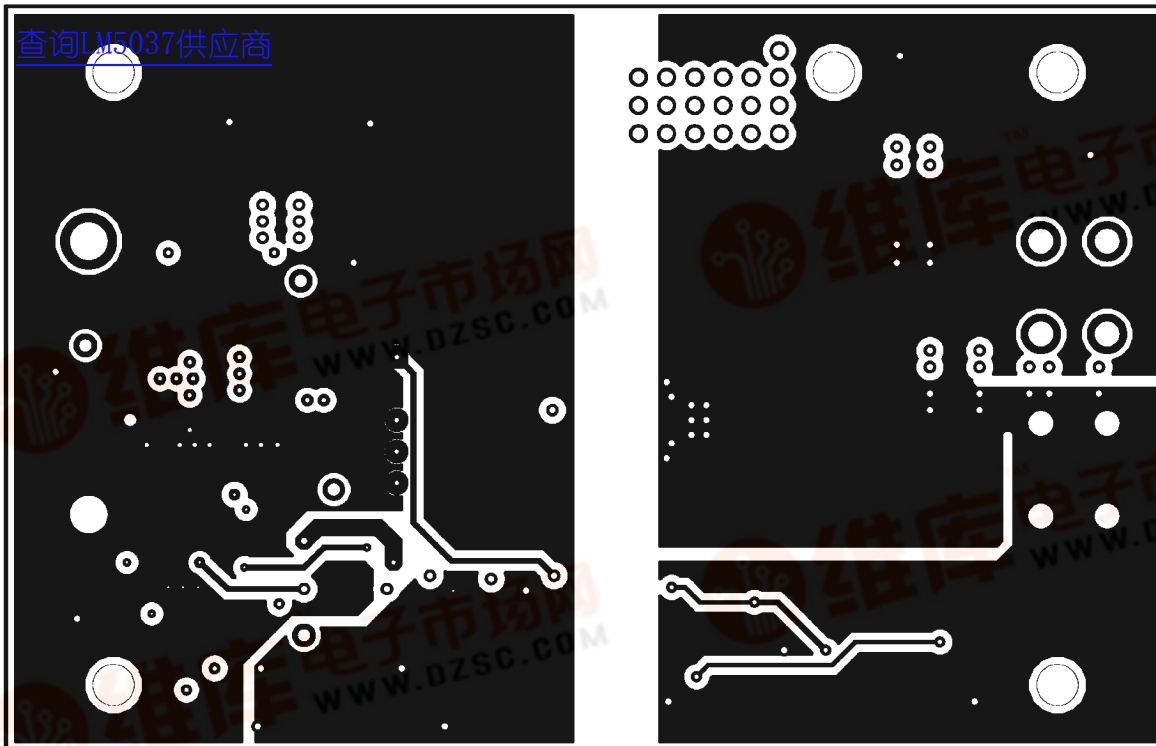


Top Layer

30080111

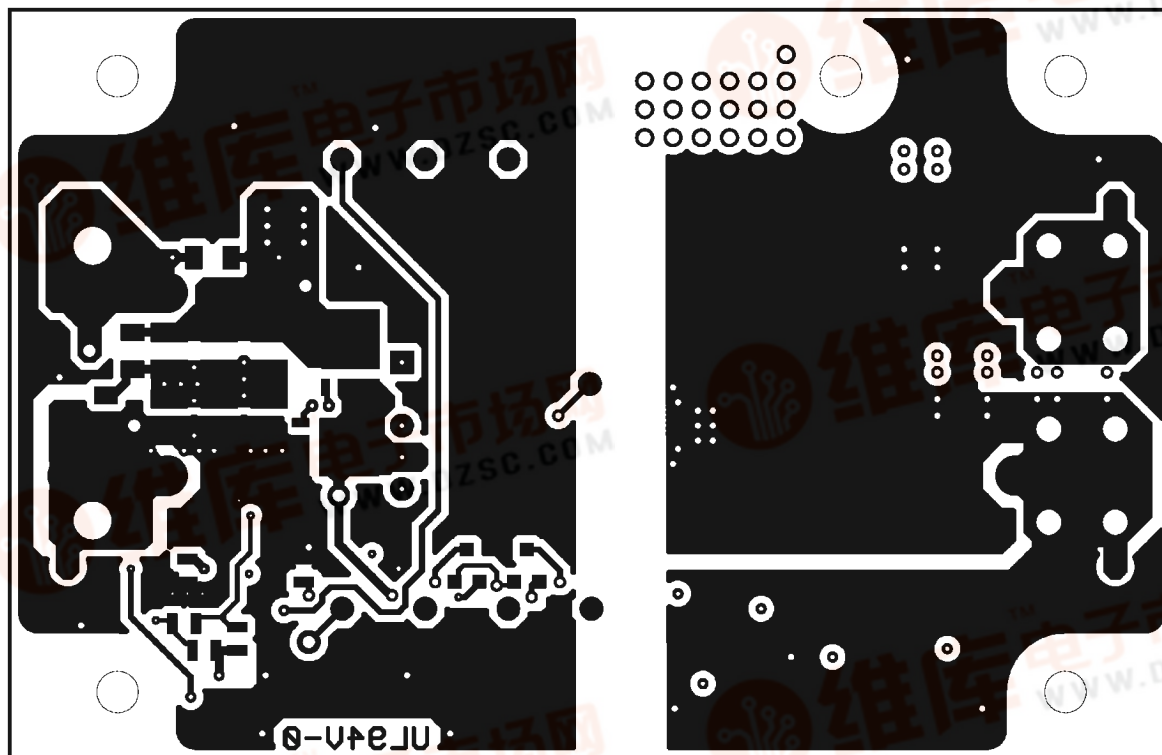


Mid Layer-1



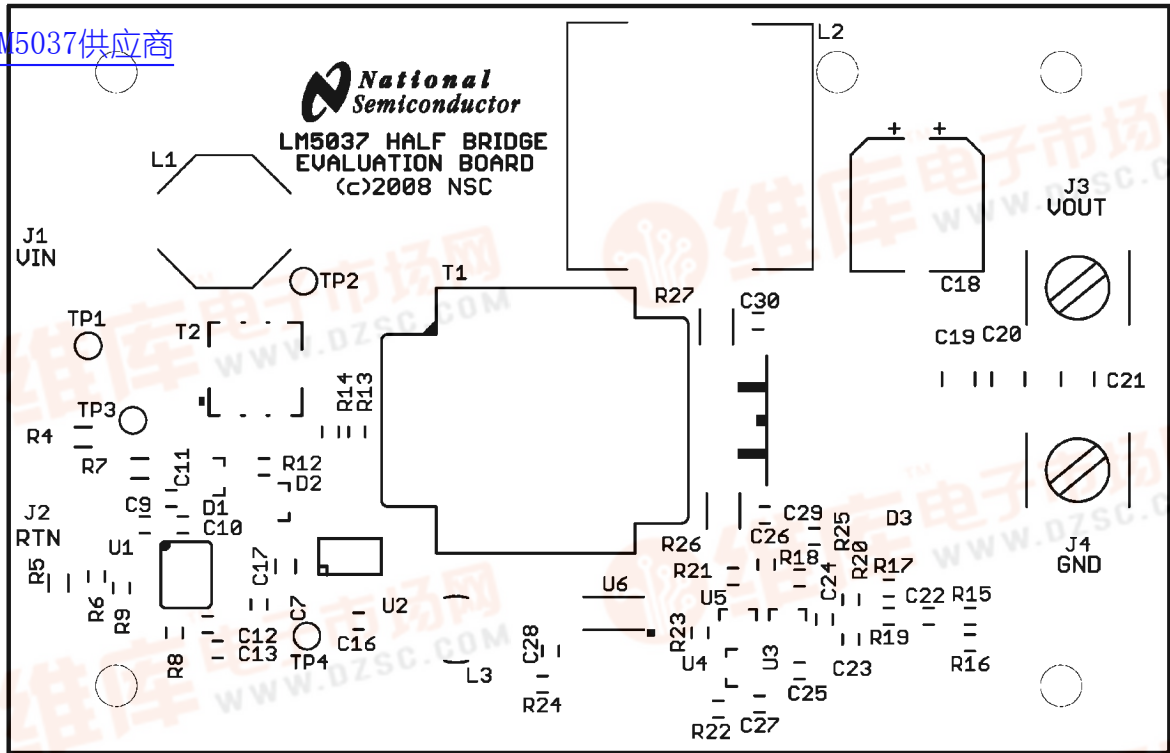
Mid Layer-2

30080113



Bottom Layer

30080114

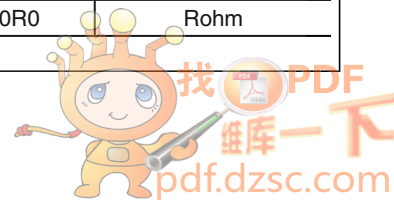
[查询LM5037供应商](#)


Top Silk Screen

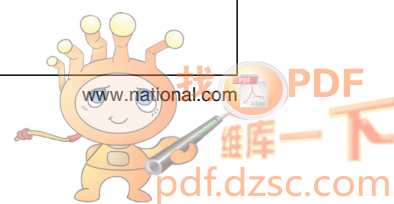
30080115

Bill of Materials

Part	Value	Package	Part Number	Manufacturer
C1,C2,C3,C4,C5,C6	4.7 μ F	C1210	GCM32ER71H475KA55L	Murata
C7	4.7 μ F	C1206	GRM31CR71E475KA88L	Murata
C8,C10,C11,C15,C25,C26	0.1 μ F	C0805	GCM21BR72A104KA37L	Murata
C12	0.22 μ F	C0805	GRM219R71C224KA01D	Murata
C9,C29,C30	1000 pF	C0805	C0805C102K1RACTU	Kemet
C14,C24	100 pF	C0805	GRM2165C1H101JA01D	Murata
C16	0.047 μ F	C0805	GRM21BR72A473KA01L	Murata
C17	0.47 μ F	C0805	GRM21BR71E474KC01L	Murata
C18	680 μ F	CAPSM_AL_40X45	PCJ1A681MCL1GS	Nippon-Chemicon
C19,C20	47 μ F	C1210	GRM32ER61A476KE20L	Murata
C21	1.0 μ F	C1210	C1210C105K5RACTU	Kemet
C28	1.0 μ F	C0805	GRM21BR71H105KA12L	Murata
C13, C22,C23,C27	10000 pF	C0805	GRM216R71H103KA01D	Murata
D1,D2,D4,D5	Schottky - 1 Pair Series Connection	SOT23	BAS70-04	Diodes Inc
D3	25A,35V Schottky Diode	D2-Pack	MBRB2535	On Semiconductor
L1	2.2 μ H	SMD Inductor	SRU1048-2R2Y	Bourns
L2	6.0 μ H	SMD Inductor	HC2LP6RO	Coiltronics
L3	3.3 μ H	SMD Inductor	SDR0503-332J	Bourns
T1	MAIN XFMR	SM PLANAR	HA3648-BL	Coil Craft
T2	Current XFMR	SMD	P8208	Pulse
Q1,Q2	N Channel,100 V MOSFET	SOIC-8	SI4484	Vishay/Siliconix
R1	10.0 Ω	R1206	MCR18EZHF10R0	Rohm



Part	Value	Package	Part Number	Manufacturer
B2,B3 LM5037 供应商	200 k Ω	R1206	MCR18EZHF2003	Rohm
R4	140 k Ω	R1206	MCR18EZHF1403	Rohm
R5	150 k Ω	R1206	MCR18EZHF1503	Rohm
R6	5.76 k Ω	R0805	MCR10EZHF5761	Rohm
R7	49.9 Ω	R1206	MCR18EZHF49R9	Rohm
R8,R17,R18,R20	20.0 k Ω	R0805	MCR10EZHF2002	Rohm
R9	34.8 k Ω	R0805	MCR10EZHF3482	Rohm
R10	499 Ω	R0805	MCR10EZHF4990	Rohm
R11	3.01 Ω	R0805	RC0805FR-073R01L	Yageo
R12,R21	10.0 k Ω	R0805	MCR10EZHF1002	Rohm
R13,R14,R15	10.0 Ω	R0805	MCR10EZHF100	Rohm
R16,R19,R25	100 Ω	R0805	MCR10EZHF1000	Rohm
R22	0 Ω	R0805	MCR10EZHF000	Rohm
R23	1.50 k Ω	R0805	MCR10EZHF1501	Rohm
R24	249 Ω	R0805	MCR10EZHF2490	Rohm
R26,R27	15.0 Ω	R2010	CRCW201015R0JNEF	Vishay/Dale
U1	National PWM IC Controller	TSSOP16	LM5037	National Semiconductor
U2	National Dual HV Gate Driver	S08	LM5101BMA	National Semiconductor
U3	OPAMP	SOT23-5	LM8261M5	National Semiconductor
U4	4.1V Voltage Reference	SOT23	LM4040BIM3-4.1	National Semiconductor
U5	2.5V Voltage Reference	SOT23	LM4040BIM3-2.5	National Semiconductor
U6	Opto Coupler	SOP4	PS2811-1M	NEC
J1-J2	Terminal Turret		1509	Keystone Electronics
J3-J4	Terminal Screw, 15A		7693	Keystone Electronics
TP1,TP2,TP3,TP4	Test Point Miniature		1040	Keystone Electronics



[查询LM5037供应商](#)

Notes

For more National Semiconductor product information and proven design tools, visit the following Web sites at:

Products		Design Support	
Amplifiers	www.national.com/amplifiers	WEBENCH® Tools	www.national.com/webench
Audio	www.national.com/audio	App Notes	www.national.com/appnotes
Clock and Timing	www.national.com/timing	Reference Designs	www.national.com/refdesigns
Data Converters	www.national.com/adc	Samples	www.national.com/samples
Interface	www.national.com/interface	Eval Boards	www.national.com/evalboards
LVDS	www.national.com/lvds	Packaging	www.national.com/packaging
Power Management	www.national.com/power	Green Compliance	www.national.com/quality/green
Switching Regulators	www.national.com/switchers	Distributors	www.national.com/contacts
LDOs	www.national.com/ldo	Quality and Reliability	www.national.com/quality
LED Lighting	www.national.com/led	Feedback/Support	www.national.com/feedback
Voltage Reference	www.national.com/vref	Design Made Easy	www.national.com/easy
PowerWise® Solutions	www.national.com/powerwise	Solutions	www.national.com/solutions
Serial Digital Interface (SDI)	www.national.com/sdi	Mil/Aero	www.national.com/milaero
Temperature Sensors	www.national.com/tempsensors	Solar Magic®	www.national.com/solarmagic
Wireless (PLL/VCO)	www.national.com/wireless	Analog University®	www.national.com/AU

THE CONTENTS OF THIS DOCUMENT ARE PROVIDED IN CONNECTION WITH NATIONAL SEMICONDUCTOR CORPORATION ("NATIONAL") PRODUCTS. NATIONAL MAKES NO REPRESENTATIONS OR WARRANTIES WITH RESPECT TO THE ACCURACY OR COMPLETENESS OF THE CONTENTS OF THIS PUBLICATION AND RESERVES THE RIGHT TO MAKE CHANGES TO SPECIFICATIONS AND PRODUCT DESCRIPTIONS AT ANY TIME WITHOUT NOTICE. NO LICENSE, WHETHER EXPRESS, IMPLIED, ARISING BY ESTOPPEL OR OTHERWISE, TO ANY INTELLECTUAL PROPERTY RIGHTS IS GRANTED BY THIS DOCUMENT.

TESTING AND OTHER QUALITY CONTROLS ARE USED TO THE EXTENT NATIONAL DEEMS NECESSARY TO SUPPORT NATIONAL'S PRODUCT WARRANTY. EXCEPT WHERE MANDATED BY GOVERNMENT REQUIREMENTS, TESTING OF ALL PARAMETERS OF EACH PRODUCT IS NOT NECESSARILY PERFORMED. NATIONAL ASSUMES NO LIABILITY FOR APPLICATIONS ASSISTANCE OR BUYER PRODUCT DESIGN. BUYERS ARE RESPONSIBLE FOR THEIR PRODUCTS AND APPLICATIONS USING NATIONAL COMPONENTS. PRIOR TO USING OR DISTRIBUTING ANY PRODUCTS THAT INCLUDE NATIONAL COMPONENTS, BUYERS SHOULD PROVIDE ADEQUATE DESIGN, TESTING AND OPERATING SAFEGUARDS.

EXCEPT AS PROVIDED IN NATIONAL'S TERMS AND CONDITIONS OF SALE FOR SUCH PRODUCTS, NATIONAL ASSUMES NO LIABILITY WHATSOEVER, AND NATIONAL DISCLAIMS ANY EXPRESS OR IMPLIED WARRANTY RELATING TO THE SALE AND/OR USE OF NATIONAL PRODUCTS INCLUDING LIABILITY OR WARRANTIES RELATING TO FITNESS FOR A PARTICULAR PURPOSE, MERCHANTABILITY, OR INFRINGEMENT OF ANY PATENT, COPYRIGHT OR OTHER INTELLECTUAL PROPERTY RIGHT.

LIFE SUPPORT POLICY

NATIONAL'S PRODUCTS ARE NOT AUTHORIZED FOR USE AS CRITICAL COMPONENTS IN LIFE SUPPORT DEVICES OR SYSTEMS WITHOUT THE EXPRESS PRIOR WRITTEN APPROVAL OF THE CHIEF EXECUTIVE OFFICER AND GENERAL COUNSEL OF NATIONAL SEMICONDUCTOR CORPORATION. As used herein:

Life support devices or systems are devices which (a) are intended for surgical implant into the body, or (b) support or sustain life and whose failure to perform when properly used in accordance with instructions for use provided in the labeling can be reasonably expected to result in a significant injury to the user. A critical component is any component in a life support device or system whose failure to perform can be reasonably expected to cause the failure of the life support device or system or to affect its safety or effectiveness.

National Semiconductor and the National Semiconductor logo are registered trademarks of National Semiconductor Corporation. All other brand or product names may be trademarks or registered trademarks of their respective holders.

Copyright© 2009 National Semiconductor Corporation

For the most current product information visit us at www.national.com



**National Semiconductor
Americas Technical
Support Center**
Email: support@nsc.com
Tel: 1-800-272-9959

**National Semiconductor Europe
Technical Support Center**
Email: europe.support@nsc.com
German Tel: +49 (0) 180 5010 771
English Tel: +44 (0) 870 850 4288

**National Semiconductor Asia
Pacific Technical Support Center**
Email: ap.support@nsc.com

**National Semiconductor Japan
Technical Support Center**
Email: jpn.feedback@nsc.com