

# LMH1981 Evaluation Board Instruction Manual

查询LMH1981供应商

National Semiconductor  
Application Note 1599  
February 11, 2009



## General Description

The LMH1981 Evaluation Board can be used to evaluate the LMH1981 Multi-Format Sync Separator and as a reference for designing the PCB layout. Refer to the LMH1981 datasheet for more information on PCB layout considerations.

## Power Supply

The board should be powered with a clean supply voltage of 3.3V to 5.0V using the banana jacks  $V_{CC}$  (J2) and GND (J3). The supply should be well-regulated within  $\pm 5\%$  variation of the voltage range and should not be shared directly with other digital circuitry.

## Video Input

A high-quality DC-coupled video source should be connected to the video input BNC (J1), which is terminated on-board via a  $75\Omega$  load resistor. For AC-coupled video sources, it may be necessary to reduce the value of the input coupling capacitor (C4) as described in the datasheet; otherwise, sync loss may occur during significant changes in video average picture lev-

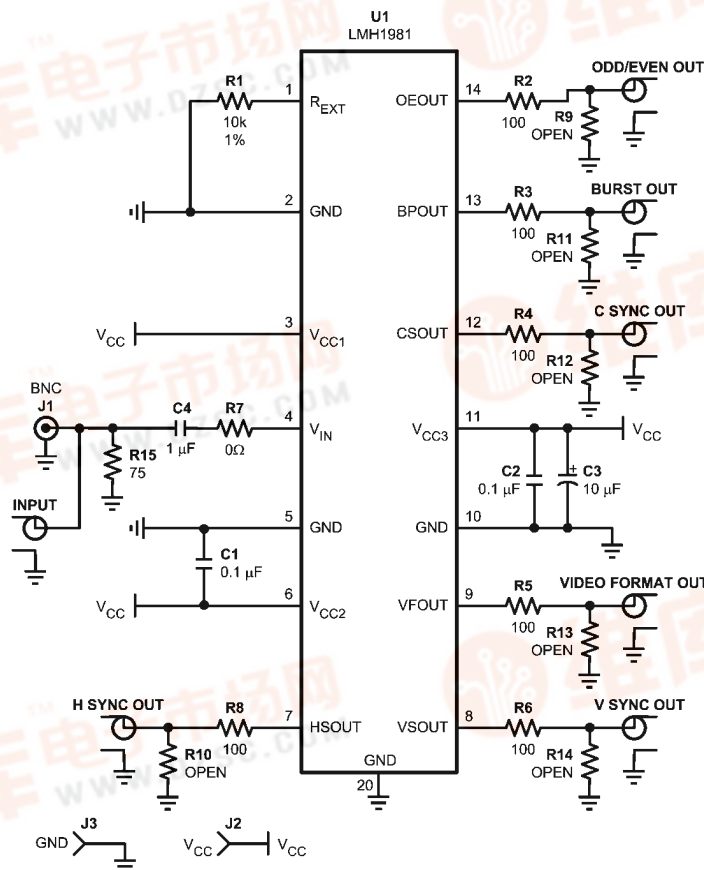
el (e.g. random white-to-black field transitions). It is recommended to drive the LMH1981 input by a professional-grade DC-coupled video reference.

Because the input can accept either SD or HD video inputs, the PCB footprints for the chroma filter components were not populated. For SD composite video inputs, it may be necessary to use a RC low-pass filter to attenuate the chroma component so it does not extend below the 50% sync level and also to improve overall signal-to-noise ratio. The RC filter cutoff frequency is typically set between 0.5 MHz and 2 MHz, which corresponds to chroma attenuation between 17 dB and 6 dB for a 3.58 MHz subcarrier (NTSC). For HD video inputs, it is suggested to bypass any composite video filtering, as it may reduce the bandwidth of the HD tri-level sync signal and thus increase timing jitter on the HSync output.

## Test Points

Test points are provided to probe the input and output signals using oscilloscope probes with high input impedance and low capacitance.

## Board Schematic

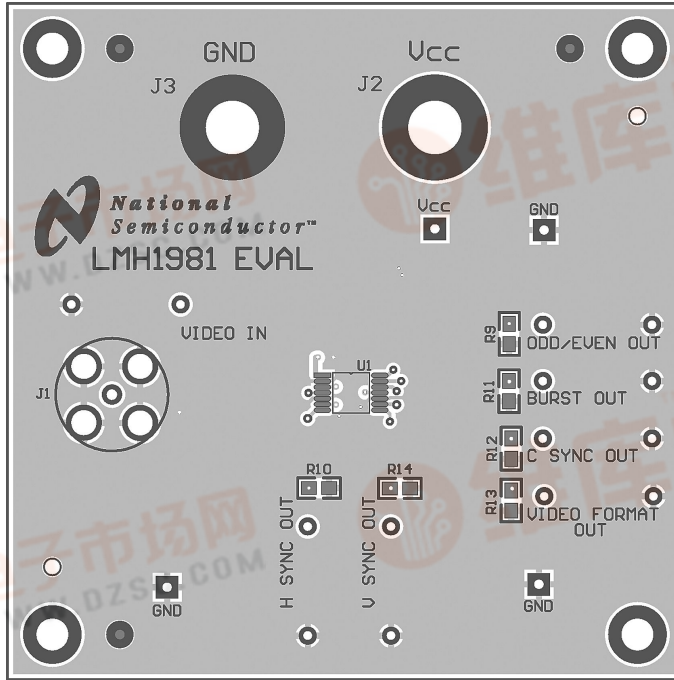


30012601



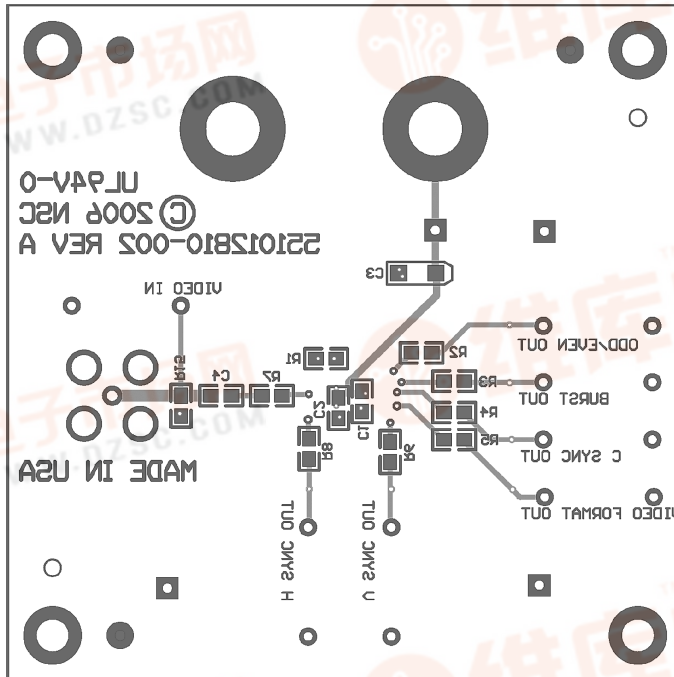
# Board Layout

查询LMH1981供应商



Top Side

30012604



Bottom Side

30012605



## Bill of Material

[查询LMH1981供应商](#)

Item	Mfr. Part Number	Part Description	Qty	Ref Designator	Remark
1	551012810-002A	LMH1981MTEVAL	1		
2	LMH1981MT	TSSOP-14	1	U1	
3		Cer Cap 0.1 $\mu$ F 25V X7R 0805	2	C1,C2	
4		Cer Cap 1 $\mu$ F 10V X5R 0805	1	C4	
5		Tant Cap 10 $\mu$ F 10V TANT-A (3216)	1	C3	
6		Res 10 k $\Omega$ 0.125W 1% 0805	1	R1	
7		Res 75 $\Omega$ 0.125W 1% 0805	1	R15	
8		Res 100 $\Omega$ 0.125W 1% 0805	6	R2-6,R8	
9		Res 0 $\Omega$ 0.125W 1% 0805	1	R7	
10		Res 10 k $\Omega$ 0.125W 1% 0805	6	R9-14	OPEN
11	112404	Amphenol BNC Coaxial	1	J1	
12	164-R104B-EX	Kobiconn Banana Jack Black	1	J3	
13	164-R104R-EX	Kobiconn Banana Jack Red	2	J2	

[查询LMH1981供应商](#)

## Notes

For more National Semiconductor product information and proven design tools, visit the following Web sites at:

Products		Design Support	
Amplifiers	<a href="http://www.national.com/amplifiers">www.national.com/amplifiers</a>	WEBENCH® Tools	<a href="http://www.national.com/webench">www.national.com/webench</a>
Audio	<a href="http://www.national.com/audio">www.national.com/audio</a>	App Notes	<a href="http://www.national.com/appnotes">www.national.com/appnotes</a>
Clock and Timing	<a href="http://www.national.com/timing">www.national.com/timing</a>	Reference Designs	<a href="http://www.national.com/refdesigns">www.national.com/refdesigns</a>
Data Converters	<a href="http://www.national.com/adc">www.national.com/adc</a>	Samples	<a href="http://www.national.com/samples">www.national.com/samples</a>
Interface	<a href="http://www.national.com/interface">www.national.com/interface</a>	Eval Boards	<a href="http://www.national.com/evalboards">www.national.com/evalboards</a>
LVDS	<a href="http://www.national.com/lvds">www.national.com/lvds</a>	Packaging	<a href="http://www.national.com/packaging">www.national.com/packaging</a>
Power Management	<a href="http://www.national.com/power">www.national.com/power</a>	Green Compliance	<a href="http://www.national.com/quality/green">www.national.com/quality/green</a>
Switching Regulators	<a href="http://www.national.com/switchers">www.national.com/switchers</a>	Distributors	<a href="http://www.national.com/contacts">www.national.com/contacts</a>
LDOs	<a href="http://www.national.com/ldo">www.national.com/ldo</a>	Quality and Reliability	<a href="http://www.national.com/quality">www.national.com/quality</a>
LED Lighting	<a href="http://www.national.com/led">www.national.com/led</a>	Feedback/Support	<a href="http://www.national.com/feedback">www.national.com/feedback</a>
Voltage Reference	<a href="http://www.national.com/vref">www.national.com/vref</a>	Design Made Easy	<a href="http://www.national.com/easy">www.national.com/easy</a>
PowerWise® Solutions	<a href="http://www.national.com/powerwise">www.national.com/powerwise</a>	Solutions	<a href="http://www.national.com/solutions">www.national.com/solutions</a>
Serial Digital Interface (SDI)	<a href="http://www.national.com/sdi">www.national.com/sdi</a>	Mil/Aero	<a href="http://www.national.com/milaero">www.national.com/milaero</a>
Temperature Sensors	<a href="http://www.national.com/tempsensors">www.national.com/tempsensors</a>	SolarMagic™	<a href="http://www.national.com/solarmagic">www.national.com/solarmagic</a>
Wireless (PLL/VCO)	<a href="http://www.national.com/wireless">www.national.com/wireless</a>	Analog University®	<a href="http://www.national.com/AU">www.national.com/AU</a>

THE CONTENTS OF THIS DOCUMENT ARE PROVIDED IN CONNECTION WITH NATIONAL SEMICONDUCTOR CORPORATION ("NATIONAL") PRODUCTS. NATIONAL MAKES NO REPRESENTATIONS OR WARRANTIES WITH RESPECT TO THE ACCURACY OR COMPLETENESS OF THE CONTENTS OF THIS PUBLICATION AND RESERVES THE RIGHT TO MAKE CHANGES TO SPECIFICATIONS AND PRODUCT DESCRIPTIONS AT ANY TIME WITHOUT NOTICE. NO LICENSE, WHETHER EXPRESS, IMPLIED, ARISING BY ESTOPPEL OR OTHERWISE, TO ANY INTELLECTUAL PROPERTY RIGHTS IS GRANTED BY THIS DOCUMENT.

TESTING AND OTHER QUALITY CONTROLS ARE USED TO THE EXTENT NATIONAL DEEMS NECESSARY TO SUPPORT NATIONAL'S PRODUCT WARRANTY. EXCEPT WHERE MANDATED BY GOVERNMENT REQUIREMENTS, TESTING OF ALL PARAMETERS OF EACH PRODUCT IS NOT NECESSARILY PERFORMED. NATIONAL ASSUMES NO LIABILITY FOR APPLICATIONS ASSISTANCE OR BUYER PRODUCT DESIGN. BUYERS ARE RESPONSIBLE FOR THEIR PRODUCTS AND APPLICATIONS USING NATIONAL COMPONENTS. PRIOR TO USING OR DISTRIBUTING ANY PRODUCTS THAT INCLUDE NATIONAL COMPONENTS, BUYERS SHOULD PROVIDE ADEQUATE DESIGN, TESTING AND OPERATING SAFEGUARDS.

EXCEPT AS PROVIDED IN NATIONAL'S TERMS AND CONDITIONS OF SALE FOR SUCH PRODUCTS, NATIONAL ASSUMES NO LIABILITY WHATSOEVER, AND NATIONAL DISCLAIMS ANY EXPRESS OR IMPLIED WARRANTY RELATING TO THE SALE AND/OR USE OF NATIONAL PRODUCTS INCLUDING LIABILITY OR WARRANTIES RELATING TO FITNESS FOR A PARTICULAR PURPOSE, MERCHANTABILITY, OR INFRINGEMENT OF ANY PATENT, COPYRIGHT OR OTHER INTELLECTUAL PROPERTY RIGHT.

## LIFE SUPPORT POLICY

**NATIONAL'S PRODUCTS ARE NOT AUTHORIZED FOR USE AS CRITICAL COMPONENTS IN LIFE SUPPORT DEVICES OR SYSTEMS WITHOUT THE EXPRESS PRIOR WRITTEN APPROVAL OF THE CHIEF EXECUTIVE OFFICER AND GENERAL COUNSEL OF NATIONAL SEMICONDUCTOR CORPORATION.** As used herein:

Life support devices or systems are devices which (a) are intended for surgical implant into the body, or (b) support or sustain life and whose failure to perform when properly used in accordance with instructions for use provided in the labeling can be reasonably expected to result in a significant injury to the user. A critical component is any component in a life support device or system whose failure to perform can be reasonably expected to cause the failure of the life support device or system or to affect its safety or effectiveness.

National Semiconductor and the National Semiconductor logo are registered trademarks of National Semiconductor Corporation. All other brand or product names may be trademarks or registered trademarks of their respective holders.

Copyright© 2009 National Semiconductor Corporation

For the most current product information visit us at [www.national.com](http://www.national.com)



**National Semiconductor Americas Technical Support Center**  
Email: [support@nsc.com](mailto:support@nsc.com)  
Tel: 1-800-272-9959

**National Semiconductor Europe Technical Support Center**  
Email: [europe.support@nsc.com](mailto:europe.support@nsc.com)  
German Tel: +49 (0) 180 5010 771  
English Tel: +44 (0) 870 850 4288

**National Semiconductor Asia Pacific Technical Support Center**  
Email: [ap.support@nsc.com](mailto:ap.support@nsc.com)

**National Semiconductor Japan Technical Support Center**  
Email: [jpn.feedback@nsc.com](mailto:jpn.feedback@nsc.com)

