



# TFA9879

**Mono BTL class-D audio amplifier for portable applications with digital input**

Rev. 02 — 15 October 2010

Product data sheet

## 1. Introduction

The TFA9879 is a high-efficiency filter-free mono class-D audio amplifier with two separate digital inputs for mobile applications.

## 2. General description

The TFA9879 contains a processor that supports a range of sound processing features including a 5-band parametric equalizer, separate bass and treble control, a dynamic range compressor, soft clip control and volume control. Excellent audio performance combined with high Power Supply Rejection Ratio (PSRR) is achieved through the use of a closed loop configuration.

Two independent digital audio inputs (I<sup>2</sup>S-bus / PCM / IOM2) are available for connecting both a baseband and a multimedia processor.

The TFA9879 is available in a HVQFN24 package.

## 3. Features and benefits

### 3.1 General features

- Closed loop amplifier for:
  - ◆ High power supply rejection ratio
  - ◆ Excellent audio performance
- Digital input for high RF immunity
- High efficiency for maximizing battery life
- Wide supply voltage range (fully operational from 2.5 V to 5.5 V)
- Delivers high output power into 4  $\Omega$  and 8  $\Omega$  load impedances
- Phase-Locked Loop (PLL); no system clock required
- Protection including diagnostics via I<sup>2</sup>C-bus:
  - ◆ OverCurrent Protection (OCP) to protect against short circuits across the speaker, to the supply line or to ground
  - ◆ OverTemperature Protection (OTP)
  - ◆ Digital inputs protected with UnderFrequency Protection (UFP), OverFrequency Protection (OFP) and Invalid Bit-clock Protection (IBP)
- 'Pop noise' free at power-up/power down, during sample rate switching and when switching between digital inputs
- Four separate I<sup>2</sup>C-bus addresses for multi-channel applications



- 1.8 V / 3.3 V tolerant digital inputs
- Only three external components required

### 3.2 Programmable Digital Sound Processor (DSP)

- Digital volume control (–70 dB to +24 dB)
- Digital parametric 5-band equalizer
- Bass and treble control (–18 dB to +18 dB)
- Dynamic range compressor:
  - ◆ Programmable attack and release levels
  - ◆ Programmable attack and release rates
- Soft and hard mute control
- Programmable DC blocking via high-pass filter
- Power limiter (0 dB to –124 dB in 0.5 dB steps)
- Zero crossing volume control
- Stereo-to-mono down-mix function

### 3.3 Interface format support for digital audio inputs

- I<sup>2</sup>S formats ( $f_s = 8$  kHz to 96 kHz):
  - ◆ Philips standard I<sup>2</sup>S-bus
  - ◆ Japanese I<sup>2</sup>S-bus MSB-justified
  - ◆ Sony I<sup>2</sup>S-bus LSB-justified
- PCM / IOM2 formats ( $f_s = 8$  kHz or  $f_s = 16$  kHz):
  - ◆ Long frame sync
  - ◆ Short frame sync

## 4. Applications

- Mobile phones
- Portable Navigation Devices (PND)
- PDAs
- Notebooks
- Portable gaming devices
- MP3 and MP4 players

## 5. Quick reference data

**Table 1. Quick reference data**

All parameters are guaranteed for  $V_{DDD} = 1.8\text{ V}$ ;  $V_{DDP} = 3.7\text{ V}$ ;  $R_L = 8\ \Omega$ ;  $L_L = 44\ \mu\text{H}$ ;  $f_i = 1\text{ kHz}$ ;  $f_s = 48\text{ kHz}$ ; clip control off;  $T_{amb} = 25\text{ }^\circ\text{C}$  unless otherwise specified.

Symbol	Parameter	Conditions	Min	Typ	Max	Unit
$V_{DDP}$	power supply voltage	on pin $V_{DDP}$	2.5	-	5.5	V
$V_{DDD}$	digital supply voltage	on pin $V_{DDD}$	1.65	1.8	1.95	V
$I_P$	supply current	on pin $V_{DDP}$ ; Amplifier mode with load; soft mute on	-	5.7	-	mA
		on pin $V_{DDP}$ ; Power-down mode	-	-	20	$\mu\text{A}$
$I_{DDD}$	digital supply current	on pin $V_{DDD}$ ; Amplifier mode	-	1.2	-	mA
		on pin $V_{DDD}$ ; Power-down mode	[1]	5	15	$\mu\text{A}$
$P_{O(RMS)}$	RMS output power	$R_L = 8\ \Omega$				
		THD + N = 1 %	0.65	0.7	-	W
		THD + N = 10 %	-	0.85	-	W
		$R_L = 4\ \Omega$				
		THD + N = 1 %	-	1.2	-	W
		THD + N = 10 %	-	1.5	-	W
		$R_L = 8\ \Omega$ ; $V_{DDP} = 4.2\text{ V}$				
		THD + N = 1 %	-	0.9	-	W
		THD + N = 10 %	-	1.1	-	W
		$R_L = 4\ \Omega$ ; $V_{DDP} = 4.2\text{ V}$				
		THD + N = 1 %	-	1.6	-	W
		THD + N = 10 %	-	1.95	-	W
		$R_L = 8\ \Omega$ ; $V_{DDP} = 5.0\text{ V}$				
		THD + N = 1 %	-	1.35	-	W
		THD + N = 10 %	-	1.6	-	W
		$R_L = 4\ \Omega$ ; $V_{DDP} = 5.0\text{ V}$				
		THD + N = 1 %	-	2.35	-	W
		THD + N = 10 %	-	2.75	-	W
$\eta_{po}$	output power efficiency	$P_{O(RMS)} = 850\text{ mW}$	-	92	-	%

[1] After switching from Off/Amplifier mode to Power-down mode.

## 6. Ordering information

**Table 2. Ordering information**

Type number	Package		
	Name	Description	Version
TFA9879HN	HVQFN24	plastic thermal enhanced very thin quad flat package; no leads; 24 terminals; body 4 x 4 x 0.85 mm	SOT616_3

7. Block diagram

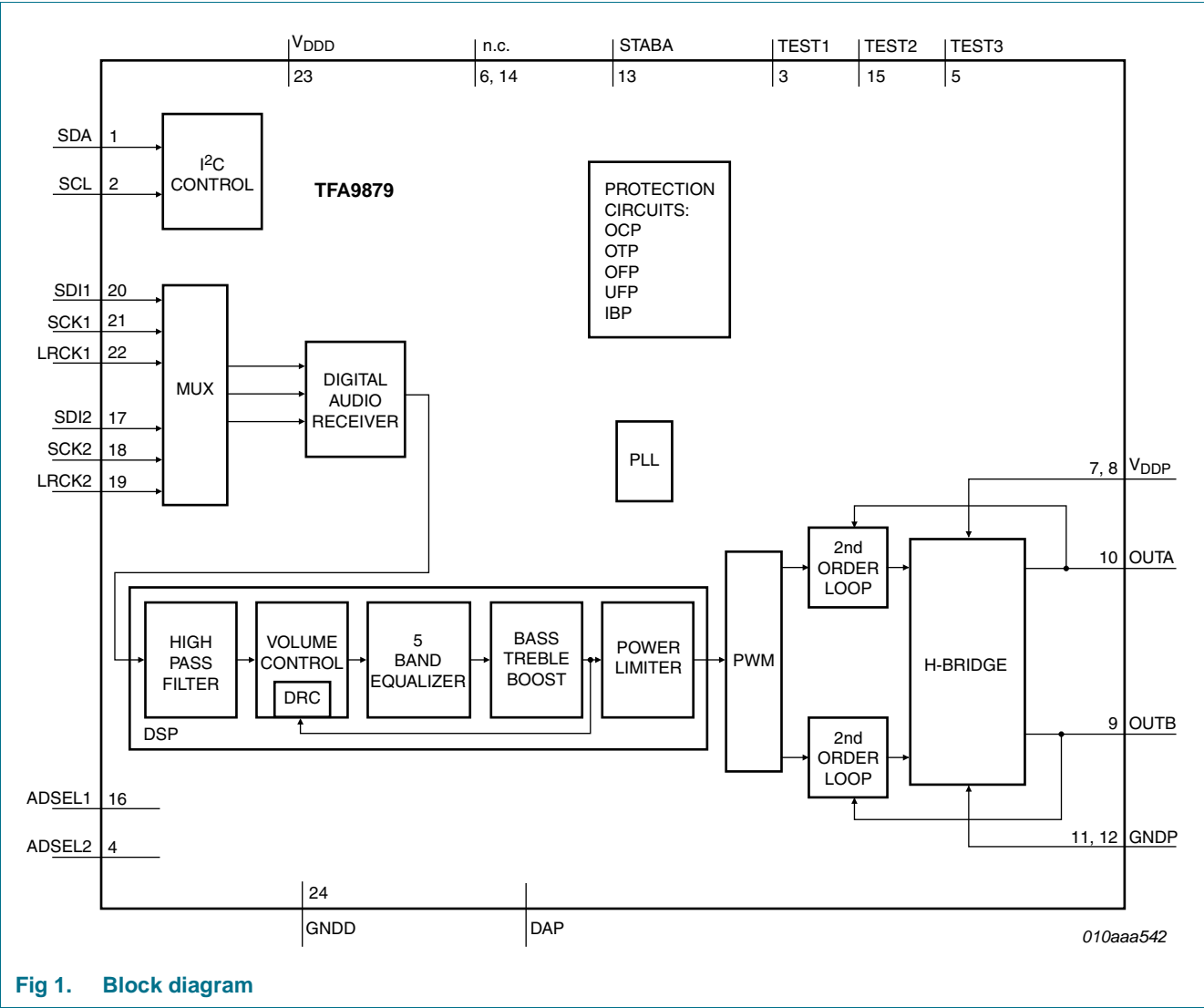
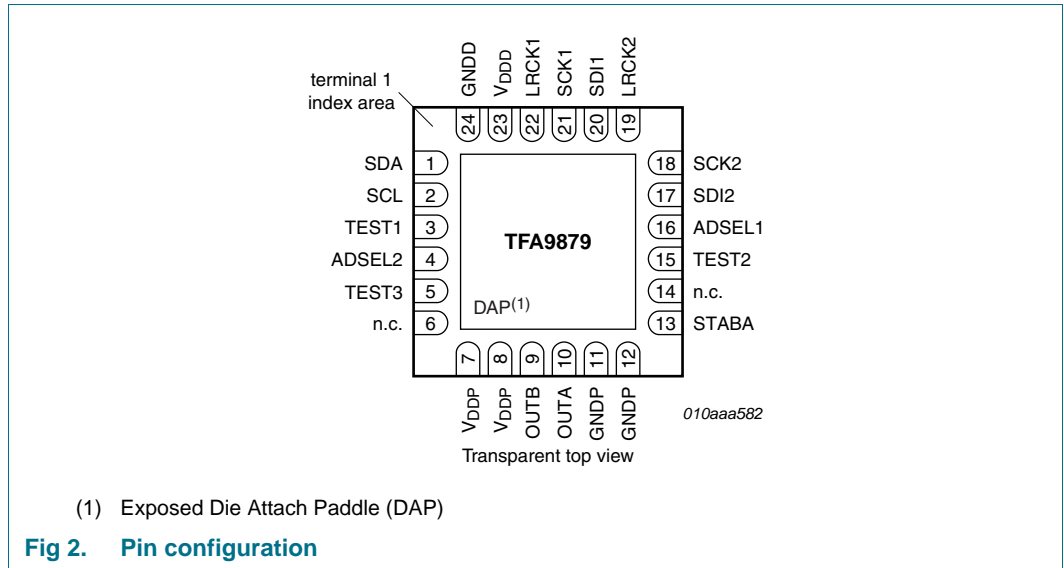


Fig 1. Block diagram

## 8. Pinning information

### 8.1 Pinning



### 8.2 Pin description

**Table 3. Pin description**

Symbol	Pin	Pin Type	Description
SDA	1	IO	I <sup>2</sup> C-bus data input/output
SCL	2	I	I <sup>2</sup> C-bus bit clock input
TEST1	3	I	test signal input 1; for test purposes only; connect to PCB ground
ADSEL2	4	I	address selection input 2
TEST3	5	I	test signal input 3; for test purposes only; connect to PCB ground
n.c.	6	-	not connected; connect to PCB ground
V <sub>DDP</sub>	7, 8	P	analog supply voltage (2.5 V to 5.5 V)
OUTB	9	O	output B (negative)
OUTA	10	O	output A (positive)
GNDP	11, 12	P	analog ground, PCB ground reference
STABA	13	O	1.8 V analog stabilizer output
n.c.	14	-	not connected; connect to PCB ground
TEST2	15	I	test signal input 2; for test purposes only; connect to PCB ground
ADSEL1	16	I	address selection input 1
SDI2	17	I	digital audio data input 2
SCK2	18	I	digital audio bit clock input 2
LRCK2	19	I	digital audio word select input 2
SDI1	20	I	digital audio data input 1
SCK1	21	I	digital audio bit clock input 1
LRCK1	22	I	digital audio word select input 1

Table 3. Pin description ...continued

Symbol	Pin	Pin Type	Description
V <sub>DDD</sub>	23	P	digital supply voltage (1.8 V)
GNDD	24	P	digital ground, PCB ground reference
DAP	-	P	exposed Die Attached Paddle (DAP); connect to PCB ground

## 9. Functional description

The TFA9879 is a high-efficiency mono Bridge Tied Load (BTL) class-D amplifier with digital audio inputs. It supports all commonly used formats.

The key functional blocks of the TFA9879 are shown in [Figure 1](#). In the digital domain, the audio signal is processed and converted into a Pulse Width Modulated (PWM) signal using a 3-level modulation. In the analog domain, the PWM signal is amplified using a second order feedback loop.

The audio signal-processing path is described below:

1. The MUX selects the serial interface input to be used.
2. The digital audio receiver translates the serial input signal into a standard internal mono audio stream.
3. The programmable high-pass filter blocks DC signals and low frequency signals.
4. The volume control provides both gain and attenuation functionality and can be adjusted by the user or dynamically via the Dynamic Range Compressor (DRC). The volume control can be used to adjust the signal level between –70 dB and +24 dB.
5. The 5-band parametric equalizer can be used to equalize the mono audio stream. It can be used for speaker transfer curve compensation to optimize the audio performance of the speakers.
6. The bass and treble boost function provides another way to adjust the sound.
7. The power limiter limits the maximum output signal of the TFA9879. The power limiter settings are 0 dB to –124 dB in steps of 0.5 dB. This function can be used to limit the maximum output power delivered to the speakers at a fixed supply voltage and speaker impedance.
8. The PWM controller block converts the audio signal into a 3-level modulated PWM signal. The 3-level modulation provides a high signal-to-noise performance and eliminates clock jitter noise.
9. The second order feedback loop ensures excellent audio performance and high power supply rejection ratio.
10. The H-BRIDGE allows the TFA9879 to deliver the required output power between terminals OUTA and OUTB.

The internal clocks of the TFA9879 are derived from the digital audio interface (SCK1 and SCK2) using a PLL. The reference input for the PLL is selected via the digital input MUX.

The audio signal path can be selected via the I<sup>2</sup>C-bus interface.

The PLL block generates the system clock.

The following protection circuits are built into the TFA9879:

- OverTemperature Protection (OTP)
- OverCurrent Protection (OCP)
- UnderFrequency Protection (UFP)
- OverFrequency Protection (OFP)
- Invalid Bit-clock Protection (IBP)
- DC-blocking

## 9.1 Operating modes

The TFA9879 supports the following operating modes, which are controlled via the I<sup>2</sup>C-bus interface:

- **Power-down mode**, used to switch off the device; current consumption is reduced to a minimum; the I<sup>2</sup>C-bus remains operational; the PWM outputs are disabled.
- **Off mode**, in which the class-D amplifier is switched off; the TFA9879 is completely biased and the PWM outputs are disabled.
- **Amplifier mode**, in which the digital inputs are used to generate a signal between OUTA and OUTB.

The TFA9879 device control settings are detailed in [Table 21](#).

### 9.1.1 Power-up/power-down

The power-up and power-down timing of the TFA9879 is illustrated in [Figure 3](#). The external power supply levels,  $V_{DDP}$  and  $V_{DDD}$ , should be within the specified operating ranges before the operating mode is selected. Bit POWERUP in the Device control register ([Table 21](#)) must be set to 1 before the operating mode can be selected via bits OPMODE. After the turn-on delay ( $t_{d(on)}$ ), the device automatically generates a soft un-mute function. A soft mute function is generated when OPMODE is set to 0. The TFA9879 should be set to Power-down mode before the power supplies are disconnected or turned off.

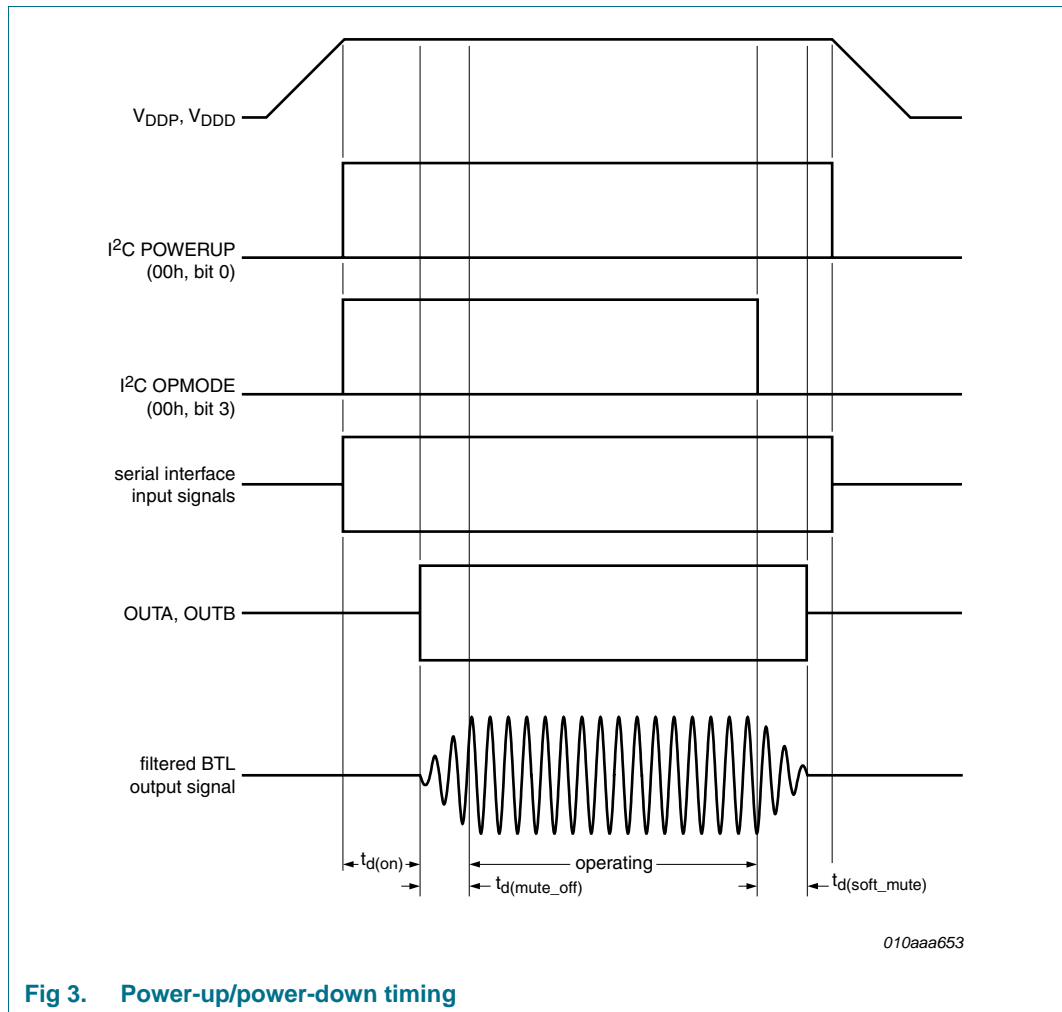


Fig 3. Power-up/power-down timing

### 9.1.2 Supported Digital audio data formats

The TFA9879 supports a commonly used range of I<sup>2</sup>S, PCM and IOM2 digital audio data formats. The I<sup>2</sup>S formats, selected via bits I2S\_SET in the Serial interface control register (Table 22), are listed in Table 4. The PCM/IOM2 formats are listed in Table 5. The TFA9879 automatically detects the number of slots by measuring the ratio between the sync frequency (8 kHz) and the data clock. Table 24 details the I<sup>2</sup>C settings for the PCM/IOM2 formats.



Table 4. I<sup>2</sup>S-supported digital audio data formats

SCK frequency	Interface format (MSB first)	Supported data format
32 f <sub>s</sub>	I <sup>2</sup> S (Philips) standard	up to 16-bit data
32 f <sub>s</sub>	MSB-justified	up to 16-bit data
32 f <sub>s</sub>	LSB-justified - 16 bits	16-bit data
64 f <sub>s</sub>	I <sup>2</sup> S (Philips) standard	up to 24-bit data
64 f <sub>s</sub>	MSB-justified	up to 24-bit data
64 f <sub>s</sub>	LSB-justified - 16 bits	16-bit data
64 f <sub>s</sub>	LSB-justified - 18 bits	18-bit data
64 f <sub>s</sub>	LSB-justified - 20 bits	20-bit data
64 f <sub>s</sub>	LSB-justified - 24 bits	24-bit data

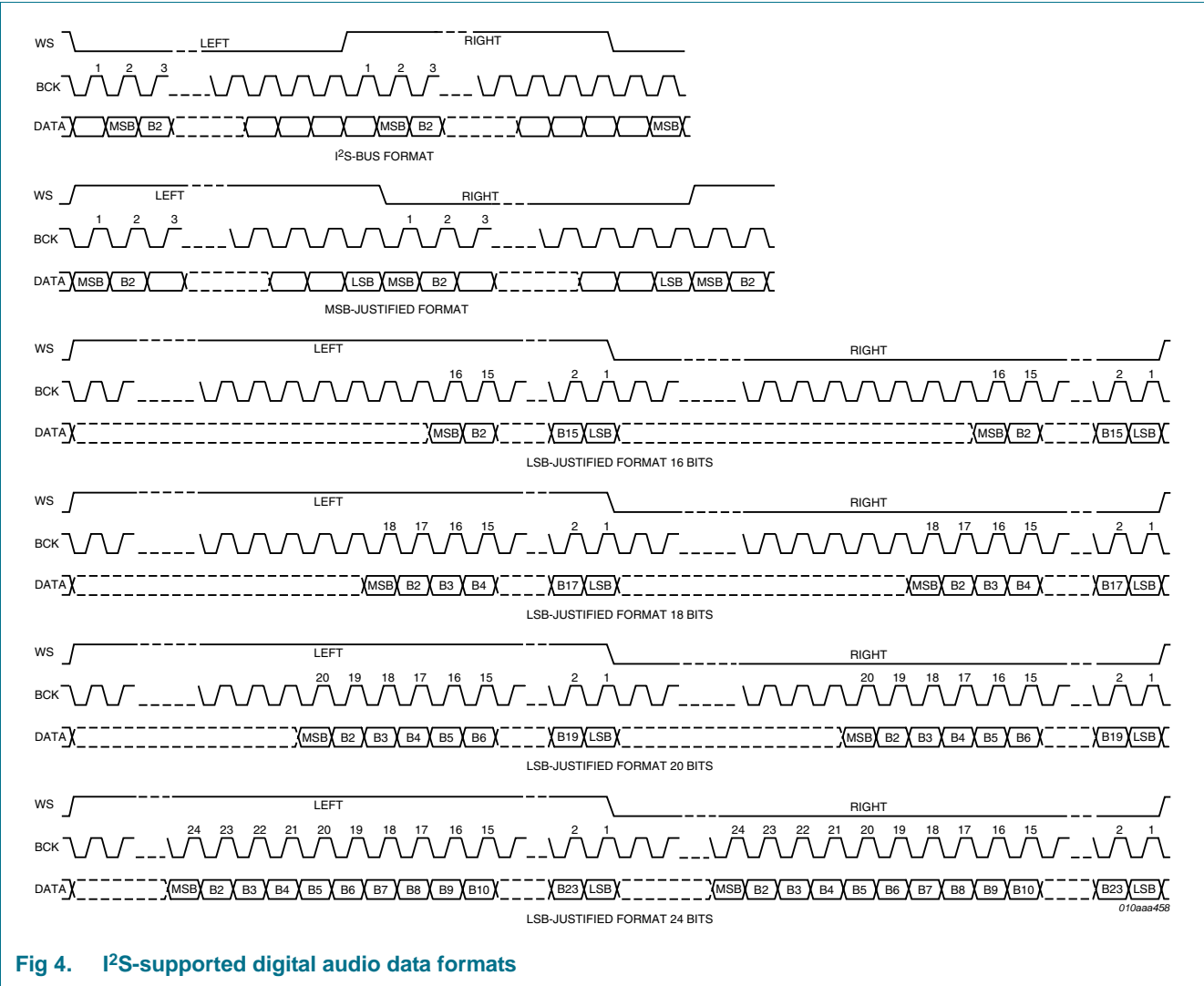
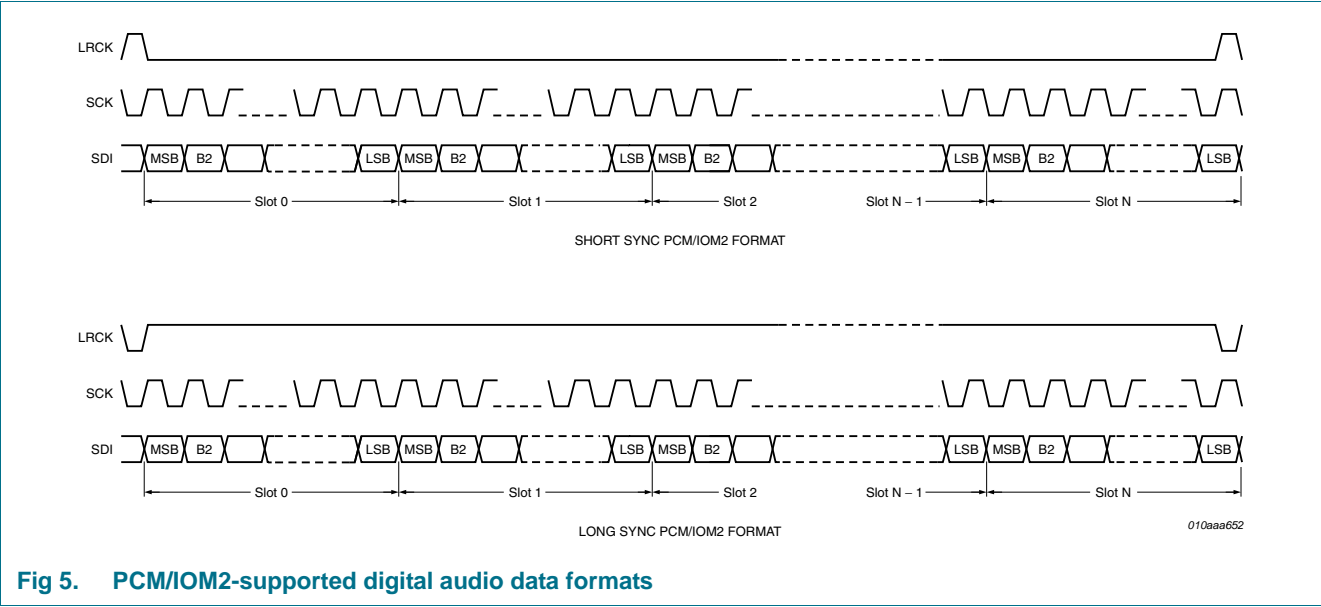


Fig 4. I<sup>2</sup>S-supported digital audio data formats

Table 5. PCM/IOM2-supported audio data formats

Number of slots	$f_s$ (kHz)	Sync frequency (kHz) on LRCK pin	Supported data formats	Data clock (kHz) on SCK pin
2	8 or 16	8	8-bit data	128
2	8 or 16	8	8-bit data	128
4	8 or 16	8	8-bit data	256
4	8 or 16	8	8-bit data	256
6	8 or 16	8	8-bit data	384
8	8 or 16	8	8-bit data	512
12	8 or 16	8	8-bit data	768
16	8 or 16	8	8-bit data	1024
reserved				
2	8 or 16	8	16-bit data	256
3	8 or 16	8	16-bit data	384
4	8 or 16	8	16-bit data	512
6	8 or 16	8	16-bit data	768
8	8 or 16	8	16-bit data	1024
12	8 or 16	8	16-bit data	1536
12	8 or 16	8	16-bit data	1536



## 9.2 Digital Signal Processor (DSP) features

### 9.2.1 Serial interface selection

The TFA9879 contains two serial interfaces. The active interface is selected via bit INPUT\_SEL in the Device control register (see [Table 21](#)). When this bit is toggled, the following sequence is initiated:

- Soft mute is activated for  $128/f_s$  seconds
- The TFA9879 switches to Off mode and the serial interface input is toggled
- The TFA9879 switches back to Operating mode and soft mute is released

### 9.2.2 Mono selection

Mono selection is used to select the digital audio input channel to be amplified. The options are:

- Left channel
- Right channel
- Left + right channels (sum divided by two)

Separate Mono selection is provided for the two serial interfaces via bits MONO\_SEL in the Serial interface control registers (addresses 01h and 03h; see [Table 22](#)).

### 9.2.3 Programmable high-pass filter

The TFA9879 features a first-order high-pass filter on the digital audio input to block DC and low frequency signals. DC values at the output can damage the speaker.

The high-pass filter cut-off frequency is determined by:

- The high-pass filter control setting (bits HP\_CTRL, see [Table 30](#))
- The sample frequency,  $f_s$

The relationship between these parameters and the cut-off frequency is defined in [Equation 1](#):

$$f_{high(-3dB)} = \frac{-f_s \times \ln\left(\frac{4096 - HP\_CTRL}{4096}\right)}{2\pi} \quad (1)$$

HP\_CTRL can be programmed to any integer value between 0 and 511 (see [Table 30](#)). The high-pass filter is bypassed if HP\_CTRL = 0 or bit HPF\_BP in the Bypass control register is set to 1 (see [Table 27](#)).

### 9.2.4 De-emphasis

Digital de-emphasis is sometimes needed, especially with older recordings. Emphasis and de-emphasis originate in the FM transmission, in which the Signal-to-Noise Ratio (SNR) is not flat over the signal band (in fact the SNR gets worse as the signal frequency increases). To achieve good SNR over the complete audio band, the high frequency components of the audio signal were amplified prior to transmission (this is called Emphasis).

The de-emphasis filter is a simple first order filter. The cut-off frequency of the de-emphasis low-pass filter is approximately 3.5 kHz. The TFA9879 de-emphasis filter is supported for four sample frequencies, as detailed in [Table 6](#).

**Table 6. De-emphasis control**

[1:0] Control value <sup>[1]</sup>	f <sub>s</sub> (kHz)
00 <sup>[2]</sup>	de-emphasis inactive
01	32
10	44.1
11	48

[1] Value selected via bits DE\_PHAS in the De-emphasis, soft/hard mute and power limiter control register (see [Table 32](#)).

[2] Default value.

## 9.2.5 Equalizer

The equalizer can be used for speaker curve compensation or for customer equalizer settings, such as jazz, pop, rock or classical music. The equalizer function can be bypassed or configured as 5-band.

### 9.2.5.1 Equalizer band function

The shape of each parametric equalizer band is determined by the following three filter parameters:

- (Relative) center frequency  $\omega = 2\pi(f_c/f_s)$
- Quality factor Q
- Gain factor G

In the above equation, f<sub>c</sub> is the center frequency and f<sub>s</sub> is the sample frequency.

The definition of the quality factor is the center frequency divided by the 3 dB bandwidth (see [Equation 2](#)). In parametric equalizers this is only valid when the gain is set very low (–30 dB).

$$Q = \frac{f_c}{f_2 - f_1}; \quad \begin{aligned} f_1: & \quad 20 \log_{10} \left( \frac{A_{f_1}}{A_{f_c}} \right) = -30 \text{ dB } f_c > f_1 \\ f_2: & \quad 20 \log_{10} \left( \frac{A_{f_2}}{A_{f_c}} \right) = -30 \text{ dB } f_2 > f_c \end{aligned} \quad (2)$$

Each band filter can be programmed to perform a band-suppression (G < 1) or a band-amplification (G > 1) function around the center frequency.

Each band of the TFA9879 equalizer has a second order Regalia-Mitra all-pass filter structure. The structure is shown in [Figure 6](#).

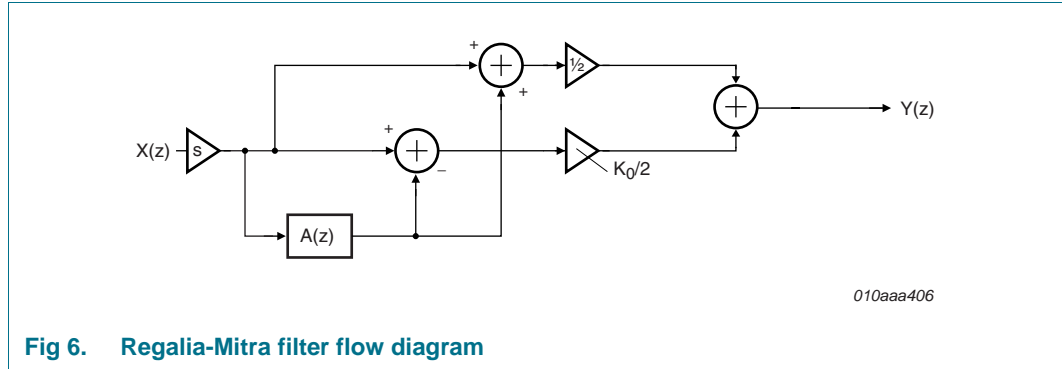


Fig 6. Regalia-Mitra filter flow diagram

The transfer function of this all-pass filter is given in [Equation 3](#):

$$H(z) = 1/2 \cdot (1 + A(z)) + K_0/2 \cdot (1 - A(z)) \quad (3)$$

$A(z)$  is the second order filter structure. The transfer function of  $A(z)$  is given in [Equation 4](#):

$$A(z) = \frac{K_1 + K_2 \cdot (1 + K_1) \cdot Z^{-1} + Z^{-2}}{1 + K_2 \cdot (1 + K_1) \cdot Z^{-1} + K_1 \cdot Z^{-2}} \quad (4)$$

$Z^{-1}$  equals one  $f_s$  delay period. The relationship between the programmable parameters  $K_0$ ,  $K_1$  and  $K_2$  and the filter parameters  $G$ ,  $\omega$  and  $Q$  is shown in [Equation 5](#) and [Equation 6](#).

[Equation 5](#) can be used to calculate band suppression ( $G < 1$ ) functions.

$$\left. \begin{aligned} K_0 &= G \\ K_1 &= -\cos \omega \\ K_2 &= (2Q \cdot G - \sin \omega) / (2Q \cdot G + \sin \omega) \end{aligned} \right|_{G < 1} \quad (5)$$

[Equation 6](#) can be used to calculate band amplification ( $G \geq 1$ ) functions.

$$\left. \begin{aligned} K_0 &= G \\ K_1 &= -\cos \omega \\ K_2 &= (2Q - \sin \omega) / (2Q + \sin \omega) \end{aligned} \right|_{G \geq 1} \quad (6)$$

The ranges of the parametric equalizer settings for each band are:

- The gain,  $G$ , is from  $-30$  dB to  $+12$  dB.
- The center frequency,  $f_c$ , is from  $0.0004 \cdot f_s$  to  $0.49 \cdot f_s$ .
- The quality factor,  $Q$ , is from  $0.001$  to  $8$ .

Filter coefficients need to be entered for each filter stage via the I<sup>2</sup>C-bus interface to configure the filters (see [Section 10.4.3](#)).

[Figure 7](#), [Figure 8](#) and [Figure 9](#) illustrate some possible equalizer band transfer functions. The relationships are symmetrical for the suppression and amplification functions. A skewing effect can be observed at higher frequencies.

For optimum numerical noise performance, different configurations are available for a given filter transfer function. The binary filter configuration parameters  $t_1$  and  $t_2$  control the actual configuration and should be chosen according to [Equation 7](#).

$$\begin{aligned} t_1 &= \begin{cases} 0 & K_I \leq 0 \\ 1 & K_I > 0 \end{cases} \\ t_2 &= \begin{cases} 0 & K_2 \geq 0 \\ 1 & K_2 < 0 \end{cases} \end{aligned} \quad (7)$$

A maximum of 12 dB amplification, with respect to the input signal, can be achieved per equalizer stage. The equalizer band signals are processed in sequence, from the highest (Band A) to the lowest (Band E). Each band can attenuate the signal by 6 dB so, in order to prevent numerical clipping at filter settings of over 6 dB amplification, band filters can be scaled by 0 dB or –6 dB. For optimum numerical noise performance, steps of –6 dB amplification should be applied to the bands in sequence, starting with B and A, as long as they are able to amplify the signal without clipping.

A filter scale factor,  $s$ , is associated with each of the equalizer bands and is set via the relevant EQx\_s control bit (see [Table 25](#)).

**Table 7. Equalizer filter scale factor settings**

s	scale factor (dB)
0	0
1	–6

#### 9.2.5.2 Equalizer band control

For compact representation with positive signed parameters, parameters  $k_1'$  and  $k_2'$  are introduced in [Equation 8](#).

$$\begin{aligned} k_0' &= K_0 \\ k_1' &= \begin{cases} 1 - K_1 & t_1 = 0 \\ 1 + K_1 & t_1 = 1 \end{cases} \\ k_2' &= \begin{cases} 1 - K_2 & t_2 = 0 \\ 1 + K_2 & t_2 = 1 \end{cases} \end{aligned} \quad (8)$$

Parameters  $K_0$ ,  $k_1'$ ,  $k_2'$ ,  $t_1$ ,  $t_2$  and  $s$  must be combined in two 16-bit control words, word1 and word2 (see [Table 24](#) and [Table 25](#)), using the format shown in [Table 8](#). Parameters  $k_1'$  and  $k_2'$  are unsigned floating-point representations in [Equation 8](#).

$$k_x' = M \cdot 2^{-E} \Big|_{M < 1} \quad (9)$$

In [Equation 9](#),  $M$  is the unsigned mantissa and  $E$  the negative signed exponent. For example, in word2 bits [14:8] = [0111 010] represent  $k_2' = (7/2^4) \times 2^{-2} = 1.09375 \times 10^{-1}$ .

Table 8. Equalizer control word construction

Word	Section	Data
word1	15	$t_1$
word1	[14:4]	11 mantissa bits of $k_1'$
word1	[3:0]	four exponent bits of $k_1'$
word2	15	$t_2$
word2	[14:11]	four mantissa bits of $k_2'$
word2	[10:8]	three exponent bits of $k_2'$
word2	[7:1]	$k_0'$
word2	0	s

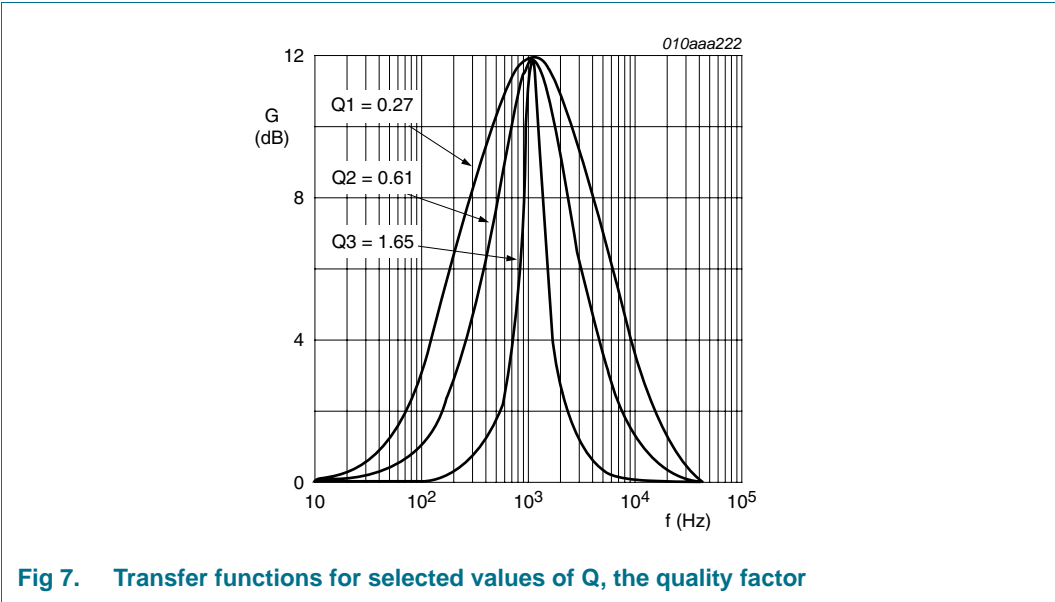


Fig 7. Transfer functions for selected values of  $Q$ , the quality factor

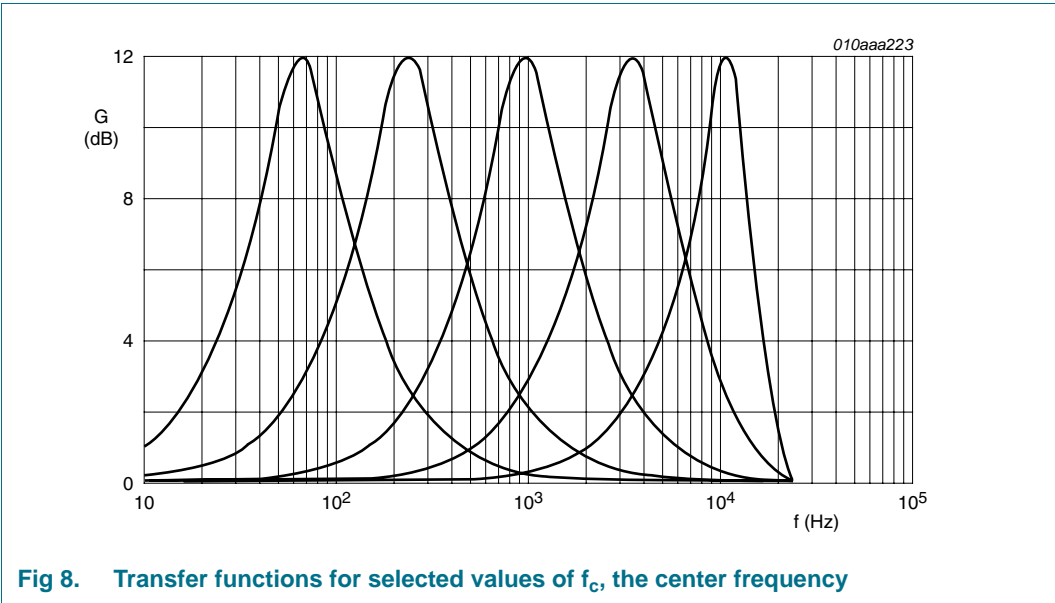


Fig 8. Transfer functions for selected values of  $f_c$ , the center frequency

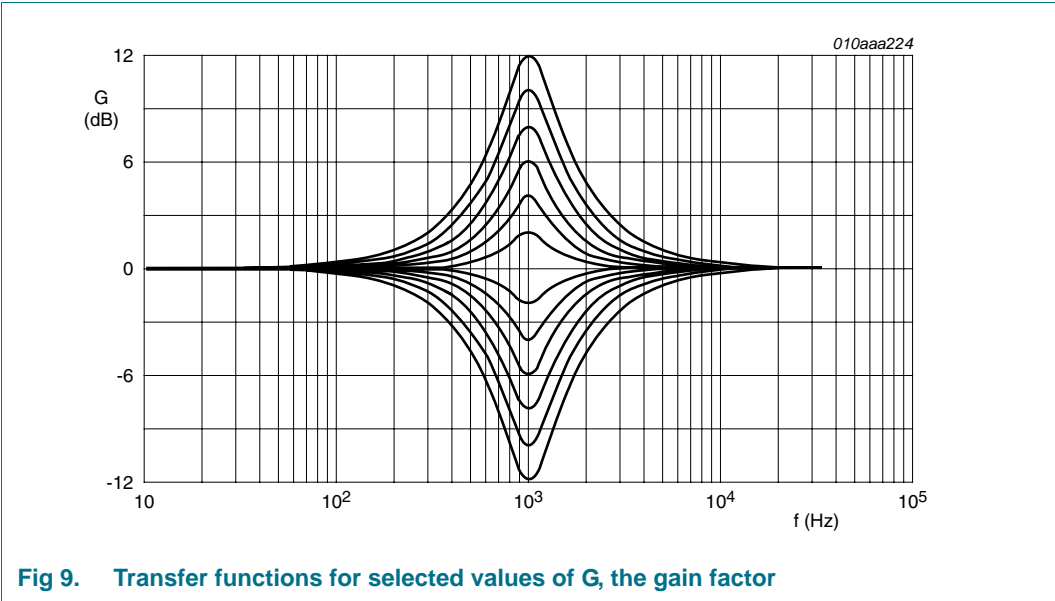




Figure 10 shows the bass function for a range of attenuation and boost settings with a sample rate of 48 kHz and a corner frequency of 272 Hz.

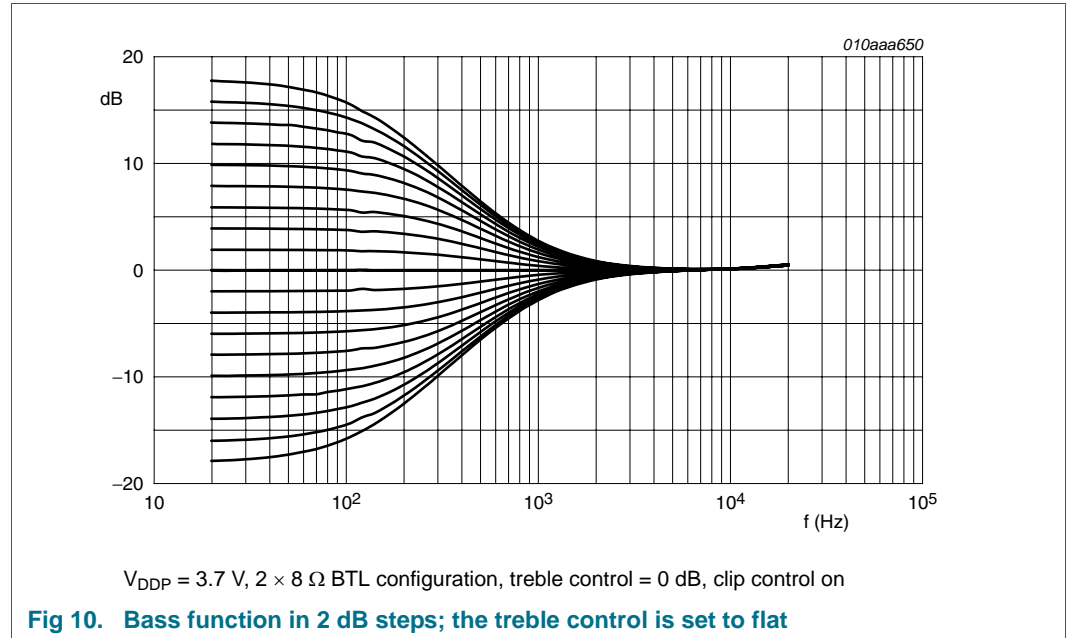
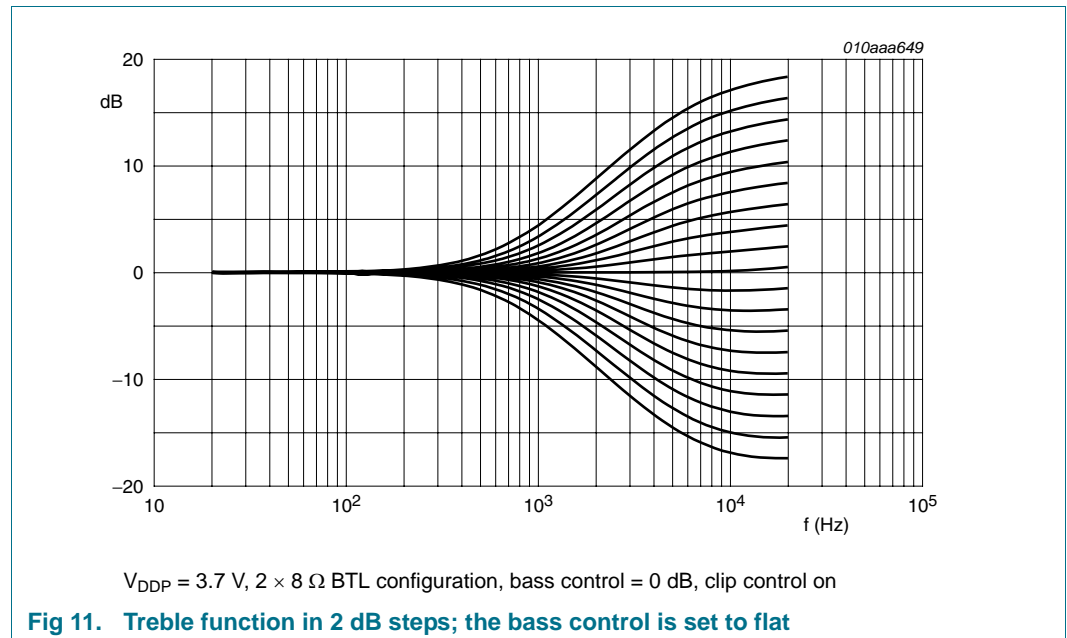


Figure 11 shows the treble function for a range of attenuation and boost settings with a sample rate of 48 kHz and a corner frequency of 1630 Hz.



## 9.2.7 Muting

The TFA9879 support two muting options, which are controlled via the I<sup>2</sup>C-bus interface:

- Soft muting
- Hard muting

Soft muting prevents audible pops. The function smoothly reduces the gain setting of the audio channel to the mute level according to a raised cosine shape. Soft muting is performed in 128 /  $f_s$  steps. Soft de-mute results in a similar gain increase. Bit S\_MUTE in [Table 32](#) enables and disables the soft mute function.

The hard mute function immediately switches the outputs to 50 % duty-cycle pulses. As a result, the input signals are abruptly blocked. Hard mute takes priority over soft mute. Hard mute is enabled and disabled via bit H\_MUTE in [Table 32](#).

9.2.8 Digital volume control

The digital volume control has a range of –70 dB to + 24 dB, programmable in 0.5 dB steps. The default setting is mute (0 × BD). Attenuation and boosting behavior is affected by the zero crossing volume setting (see [Section 9.2.9](#) for further details).

The volume control settings, and the resulting amplification or suppression factors, are detailed in [Table 10](#).

Table 10. Volume control amplification and suppression

Control value <sup>[1]</sup>	Gain (dB)
00h	+24
01h	+23.5
.. ..	steps of 0.5 dB
BBh	–69.5
BCh	–70
BDh <sup>[2]</sup>	mute
.. ..	mute
FFh	mute

[1] Control value is selected via bits VOL in the Volume control register (see [Table 31](#)).  
 [2] Default value.

9.2.9 Zero-crossing volume control

The TFA9879 employs zero-crossing volume control to minimize pop noise when the volume or bass/treble control is changing.

When zero-crossing volume control is enabled (ZR\_CRSS = 1; see [Table 31](#)), the TFA9879 increases or decreases the gain only when the audio signal passes a zero crossing.

9.2.10 Dynamic Range Compressor (DRC)

The TFA9879 provides a DRC to automatically adjust power levels according to programmable attack and release levels. The attack level is related to the peak value of the signal; the release level is related to the RMS value of the signal. The attack level is programmable using 16 available levels in the range –12 dB to +10 dB. The release level is programmable using 16 available levels in the range –29 dB to 0 dB relative to the attack level. The signal level is measured after Equalizer, Bass and Treble processing, but before it reaches the power limiter.

The DRC can be bypassed via bit DRC\_BP in [Table 27](#).

### 9.2.10.1 Functional description

The DRC compresses the dynamic range of the audio stream. The volume control, equalizer or bass/treble controls can be set so that the audio stream exceeds the 0 dBfs clip level. The DRC can be programmed to compress the louder audio content when this occurs, while quieter sounds remain unaffected, i.e. the DRC soft clips the audio stream. This is useful when background noise overpowers quiet audio passages. Increasing the volume using the volume control can make quiet audio passages audible but can cause louder audio passages to be distorted by clipping. The DRC prevents this distortion happening by reducing the volume during loud audio passages and increasing it again for quiet passages.

The design of the DRC feedback loop, incorporating the equalizer and bass and treble controls, is illustrated in [Figure 12](#).

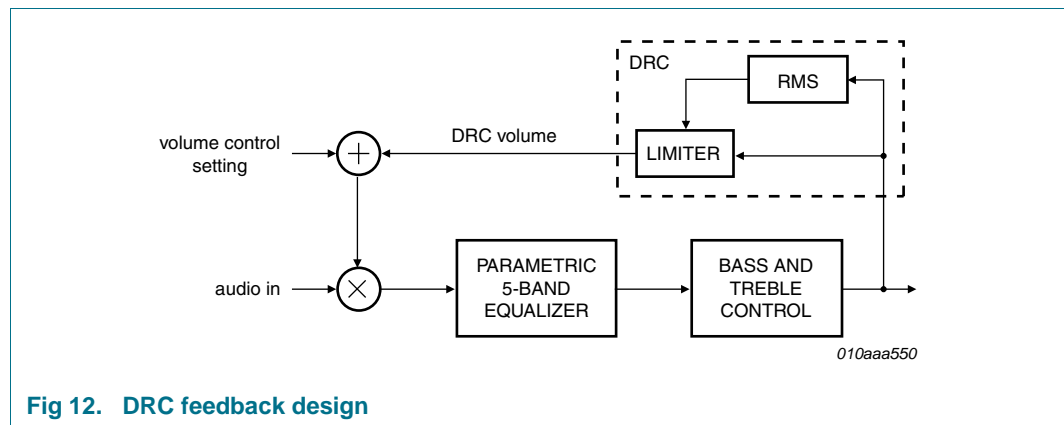


Fig 12. DRC feedback design

### 9.2.10.2 DRC control

The DRC has four programmable control settings:

- Attack level
- Attack rate
- Release level
- Release rate

The DRC reduces the volume when the audio signal level exceeds the attack level. The attack level is based on the audio peak value. When the audio signal level drops below the attack level, the DRC stops reducing the volume. The rate of decrease is programmable via the attack rate. The DRC increases the audio signal level again when it drops below the release level. This level is based on the audio RMS-value and is related to the attack level. The rate of increase is programmable via the release level. The DRC stops increasing the volume when the audio signal level reaches the release level or the DRC volume falls to 0 dB.

[Figure 13](#) shows the attack and release behavior of the DRC.

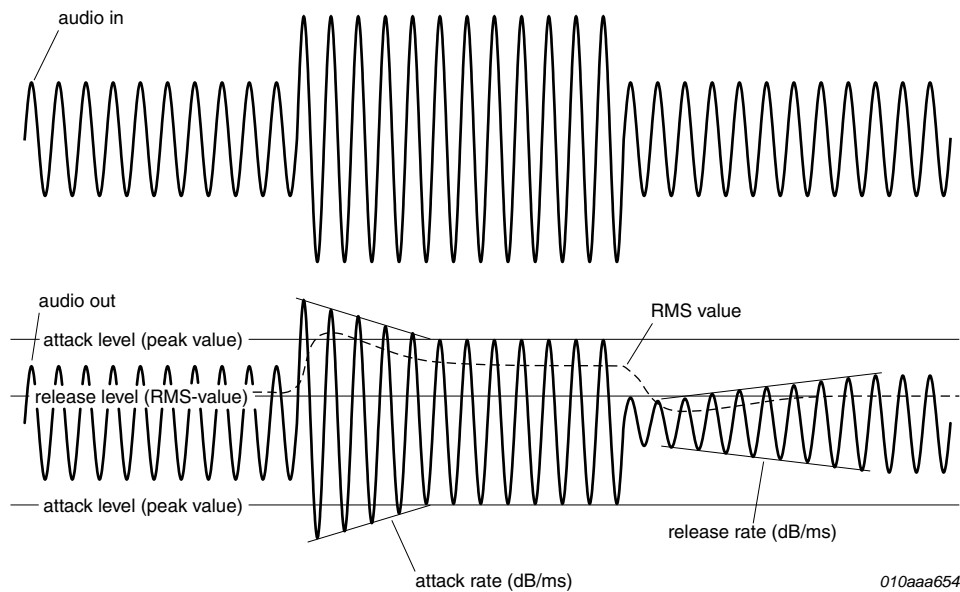


Fig 13. DRC attack and release behavior

Table 11. DRC attack and release levels

Control value: attack level <sup>[1]</sup>	Attack level based on peak value; absolute value (dBFS)	Control value: release level <sup>[2]</sup>	Release level based on RMS value (relative to the attack level <sup>[3]</sup> ) (dB)
0000	-12	0000	-29
0001	-10	0001	-26
0010	-8	0010	-23
0011	-6	0011	-20
0100	-5	0100	-18
0101	-4	0101	-16
0110	-3	0110	-14
0111	-2	0111	-12
1000	-1	1000	-10
1001 <sup>[4]</sup>	0	1001	-8
1010	1	1010	-6
1011	2	1011 <sup>[4]</sup>	-4
1100	4	1100	-3
1101	6	1101	-2
1110	8	1110	-1
1111	10	1111	0

[1] The control value is selected via bits AT\_LVL in the DRC control register (see [Table 28](#)).

[2] The control value is selected via bits RL\_LVL in the DRC control register (see [Table 28](#)).

[3] 0 dB (RMS) release level equals 0 dB (peak) attack level.

[4] Default value.

Table 12. DRC attack and release rates

Control value: attack rate <sup>[1]</sup>	Attack rate (dB/ms)	Control value: release rate <sup>[2]</sup>	Release rate (dB/ms)
0000	3	0000	0.5
0001	2.7	0001	0.137
0010 <sup>[3]</sup>	2.25	0010	0.075
0011	1.8	0011	0.05
0100	1.35	0100	0.036
0101	0.9	0101	0.03
0110	0.45	0110	0.026
0111	0.225	0111	0.021
1000	0.15	1000	0.020
1001	0.11	1001	0.017
1010	0.09	1010 <sup>[3]</sup>	0.015
1011	0.075	1011	0.014
1100	0.065	1100	0.013
1101	0.06	1101	0.012
1110	0.055	1110	0.011
1111	0.05	1111	0.01

[1] The control value is selected via bits AT\_RATE in the DRC control register (see [Table 28](#)).

[2] The control value is selected via bits RL\_RATE in the DRC control register (see [Table 28](#)).

[3] Default value.

### 9.2.11 Power limiter

The power limiter controls the maximum output voltage in Amplifier mode. This feature makes it possible to limit the output voltage across a peripheral (speaker) when necessary.

The TFA9879 output voltage is dependent on:

- The analog supply voltage on pin  $V_{DDP}$
- The gain of the power limiter (G)
- The power limiter input signal ( $X_i$ )

The bass/treble output signal is connected to the power limiter input and is relative to the Fraction of Full Scale (FFS), from  $-1$  to  $+1$ .

[Equation 10](#) shows the relationship between these settings and the output voltage between pins OUTA and OUTB in the audio bandwidth:

$$V_o = \begin{cases} X_i \times G \times 5.9I & X_i \times G \times 5.9I < V_{DDP} \\ V_{DDP} & X_i \times G \times 5.9I \geq V_{DDP} \end{cases} \quad (V) \quad (10)$$

[Equation 10](#) only applies with no load and with clip control off (see [Section 9.3](#)). Clip control and the  $R_{DSon}$  of the power switches reduce the maximum clipped output signal. The power limiter gain can be reduced in 249 steps of 0.5 dB in the range 0 dB to  $-124$  dB.

The maximum peak output voltage for the first ten power limiter gain settings is given in [Table 13](#).

**Table 13. Power limiter control settings**

All parameters are guaranteed for  $V_{DDP} = 5\text{ V}$ ; no load;  $f_i = 1\text{ kHz}$ ;  $f_s = 48\text{ kHz}$ ; clip control off;  $T_{amb} = 25\text{ °C}$  unless otherwise specified.

Control value <sup>[1]</sup>	Power limiter gain (dB)	Maximum peak output voltage (V)
00h <sup>[2]</sup>	0.0	$V_{DDP}$
01h	−0.5	$V_{DDP}$
02h	−1.0	$V_{DDP}$
03h	−1.5	$V_{DDP}$
04h	−2.0	4.7
05h	−2.5	4.4
06h	−3.0	4.2
07h	−3.5	4.0
08h	−4.0	3.7
09h	−4.5	3.5

[1] The control value is selected via bits P\_LIM in the De-emphasis, soft/hard mute and power limiter control register (see [Table 32](#)).

[2] Default value.

### 9.3 Class-D amplification and clip control

A fourth order sigma delta PWM converter converts the digital audio streams into 3-level modulated PWM signals. The analog back end amplifies the two PWM signals in a BTL configuration with complementary output stages.

One of two clip control configurations can be selected:

- Smooth clipping, clip control on
- Maximum power, clip control off

If smooth clipping is selected (CLIPCTRL = 0; see [Table 27](#)), the clipping behavior will have no artefacts. To obtain the maximum possible output power, the device can be set to maximum power.

The PWM frequency is related to the I<sup>2</sup>S input sample rate as detailed in [Table 4](#).

**Table 14. Power limiter control settings**

PWM frequency (kHz)	Sample rate (kHz)	SCK relative to sample rate
256	8, 16, 32, 64	32 ×, 64 ×
352.8	11.025, 22.05, 44.1, 88.2	32 ×, 64 ×
384	12, 24, 48, 96	32 ×, 64 ×

### 9.4 Protection

The TFA9879 incorporates a wide range of protection circuits to facilitate optimal and safe application.

The following protection circuits are included in the TFA9879:

- OverTemperature Protection (OTP)
- OverCurrent Protection (OCP)
- UnderFrequency Protection (UFP)
- OverFrequency Protection (OFP)
- Invalid Bit-clock Protection (IBP)
- DC-blocking via high-pass filter (see [Section 9.2.3](#))

The reaction of the device to fault conditions differs depending on the protection circuit involved.

#### 9.4.1 OverTemperature Protection (OTP)

This is a 'hard' protection to prevent heat damage to the TFA9879. Overtemperature protection is triggered when the junction temperature exceeds 130 °C. When this happens, the output stages are set floating. OTP can be cleared automatically via a programmable timer or via the I<sup>2</sup>C-bus interface, after which the output stages will start to operate normally again. The programmable timer settings, selected via bits L\_OTP in the Bypass control register ([Table 27](#)), are:

- 4.5 µs
- 100 ms
- 1 s

OTP can also be set to no recovery. Setting the TFA9879 to Off mode and subsequently to Amplifier mode clears the OTP when no recovery is selected.

#### 9.4.2 OverCurrent Protection (OCP)

The output current of the class-D amplifiers is current limited. When an output stage exceeds a current in the range 1.3 A to 2.3 A, the output stages are set floating. OCP can be cleared automatically via a programmable timer or via the I<sup>2</sup>C-bus interface, after which the output stages will start to operate normally again. The programmable timer settings, selected via bits L\_OCP in the Bypass control register ([Table 27](#)), are:

- 4.5 µs
- 27.5 µs
- 10 ms

The OCP can also be set to no recovery. Setting the TFA9879 to Off mode and subsequently to Amplifier mode clears the OCP when no recovery is selected.

#### 9.4.3 UnderFrequency Protection (UFP)

UFP sets the output stages floating when the clock input source is too low ( $< f_{UFP}$ ). This can happen if, for example, the selected sample frequency (bits I2S\_FS in [Table 22](#)) is not in line with the applied sample rate. The PWM switching frequency can become critically low when the frequency of the input clock is lower than the selected sample frequency. Without UFP, peripheral devices in an application might be damaged.

The UFP status can be monitored by polling the I<sup>2</sup>C status register ([Table 33](#)). The alarm will be raised when the input sample rate is too low.

#### 9.4.4 OverFrequency Protection (OFP)

OFP sets the output stages floating when the clock input source is too high ( $>f_{OFP}$ ). This can happen if, for example, the selected sample frequency (bits I2S\_FS in [Table 22](#)) is not in line with the applied sample rate. The PWM controller can become unstable when the frequency of the input clock is higher than the selected sample frequency. Without OFP, peripheral devices in an application might be damaged.

The OFP status can be monitored by polling the I<sup>2</sup>C status register ([Table 33](#)). The alarm will be raised when the input sample rate is too high.

#### 9.4.5 Invalid Bit-clock Protection (IBP)

If the SCK-to-LRCK ratio is not supported, the audio signal will be distorted. This occurs because the sound processing blocks will be operating at frequencies out of synchronization with the sample rate.

IBP prevents this happening by shutting down the TFA9879 if the IBP alarm is raised for the selected channel. This will disconnect the digital audio path.

Valid SCK-to-LRCK ratios for PCM interface formats are 16, 32, 48, 64, 96, 128 and 192. For I<sup>2</sup>S interface formats, valid SCK-to-LRCK ratios are 32 and 64.

#### 9.4.6 Overview of protection circuits

[Table 15](#) provides an overview of the protection circuits implemented.

Table 15. Overview of protection circuits

Protection circuits				
Symbol	Conditions	I <sup>2</sup> C flag	Output	Recovery
OTP	$T_j > 130\text{ °C}$	OTP	floating	automatic when timer set to 4.5 $\mu$ s, 100 ms or 1 s (via bits L_OTP in <a href="#">Table 27</a> ) and $T_j < 130\text{ °C}$ ; via I <sup>2</sup> C-bus when no recovery is selected
OCP	$I_O > I_{O(ocp)}$	OCP	floating	automatic when timer set to 4.5 $\mu$ s, 27.5 $\mu$ s or 10 $\mu$ s (via bits L_OCP in <a href="#">Table 27</a> ) and $I_O < I_{O(ocp)}$ ; via I <sup>2</sup> C-bus when no recovery is selected
UFP	PWM frequency < 96 kHz	UFP	floating	restart (fault to operating when PWM frequency > 96 kHz)
OFP	PWM frequency > 1031 kHz	OFP	floating	restart (fault to operating when PWM frequency < 1031 kHz)
IBP	SCK/WS is not $16 \pm 1$ , $32 \pm 1$ , $48 \pm 1$ , $64 \pm 1$ or $128 \pm 1$	IBP	floating	restart (fault to operating when SCK/WS is $16 \pm 1$ , $32 \pm 1$ , $48 \pm 1$ , $64 \pm 1$ or $128 \pm 1$ )

## 10. I<sup>2</sup>C-bus interface and register settings

### 10.1 I<sup>2</sup>C-bus interface

The TFA9879 supports the 400 kHz I<sup>2</sup>C-bus microcontroller interface mode standard. The I<sup>2</sup>C-bus is used to control the TFA9879 and to transmit and receive data.

The TFA9879 can operate only in I<sup>2</sup>C slave mode, as a slave receiver or as a slave transmitter.



The TFA9879 is accessed via an 8-bit code (see [Table 16](#)). Bits 1 to 7 contain the device address. Bit 0 (R/W) indicates whether a read (1) or a write (0) operation has been requested. Four separate addresses are supported for multichannel applications. Applying the appropriate voltage to pins ADSEL1 (A1) and ADSEL2 (A2) select the required I<sup>2</sup>C address as detailed in [Table 16](#).

**Table 16. I<sup>2</sup>C-bus device address**

Bit 7 (MSB)	Bit 6	Bit 5	Bit 4	Bit 3	Bit 2	Bit 1	Bit 0 (LSB)
1	1	0	1	1	A2	A1	R/W

**Table 17. I<sup>2</sup>C pin voltages in I<sup>2</sup>C control mode**

Logic value	Voltage on pins ADSEL1 and ADSEL2
0	< V <sub>IL</sub>
1	> V <sub>IH</sub>

## 10.2 I<sup>2</sup>C-bus write cycle

The sequence of events that needs to be followed when writing data to the TFA9879's I<sup>2</sup>C-bus registers is detailed in [Table 18](#). One byte is transmitted at a time. Each register stores two bytes of data. Data is always written in byte pairs. Data transfer is always MSB first.

The write cycle sequence using SDA is as follows:

1. The microcontroller asserts a start condition (S).
2. The microcontroller transmits the 7-bit device address of the TFA9879, followed by the R/W bit set to 0.
3. The TFA9879 asserts an acknowledge (A).
4. The microcontroller transmits the 8-bit TFA9879 register address to which the first data byte will be written.
5. The TFA9879 asserts an acknowledge.
6. The microcontroller transmits the first byte (the most significant byte).
7. The TFA9879 asserts an acknowledge.
8. The microcontroller transmits the second byte (the least significant byte).
9. The TFA9879 asserts an acknowledge.
10. The microcontroller can either assert the stop condition (P) or continue transmitting data by sending another pair of data bytes, repeating the sequence from step 6. In the latter case, the targeted register address will have been auto-incremented by the TFA9879.

**Table 18. I<sup>2</sup>C-bus write cycle**

Start	TFA9879 Address	R/W		TFA9879 first register address	MSB		LSB		More data...	Stop
S	11011A <sub>2</sub> A <sub>1</sub>	0	A	ADDR	A	MS1	A	LS1	A	<....> P

### 10.3 I<sup>2</sup>C-bus read cycle

The sequence of events that needs to be followed when reading data from the TFA9879's I<sup>2</sup>C-bus registers is detailed in [Table 19](#). One byte is transmitted at a time. Each of the registers stores two bytes of data. Data is always written in byte pairs. Data transfer is always MSB first.

The read cycle sequence using SDA is as follows:

1. The microcontroller asserts a start condition (S).
2. The microcontroller transmits the 7-bit device address of the TFA9879, followed by the  $\overline{R/\overline{W}}$  bit set to 0.
3. The TFA9879 asserts an acknowledge (A).
4. The microcontroller transmits the 8-bit TFA9879 register address from which the first data byte will be read.
5. The TFA9879 asserts an acknowledge.
6. The microcontroller asserts a repeated start (Sr).
7. The microcontroller re-transmits the device address followed by the  $\overline{R/\overline{W}}$  bit set to 1.
8. The TFA9879 asserts an acknowledge.
9. The TFA9879 transmits the first byte (the MSB).
10. The microcontroller asserts an acknowledge.
11. The TFA9879 transmits the second byte (the LSB).
12. The microcontroller asserts either an acknowledge or a negative acknowledge (NA).
  - If the microcontroller asserts an acknowledge, the target register address is auto-increased by the TFA9879 and steps 9 to 12 are repeated.
  - If the microcontroller asserts a negative acknowledge, the TFA9879 frees the I<sup>2</sup>C-bus and the microcontroller generates a stop condition (P).

**Table 19. I<sup>2</sup>C-bus read cycle**

Start	TFA9879 address	$\overline{R/\overline{W}}$	First register address	TFA9879 address	$\overline{R/\overline{W}}$	MSB	LSB	More data...	Stop
S	11011A <sub>2</sub> A <sub>1</sub>	0	A ADDR A	Sr 11011A <sub>2</sub> A <sub>1</sub>	1	A MS1 A	LS1 A	<....>	NA P

### 10.4 Top-level register map

[Table 20](#) describes the top-level assignment of register addresses to the functional control and status areas. There are 21 control registers and 1 status register.

**Table 20. Top-level register map**

Register address (hex)	Default (hex)	Access	Description
00h	0x0000	R/W	device control; see <a href="#">Table 21</a>
01h	0x0A18	R/W	serial Interface input 1; see <a href="#">Table 22</a>
02h	0x0007	R/W	PCM/IOM2 format input 1; see <a href="#">Table 23</a>
03h	0x0A18	R/W	serial Interface input 2; see <a href="#">Table 22</a>
04h	0x0007	R/W	PCM/IOM2 format input 2; see <a href="#">Table 23</a>
05h	0x59DD	R/W	equalizer_A word_1; see <a href="#">Table 24</a>

Table 20. Top-level register map ...continued

Register address (hex)	Default (hex)	Access	Description
06h	0xC63E	R/W	equalizer_A word_2; see <a href="#">Table 25</a>
07h	0x651A	R/W	equalizer_B word_1; see <a href="#">Table 24</a>
08h	0xE53E	R/W	equalizer_B word_2; see <a href="#">Table 25</a>
09h	0x4616	R/W	equalizer_C word_1; see <a href="#">Table 24</a>
0Ah	0xD33E	R/W	equalizer_C word_2; see <a href="#">Table 25</a>
0Bh	0x4DF3	R/W	equalizer_D word_1; see <a href="#">Table 24</a>
0Ch	0xEA3E	R/W	equalizer_D word_2; see <a href="#">Table 25</a>
0Dh	0x5EE0	R/W	equalizer_E word_1; see <a href="#">Table 24</a>
0Eh	0xF93E	R/W	equalizer_E word_2; see <a href="#">Table 25</a>
0Fh	0x0093	R/W	bypass control; see <a href="#">Table 27</a>
10h	0x92BA	R/W	dynamic range compressor; see <a href="#">Table 28</a>
11h	0x12A5	R/W	bass and treble; see <a href="#">Table 29</a>
12h	0x0004	R/W	high-pass filter; see <a href="#">Table 30</a>
13h	0x10BD	R/W	volume control; see <a href="#">Table 31</a>
14h	0x0000	R/W	de-emphasis, soft/hard mute and power limiter; see <a href="#">Table 32</a>
15h	-	R	miscellaneous status; see <a href="#">Table 33</a>

The following subsections provide details of the of the bits in these registers and the control and status functionality assigned to each.

#### 10.4.1 Device control

Table 21. Device control register (address 00h) bit description

Bit	Symbol	Access	Default	Description
15:5	reserved		0x000	
4	INPUT_SEL	R/W	0	serial interface input selection: 0: serial interface input 1 1: serial interface input 2
3	OPMODE	R/W	0	operating mode selection: 0: Off mode 1: Amplifier mode
2	reserved		0	
1	RESET	R/W	0	I <sup>2</sup> C reset activation: 0: reset inactive 1: reset active; 1 is written to generate a reset, after which the RESET bit is automatically reset to 0
0	POWERUP	R/W	0	Power-down mode selection: 0: Power-down mode 1: operating mode (dependent on OPMODE)

## 10.4.2 Serial interface control

Table 22. Serial interface control registers (addresses 01h and 03h<sup>[1]</sup>) bit description

Bit	Symbol	Access	Default	Description
15:12	reserved		0000	
11:10	MONO_SEL	R/W	10	mono selection: 00: left channel; left channel content is amplified in Amplifier mode 01: right channel; right channel content is amplified in Amplifier mode 10: left + right channels; sum of left and right channels, divided by two, is amplified in Amplifier mode 11: reserved
9:6	I2S_FS	R/W	1000	sample frequency ( $f_s$ ) of digital-in signal: 0000: 8 kHz 0001: 11.025 kHz 0010: 12 kHz 0011: 16 kHz 0100: 22.05 kHz 0101: 24 kHz 0110: 32 kHz 0111: 44.1 kHz 1000: 48 kHz 1001: 64 kHz 1010: 88.2 kHz 1011: 96 kHz 1100 to 1111: reserved
5:3	I2S_SET	R/W	011	I <sup>2</sup> S format selection: 000: reserved 001: reserved 010: MSB-justified data up to 24 bits 011: I <sup>2</sup> S data up to 24 bits 100: LSB-justified 16-bit data 101: LSB-justified 18-bit data 110: LSB-justified 20-bit data 111: LSB-justified 24-bit data
2	SCK_POL	R/W	0	enable SCK signal polarity inversion: 0: no SCK signal polarity inversion 1: SCK signal polarity inversion enabled

Table 22. Serial interface control registers (addresses 01h and 03h<sup>[1]</sup>) bit description

Bit	Symbol	Access	Default	Description
1:0	I_MODE	R/W	00	input audio mode selection: 00: I <sup>2</sup> S mode 01: PCM/IOM2 Short Frame Sync Format 10: PCM/IOM2 Long Frame Sync Format 11: reserved

[1] Serial interface 1 settings are controlled via register 01h; serial interface 2 settings are controlled via register 03h.

Table 23. PCM/IOM2 format control registers (addresses 02h and 04h<sup>[1]</sup>) bit description

Bit	Symbol	Access	Default	Description
15:12	reserved		0000	
11	PCM_FS	R/W	0	PCM sample frequency: 0: 8 kHz 1: 16 kHz
10	A_LAW	R/W	0	U-LAW/A-LAW decoding selection (depending on PCM_COMP): 0: U-law decoding; default value 1: A-law decoding
9	PCM_COMP	R/W	0	companded PCM data: 0: linear 1: companded (U/A-law)
8	PCM_DL	R/W	0	PCM data length (number of bits per slot): 0: 8-bit; default value 1: 16-bit
7:4	D1_SLOT	R/W	0000	slot number position of the first sample (at 8 kHz and 16 kHz): 0000: slot 0 0001: slot 1 ... 1111: slot 15
3:0	D2_SLOT	R/W	0111	slot number position of the second sample (16 kHz): 0000: slot 0 0001: slot 1 ... 0111: slot 7 ... 1111: slot 15

[1] PCM/IOM2 format settings of serial interface 1 are controlled via register 02h; PCM/IOM2 format settings of serial interface 2 are controlled via register 04h.

### 10.4.3 Equalizer configuration

**Table 24. Equalizer word1 control registers (addresses 05h, 07h, 09h, 0Bh and 0Dh for equalizer bands A, B, C, D and E respectively) bit description**

'x' represents the equalizer band A, B, C, D or E

Bit	Symbol	Access	Default <sup>[1]</sup>	Description
15	EQx_t1	R/W		filter configuration parameter t <sub>1</sub> ; see section <a href="#">Section 9.2.5.1</a>
14:4	EQx_k1m	R/W		11 mantissa bits of filter parameter k <sub>1</sub> '; see <a href="#">Section 9.2.5.1</a>
3:0	EQx_k1e	R/W		four exponent bits of filter parameter k <sub>1</sub> '; see <a href="#">Section 9.2.5.1</a>

[1] Default settings are given in [Table 20](#). The corresponding equalizer configuration is shown in [Table 26](#).

**Table 25. Equalizer word2 control register (addresses 06h, 08h, 0Ah, 0Ch and 0Eh for equalizer bands A, B, C, D and E respectively) bit description**

'x' represents the equalizer band A, B, C, D or E

Bit	Symbol	Access	Default <sup>[1]</sup>	Description
15	EQx_t2	R/W		filter configuration parameter t <sub>2</sub> ; see section <a href="#">Section 9.2.5.1</a>
14:11	EQx_k2m	R/W		four mantissa bits of filter parameter k <sub>2</sub> '; see <a href="#">Section 9.2.5.1</a>
10:8	EQx_k2e	R/W		three exponent bits of filter parameter k <sub>2</sub> '; see <a href="#">Section 9.2.5.1</a>
7:1	EQx_K0	R/W		seven-bit of filter gain parameter K <sub>0</sub> ; see <a href="#">Section 9.2.5.1</a>
0	EQx_s	R/W		filter scale-factor (s); see <a href="#">Section 9.2.5.1</a> 0: no scaling applied 1: -6 dB amplification enabled

[1] Default settings are given in [Table 20](#). The corresponding equalizer configuration is shown in [Table 26](#).

**Table 26. Default equalizer configuration for f<sub>s</sub> = 48 kHz**

Band	A	B	C	D	E
Frequency (Hz)	100	300	1000	3000	10000
Q-factor	1.65	1.65	1.65	1.65	1.65
Gain (dB)	0	0	0	0	0

#### 10.4.4 Bypass control

Table 27. Bypass control register (addresses 0Fh) bit description

Bit	Symbol	Access	Default	Description
15:8	reserved		0x00	
7:6	L_OCP	R/W	10	overcurrent protection timer setting: 00: 4.5 $\mu$ s floating when an overcurrent is detected 01: 27.5 $\mu$ s floating when an overcurrent is detected 10: 10 ms floating when an overcurrent is detected 11: no recovery (stays floating) when an overcurrent is detected
5:4	L_OTP	R/W	01	overtemperature protection timer setting: 00: 4.5 $\mu$ s floating when an overtemperature is detected 01: 100 ms floating when an overtemperature is detected 10: 1 s floating when an overtemperature is detected 11: no recovery (stays floating) when an overtemperature is detected
3	CLIPCTRL	R/W	0	clip control bypass setting, see <a href="#">Section 9.3</a> : 0: clip control on (smooth clipping) 1: clip control off (maximum power)
2	HPF_BP	R/W	0	high-pass filter bypass setting: 0: high-pass filter active 1: high-pass filter bypassed
1	DRC_BP	R/W	1	dynamic range compressor bypass setting: 0: dynamic range compression active 1: dynamic range compression bypassed
0	EQ_BP	R/W	1	equalizer bypass setting: 0: equalizer active 1: equalizer bypassed

#### 10.4.5 Dynamic range compressor

Table 28. DRC control register (addresses 10h) bit description

Bit	Symbol	Access	Default	Description
15:12	AT_LVL	R/W	1001	dynamic range compressor attack level; see <a href="#">Table 11</a> for the attack level as a function of the value of AT_LTV.
11:8	AT_RATE	R/W	0010	dynamic range compressor attack rate; see <a href="#">Table 12</a> for the attack rate as a function of the value of AT_RATE
37:4	RL_LVL	R/W	1011	dynamic range compressor release level; see <a href="#">Table 11</a> for the release level as a function of the value of RL_LTV.
3:0	RL_RATE	R/W	1010	dynamic range compressor release rate; see <a href="#">Table 12</a> for the release rate as a function of the value of RL_RATE

## 10.4.6 Bass and treble control

Table 29. Bass and treble control register (addresses 11h) bit description

Bit	Symbol	Access	Default	Description
15:14	reserved			
13:9	G_TRBLE	R/W	01001	treble gain (2 dB steps): 00000: –18 dB 00001: –16 dB .. .. 01001: 0 dB .. .. 10001: +16 dB 10010: +18 dB 10011 to 11111: reserved
8:7	F_TRBLE	R/W	01	treble control corner frequency, see <a href="#">Table 9</a> for the corner frequency as a function of the value of F_TRBLE
6:2	G_BASS	R/W	01001	bass gain (2 dB steps): –18 dB –16 dB .. .. 01001: 0 dB .. .. +16 dB +16 dB reserved
1:0	F_BASS	R/W	01	bass control corner frequency, see <a href="#">Table 9</a> for the corner frequency as a function of the value of F_BASS

## 10.4.7 High-pass filter

Table 30. High-pass filter control register (addresses 12h) bit description

Bit	Symbol	Access	Default	Description
15:9	reserved			
8:0	HP_CTRL	R/W	0x04 <sup>[1]</sup>	high-pass filter control, see <a href="#">Section 9.2.3</a> for a discussion of the high pass corner frequency as a function of the value of HP_CTRL

[1] Default value is 04h. From [Equation 1](#), this gives a high-pass cut-off frequency of approximately  $1.6 \times f_s$ .



#### 10.4.8 Volume control

Table 31. Volume control register (address 13h) bit description

Bit	Symbol	Access	Default	Description
15:13	reserved		000	
12	ZR_CRSS	R/W	1	volume update at zero crossing audio stream: 0: zero-crossing volume control disabled 1: zero-crossing volume control enabled; default value
11:8	reserved	R/W	0000	
7:0	VOL	R/W	0xBD	volume control; see <a href="#">Table 10</a> for the amplification and suppression factors as a function of the value of bits VOL

#### 10.4.9 De-emphasis, soft/hard mute and power limiter

Table 32. De-emphasis, soft/hard mute and power limiter control register (address 14h) bit description

Bit	Symbol	Access	Default	Description
15:12	reserved		0000	
11:10	DE_PHAS	R/W	00	de-emphasis settings, see <a href="#">Table 6</a> for the de-emphasis configuration for four sample rates as a function of the value of DE_PHASE
9	H_MUTE	R/W	0	hard mute: 0: no hard mute; default value 1: hard mute enabled; implemented by PWM signal with 50% duty-cycle
8	S_MUTE	R/W	0	soft mute; default value: 0: soft mute disabled using raised cosine 1: soft mute enabled using raised cosine
7:0	P_LIM	R/W	0xBD	power limiter control settings; see <a href="#">Table 13</a> for suppressions factors as a function of the value of P_LIM

#### 10.4.10 Miscellaneous status

Table 33. Miscellaneous status register (address 15h) bit description

Bit	Symbol	Access	Description
15	reserved		
14	PS	R	power stage status: 0: class-D audio amplifier power stage floating 1: class-D audio amplifier power stage switching; PWM signals on pins OUTA and OUTB
13	PORA	R	analog 1V8 regulator status: 0: 1V8 analog regulator is off or output voltage level is too low 1: 1V8 analog regulator output is available and correct
12:11	reserved		
10:9	AMP	R	Amplifier mode status: 00: amplifier is off 01: startup 10: startup 11: amplifier is functional
8	IBP(2)	R	invalid bit clock protection on serial interface input 2: 0: the ratio in frequency between the signal on pin SCK2 and the signal on pin LRCK2 is valid for the selected interface format 1: the ratio in frequency between the signal on pin SCK2 and the signal on pin LRCK2 is invalid for the selected interface format
7	OFP(2)	R	overfrequency protection on serial interface input 2: 0: the frequency of the signal on pin LRCK2 is in line with (or lower than) the selected interface format 1: the frequency of the signal on pin LRCK2 is higher than the selected interface format
6	UFP(2)	R	underfrequency protection on serial interface input 2: 0: the frequency of the signal on pin LRCK2 is in line with (or higher than) the selected interface format 1: the frequency of the signal on pin LRCK2 is lower than the selected interface format
5	IBP(1)	R	invalid bit clock protection on serial interface input 1: 0: the ratio in frequency between the signal on pin SCK1 and the signal on pin LRCK1 is valid for the selected interface format 1: the ratio in frequency between the signal on pin SCK1 and the signal on pin LRCK1 is invalid for the selected interface format
4	OFP(1)	R	overfrequency protection on serial interface input 1: 0: the frequency of the signal on pin LRCK1 is in line with (or lower than) the selected interface format 1: the frequency of the signal on pin LRCK1 is higher than the selected interface format

**Table 33. Miscellaneous status register (address 15h) bit description ...continued**

Bit	Symbol	Access	Description
3	UFP(1)	R	underfrequency protection on serial interface input 1: 0: the frequency of the signal on pin LRCK1 is in line with (or higher than) the selected interface format 1: the frequency of the signal on pin LRCK1 is lower than the selected interface format
2	OCPOKA	R	overcurrent protection on pin OUTA: 0: overcurrent protection on pin OUTA active 1: overcurrent protection on pin OUTA inactive
1	OCPOKB	R	overcurrent protection on pin OUTB: 0: overcurrent protection on pin OUTB active 1: overcurrent protection on pin OUTB inactive
1	OTPOK	R	overtemperature protection: 0: overtemperature protection active 1: overtemperature protection inactive

11. Internal circuitry

Table 34. Internal circuitry

Pin	Symbol	Equivalent circuit
1	SDA	<p>010aaa632</p>
2	SCL	
3	TEST1	
4	ADSEL2	
5	TEST3	
16	ADSEL1	
17	SDI2	
18	SCK2	
19	LRCK2	
20	SDI1	
21	SCK1	
22	LRCK2	
7,8	V <sub>DDP</sub>	<p>010aaa634</p>

Table 34. Internal circuitry

Pin	Symbol	Equivalent circuit
9	OUTB	<p>010aaa635</p>
10	OUTA	
13	STABA	<p>010aaa636</p>
15	TEST2	<p>010aaa637</p>

## 12. Limiting values

Table 35. Limiting values

In accordance with the Absolute Maximum Rating System (IEC 60134).

Symbol	Parameter	Conditions	Min	Max	Unit
$V_{DDA}$	analog supply voltage	on pin $V_{DDP}$	-0.3	+5.5	V
$V_{DDD}$	digital supply voltage	on pin $V_{DDD}$	-0.3	+1.95	V
$T_j$	junction temperature		-	+150	°C
$T_{stg}$	storage temperature		-55	+150	°C
$T_{amb}$	ambient temperature		-20	+85	°C
$V_x$	voltage on pin x	pins LRCKx, SCKx, SDIx, SDA, SCL, ADSEL1, ADSEL2, TEST1 and TEST3	-0.3	+3.6	V
		pin TEST2	-0.3	$V_{DDP} + 0.3$	V
		pins OUTA and OUTB	-0.6	$V_{DDP} + 0.6$	V
		pin STABA	-0.3	+1.95	V
$V_{ESD}$	electrostatic discharge voltage	according to Human Body Model (HBM)	-2	+2	kV
		according to Charge Device Model (CDM)	-500	+500	V

13. Thermal characteristics

Table 36. Thermal characteristics

Symbol	Parameter	Conditions	Typ	Unit
R <sub>th(j-a)</sub>	thermal resistance from junction to ambient	in free air with natural convection		
		JEDEC test board	[1] 49	K/W
		2-layer application board	67	K/W
Ψ <sub>j-lead</sub>	thermal characterization parameter from junction to lead		23	K/W
Ψ <sub>j-top</sub>	thermal characterization parameter from junction to top of package		[2] 6	K/W
R <sub>th(j-c)</sub>	thermal resistance from junction to case	in free air with natural convection	5	K/W

[1] Measured on a JEDEC high K-factor test board (standard EIA/JESD 51-7).

[2] Value depends on where measurement is taken on package.

## 14. Characteristics

### 14.1 DC Characteristics

**Table 37. DC characteristics**

All parameters are guaranteed for  $V_{DDDD} = 1.8\text{ V}$ ;  $V_{DDP} = 3.7\text{ V}$ ;  $R_L = 8\ \Omega$ ;  $L_L = 44\ \mu\text{H}$ ;  $f_i = 1\text{ kHz}$ ;  $f_s = 48\text{ kHz}$ ; clip control off;  $T_{amb} = 25\text{ }^\circ\text{C}$  unless otherwise specified.

Symbol	Parameter	Conditions	Min	Typ	Max	Unit
$V_{DDP}$	power supply voltage	on pin $V_{DDP}$	2.5	-	5.5	V
$V_{DDDD}$	digital supply voltage	on pin $V_{DDDD}$	1.65	1.8	1.95	V
$I_P$	supply current	on pin $V_{DDP}$ ; Amplifier mode with load; soft mute on	-	5.7	-	mA
		on pin $V_{DDP}$ ; Power-down mode	-	-	20	$\mu\text{A}$
$I_{DDD}$	digital supply current	on pin $V_{DDDD}$ ; Amplifier mode	-	1.2	-	mA
		on pin $V_{DDDD}$ ; Power-down mode <a href="#">[1]</a>	-	5	15	$\mu\text{A}$
<b>Series resistance output power switches</b>						
$R_{DSon}$	drain-source on-state resistance	lower switch (NMOS)	-	190	-	$\text{m}\Omega$
		upper switch (PMOS)	-	260	-	$\text{m}\Omega$
<b>Amplifier output pins; OUTA and OUTB</b>						
$V_{O(\text{offset})}$	output offset voltage		-15	0	+15	mV
<b>Regulator, pin STABA</b>						
$V_{O(\text{reg})}$	regulator output voltage	STABA to GNDDP	1.65	-	1.95	V
<b>LRCK1, SCK1, SDI1, LRCK2, SCK2, SDI2, SDA, SCL, ADSEL1 and ADSEL2</b>						
$V_{IH}$	HIGH-level input voltage		$0.7V_{DDDD}$	-	-	V
$V_{IL}$	LOW-level input voltage		-	-	$0.3V_{DDDD}$	V
$C_i$	input capacitance		-	-	3	pF
$V_{OL}$	LOW-level output voltage	at $I_{OL} = 2.6\text{ mA}$	-	-	400	mV
<b>Protection</b>						
$T_{act(th\_prot)}$	thermal protection activation temperature		130	-	-	$^\circ\text{C}$
$I_{O(ocp)}$	overcurrent protection output current		1.3	-	2.3	A
$f_{OFF}$	overfrequency protection frequency	at PWM output frequency	-	710	1031	kHz
$f_{UFP}$	underfrequency protection frequency	at PWM output frequency	96	175	-	kHz

[1] After switching from Off/Amplifier mode to Power-down mode.

## 14.2 AC characteristics

**Table 38. AC characteristics**

All parameters are guaranteed for  $V_{DD} = 1.8\text{ V}$ ;  $V_{DDP} = 3.7\text{ V}$ ;  $R_L = 8\ \Omega$ ;  $L_L = 44\ \mu\text{H}$ ;  $f_i = 1\text{ kHz}$ ;  $f_s = 48\text{ kHz}$ ; clip control off;  $T_{amb} = 25\text{ }^\circ\text{C}$  unless otherwise specified.

Symbol	Parameter	Conditions	Min	Typ	Max	Unit
<b>Class D amplifier</b>						
$P_{o(RMS)}$	RMS output power	$R_L = 8\ \Omega$				
		THD+N = 1 %	0.65	0.7	-	W
		THD+N = 10 %	-	0.85	-	W
		$R_L = 4\ \Omega$				
		THD+N = 1 %	-	1.2	-	W
		THD+N = 10 %	-	1.5	-	W
		$R_L = 8\ \Omega$ ; $V_{DDP} = 4.2\text{ V}$				
		THD+N = 1 %	-	0.9	-	W
		THD+N = 10 %	-	1.1	-	W
		$R_L = 4\ \Omega$ ; $V_{DDP} = 4.2\text{ V}$				
		THD+N = 1 %	-	1.6	-	W
		THD+N = 10 %	-	1.95	-	W
		$R_L = 8\ \Omega$ ; $V_{DDP} = 5.0\text{ V}$				
		THD+N = 1 %	-	1.35	-	W
		THD+N = 10 %	-	1.6	-	W
		$R_L = 4\ \Omega$ ; $V_{DDP} = 5.0\text{ V}$				
		THD+N = 1 %	-	2.35	-	W
		THD+N = 10 %	-	2.75	-	W
$\eta_{po}$	output power efficiency	$P_{o(RMS)} = 850\text{ mW}$	-	92	-	%
THD+N	total harmonic distortion-plus-noise	$P_{o(RMS)} = 100\text{ mW}$	-	0.02	0.1	%
$V_{n(o)}$	output noise voltage	soft mute; A-weighted	-	60	-	$\mu\text{V}$
S/N	signal-to-noise ratio	$V_{PVDD} = 5\text{ V}$ ; $P_{o(RMS)} = 1.3\text{ W}$ ; A-weighted	-	94	-	dB
PSRR	power supply rejection ratio	$V_{ripple} = 200\text{ mV}$ ; $f_{ripple} = 217\text{ Hz}$	65	80	-	dB
$V_{o(RMS)}$	RMS output voltage	At -9 dBFS (RMS) digital input volume control = 0 dB bass and treble control = 0 dB equalizer bypassed and DRC bypassed	1.9	2.1	2.3	V
<b>Power-up, power-down and propagation times</b>						
$t_{d(on)}$	turn-on delay time	Off mode to Operating mode, soft de-mute excluded	-	-	5.6	ms
$t_{d(mute\_off)}$	mute off delay time		-	-	2.67	ms
$t_{d(soft\_mute)}$	soft mute delay time		-	-	2.67	ms
$t_{PD}$	propagation delay	bass and treble control = 0 dB, equalizer bypassed and DRC bypassed.	-	600	-	$\mu\text{s}$



### 14.3 I<sup>2</sup>C timing characteristics

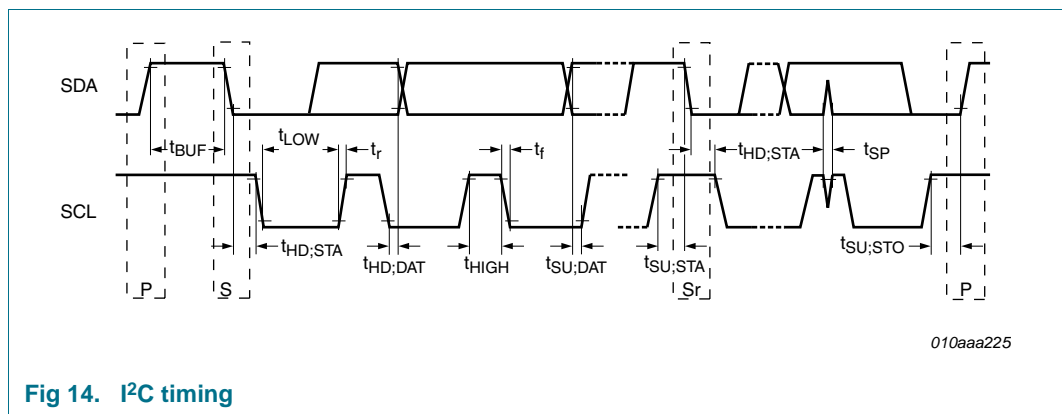
**Table 39. I<sup>2</sup>C-bus interface characteristics; see Figure 14**

All parameters are guaranteed for  $V_{DDP} = 3.7\text{ V}$ ,  $R_L = 8\ \Omega$ ,  $L_L = 44\ \mu\text{H}$ ;  $f_i = 1\text{ kHz}$ ;  $f_s = 48\text{ kHz}$ ; clip control off;  $T_{amb} = 25\text{ }^\circ\text{C}$  unless otherwise specified.

Symbol	Parameter	Conditions	Min	Typ	Max	Unit
$f_{SCL}$	SCL clock frequency		-	-	400	kHz
$t_{LOW}$	LOW period of the SCL clock		1.3	-	-	$\mu\text{s}$
$t_{HIGH}$	HIGH period of the SCL clock		0.6	-	-	$\mu\text{s}$
$t_r$	rise time	SDA and SCL signals [1]	$20 + 0.1 C_b$	-	-	ns
$t_f$	fall time	SDA and SCL signals [1]	$20 + 0.1 C_b$	-	-	ns
$t_{HD;STA}$	hold time (repeated) START condition	[2]	0.6	-	-	$\mu\text{s}$
$t_{SU;STA}$	set-up time for a repeated START condition		0.6	-	-	$\mu\text{s}$
$t_{SU;STO}$	set-up time for STOP condition		0.6	-	-	$\mu\text{s}$
$t_{BUF}$	bus free time between a STOP and START condition		1.3	-	-	$\mu\text{s}$
$t_{SU;DAT}$	data set-up time		100	-	-	ns
$t_{HD;DAT}$	data hold time		0	-	-	$\mu\text{s}$
$t_{SP}$	pulse width of spikes that must be suppressed by the input filter		0	-	50	ns
$C_b$	capacitive load for each bus line		-	-	400	pF

[1]  $C_b$  is the total capacitance of one bus line in pF. The maximum capacitive load for each bus line is 400 pF.

[2] After this period, the first clock pulse is generated.



**Fig 14. I<sup>2</sup>C timing**

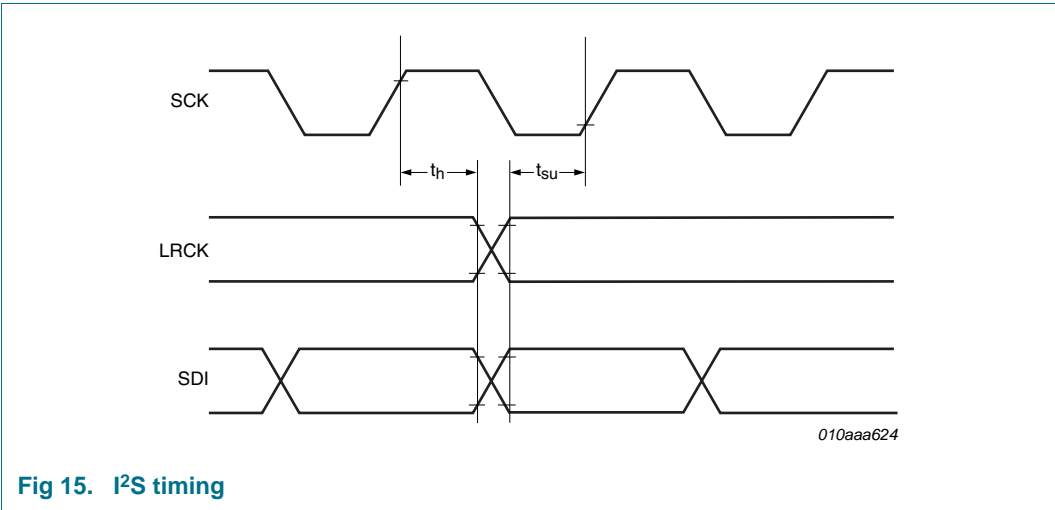
14.4 I<sup>2</sup>S timing characteristics

Table 40. I<sup>2</sup>S bus interface characteristics; see Figure 15

All parameters are guaranteed for  $V_{DD} = 1.8\text{ V}$ ;  $V_{DDP} = 3.7\text{ V}$ ,  $R_L = 8\text{ }\Omega$ <sup>[1]</sup>,  $L_L = 44\text{ }\mu\text{H}$ <sup>[1]</sup>;  $f_i = 1\text{ kHz}$ ; clip control off;  $T_{amb} = 25\text{ }^\circ\text{C}$  unless otherwise specified.

Symbol	Parameter	Conditions	Min	Typ	Max	Unit
$f_s$	sampling frequency	on LRCK1 or LRCK2 pins	8	-	96	kHz
$f_{clk}$	clock frequency	on SCK1 or SCK2 pins	$32f_s$	-	$64f_s$	Hz
$t_{su}$	set-up time	LRCK edge to SCK HIGH	10	-	-	ns
		SDI edge to SCK HIGH	10	-	-	ns
$t_h$	hold time	SCK HIGH to LRCK edge	10	-	-	ns
		SCK HIGH to SDI edge	10	-	-	ns

[1]  $R_L$  = load resistance;  $L_L$  = load inductance.



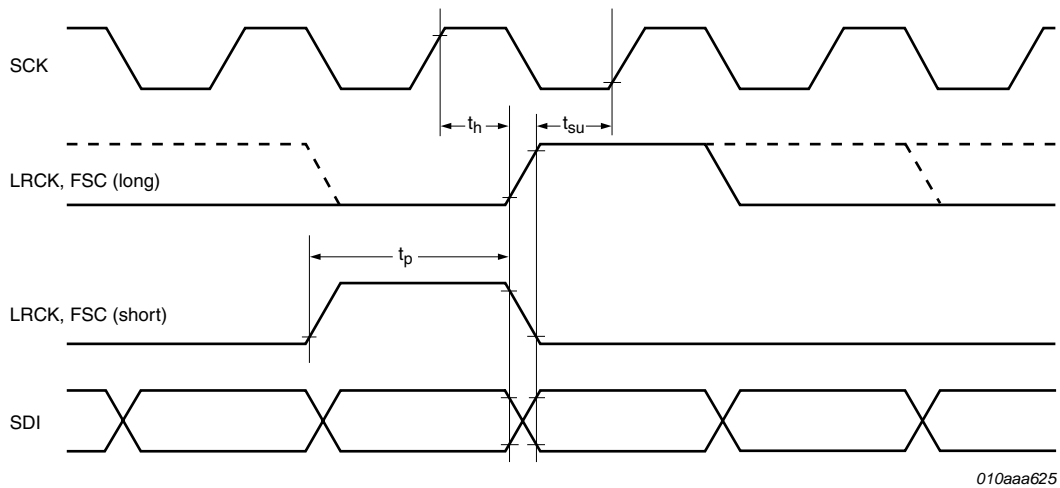
## 14.5 PCM/IOM2 timing characteristics

**Table 41. PCM/IOM2 characteristics; see Figure 16**

All parameters are guaranteed for  $V_{DD} = 1.8$  V;  $V_{DDP} = 3.7$  V,  $R_L = 8 \Omega$  [1],  $L_L = 44 \mu H$  [1];  $f_i = 1$  kHz; clip control off;  $T_{amb} = 25$  °C unless otherwise specified.

Symbol	Parameter	Conditions	Min	Typ	Max	Unit
$f_p$	pulse frequency	on LRCK1 or LRCK2 pins	-	-	8	kHz
$f_{clk}$	clock frequency	on SCK1 or SCK2 pin	$16f_p$	-	$192f_p$	Hz
$t_{su}$	set-up time	SCK HIGH to LRCK edge	10	-	-	ns
		SCK HIGH to SDI edge	10	-	-	ns
$t_h$	hold time	LRCK edge to SCK HIGH	10	-	-	ns
		SDI edge to SCK HIGH	10	-	-	ns
$t_p$	pulse duration	pulse on LRCK1 pin or LRCK2 pin	$1/f_{clk}$	-	-	s

[1]  $R_L$  = load resistance;  $L_L$  = load inductance.



**Fig 16. PCM/IOM2 timing**

## 15. Application information

The TFA9879 is a filter-free BTL class-D amplifier that uses a fixed frequency PWM modulation scheme (see the simplified application schematic in [Figure 18](#)). When the TFA9879 is idle (no audio input signal), the voltage across the speaker is 0 V, generating no additional current. Even when the PWM output is modulated by the audio input signal, the out-of-band AC ripple current in the voice coil is very small compared to the audio current. This is due to the inductive behavior of the voice coil at the PWM switching frequency. A typical voice coil inductance is in the range 30  $\mu$ H to 80  $\mu$ H.

### 15.1 Power capability

#### 15.1.1 Estimating the RMS output power ( $P_{O(RMS)}$ )

The RMS output power,  $P_{O(RMS)}$ , at THD + N = 1 % just before clipping can be estimated using [Equation 11](#), with clip-control off, or using [Equation 12](#), with clip-control on.

Clip control off:

$$P_{O(RMS)1\%} = \frac{\left( \left( \frac{R_L}{R_L + R_S + (2 \times R_{DSon})} \right) \times V_{DDP} \right)^2}{2 \times R_L} \quad (11)$$

Clip control on:

$$P_{O(RMS)1\%} = \frac{\left( \left( \frac{R_L}{R_L + R_S + (2 \times R_{DSon})} \right) \times M_{max} \times V_{DDP} \right)^2}{2 \times R_L} \quad (12)$$

where:

$R_L$  = load resistance ( $\Omega$ )

$R_S$  = total series resistance of application

$R_{DSon}$  = on-resistance of power switch (typically 230 m $\Omega$ )

$V_{DDP}$  = power supply voltage (V)

$M_{max}$  = maximum modulation depth (clip control on); typically 0.9

*Example (clip control off):*

With  $V_{DDP} = 5$  V,  $R_{DSon} = 0.23$   $\Omega$  (at  $T_j = 25$   $^{\circ}$ C),  $R_S = 0.14$   $\Omega$ :

$P_{O(RMS)1\%} = 1.35$  W in an 8  $\Omega$  load or

$P_{O(RMS)1\%} = 2.35$  W in a 4  $\Omega$  load

The RMS output power at THD + N = 10 % can be estimated using [Equation 13](#):

$$P_{O(RMS)10\%} = 1.25 \times P_{O(RMS)1\%} \quad (13)$$

### 15.1.2 Output current limiting

The peak output current  $I_{O(max)}$  is limited internally by OCP. The minimum OCP trigger level is 1.3 A. During normal operation, the output current should not exceed this threshold level, otherwise the audio signal will be distorted. The peak output current in BTL configuration can be calculated using [Equation 14](#):

$$I_{O(max)} \leq I_{O(OC P)} \leq \frac{V_{DDP}}{2 \times R_{DSon} + R_L} \leq 1.3A \quad (14)$$

where:

$V_{DDP}$  = power supply voltage (V)

$R_L$  = load resistance ( $\Omega$ )

$R_{DSon}$  = drain-source on-state resistance ( $\Omega$ )

*Example:*

*A 4  $\Omega$  speaker can be used with a 5 V supply without triggering OCP.*

### 15.2 PWM output filtering

The TFA9879 PWM power stage is optimized to meet the legal limits (FCC) for radiated emissions without requiring an external filter (speaker cable < 5 cm). But a low-pass LC filter is recommended if a long speaker cable can't be avoided or other components in the application are sensitive to frequencies in the 10 MHz to 150 MHz range (e.g. an FM tuner). The suggested differential low-pass filter consists of a ferrite bead inductor ( $Z > 80 \Omega$  at 100 MHz) and a small ceramic capacitor of about 1 nF (see [Figure 17](#)).

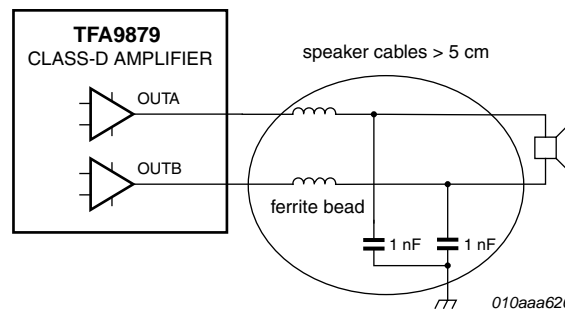


Fig 17. Optional low-pass LC filter

### 15.3 Supply decoupling and filtering

A ceramic decoupling capacitor of between 1  $\mu F$  and 10  $\mu F$  should be placed close to the TFA9879 to minimize the size of the high-frequency current loop, thereby optimizing EMC performance. Optionally, a small 1 nF ceramic capacitor can be connected in parallel to further reduce the impedance.

## 15.4 PCB layout considerations

Great care should be taken when designing the PCB layout for a Class-D amplifier circuit as the layout can affect the audio performance, the EMC performance and/or the thermal performance, and can even affect the functionality of the TFA9879.

### 15.4.1 EMC considerations

The decoupling capacitors on pins  $V_{DD}$ ,  $V_{DDP}$  and STABA should be placed close to the TFA9879, referenced to a solid ground plane. The exposed DAP should also be connected to this ground plane.

### 15.4.2 Thermal considerations

The TFA9879 is available in a thermally enhanced HVQFN24 (SOT616-3) package for reflow soldering. The HVQFN24 has an exposed DAP that significantly reduces the thermal resistance,  $R_{th(j-a)}$ . To achieve a lower overall thermal resistance, the exposed DAP should be soldered to a thermal copper plane. Increasing the area of the thermal plane, the number of planes or the copper thickness can further reduce the thermal resistance. The typical thermal resistance (free air and natural convection) of a practical PCB implementation is:

$R_{th(j-a)} = 67 \text{ K/W}$  for a two-layer application board (18 mm × 22 mm, 35 μm copper, FR4 base material).

[Equation 15](#) describes the relationship between the maximum allowable power dissipation (P) and the thermal resistance from junction to ambient.

$$R_{th(j-a)} = \frac{T_{j(max)} - T_{amb}}{P} \quad (15)$$

where:

$R_{th(j-a)}$  = thermal resistance from junction to ambient

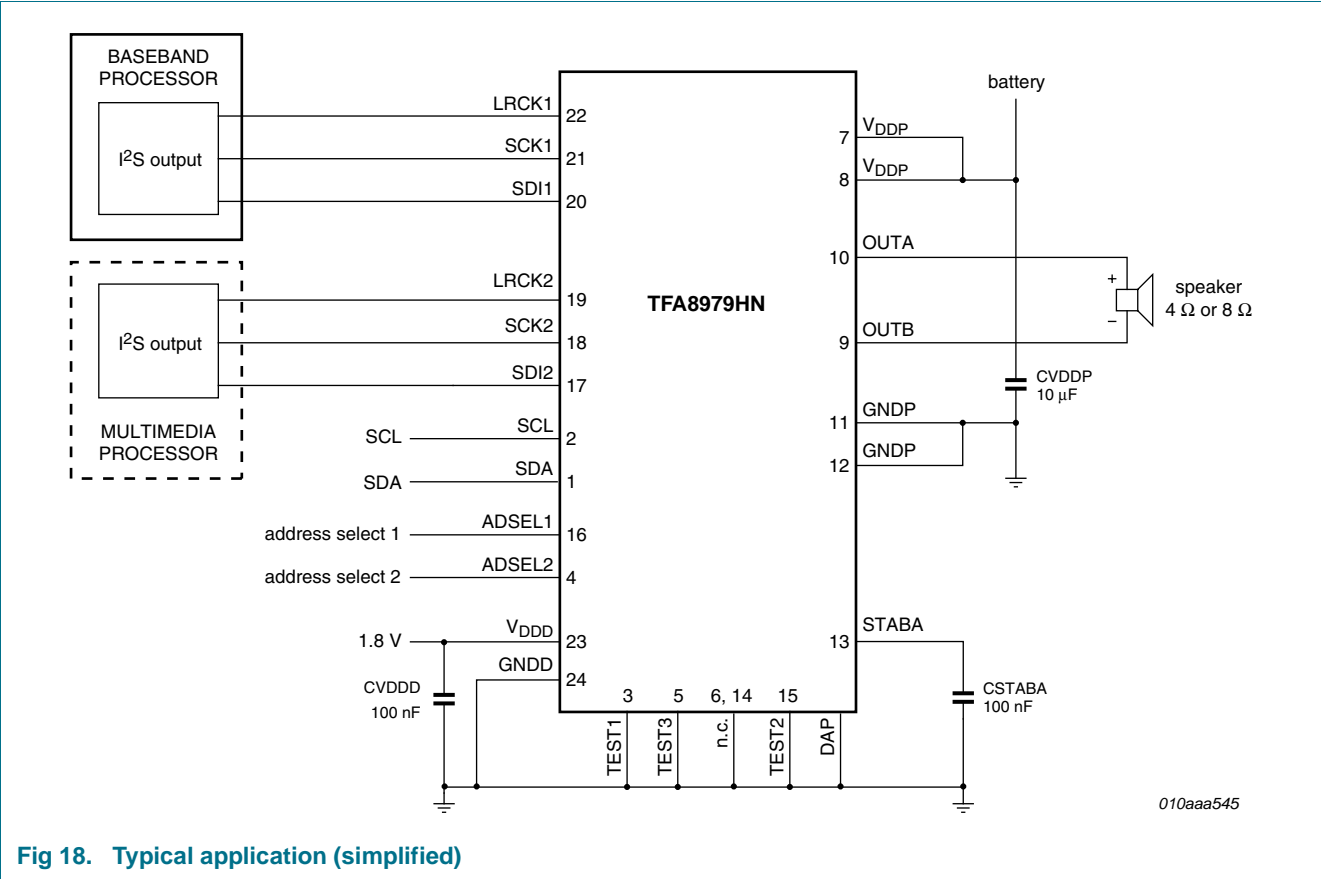
$T_{j(max)}$  = maximum junction temperature (125 °C)

$T_{amb}$  = ambient temperature

P = power dissipated in the TFA9879

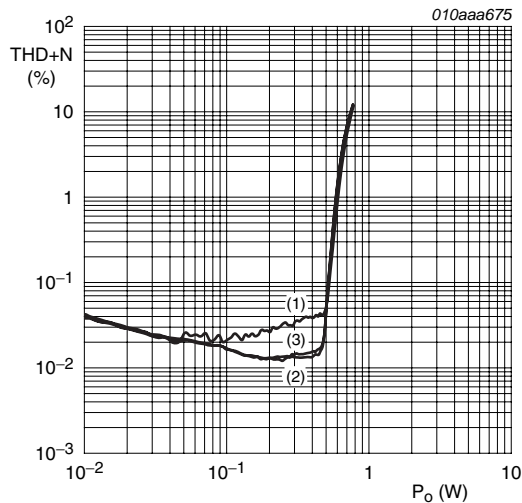
OTP will limit the maximum junction temperature to 130 °C to avoid thermal damage.

15.5 Typical application diagram (simplified)



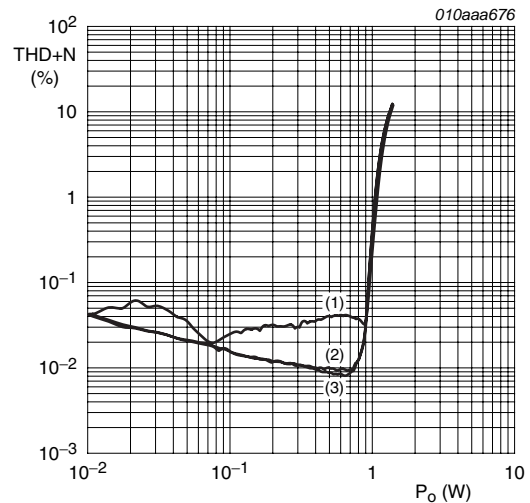
## 15.6 Curves measured in reference design (demonstration board)

All measurements were taken with  $V_{DD} = 1.8\text{ V}$ ,  $f_s = 48\text{ kHz}$ , clip control on and the high-pass filter off, unless otherwise specified.



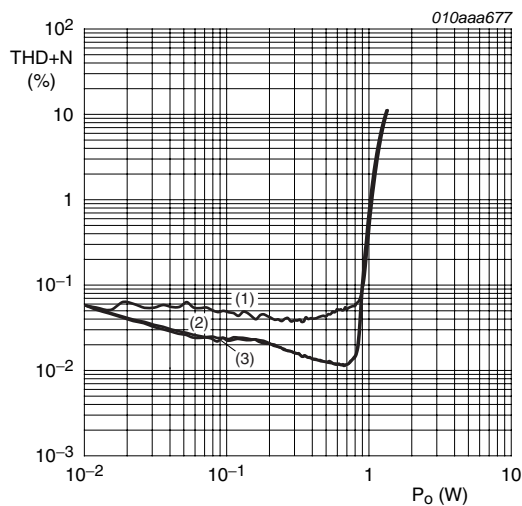
- (1)  $f_i = 6\text{ kHz}$ .
- (2)  $f_i = 1\text{ kHz}$ .
- (3)  $f_i = 100\text{ Hz}$ .

a.  $V_{DDP} = 3.7\text{ V}$ ,  $R_L = 8\ \Omega$



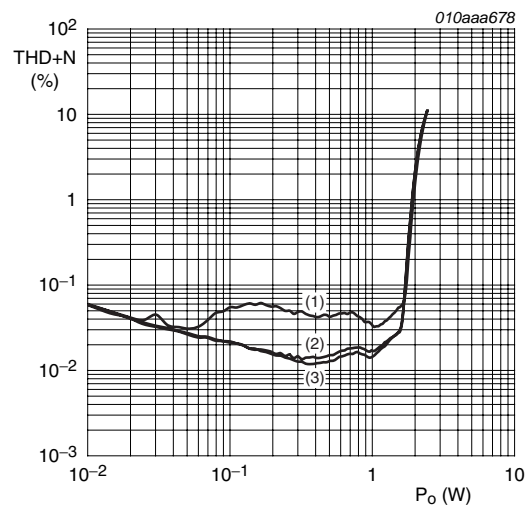
- (1)  $f_i = 6\text{ kHz}$ .
- (2)  $f_i = 1\text{ kHz}$ .
- (3)  $f_i = 100\text{ Hz}$ .

b.  $V_{DDP} = 5\text{ V}$ ,  $R_L = 8\ \Omega$



- (1)  $f_i = 6\text{ kHz}$ .
- (2)  $f_i = 1\text{ kHz}$ .
- (3)  $f_i = 100\text{ Hz}$ .

c.  $V_{DDP} = 3.7\text{ V}$ ,  $R_L = 4\ \Omega$

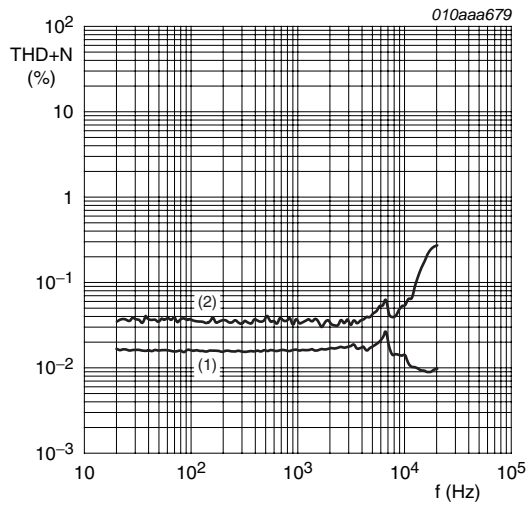


- (1)  $f_i = 6\text{ kHz}$ .
- (2)  $f_i = 1\text{ kHz}$ .
- (3)  $f_i = 100\text{ Hz}$ .

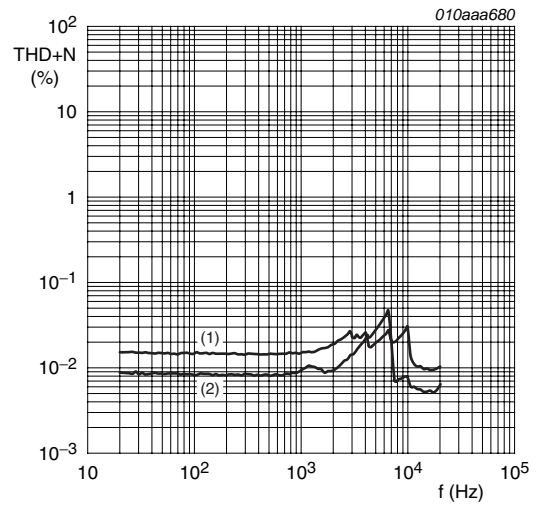
d.  $V_{DDP} = 5\text{ V}$ ,  $R_L = 4\ \Omega$

Fig 19. Total harmonic distortion-plus-noise as a function of output power

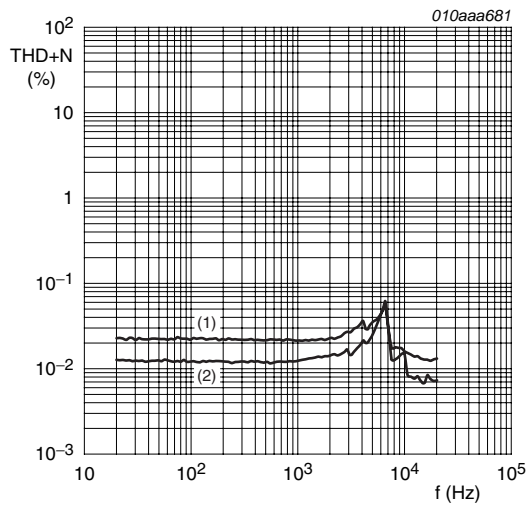




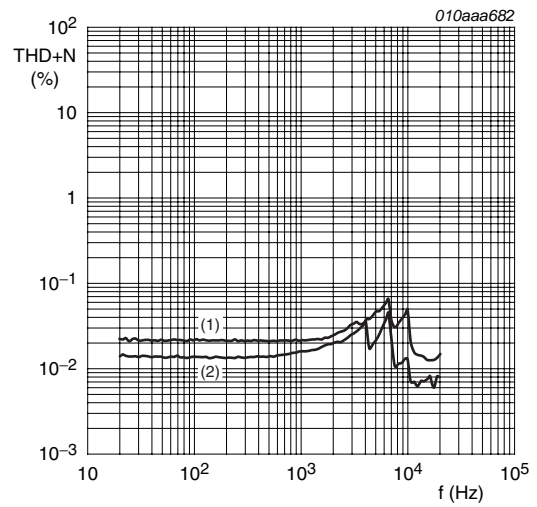
- (1)  $P_o = 100 \text{ mW}$   
(2)  $P_o = 500 \text{ mW}$   
a.  $V_{DDP} = 3.7 \text{ V}$ ,  $R_L = 8 \Omega$



- (1)  $P_o = 100 \text{ mW}$   
(2)  $P_o = 500 \text{ mW}$   
b.  $V_{DDP} = 5 \text{ V}$ ,  $R_L = 8 \Omega$

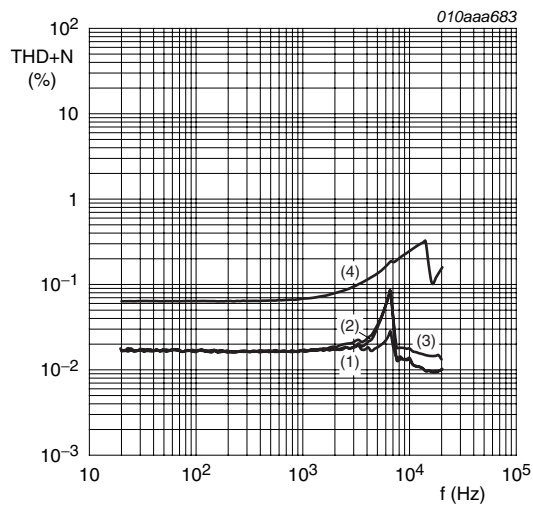


- (1)  $P_o = 100 \text{ mW}$   
(2)  $P_o = 500 \text{ mW}$   
c.  $V_{DDP} = 3.7 \text{ V}$ ,  $R_L = 4 \Omega$

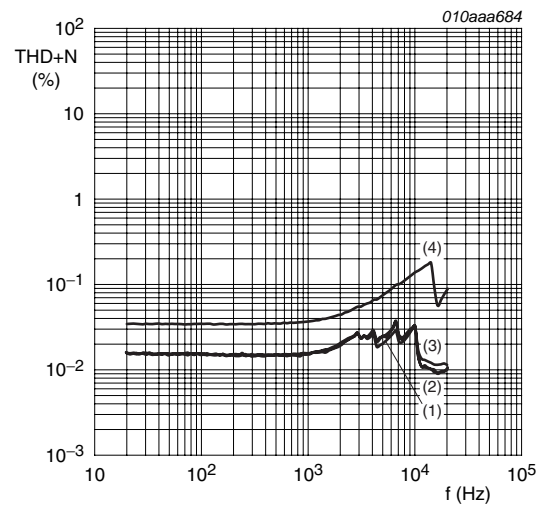


- (1)  $P_o = 100 \text{ mW}$   
(2)  $P_o = 1 \text{ W}$   
d.  $V_{DDP} = 5 \text{ V}$ ,  $R_L = 4 \Omega$

Fig 20. Total harmonic distortion-plus-noise as a function of frequency

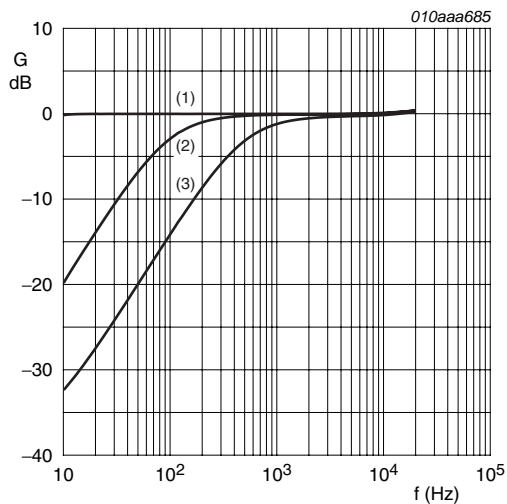


- (1)  $V_{\text{ripple}} = 0 \text{ V}$  ( $f_{\text{ripple}} = 0 \text{ Hz}$ )  
 (2)  $f_{\text{ripple}} = 217 \text{ Hz}$   
 (3)  $f_{\text{ripple}} = 1 \text{ kHz}$   
 (4)  $f_{\text{ripple}} = 6 \text{ kHz}$   
 a.  $V_{\text{DDP}} = 3.7 \text{ V}$ ,  $R_L = 8 \Omega$ ,  $P_o = 100 \text{ mW}$ ,  
 $V_{\text{ripple}} = 200 \text{ mV (RMS)}$



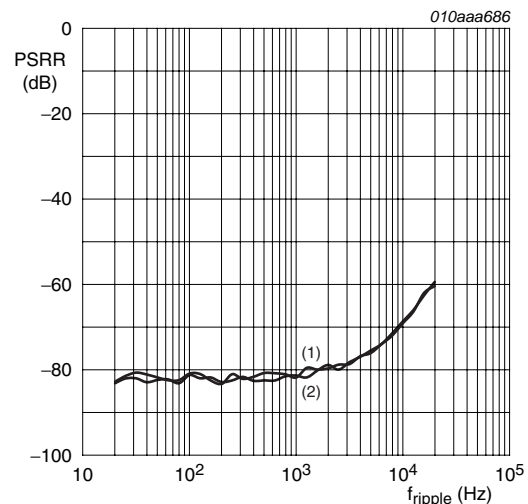
- (1)  $V_{\text{ripple}} = 0 \text{ V}$  ( $f_{\text{ripple}} = 0 \text{ Hz}$ )  
 (2)  $f_{\text{ripple}} = 217 \text{ Hz}$   
 (3)  $f_{\text{ripple}} = 1 \text{ kHz}$   
 (4)  $f_{\text{ripple}} = 6 \text{ kHz}$   
 b.  $V_{\text{DDP}} = 5 \text{ V}$ ,  $R_L = 8 \Omega$ ,  $P_o = 100 \text{ mW}$ ,  
 $V_{\text{ripple}} = 200 \text{ mV (RMS)}$

**Fig 21. Total harmonic distortion-plus-noise and power supply intermodulation distortion as a function of frequency**



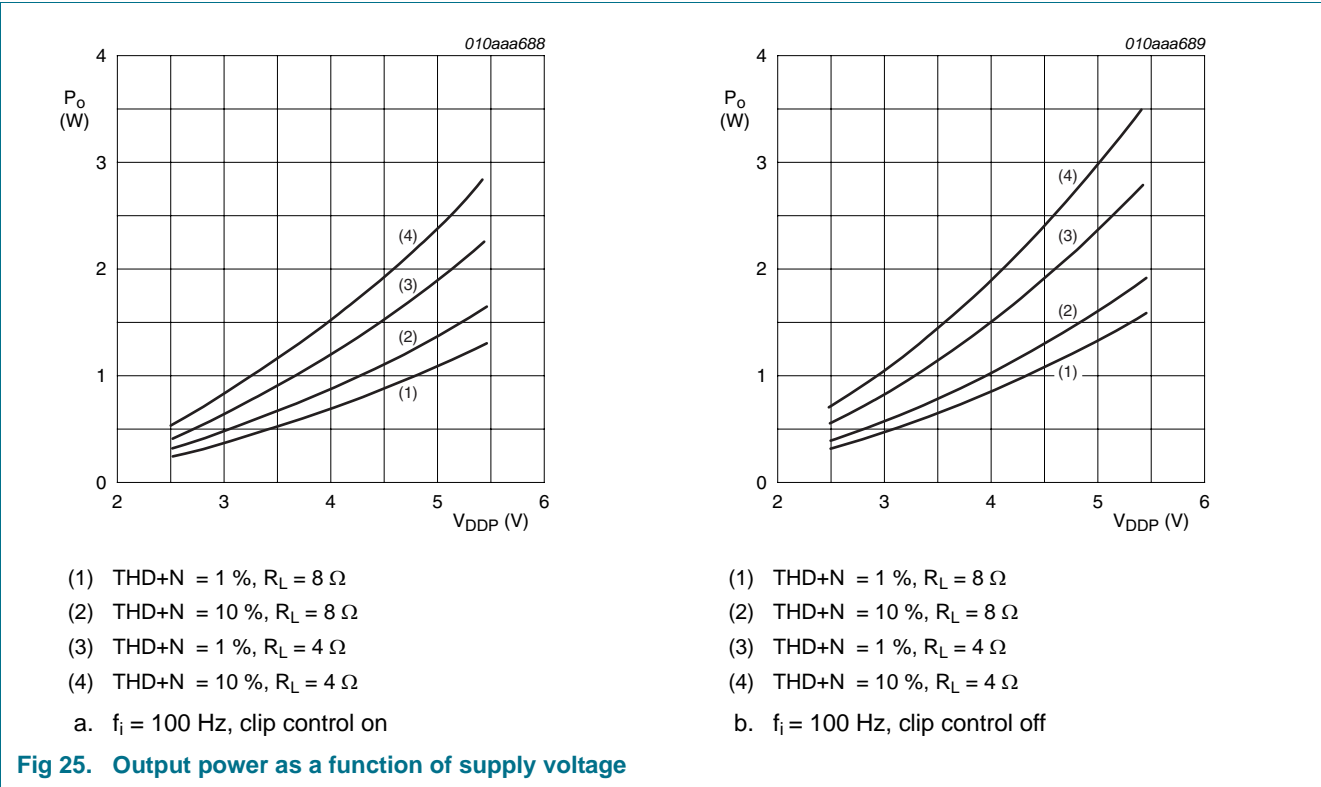
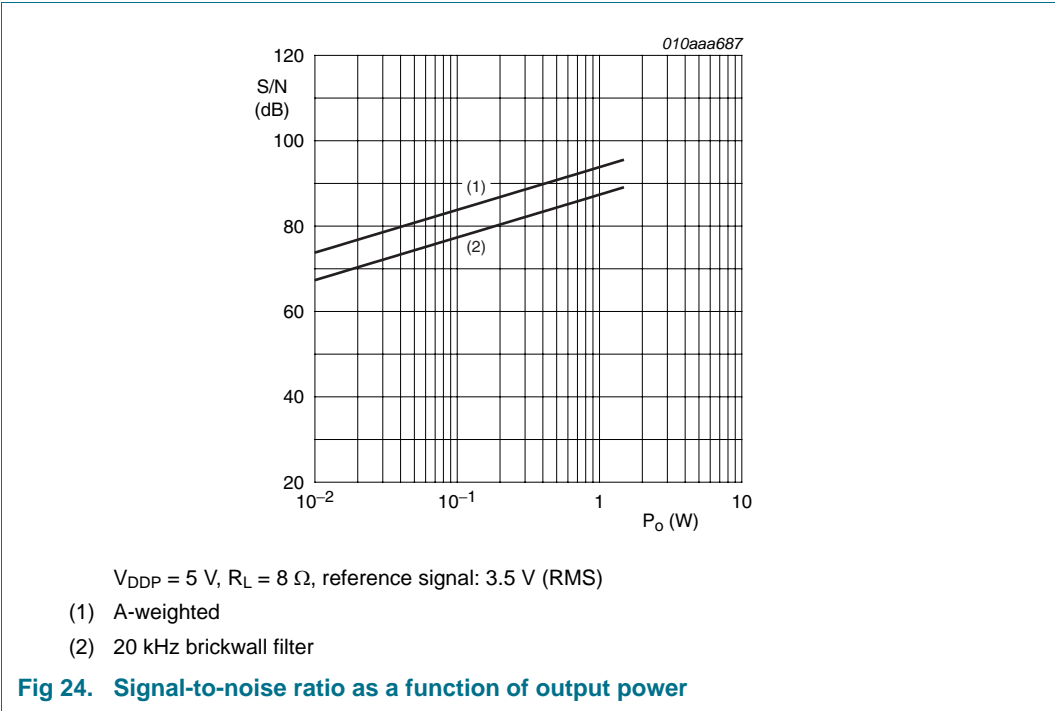
- $V_{\text{DDP}} = 3.7 \text{ V}$ ,  $R_L = 8 \Omega$ ,  $P_o = 500 \text{ mW}$   
 (1) high-pass filter off  
 (2) high-pass filter cut-off frequency: 100 Hz  
 (3) high-pass filter cut-off frequency: 500 Hz

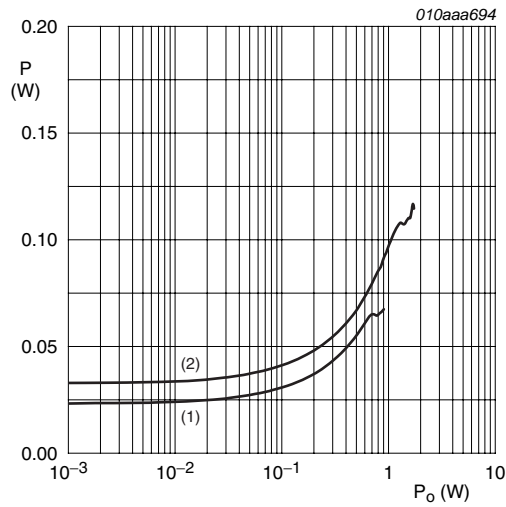
**Fig 22. Normalized gain as a function of frequency**



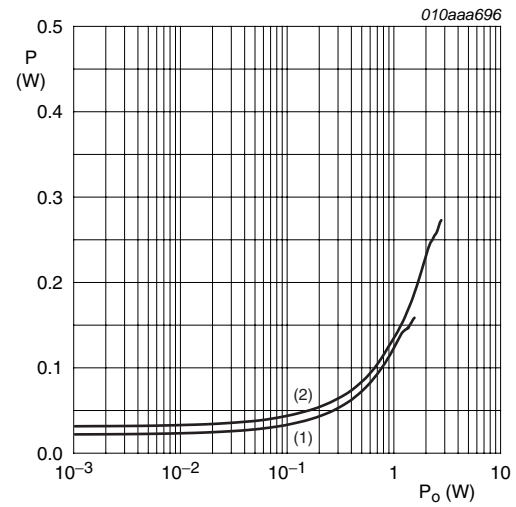
- $V_{\text{DDP}} = 5 \text{ V}$ ,  $R_L = 8 \Omega$ ,  $\text{ripple} = 200 \text{ mV (RMS)}$   
 (1)  $V_{\text{DDP}} = 3.7 \text{ V}$   
 (2)  $V_{\text{DDP}} = 5 \text{ V}$

**Fig 23. Power supply rejection ration as a function of ripple frequency**



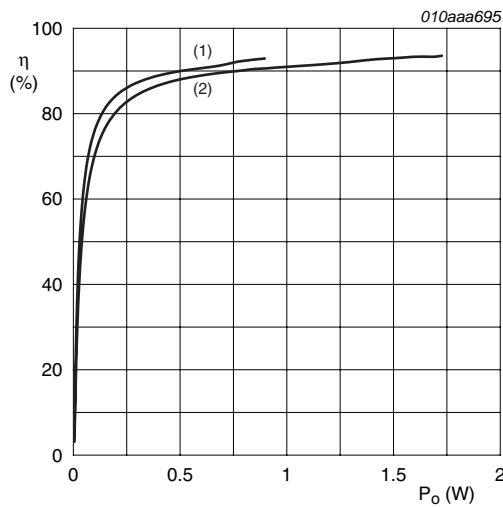


- (1)  $V_{DDP} = 3.7 \text{ V}$   
 (2)  $V_{DDP} = 5 \text{ V}$   
 a.  $R_L = 8 \Omega$ ,  $f_i = 1 \text{ kHz}$ , clip control off

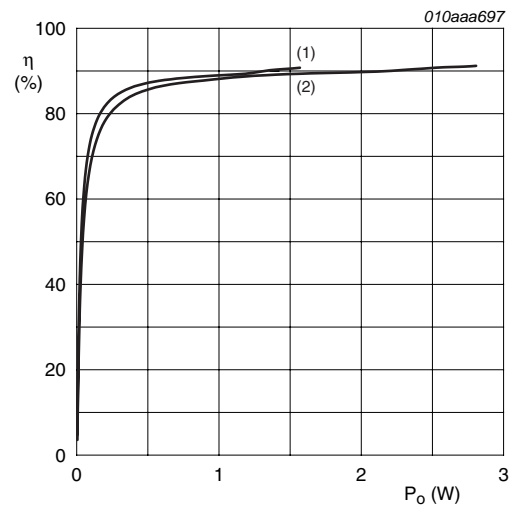


- (1)  $V_{DDP} = 3.7 \text{ V}$   
 (2)  $V_{DDP} = 5 \text{ V}$   
 b.  $R_L = 4 \Omega$ ,  $f_i = 1 \text{ kHz}$ , clip control off

Fig 26. Power dissipation as a function of output power



- (1)  $V_{DDP} = 3.7 \text{ V}$   
 (2)  $V_{DDP} = 5 \text{ V}$   
 a.  $R_L = 8 \Omega$ ,  $f_i = 1 \text{ kHz}$ , clip control off



- (1)  $V_{DDP} = 3.7 \text{ V}$   
 (2)  $V_{DDP} = 5 \text{ V}$   
 b.  $R_L = 4 \Omega$ ,  $f_i = 1 \text{ kHz}$ , clip control off

Fig 27. Efficiency as a function of output power

16. Package outline

HVQFN24: plastic thermal enhanced very thin quad flat package; no leads;  
 24 terminals; body 4 x 4 x 0.85 mm

SOT616-3

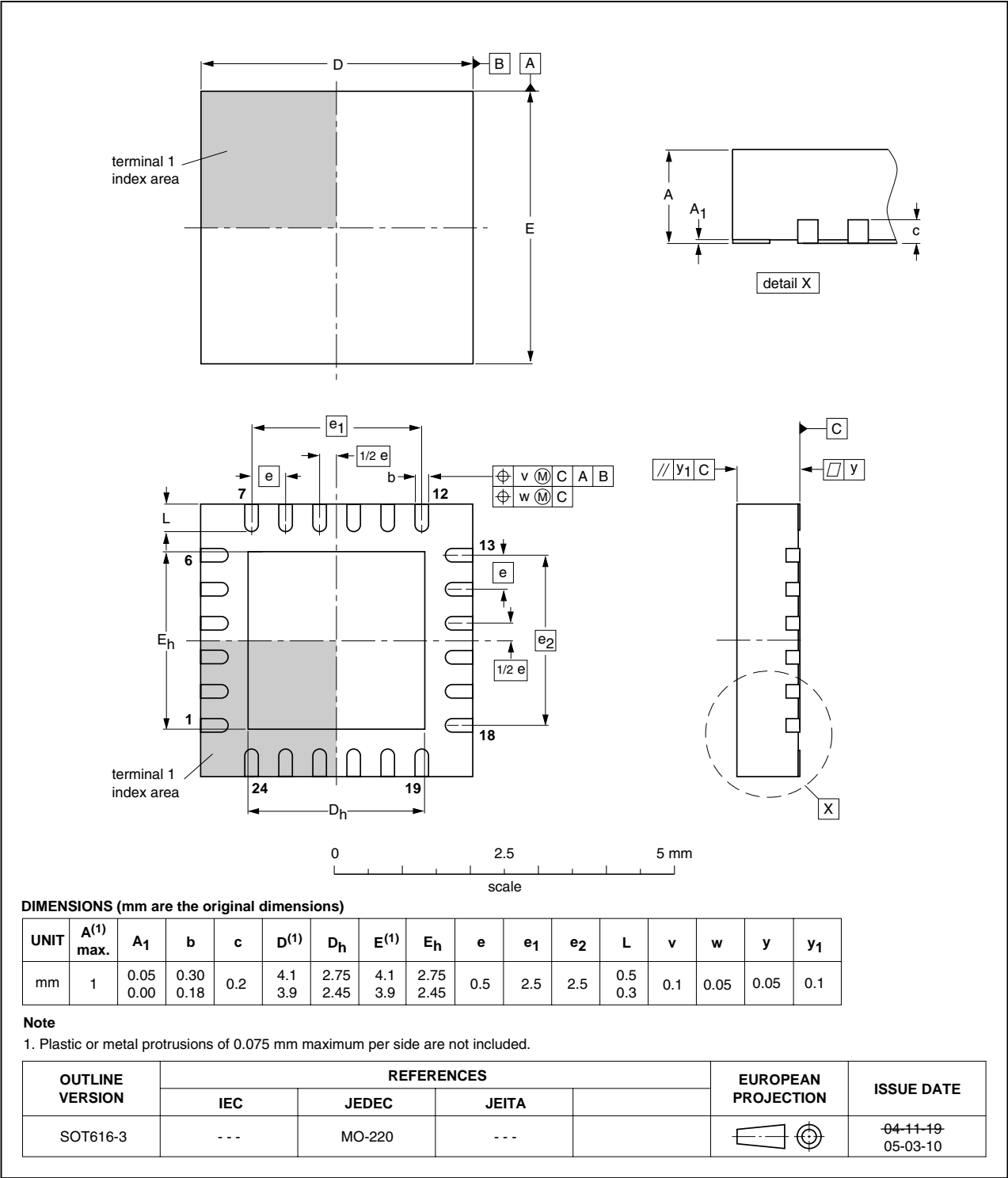


Fig 28. Package outline TFA9879 (HVQFN24)

## 17. Soldering of SMD packages

This text provides a very brief insight into a complex technology. A more in-depth account of soldering ICs can be found in Application Note *AN10365 "Surface mount reflow soldering description"*.

### 17.1 Introduction to soldering

Soldering is one of the most common methods through which packages are attached to Printed Circuit Boards (PCBs), to form electrical circuits. The soldered joint provides both the mechanical and the electrical connection. There is no single soldering method that is ideal for all IC packages. Wave soldering is often preferred when through-hole and Surface Mount Devices (SMDs) are mixed on one printed wiring board; however, it is not suitable for fine pitch SMDs. Reflow soldering is ideal for the small pitches and high densities that come with increased miniaturization.

### 17.2 Wave and reflow soldering

Wave soldering is a joining technology in which the joints are made by solder coming from a standing wave of liquid solder. The wave soldering process is suitable for the following:

- Through-hole components
- Leaded or leadless SMDs, which are glued to the surface of the printed circuit board

Not all SMDs can be wave soldered. Packages with solder balls, and some leadless packages which have solder lands underneath the body, cannot be wave soldered. Also, leaded SMDs with leads having a pitch smaller than ~0.6 mm cannot be wave soldered, due to an increased probability of bridging.

The reflow soldering process involves applying solder paste to a board, followed by component placement and exposure to a temperature profile. Leaded packages, packages with solder balls, and leadless packages are all reflow solderable.

Key characteristics in both wave and reflow soldering are:

- Board specifications, including the board finish, solder masks and vias
- Package footprints, including solder thieves and orientation
- The moisture sensitivity level of the packages
- Package placement
- Inspection and repair
- Lead-free soldering versus SnPb soldering

### 17.3 Wave soldering

Key characteristics in wave soldering are:

- Process issues, such as application of adhesive and flux, clinching of leads, board transport, the solder wave parameters, and the time during which components are exposed to the wave
- Solder bath specifications, including temperature and impurities

## 17.4 Reflow soldering

Key characteristics in reflow soldering are:

- Lead-free versus SnPb soldering; note that a lead-free reflow process usually leads to higher minimum peak temperatures (see [Figure 29](#)) than a SnPb process, thus reducing the process window
- Solder paste printing issues including smearing, release, and adjusting the process window for a mix of large and small components on one board
- Reflow temperature profile; this profile includes preheat, reflow (in which the board is heated to the peak temperature) and cooling down. It is imperative that the peak temperature is high enough for the solder to make reliable solder joints (a solder paste characteristic). In addition, the peak temperature must be low enough that the packages and/or boards are not damaged. The peak temperature of the package depends on package thickness and volume and is classified in accordance with [Table 42](#) and [43](#)

**Table 42. SnPb eutectic process (from J-STD-020C)**

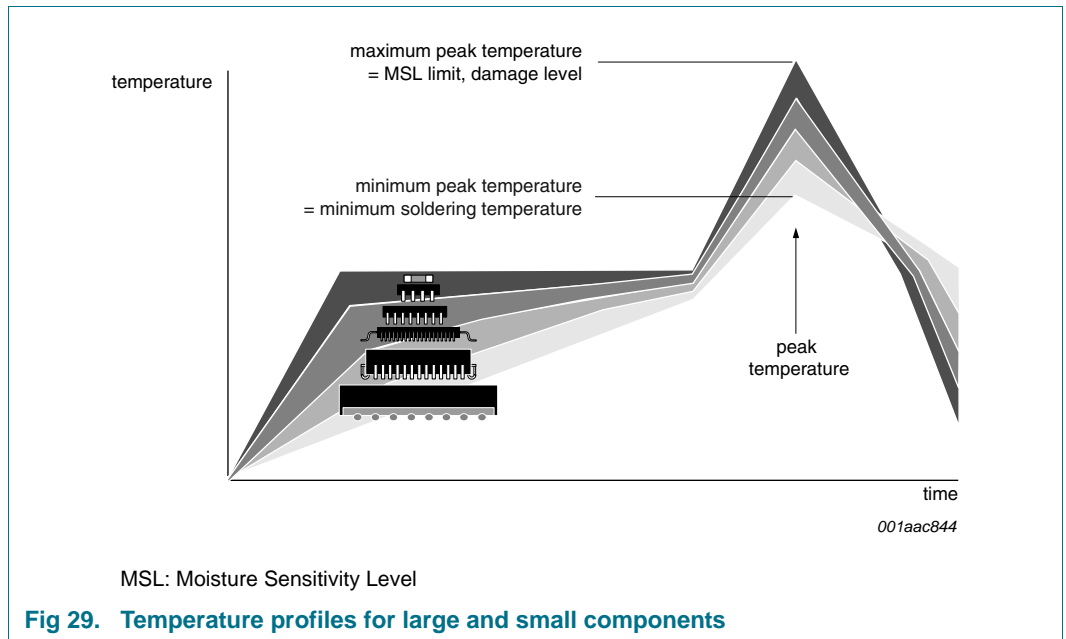
Package thickness (mm)	Package reflow temperature (°C)	
	Volume (mm <sup>3</sup> )	
	< 350	≥ 350
< 2.5	235	220
≥ 2.5	220	220

**Table 43. Lead-free process (from J-STD-020C)**

Package thickness (mm)	Package reflow temperature (°C)		
	Volume (mm <sup>3</sup> )		
	< 350	350 to 2000	> 2000
< 1.6	260	260	260
1.6 to 2.5	260	250	245
> 2.5	250	245	245

Moisture sensitivity precautions, as indicated on the packing, must be respected at all times.

Studies have shown that small packages reach higher temperatures during reflow soldering, see [Figure 29](#).



For further information on temperature profiles, refer to Application Note *AN10365* “Surface mount reflow soldering description”.



18. Revision history

Table 44. Revision history

Document ID	Release date	Data sheet status	Change notice	Supersedes
TFA9879 v.2	20101015	Product data sheet	-	TFA9879 v.1
Modifications:	<ul style="list-style-type: none"> <li>Specification status changed to Product data sheet</li> </ul>			
TFA9879 v.1	20100408	Preliminary data sheet	-	-

## 19. Legal information

### 19.1 Data sheet status

Document status <sup>[1][2]</sup>	Product status <sup>[3]</sup>	Definition
Objective [short] data sheet	Development	This document contains data from the objective specification for product development.
Preliminary [short] data sheet	Qualification	This document contains data from the preliminary specification.
Product [short] data sheet	Production	This document contains the product specification.

[1] Please consult the most recently issued document before initiating or completing a design.

[2] The term 'short data sheet' is explained in section "Definitions".

[3] The product status of device(s) described in this document may have changed since this document was published and may differ in case of multiple devices. The latest product status information is available on the Internet at URL <http://www.nxp.com>.

### 19.2 Definitions

**Draft** — The document is a draft version only. The content is still under internal review and subject to formal approval, which may result in modifications or additions. NXP Semiconductors does not give any representations or warranties as to the accuracy or completeness of information included herein and shall have no liability for the consequences of use of such information.

**Short data sheet** — A short data sheet is an extract from a full data sheet with the same product type number(s) and title. A short data sheet is intended for quick reference only and should not be relied upon to contain detailed and full information. For detailed and full information see the relevant full data sheet, which is available on request via the local NXP Semiconductors sales office. In case of any inconsistency or conflict with the short data sheet, the full data sheet shall prevail.

**Product specification** — The information and data provided in a Product data sheet shall define the specification of the product as agreed between NXP Semiconductors and its customer, unless NXP Semiconductors and customer have explicitly agreed otherwise in writing. In no event however, shall an agreement be valid in which the NXP Semiconductors product is deemed to offer functions and qualities beyond those described in the Product data sheet.

### 19.3 Disclaimers

**Limited warranty and liability** — Information in this document is believed to be accurate and reliable. However, NXP Semiconductors does not give any representations or warranties, expressed or implied, as to the accuracy or completeness of such information and shall have no liability for the consequences of use of such information.

In no event shall NXP Semiconductors be liable for any indirect, incidental, punitive, special or consequential damages (including - without limitation - lost profits, lost savings, business interruption, costs related to the removal or replacement of any products or rework charges) whether or not such damages are based on tort (including negligence), warranty, breach of contract or any other legal theory.

Notwithstanding any damages that customer might incur for any reason whatsoever, NXP Semiconductors' aggregate and cumulative liability towards customer for the products described herein shall be limited in accordance with the *Terms and conditions of commercial sale* of NXP Semiconductors.

**Right to make changes** — NXP Semiconductors reserves the right to make changes to information published in this document, including without limitation specifications and product descriptions, at any time and without notice. This document supersedes and replaces all information supplied prior to the publication hereof.

**Suitability for use** — NXP Semiconductors products are not designed, authorized or warranted to be suitable for use in life support, life-critical or safety-critical systems or equipment, nor in applications where failure or

malfunction of an NXP Semiconductors product can reasonably be expected to result in personal injury, death or severe property or environmental damage. NXP Semiconductors accepts no liability for inclusion and/or use of NXP Semiconductors products in such equipment or applications and therefore such inclusion and/or use is at the customer's own risk.

**Applications** — Applications that are described herein for any of these products are for illustrative purposes only. NXP Semiconductors makes no representation or warranty that such applications will be suitable for the specified use without further testing or modification.

Customers are responsible for the design and operation of their applications and products using NXP Semiconductors products, and NXP Semiconductors accepts no liability for any assistance with applications or customer product design. It is customer's sole responsibility to determine whether the NXP Semiconductors product is suitable and fit for the customer's applications and products planned, as well as for the planned application and use of customer's third party customer(s). Customers should provide appropriate design and operating safeguards to minimize the risks associated with their applications and products.

NXP Semiconductors does not accept any liability related to any default, damage, costs or problem which is based on any weakness or default in the customer's applications or products, or the application or use by customer's third party customer(s). Customer is responsible for doing all necessary testing for the customer's applications and products using NXP Semiconductors products in order to avoid a default of the applications and the products or of the application or use by customer's third party customer(s). NXP does not accept any liability in this respect.

**Limiting values** — Stress above one or more limiting values (as defined in the Absolute Maximum Ratings System of IEC 60134) will cause permanent damage to the device. Limiting values are stress ratings only and (proper) operation of the device at these or any other conditions above those given in the Recommended operating conditions section (if present) or the Characteristics sections of this document is not warranted. Constant or repeated exposure to limiting values will permanently and irreversibly affect the quality and reliability of the device.

**Terms and conditions of commercial sale** — NXP Semiconductors products are sold subject to the general terms and conditions of commercial sale, as published at <http://www.nxp.com/profile/terms>, unless otherwise agreed in a valid written individual agreement. In case an individual agreement is concluded only the terms and conditions of the respective agreement shall apply. NXP Semiconductors hereby expressly objects to applying the customer's general terms and conditions with regard to the purchase of NXP Semiconductors products by customer.

**No offer to sell or license** — Nothing in this document may be interpreted or construed as an offer to sell products that is open for acceptance or the grant, conveyance or implication of any license under any copyrights, patents or other industrial or intellectual property rights.

**Export control** — This document as well as the item(s) described herein may be subject to export control regulations. Export might require a prior authorization from national authorities.

**Quick reference data** — The Quick reference data is an extract of the product data given in the Limiting values and Characteristics sections of this document, and as such is not complete, exhaustive or legally binding.

**Non-automotive qualified products** — Unless this data sheet expressly states that this specific NXP Semiconductors product is automotive qualified, the product is not suitable for automotive use. It is neither qualified nor tested in accordance with automotive testing or application requirements. NXP Semiconductors accepts no liability for inclusion and/or use of non-automotive qualified products in automotive equipment or applications.

In the event that customer uses the product for design-in and use in automotive applications to automotive specifications and standards, customer (a) shall use the product without NXP Semiconductors' warranty of the product for such automotive applications, use and specifications, and (b)

whenever customer uses the product for automotive applications beyond NXP Semiconductors' specifications such use shall be solely at customer's own risk, and (c) customer fully indemnifies NXP Semiconductors for any liability, damages or failed product claims resulting from customer design and use of the product for automotive applications beyond NXP Semiconductors' standard warranty and NXP Semiconductors' product specifications.

## 19.4 Trademarks

Notice: All referenced brands, product names, service names and trademarks are the property of their respective owners.

**I<sup>2</sup>C-bus** — logo is a trademark of NXP B.V.

## 20. Contact information

For more information, please visit: <http://www.nxp.com>

For sales office addresses, please send an email to: [salesaddresses@nxp.com](mailto:salesaddresses@nxp.com)

## 21. Contents

<b>1</b>	<b>Introduction</b>	<b>1</b>	10.4.1	Device control	27
<b>2</b>	<b>General description</b>	<b>1</b>	10.4.2	Serial interface control	28
<b>3</b>	<b>Features and benefits</b>	<b>1</b>	10.4.3	Equalizer configuration	30
3.1	General features	1	10.4.4	Bypass control	31
3.2	Programmable Digital Sound Processor (DSP)	2	10.4.5	Dynamic range compressor	31
3.3	Interface format support for digital audio inputs	2	10.4.6	Bass and treble control	32
<b>4</b>	<b>Applications</b>	<b>2</b>	10.4.7	High-pass filter	32
<b>5</b>	<b>Quick reference data</b>	<b>3</b>	10.4.8	Volume control	33
<b>6</b>	<b>Ordering information</b>	<b>3</b>	10.4.9	De-emphasis, soft/hard mute and power limiter	33
<b>7</b>	<b>Block diagram</b>	<b>4</b>	10.4.10	Miscellaneous status	34
<b>8</b>	<b>Pinning information</b>	<b>5</b>	<b>11</b>	<b>Internal circuitry</b>	<b>36</b>
8.1	Pinning	5	<b>12</b>	<b>Limiting values</b>	<b>37</b>
8.2	Pin description	5	<b>13</b>	<b>Thermal characteristics</b>	<b>38</b>
<b>9</b>	<b>Functional description</b>	<b>6</b>	<b>14</b>	<b>Characteristics</b>	<b>39</b>
9.1	Operating modes	7	14.1	DC Characteristics	39
9.1.1	Power-up/power-down	7	14.2	AC characteristics	40
9.1.2	Supported Digital audio data formats	8	14.3	I <sup>2</sup> C timing characteristics	41
9.2	Digital Signal Processor (DSP) features	11	14.4	I <sup>2</sup> S timing characteristics	42
9.2.1	Serial interface selection	11	14.5	PCM/IOM2 timing characteristics	43
9.2.2	Mono selection	11	<b>15</b>	<b>Application information</b>	<b>44</b>
9.2.3	Programmable high-pass filter	11	15.1	Power capability	44
9.2.4	De-emphasis	11	15.1.1	Estimating the RMS output power (P <sub>O(RMS)</sub> )	44
9.2.5	Equalizer	12	15.1.2	Output current limiting	45
9.2.5.1	Equalizer band function	12	15.2	PWM output filtering	45
9.2.5.2	Equalizer band control	14	15.3	Supply decoupling and filtering	45
9.2.6	Bass and treble control	16	15.4	PCB layout considerations	46
9.2.7	Muting	17	15.4.1	EMC considerations	46
9.2.8	Digital volume control	18	15.4.2	Thermal considerations	46
9.2.9	Zero-crossing volume control	18	15.5	Typical application diagram (simplified)	47
9.2.10	Dynamic Range Compressor (DRC)	18	15.6	Curves measured in reference design (demonstration board)	48
9.2.10.1	Functional description	19	<b>16</b>	<b>Package outline</b>	<b>53</b>
9.2.10.2	DRC control	19	<b>17</b>	<b>Soldering of SMD packages</b>	<b>54</b>
9.2.11	Power limiter	21	17.1	Introduction to soldering	54
9.3	Class-D amplification and clip control	22	17.2	Wave and reflow soldering	54
9.4	Protection	22	17.3	Wave soldering	54
9.4.1	OverTemperature Protection (OTP)	23	17.4	Reflow soldering	55
9.4.2	OverCurrent Protection (OCP)	23	<b>18</b>	<b>Revision history</b>	<b>57</b>
9.4.3	UnderFrequency Protection (UFP)	23	<b>19</b>	<b>Legal information</b>	<b>58</b>
9.4.4	OverFrequency Protection (OFP)	24	19.1	Data sheet status	58
9.4.5	Invalid Bit-clock Protection (IBP)	24	19.2	Definitions	58
9.4.6	Overview of protection circuits	24	19.3	Disclaimers	58
<b>10</b>	<b>I<sup>2</sup>C-bus interface and register settings</b>	<b>24</b>	19.4	Trademarks	59
10.1	I <sup>2</sup> C-bus interface	24	<b>20</b>	<b>Contact information</b>	<b>59</b>
10.2	I <sup>2</sup> C-bus write cycle	25	<b>21</b>	<b>Contents</b>	<b>60</b>
10.3	I <sup>2</sup> C-bus read cycle	26			
10.4	Top-level register map	26			

Please be aware that important notices concerning this document and the product(s) described herein, have been included in section 'Legal information'.

© NXP B.V. 2010.

All rights reserved.

For more information, please visit: <http://www.nxp.com>

For sales office addresses, please send an email to: [salesaddresses@nxp.com](mailto:salesaddresses@nxp.com)

Date of release: 15 October 2010

Document identifier: TFA9879