

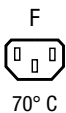
IEC Appliance Inlet C14, with modular extended Components

[查询"0001.2516"供应商](#)

Plug removal necessary for fuse replacement

6421.005X.XX  
Appliance inlet  
Appliance outlet6431.005X.XX  
Appliance inlet  
Switch  
Appliance outlet6432.0X5X.XX  
Appliance inlet  
Fuseholder  
Switch  
Appliance outlet

70° C



70° C

**Description**

- Panel Mount:  
Snap-in version from front side
- 2 - 4 Functions:  
Appliance Inlet Protection class I, Connector Protection class I, Line Switch 2-pole, Fuseholder for fuse-links 5 x 20 mm 1- or 2-pole
- Solder terminals 3.5 x 0.8 mm or quick connect terminals 6.3 x 0.8 mm
- Alternative: version with line filter [Felcom 54](#)

**Approvals**

- VDE License Number: 40028094
- UL License Number: E103791
- CSA License Number: 38456

**Characteristics**

- Modular component selection
- Individual components soldered on a printed circuit board
- Plug removal necessary for fuse-link replacement  
Fuse drawer meets requirements of medical standard IEC/EN 60601-1  
The fuseholder is accessible from the equipment front
- Fully insulated from the rear
- Qualified for use in equipment according IEC/EN 60950

**Other versions on request**

- Line switch with other rocker marking

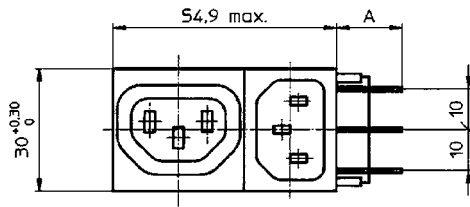
**References**[General Product Information](#)**Weblinks**[Approvals, RoHS, CHINA-RoHS, Mating Connectors, e-Store, Distributor-Stock-Check, Accessories](#)**Technical Data**

Ratings IEC	10 A / 250 VAC; 50 Hz
Ratings UL/CSA	10 A / 125/250 VAC; 60 Hz
Allowable Operation Temp.	-25 °C to 70 °C
Protection Class	Suitable for appliances with protection class 1 acc. to IEC 61140
Terminal	Solder terminals 3.5 x 0.8 mm or quick connect terminals 6.3 x 0.8 mm, tin-plated
Panel Thickness s	Snap-in: 1/1.2/1.5/2/2.5/3 mm
Material: Housing	Thermoplastic, black, UL 94V-0

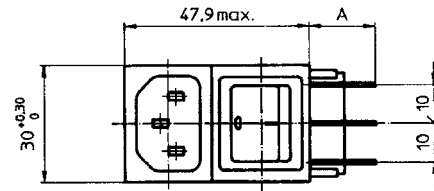
Appliance Inlet / Appliance Outlet	C14 acc. to IEC/EN 60320-1 and F acc. to IEC/EN 60320-2-2, UL 498, CSA C22.2 no. 42 (for cold conditions) pin-temperature 70 °C, 10 A, Protection Class 1
Fuseholder	1 or 2 pole, Shocksafe category PC2 acc. to IEC 60127-6, for fuse-links 5 x 20 mm
Rated Power Acceptance @ Ta 23 °C	5 x 20: 2 W (1 pole)/ 1.6 W (2-pole) per pole
Power Acceptance @ Ta > 23 °C	Admissible power acceptance at higher ambient temperature see derating curves
Line Switch	Rocker switch 2-pole, non-illuminated, IEC 61058-1 <a href="#">Technical details</a>

[查询"0001.2516"供应商](#)

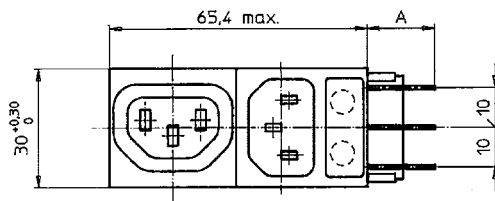
**Dimensions**



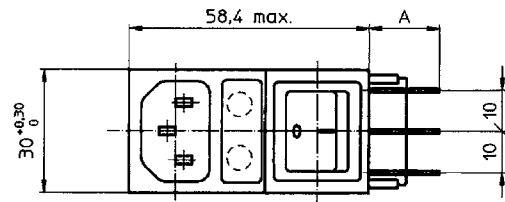
Variants 6421.005X.XX  
Mounting hole: 53.6+0,2 x 27.6+0,2



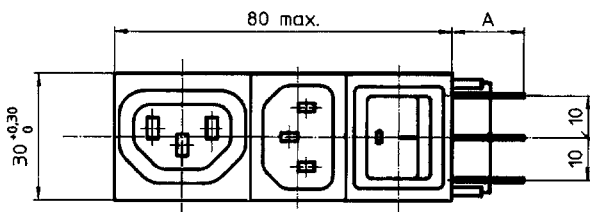
Variants 6422.005X.XX  
Mounting hole: 46.7+0,2 x 27.6+0,2



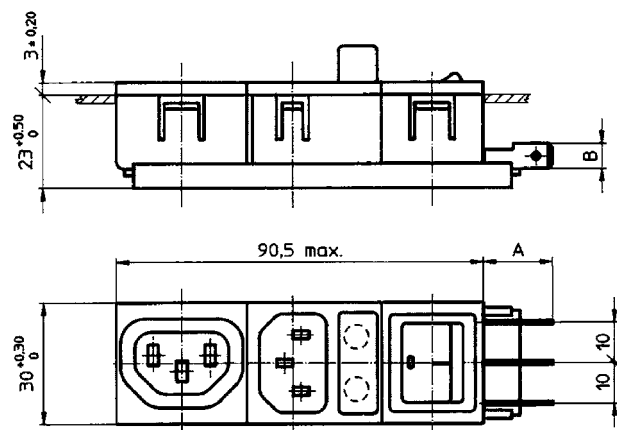
Variants 6423.0X5X.XX  
Mounting hole: 65.5+0,2 x 27.6+0,2



Variants 6424.0X5X.XX  
Mounting hole: 57+0,2 x 27.6+0,2



Variants 6431.005X.XX  
Mounting hole: 80.1+0,2 x 27.6+0,2

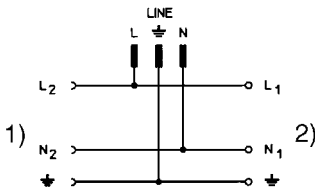


Variants 6432.0X5X.XX  
Mounting hole: 90.6+0,2 x 27.6+0,2

查询"0001.2516"供应商

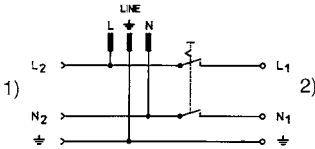
Diagrams

6421



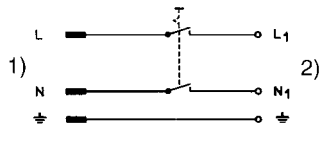
1) Load 2  
2) Load 1

6431



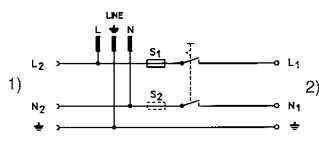
1) Load 2  
2) Load 1

6422



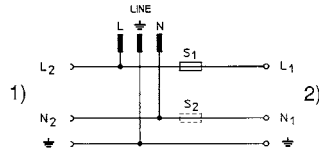
1) Line  
2) Load 1

6432



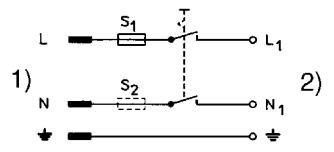
1) Load 2  
2) Load 1

6423



1) Load 2  
2) Load 1

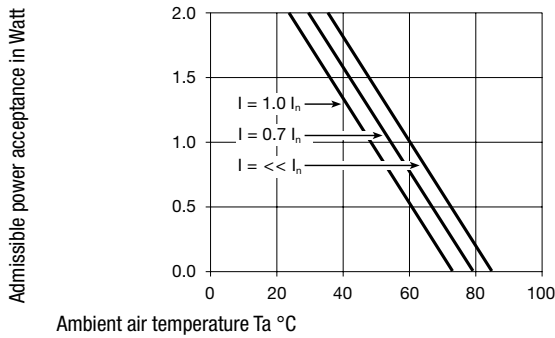
6424



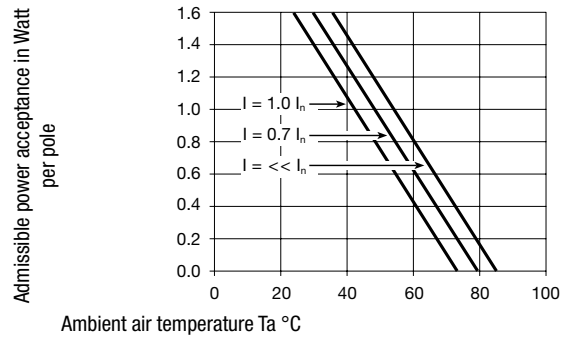
1) Line  
2) Load 1

Derating Curves

1-pole



2-pole



Ordering instructions

64 XX .0X5X.XX

"Snap-in" panel thickness

- 10 = 1,0 mm
- 12 = 1,2 mm
- 15 = 1,5 mm
- 20 = 2,0 mm
- 25 = 2,5 mm
- 30 = 3,0 mm

Connection

- 51 = solder terminals 3,5 x 0,8 mm
- 53 = quick connect terminals 6,3 x 0,8 mm

Fuseholder 5 x 20 mm

- 00 = without fuseholder
- 01 = 1-pole
- 02 = 2-pole

Module combination

- 21 = Appliance inlet, outlet
- 22 = Appliance inlet, switch
- 23 = Appliance inlet, fuseholder, outlet
- 24 = Appliance inlet, fuseholder, switch
- 31 = Appliance inlet, outlet, switch
- 32 = Appliance inlet, fuseholder, outlet, switch

Base model

Packaging unit

10 Pcs

Accessories [查询"0001.2516"供应商](#)

Description



[Cord retaining kits](#)  
Cord retaining strain relief

Flat head, A	4700.0001
Flat head, E	4700.0005
Flat head, G	4700.0007

## Mating Inlets/Plugs

Category / Description

[Interconnection Cord Overview complete](#)



Interconnection Cord with IEC Plug E, Angled	0607
Interconnection Cord with IEC Plug E, Angled	0608
Interconnection Cord with IEC Plug E, Straight	0609
Interconnection Cord with IEC Plug G, Angled	607B
Interconnection Cord with IEC Plug G, Angled	608B

[Interconnection Cord further types to Felcom 64](#)

...

[Plug Overview complete](#)



IEC Plug E, Cord Connector (Rewireable), Straight, max. cable Diameter 8.5 mm	4732
IEC Plug E, Cord Connector (Rewireable), Angled, max. Cable Diameter 10 mm	4733
IEC Plug E, Cord Connector (Rewireable), Straight, max. Cable Diameter 10 mm	4735
IEC Plug E, Cord Connector (Rewireable), Angled, max. Cable Diameter 10 mm	4736
IEC Plug E, Cord Connector (Rewireable), Straight	9009

[Plug further types to Felcom 64](#)

...

## Mating Outlets/Connectors

[Appliance Outlet Overview complete](#)



IEC Appliance Outlet F, Screw-on Mounting, Front Side, Solder or Quick-connect Terminal	4787
IEC Appliance Outlet F, Snap-in Mounting, Front Side, Solder or Quick-connect Terminal	4788
IEC Appliance Outlet F or H, Screw-on Mounting, Front Side, Solder, PCB or Quick-connect Terminal	5091
IEC Appliance Outlet F or H, Screw-on Mounting, Front Side, Solder or Quick-connect Terminal	5092

[Appliance Outlet further types to Felcom 64](#)

[Connector Overview complete](#)



IEC Connector C15, Rewireable, Straight	0101
IEC Connector C15A, Rewireable, Straight	0102
IEC Connector C15A, Rewireable, Straight	0102-G
IEC Connector C15A, Rewireable, Angled	0112
IEC Connector C13, Rewireable, Angled	4012

[Connector further types to Felcom 64](#)

...

[Power Cord Overview complete](#)



Power Cord with IEC Connector C13, Angled	0311
Power Cord with IEC Connector C13, Angled	3011
Power Cord with IEC Connector C13, Angled	3012
Power Cord with IEC Connector C13, Angled	3013
Power Cord with IEC Connector C13	3020

[Power Cord further types to Felcom 64](#)

...

[Power Supply or Interconnection Cord Overview complete](#)

Divers Power Supply and Interconnection Cords 10 A	Kabelverbindung/10 A
--	----------------------

[Power Supply or Interconnection Cord further types to Felcom 64](#)

[查询"0001.2516"供应商](#)