

IEC Appliance Inlet C20, Screw-on Mounting, Front Side, Solder or Quick-connect Terminal

[查询 4798 供应商](#)

4798

C20



70 °C

**Description**

- Panel Mount:
Screw-on mounting from front side
- Appliance Inlet, Pin temperature 70 °C, Protection class I
- Solder terminals or quick connect terminals

Approvals

- VDE License Number: 40020659
- UL License Number: E96454
- CSA License Number: 56242

Other versions on request

- Types for enhanced glow wire test requirements acc. IEC 60695-2-11 to -13 for the use in unattended household equipment acc. IEC 60335-1

References[General Product Information](#)**Weblinks**

[Approvals](#), [RoHS](#), [CHINA-RoHS](#), [Mating Connectors](#), [e-Store](#), [SCHURTER-Stock-Check](#), [Distributor-Stock-Check](#)

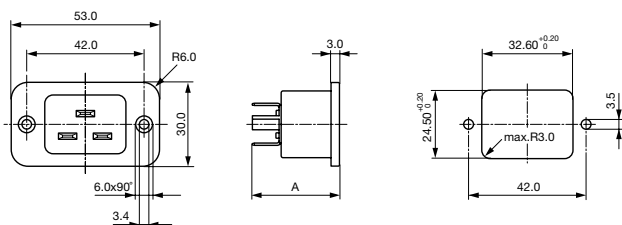
Technical Data

Ratings IEC	16 A / 250 VAC; 50 Hz
Ratings UL/CSA	20 A / 250 VAC; 60 Hz
Dielectric Strength	> 2.2 kVAC between L-N > 4 kVAC between L/N-PE (1 min/50 Hz)
Allowable Operation Temp.	-25 °C to 70 °C
Degree of Protection	from front side IP 40 acc. to IEC 60529
Protection Class	Suitable for appliances with protection class 1 acc. to IEC 61140
Terminal	Solder terminals or quick connect terminals
Panel Thickness s	Screw: max 8 mm Mounting screw torque max 0.5 Nm
Material: Housing	Thermoplastic, black, UL 94V-0

Appliance Inlet	C20 acc. to IEC/EN 60320-1, UL 498, CSA C22.2 no. 42 (for cold conditions) pin-temperature 70 °C, 16 A, Protection Class 1
-----------------	---

Dimensions

4798



A = 31.5 mm: quick-connect terminals 6.3 x 0.8 mm
 A = 30 mm: quick-connect terminals 4.8 x 0.8 mm
 A = 28.5 mm: solder terminals

[Distributor-Stock-Check](#) | [SCHURTER-Stock-Check](#) | [e-Store](#)

Variant [查询"4798"供应商](#)[Distributor-Stock-Check](#) | [SCHURTER-Stock-Check](#) | [e-Store](#)

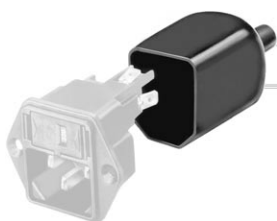
Panel mounting	Panel Thickness s [mm]	Terminal	Order Number
Screw	-	Quick connect terminals 4.8 x 0.8 mm	4798.9100
Screw	-	Quick connect terminals 6.3 x 0.8 mm	4798.9000
Screw	-	Solder terminals	4798.9200

Articles for enhanced glow wire test requirements acc. IEC 60695-2-11 to -13 can be ordered with ending ".15" (xxx.xxx.15). They are suitable for the use in unattended household equipment acc. IEC 60335-1.

Packaging unit 100 Pcs

Accessories

Description



[Assorted Covers](#)
Rear Cover

0859.0047



[Cord retaining kits](#)
Cord retaining strain relief

Countersunk, K

4700.0010

Mating Outlets/Connectors

Category / Description

[Connector Overview complete](#)

IEC Connector C19, Rewireable, Straight
IEC Connector C19, Rewireable, Angled
IEC Connector C19, Rewireable, Straight
IEC Connector C19, Rewireable, Angled
IEC Connector C19, Rewireable, Straight

0104
1651
1652
4790
4795

[Connector further types to 4798](#)[Power Cord Overview complete](#)

Power Cord with IEC Connector C19, Straight

1654

[Power Cord further types to 4798](#)[Power Supply or Interconnection Cord Overview complete](#)

Divers Power Supply and Interconnection Cords 16 A

[Kabelverbindung/16 A](#)[Power Supply or Interconnection Cord further types to 4798](#)