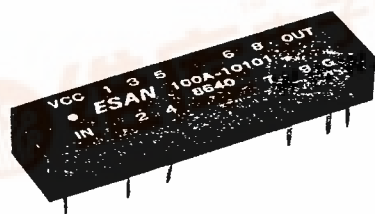


- Industry Standard
- 10 Tap Output
- 30 Pin Dip Package

[查询 100A10101 供应商](#)



Specifications:

- Delay tolerance : $\pm 5\%$ or 2ns whichever is greater
- Rise time : 4ns max.
- Temp. coefficient : 100 ppm/ $^{\circ}\text{C}$ (-55°C to $+125^{\circ}\text{C}$ on request)
- Operating Temp. Range : -0°C to 70°C
- Minimum Pulse Width : 40% of total delay
- Supply Voltage : $5\text{V}_{\text{DC}} \pm 5\%$
- Logic 1 Input current : 50 μA max.
- Logic 0 Input current : -2 mA max.
- Logic 1 Output : 2.75V min
- Logic 0 Output : 0.4V max.
- Logic 1 Fan out : 20/TAP max.
- Logic 0 Fan out : 10/TAP max.
- Power Dissipation : 375 mW max.

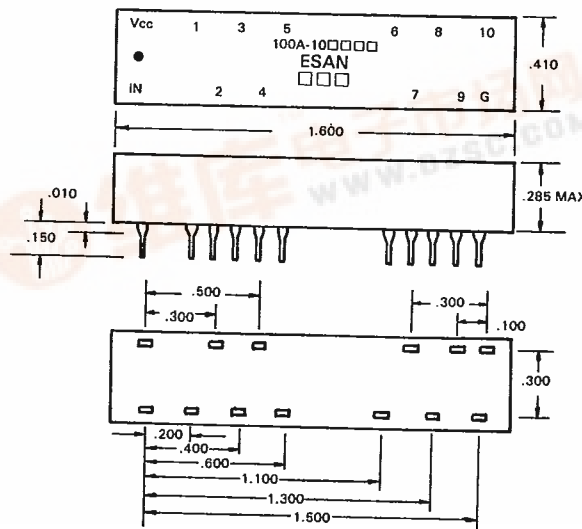
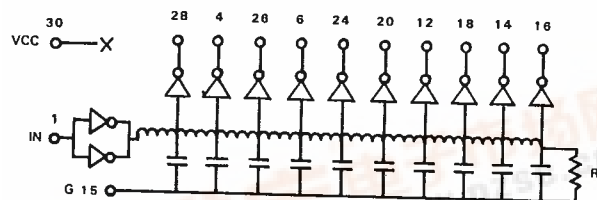
Test Conditions:

- Input pulse voltage : 3.2V
- Input pulse width : $1.2 \times$ total delay
- Input pulse spacing : $2 \times$ total delay
- Input pulse rise time : 2 ns
- Rise time : 0.75V to 2.4V
- Time delay measured : @1.5V level
- All measurement : @ $V_{\text{CC}} = 5.0\text{V}$, $T_A = 25^{\circ}\text{C}$

Features:

- Schottky TTL interface
- Low power schottky available named "100AL-10xxx" series
- Both Leading and Trailing edge available under request named "100B-10xxx" series
- Ceramic IC meet MIL-STD 883 level B available named "100AM-10xxx" series

PART NO.	TOTAL DELAY (ns)	TAP DELAY (ns)
100A-10500	50	5
100A-10101	100	10
100A-10151	150	15
100A-10201	200	20
100A-10251	250	25
100A-10301	300	30
100A-10351	350	35
100A-10401	400	40
100A-10451	450	45
100A-10501	500	50



Unit: Inch

