

**Type: CDRH2D13**

**SONY USE ONLY**

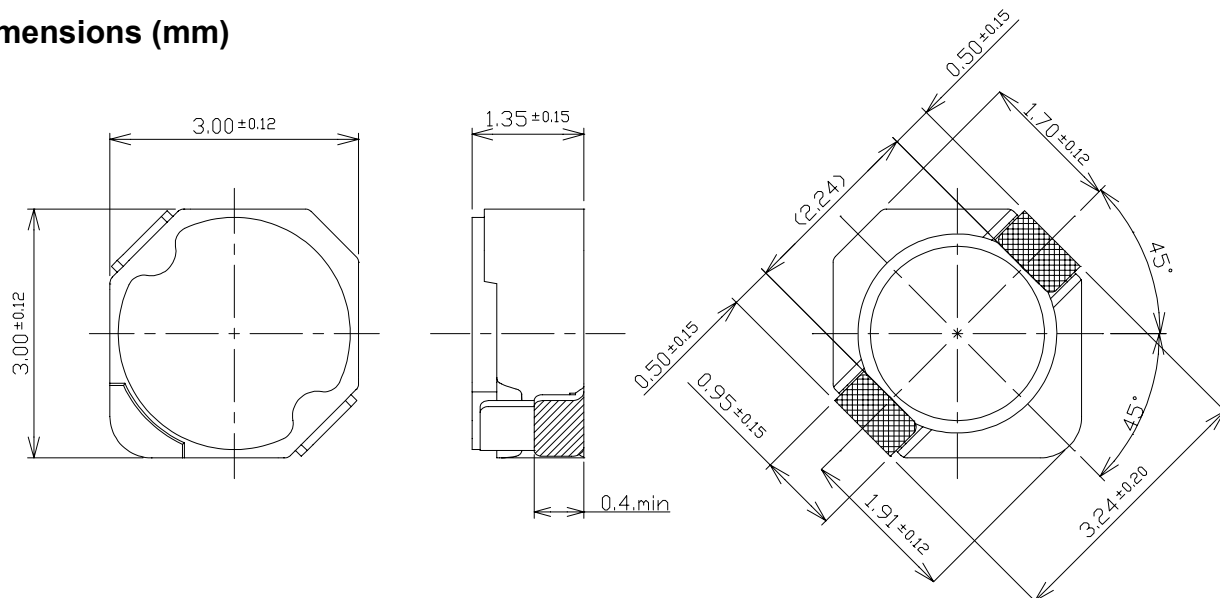
◆ **Product Description**

- 3.12×3.12mm Max.(L×W), 1.5mm Max.Height.
- Inductance Range: 4.7  $\mu$  H.
- Rated current range: 0.92 A.

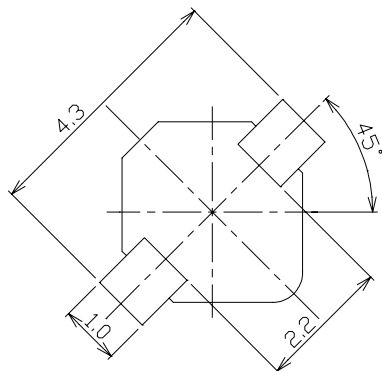
◆ **Feature**

- Magnetically shielded construction.
- Ideally used in Mobilephone, PDA, MP3, DSC/DVC, etc as DC-DC Converter inductors.
- RoHS Compliance.

◆ **Dimensions (mm)**



◆ **Land Pattern (mm)**



**Type: CDRH2D13**

◆ **Specification**

Part Name ※	Stamp	Inductance ( $\mu$ H) [Within] 100kHz/1V	D.C.R.(m $\Omega$ ) Max.(Typ.) (at 20°C)	Saturation current (A) ※ 1	Temperature rise current (A)※2
CDRH2D13NP-4R7M□	A	4.7 $\pm$ 20%	126(105)	0.92	1.00

※ **Description of part Name**

CDRH2D13NP-4R7M□

— B Box  
 — C Carrier Tape

※1.Saturation Current: The DC current at which the inductance decreases to 70% of it's nominal value.(Ta=20°C)

※2 Temperature rise current: The DC current at which the temperature rise is  $\Delta t=40^{\circ}\text{C}$ .(Ta=20°C)

**SONY USE ONLY**