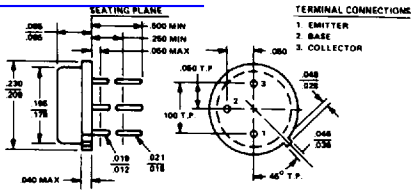


查询"2N3752"供应商 COLLECTOR CURRENT = 5 AMPS NPN TYPES—Continued

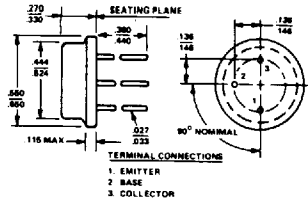
Device No	Case	VCBO Volts	VCEO (sus) Volts	VEBO Volts	h _{FE}		VCE	IC	VCE (sat)	VBE (sat)	@ IC	@ IB	θ _{JC} °C/W	F _t MHz
					Min	Max								
2N3751	TO-111/I	80	60	8	100	300	5	1	.25	1.2	1	.1	3.33	60
2N3752	TO-111/I	100	80	8	100	300	5	1	.25	1.2	1	.1	3.33	60
2N3850	TO-111	100	80	5	50	150	1	1	.5	1.3	2	.2	3.33	60
2N3851	TO-111	100	80	5	30	90	1	1	.5	1.3	2	.2	3.33	60
2N3852	TO-111	60	40	5	50	150	1	1	.5	1.3	2	.2	3.33	60
2N3853	TO-111	60	40	5	30	90	1	1	.5	1.3	2	.2	3.33	60
2N3928	TO-5	80	40	4	40	150	5	1	.5	1.25	1	.1	25	60
2N3929	TO-111	80	40	4	40	150	5	1	.5	1.25	1	.1	3.33	60
2N3996	TO-111/I	100	80	8	40	120	2	1	.25	1.6	1	.1	3.33	60
JAN 2N3996	TO-111/I	100	80	8	40	120	2	1	.25	1.6	1	.1	3.33	60
JTX 2N3996	TO-111/I	100	80	8	40	120	2	1	.25	1.6	1	.1	3.33	60
JTXV 2N3996	TO-111/I	100	80	8	40	120	2	1	.25	1.6	1	.1	3.33	60
2N3997	TO-111/I	100	80	8	80	240	2	1	.25	1.6	1	.1	3.33	60
JAN 2N3997	TO-111/I	100	80	8	80	240	2	1	.25	1.6	1	.1	3.33	60
JTX 2N3997	TO-111/I	100	80	8	80	240	2	1	.25	1.6	1	.1	3.33	60
JTXV 2N3997	TO-111/I	100	80	8	80	240	2	1	.25	1.6	1	.1	3.33	60
2N3998	TO-111	100	80	8	40	120	2	1	.25	1.6	1	.1	3.33	60
JAN 2N3998	TO-111	100	80	8	40	120	2	1	.25	1.6	1	.1	3.33	60
JTX 2N3998	TO-111	100	80	8	40	120	2	1	.25	1.6	1	.1	3.33	60
JTXV 2N3998	TO-111	100	80	8	40	120	2	1	.25	1.6	1	.1	3.33	60
2N3999	TO-111	100	80	8	80	240	2	1	.25	1.6	1	.1	3.33	60
JAN 2N3999	TO-111	100	80	8	80	240	2	1	.25	1.6	1	.1	3.33	60
JTX 2N3999	TO-111	100	80	8	80	240	2	1	.25	1.6	1	.1	3.33	60
JTXV 2N3999	TO-111	100	80	8	80	240	2	1	.25	1.6	1	.1	3.33	60
2N4111	TO-3	100	60	8	40	120	5	2	1.5	2.2	5	.5	1.5	70
2N4112	TO-3	100	60	8	100	300	5	2	1.5	2.2	5	.5	1.5	80
2N4113	TO-3	120	80	8	40	120	5	2	1.5	2.2	5	.5	1.5	70
2N4114	TO-3	120	80	8	100	300	5	2	1.5	2.2	5	.5	1.5	80
2N4115	TO-111/I	120	80	8	40	120	5	2	.6	1.3	2	.2	3.33	70
2N4116	TO-111/I	120	80	8	100	300	5	2	.6	1.3	2	.2	3.33	70
2N4231	TO-66	40	40	5	25	100	2	1.5	.7	1.4	1.5	.15	5	60
2N4232	TO-66	60	60	5	25	100	2	1.5	.7	1.4	1.5	.15	5	60
2N4233	TO-66	80	80	5	25	100	2	1.5	.7	1.4	1.5	.15	5	60
2N4300	TO-5	100	80	8	30	120	2	1	.5	1.2	2	.2	25	60
2N4305	TO-5	120	80	6	50	150	2	1	1	1.5	5	.5	25	60
2N4307	TO-5	100	60	6	50	150	2	1	1	1.5	5	.5	25	60
2N4309	TO-5	120	80	6	50	150	2	1	1.4	1.8	5	.5	25	60
2N4311	TO-5	100	60	6	40	120	2	1	1.4	1.8	5	.5	25	60
2N4895	TO-5	120	60	6	40	120	2	2	1	1.6	5	.5	25	50
2N4896	TO-5	120	60	6	100	300	2	2	1	1.6	5	.5	25	80
2N4897	TO-5	150	80	6	40	120	2	2	1	1.6	5	.5	25	50
2N4915	TO-3	80	80	5	25	100	2	2.5	.75	1.5	2.5	.25	2	4
2N4998	TO-111/I	100	80	6	30	90	5	1	.85	1.5	2	.2	3.33	60
2N5000	TO-111/I	100	80	6	70	200	5	1	.85	1.5	2	.2	3.33	60

PHYSICAL DIMENSIONS - PACKAGES

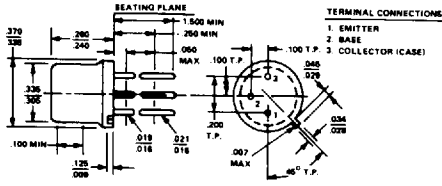
[查询"2N3752"供应商](#)



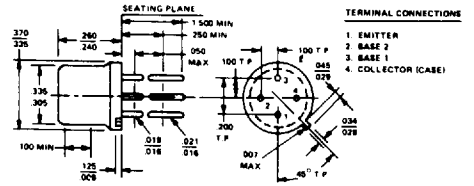
TO-46



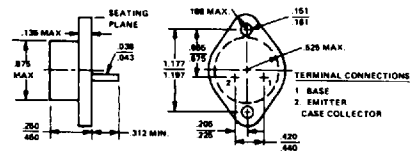
TO-8



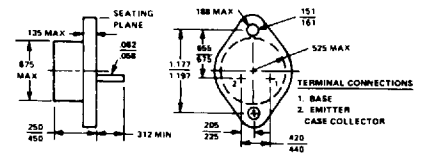
TO-5



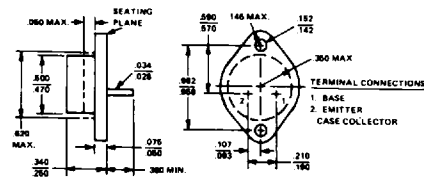
TO-33



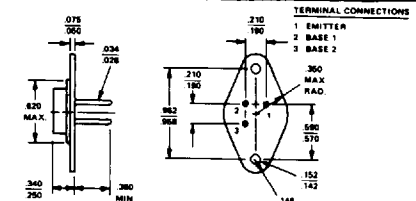
TO-3



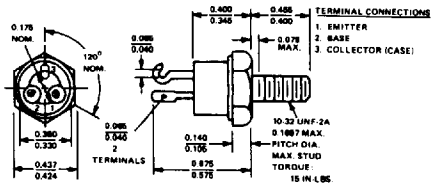
TO-3 (60 mil pins)



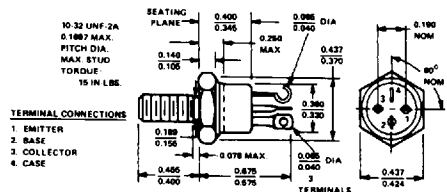
TO-66



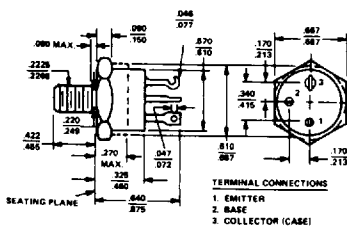
3 PIN TO-66



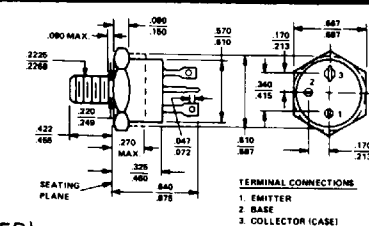
TO-111



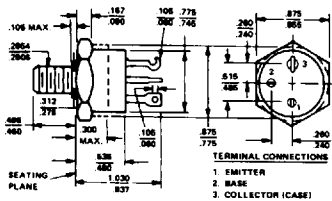
TO-111 (ISOLATED)



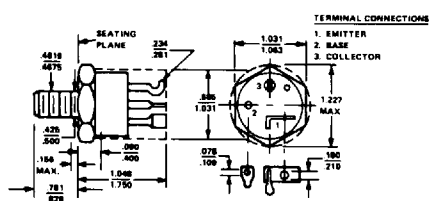
TO-61



TO-61 (ISOLATED)



TO-63



TO-114

ALL DIMENSIONS IN INCHES