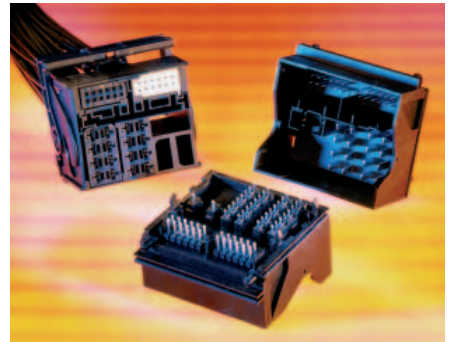




## 2.54 mm (.100") Pitch

### MOST Receptacle Housing with Connectors and Cable Cover

**98681 – Frame Receptacle**  
**98684 – Receptacle Housing**  
**98685 – Power Connector**  
**98660 – Cable Cover**



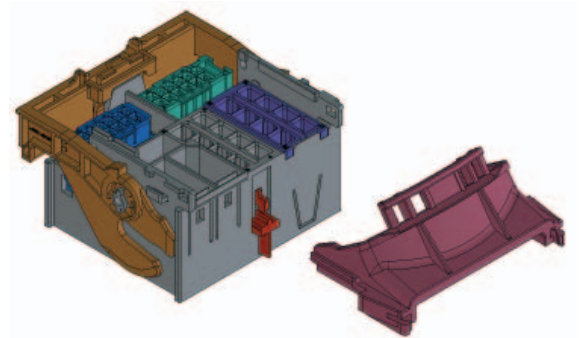
MOST stands for Media Oriented System Transport. The MOST frame receptacle connector on the wire harness side offers the terminal cavities for Molex 0.635 mm MOX terminals and for 2.80 mm Tyco MPQ terminals. The MOST receptacle 98681 can be populated up to 44 circuits, 40 electrical and 4 optical. Please be informed that Molex does not offer the terminals for the 4 plastic optical fibre options. 8 terminal cavities are molded with the MOST receptacle connector frame. The other terminals fit into 3 separate plastic housings clipping into the frame. The part numbers are 98685-1001, 98684-0001 and 98684-0002. A strain relief cover is available; part number is 98660-0001.

The MOST Receptacle Housing 98684 offers 12 terminal cavities for our 0.64 mm MOX terminals (98658). The terminal position assurance is molded as one piece housing with hinge. There are two keyings available with difference in color. These keyings correlate to the two openings in MOST Master Frame.

The MOST Power Connector 98685 is designed with 8 terminal cavities for 2.80 mm Tyco MPQ terminals. The terminal position assurance is pre-assembled in pre-locking position.

#### Features and Benefits

- MOST corporation interface meets MOST specification
- Drop in replacement for competitor parts
- Offers integrated 4 Plastic Optical Fibre slots, but Molex does not offer the POF connector
- Lead free product and lead free process capable
- Color coding and mechanical keying at 98684-series
- Strain Relief cable cover enables right angle wire output and strain relief when wrapped with cable tie



#### SPECIFICATIONS

##### Reference Information

Mates With: 98684-0001, 98684-0002,  
 98685-1001, 91500/91547  
 Designed In: Millimeters

##### Electrical

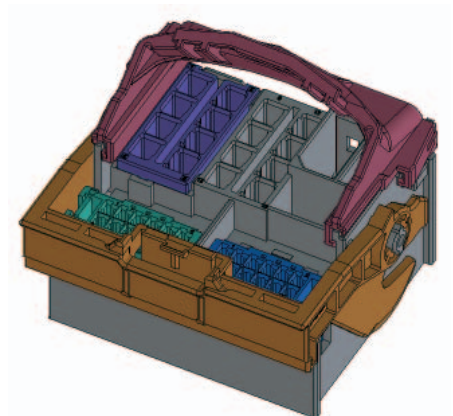
Voltage: 9 V to 16 V  
 Current: 7.5 A/24 A  
 Contact Resistance: <5 mOhm  
 Insulation Resistance: 200 MOhm at 500 V DC

##### Mechanical

All according to USCAR  
 Contact Insertion Force:  
 <1 mm<sup>2</sup> <15N  
 >1 mm<sup>2</sup> <30N  
 Contact Retention to Housing:  
 primary lock >60N  
 secondary lock >90N  
 Mating Force: 75N max.  
 Unmating Force: 75N max.

##### Physical

Housing: SPS/PA66 20% Glassfill  
 Contact: see specification of MOX or Tyco MPQ terminals  
 Plating: see specification of MOX or Tyco MPQ terminals  
 Operating Temperature: -40 to 85 °C

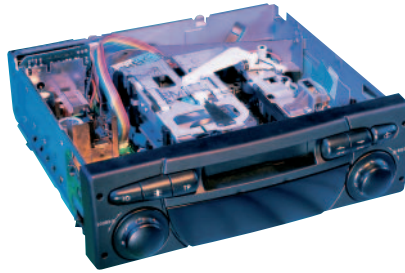




2.54 mm (.100") Pitch

**MOST Receptacle Housing with Connectors and Cable Cover**

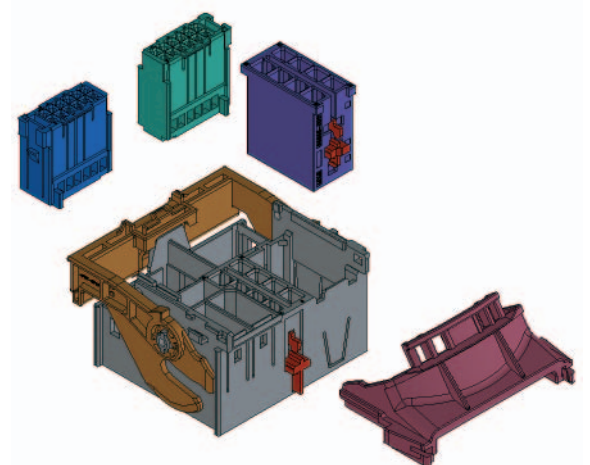
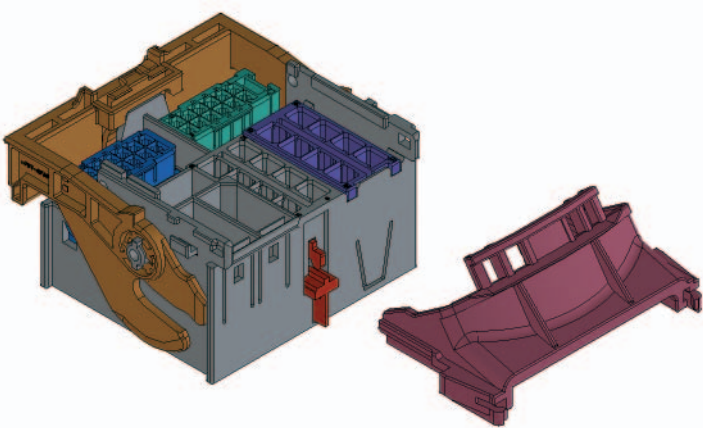
- Consumer Automotive
  - Car Stereo
  - Navigation Systems
- Transport Non-Automotive (Trucks, Bus, Agriculture Equipment, etc.)
  - Audio System
  - Navigation System
- Marine Radio



- 98681 – Frame Receptacle
- 98684 – Receptacle Housing
- 98685 – Power Connector
- 98660 – Cable Cover

**ORDERING INFORMATION**

Order No.	Description
98681-1001	MOST Frame Receptacle Housing, 40 electrical and 4 optical Circuits, Black, with strain relief option
98681-1002	MOST Frame Receptacle Housing, 44 Circuits, Black, w/o strain relief option
98684-0001	MOST Receptacle Housing for 0.64 mm Terminals, TPA, Key A, Black, 12 Circuits
98684-0002	MOST Receptacle Housing for 0.64 mm Terminals, TPA, Key B, Natural, 12 Circuits
98685-1001	MOST Receptacle Power Connector for 2.80 mm Terminals, with TPA, Black, 8 Circuits
98660-0001	MOST Strain Relief Cable Cover



**Americas Headquarters**  
 Lisle, Illinois 60532 U.S.A.  
 1-800-78MOLEX  
 amerinfo@molex.com

**Far East North Headquarters**  
 Yamato, Kanagawa, Japan  
 81-462-65-2324  
 feninfo@molex.com

**Far East South Headquarters**  
 Jurong, Singapore  
 65-6-268-6868  
 fesinfo@molex.com

**European Headquarters**  
 Munich, Germany  
 49-89-413092-0  
 eurinfo@molex.com

**Corporate Headquarters**  
 2222 Wellington Ct.  
 Lisle, IL 60532 U.S.A.  
 630-969-4550  
 Fax:630-969-1352