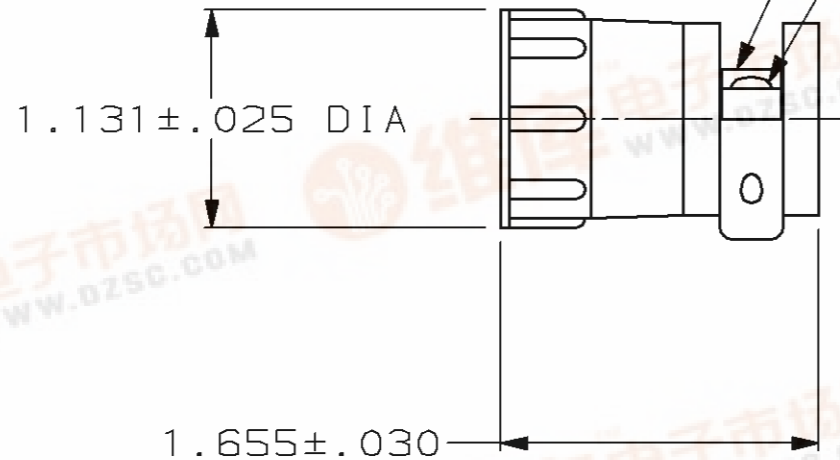


THIS DRAWING IS UNPUBLISHED. RELEASED FOR PUBLICATION ,19 .
 © COPYRIGHT 19 BY AMP INCORPORATED. ALL INTERNATIONAL RIGHTS RESERVED.

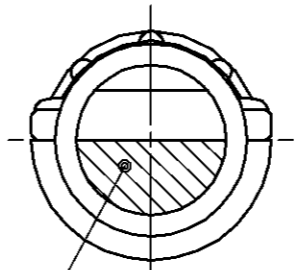
[查询"206322-1"供应商](#)

LOC	DIST	P	F	ZONE	LTR	DESCRIPTION	DATE	APPD
BD	35				H	REDRAWN	4/23/91	-
					J	REV PER ECN BD6815	10/16/92	KB
					J1	ADDED -5 NPR 4832	07/06/93	AF
					K	OBSOLETE -4 PER EC 0020-1564-93	08/10/94	AF
					L	ADDED -6 PER EC 0020-1296-95	17 NOV 95	RB



CLAMPING INSERT

(2) #5-20 SELF-TAPPING SCREWS,
 SOLID OR SLOTTED SHANK.
 MATERIAL: ZINC PLATED STEEL
 LENGTH: 206322-1 THRU -5, .625.
 206322-6, .500.



CLAMPING AREA SHADED

- PARTS PACKAGED UNASSEMBLED.
- CABLE CLAMPING AREA ADJUSTABLE FROM .100 TO .410 SQ IN BY REVERSING CLAMPING INSERTS. (2 INSERTS SUPPLIED, -1 AND -2 ONLY)
- CABLE CLAMPING AREA ADJUSTABLE FROM .100 TO .410 SQ IN BY CHANGING CLAMPING INSERTS. (4 INSERTS SUPPLIED, -4 ONLY)
- .703 MAXIMUM CABLE OUTSIDE DIAMETER.
- BULK PACKAGED KITS TO BE ORDERED IN MULTIPLES OF 100 ONLY.

OBSOLETE	5 BULK	206322-6
	SMALL PACK	206322-5
	INDIVIDUAL	206322-4
	5 BULK	206322-2
	INDIVIDUAL	206322-1
	PACKAGING	PART NUMBER

DO NOT SCALE PRINT. UNLESS SPECIFIED DIMENSIONS IN INCHES TOLERANCES ON: 2 PLC DEC ± - 3 PLC DEC ± - ANGLES ± -	DR 4/23/91 A GRAFF	AMP AMP Incorporated Harrisburg, PA 17105-3608		
	CHK 7-22-92 W.G. LENKER			
	MATERIAL THERMOPLASTIC, BLACK	APPD 7-22-92 K. BEAVER	NAME CABLE CLAMP KIT, LARGE, SHELL SIZE 17, CPC	
	FINISH -	APPD 7-22-92 C. ROHDE		
	PRODUCT SPEC 108-10024	SIZE B	CAGE CODE 00779	DRAWING NO 206322
	APPLICATION SPEC -	SCALE 1:1	SHEET 1 OF 1	
	WEIGHT -			

CUSTOMER DRAWING

