

### FEATURES

- 2-way and 3-way configurations
- Performs at high speed (opening response time  $\leq 5$  ms)
- Leak-tight to  $1 \times 10^{-8}$  cm<sup>3</sup>/s/atm Helium
- Provides ultra-high vacuum and high pressure
- Constructed of non-corrosive stainless steel
- Offers a variety of porting options
- Offers a high cycle life



### MEDIA COMPATIBILITY

Liquids and gases

### WETTED MATERIALS

**Materials contacting media:**

PTFE, stainless steel, body, seals

**Body:**

316L stainless steel

**Seals:**

Vespel & silver-plated nickel gasket, FKM & silver-plated nickel gasket

### ELECTRICAL

Power 12 W

Voltage 12, 24 V<sub>DC</sub>

Current/Resistance ( $\Omega \pm 5\%$  @ 21 °C)

12 V<sub>DC</sub> 1000 mA/12  $\Omega$

24 V<sub>DC</sub> 500 mA/48  $\Omega$

### PHYSICAL PROPERTIES

Operating environment 4 to 105 °C

Weight (e.g. 3-way, 1/8" body) 88 g

Porting Vacuum fittings; A-Lok compression fittings

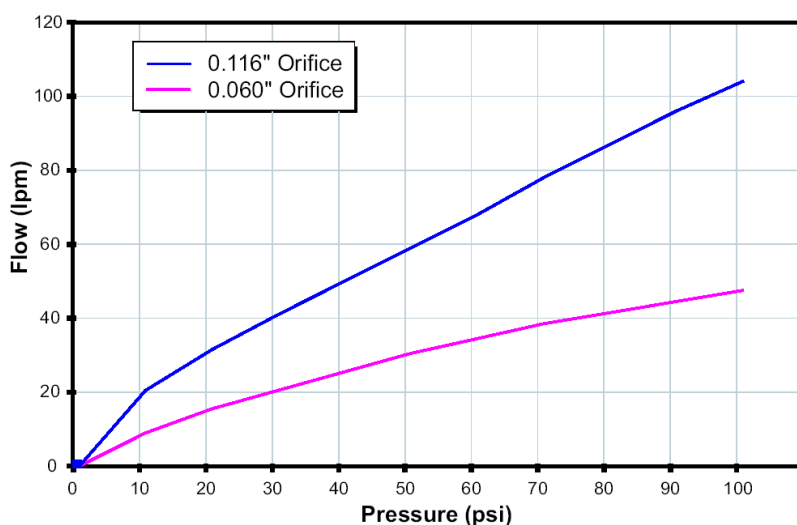
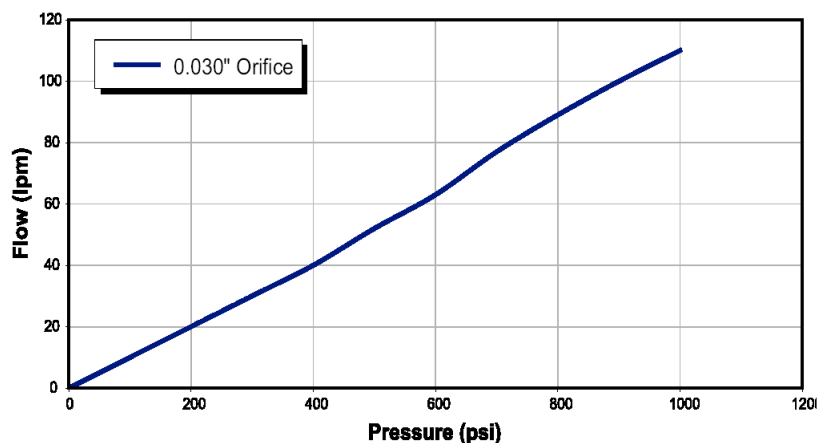
Internal volume various

**PERFORMANCE CHARACTERISTICS**

Part no.	Pressure	Orifice sizes	Leak rate*
See Ordering Information	Vacuum...86 bar (1250 psi)	0.030" (0.76 mm)	1 x 10 <sup>-8</sup> cm <sup>3</sup> /s/atm Helium
	Vacuum...17 bar (250 psi)	0.060" (1.52 mm)	
	Vacuum...7 bar (100 psi)	0.116" (2.99 mm)	

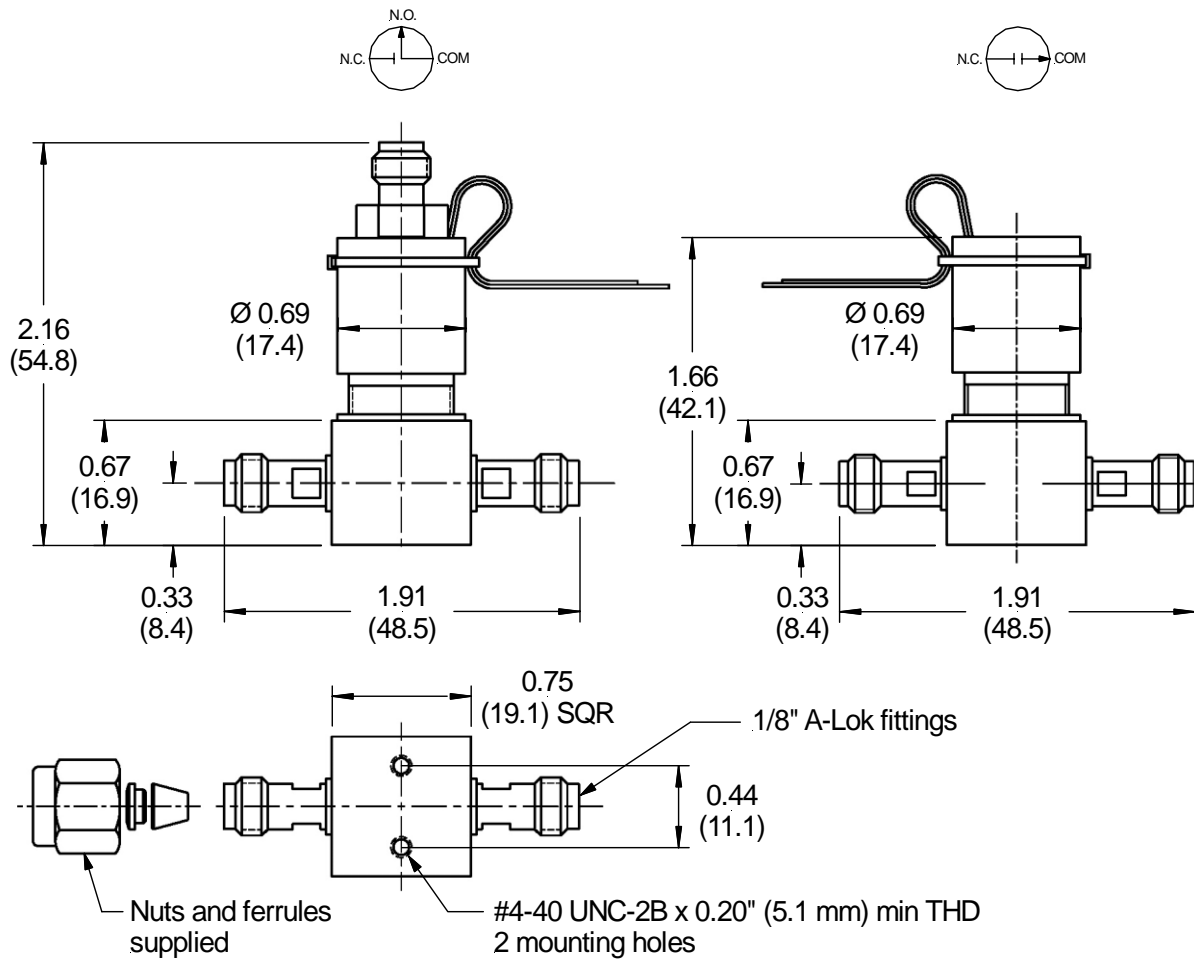
\* Not rated for continuous duty at maximum temperature.

**FLOW CURVES (typical air flow)**



### OUTLINE DRAWING

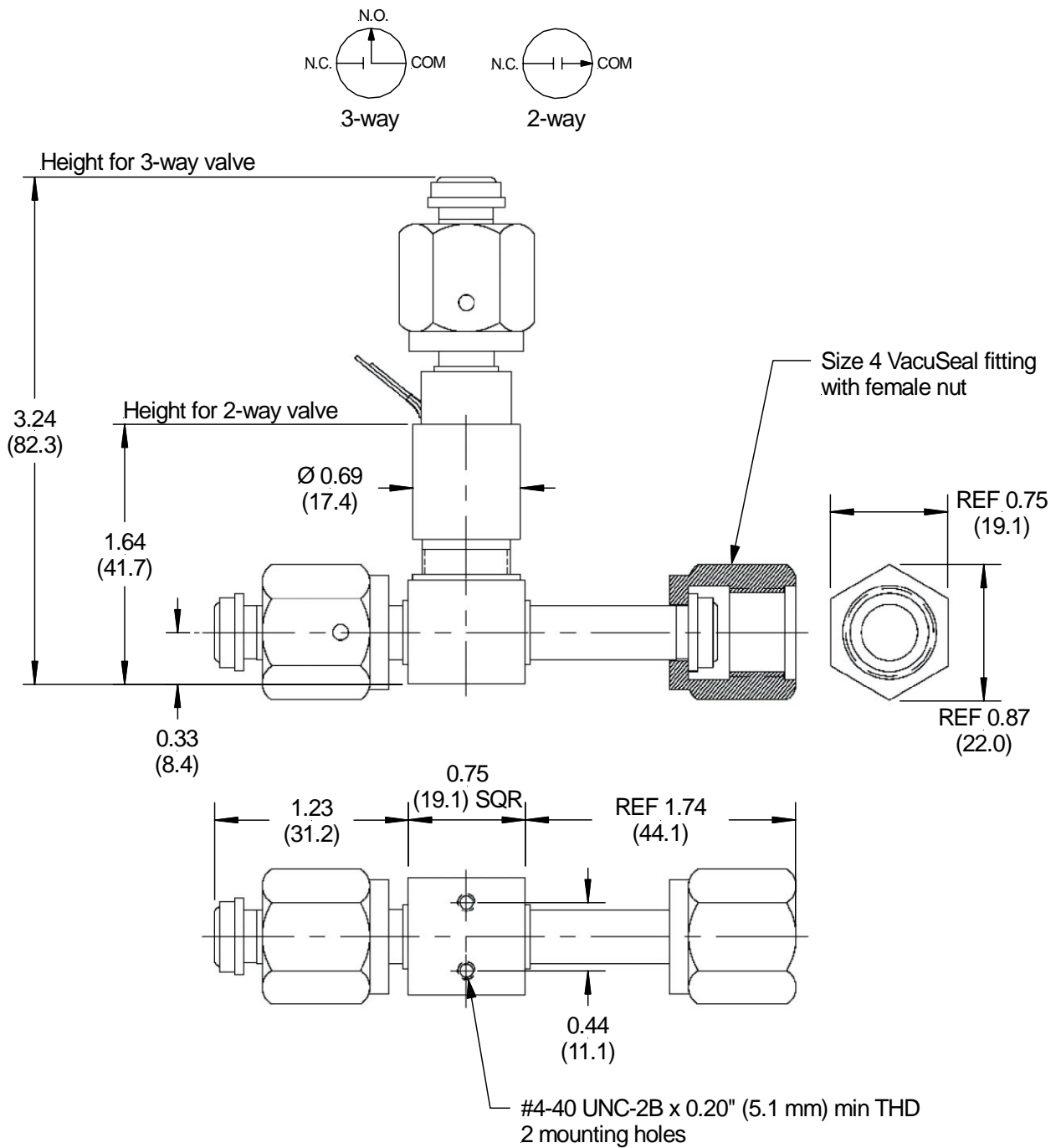
Part No. 099-0135-900 and 099-0075-900 (3-way),  
099-0080-900 (2-way NC)



dimensions in inches (mm)

OUTLINE DRAWING (cont.)

Part No. 099-0107-900 (3-way),  
099-0167-900 (2-way NC)



dimensions in inches (mm)

### ORDERING INFORMATION

Part No.	Type	Operating Pressure	Orifice	Voltage	Porting	Seals
099-0051-900	2-way NC	Vac...86 bar (1250 psi)	0.76 mm (0.030")	12 V <sub>DC</sub>	1/16" A-Lok	Vespel & gasket
099-0340-900				24 V <sub>DC</sub>		
099-0080-900	3-way	Vac...17 bar (250 psi)	1.52 mm (0.060")	12 V <sub>DC</sub>	1/8" A-Lok	FKM & gasket
099-0135-900				24 V <sub>DC</sub>		
099-0075-900			2.99 mm (0.116")	24 V <sub>DC</sub>	1/4" female VacuSeal	
099-0107-900						
099-0167-900	2-way NC					

Sensortechincs reserves the right to make changes to any products herein. Sensortechincs does not assume any liability arising out of the application or use of any product or circuit described herein, neither does it convey any license under its patent rights nor the rights of others.