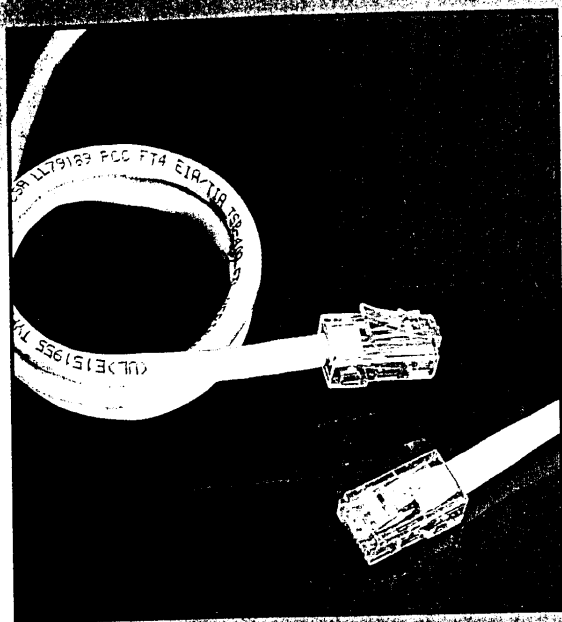
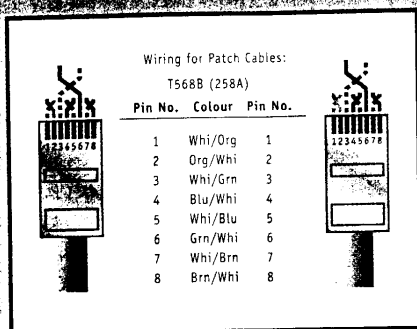


Cat.5 UTP PATCH CABLES

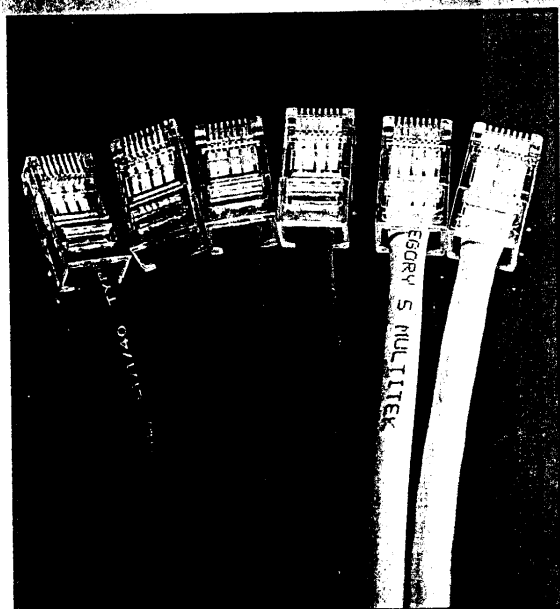
查询"1961-0.5"供应商



1961-1



Wiring Diagram



1961-1 1961-1 1961-1 1961-1 1961-1 1961-1

Premium Cat.5 UTP Patch Cables



Manufactured using quality sourced piece parts, each cable is tested and designed to meet Cat.5 requirements. All beige cables over 5m are manufactured using solid core cable, whereas shorter lengths use the more flexible stranded core version.

Features:

- Manufactured using quality piece parts:
- **Connectors:** RJ45 plug, 50 micron gold plated
- **Cable:** EIA/TIA TSB40-A, Cat.5 UTP stranded / solid UL approved cable
- Tested to 100 MHz frequency requirements
- Wired to 258A specification; covers data, voice and ISDN requirements
- Ex-stock availability for immediate despatch
- Quick turnaround, custom made length service available
- Choice of six colours for easy identification - follow individual cables at a glance within a network

STOCK NO. DESCRIPTION

Beige UTP Patch Cables

| | |
|----------|-----------------------------|
| 1961-0.3 | RJ45 UTP Patch Cable (0.3m) |
| 1961-0.5 | RJ45 UTP Patch Cable (0.5m) |
| 1961-1 | RJ45 UTP Patch Cable (1m) |
| 1961-1.5 | RJ45 UTP Patch Cable (1.5m) |
| 1961-2 | RJ45 UTP Patch Cable (2m) |
| 1961-3 | RJ45 UTP Patch Cable (3m) |
| 1961-4 | RJ45 UTP Patch Cable (4m) |
| 1961-5 | RJ45 UTP Patch Cable (5m) |
| 1961-6 | RJ45 UTP Patch Cable (6m) |
| 1961-8 | RJ45 UTP Patch Cable (8m) |
| 1961-10 | RJ45 UTP Patch Cable (10m) |
| 1961-12 | RJ45 UTP Patch Cable (12m) |
| 1961-15 | RJ45 UTP Patch Cable (15m) |
| 1961-20 | RJ45 UTP Patch Cable (20m) |
| 1961-25 | RJ45 UTP Patch Cable (25m) |
| 1961-35 | RJ45 UTP Patch Cable (35m) |
| 1961-50 | RJ45 UTP Patch Cable (50m) |

130-187

- Patch cable range now covers all current requirements - Cat.5 UTP, Enhanced Cat.5 UTP and STP

- Available from stock in six different colours

- Manufactured using 50 micron gold connectors and UL approved cable

- Fully tested and supplied with at least a 12 month guarantee

- Quick turnaround service on custom made cables



See pages 76 to 86 for further details