

# KBPC15005~KBPC1510

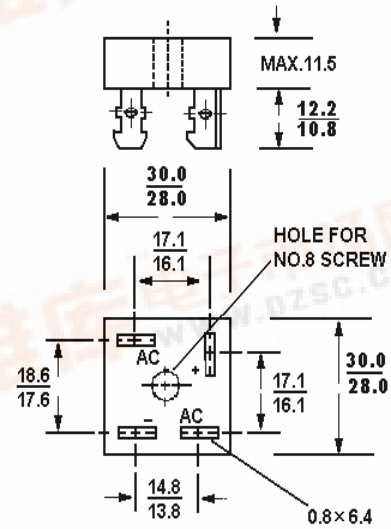
[查询"KBPC1502"供应商](#)

## HIGH CURRENT SINGLE-PHASE SILICON BRIDGE RECTIFIERS

### Features

- Surge overload 300 Amperes peak
- Low power loss, high efficiency
- Low reverse leakage current.

KBPC



Dimensions in mm

### Absolute Maximum Ratings and Characteristics

Rating at 25°C ambient temperature unless otherwise specified. resistive or inductive load 60 Hz.,

For capacitive load current by 20%.

Characteristic	KBPC 15005	KBPC 1501	KBPC 1502	KBPC 1504	KBPC 1506	KBPC 1508	KBPC 1510	Units
Maximum Recurrent Peak Reverse Voltage	50	100	200	400	600	800	1000	V
Maximum RMS Voltage	35	70	140	280	420	560	700	V
Maximum DC Blocking Voltage	50	100	200	400	600	800	1000	V
Maximum Average Forward Rectified Current at $T_C = 55^\circ\text{C}$	15							A
Peak Forward Surge Current, 8.3ms single half Sine-wave superimposed on rated load (JEDEC)	300							A
Maximum Forward Voltage at 7.5A DC and 25°C	1.2							V
Maximum Reverse Current at $T_A = 25^\circ\text{C}$ at Rated DC Blocking Voltage $T_A = 125^\circ\text{C}$	10 1000							uA
Typical Junction Capacitance (Note 1)	300							pF
Typical Thermal Resistance (Note 2)	2.3							°C/W
Operating Temperature Range $T_C$	-55 to +125							°C
Storage Temperature Range $T_A$	-55 to +150							°C

Notes: 1. Measured at 1MHz and applied reverse voltage of 4VDC.

2. Thermal resistance from junction to case per leg.

**SEMTECH ELECTRONICS LTD.**

(Subsidiary of Semtech International Holdings Limited, a company listed on the Hong Kong Stock Exchange, Stock Code: 724)



ISO/TS 16949 : 2002  
Certificate No. 05103

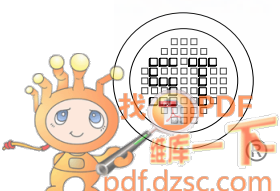


ISO 14001  
Certificate No. 7116

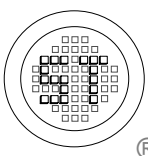
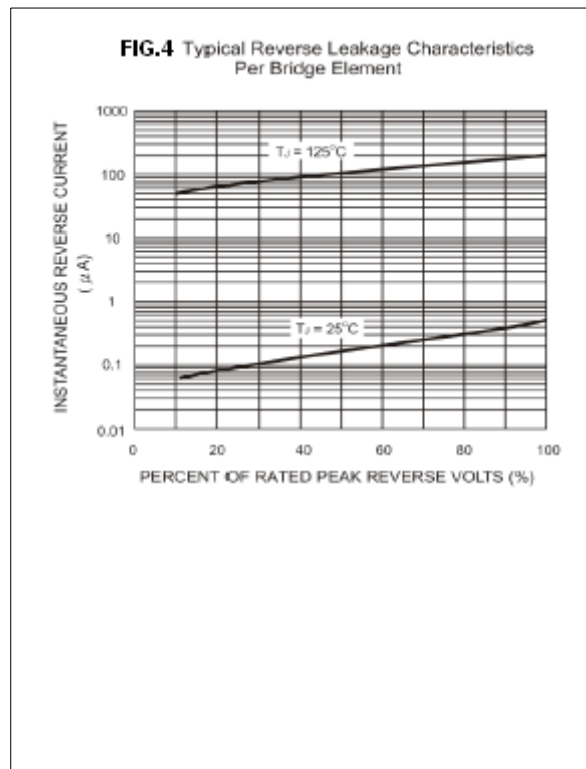
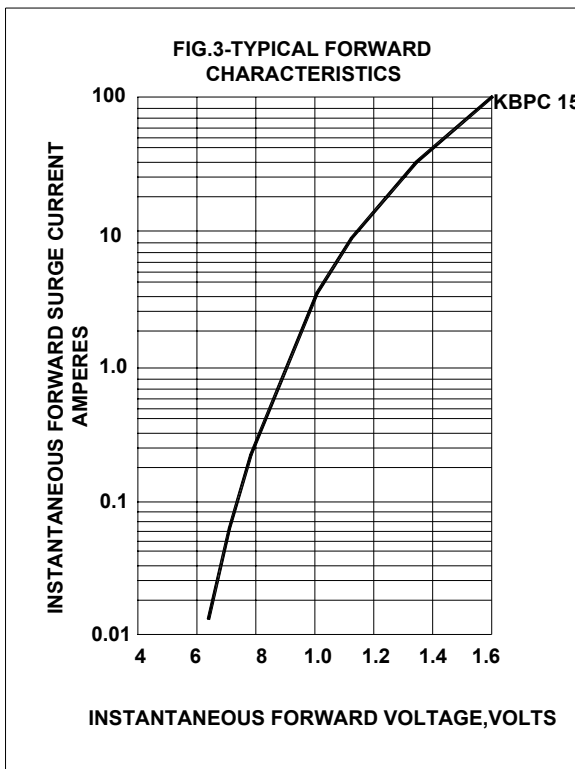
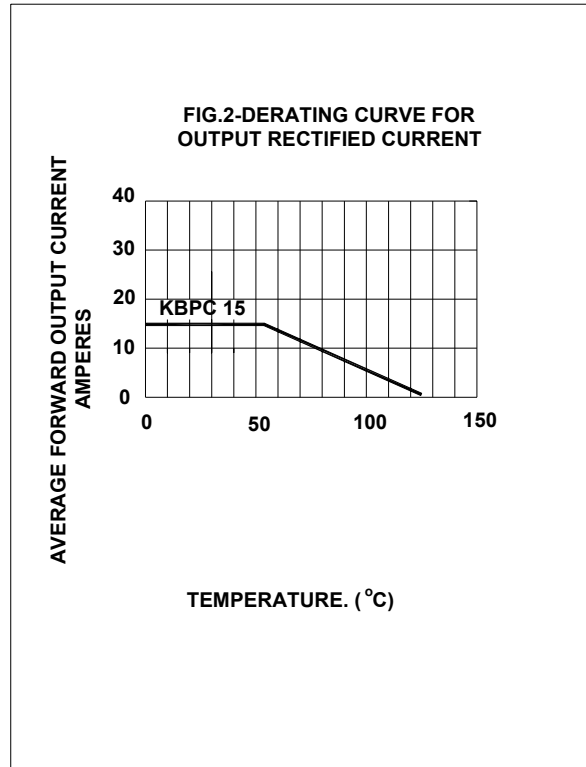
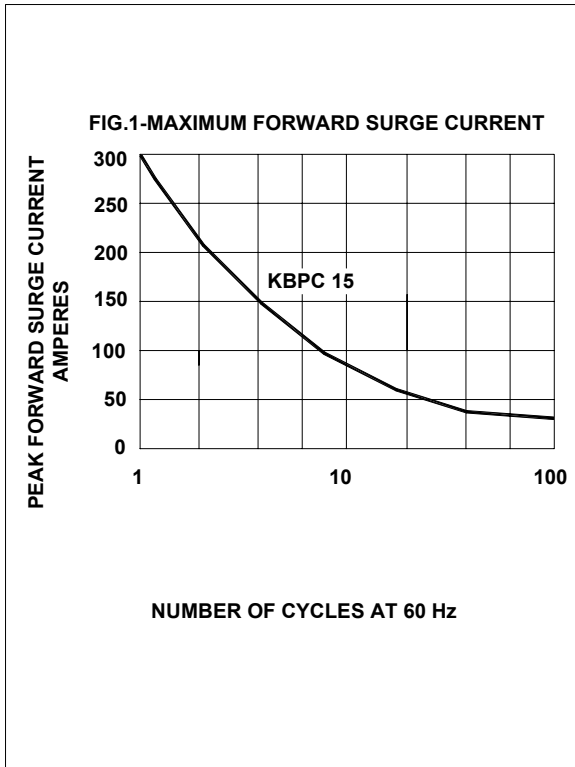


ISO 9001 : 2000  
Certificate No. 558-199-06-04

Dated : 19/07/2005

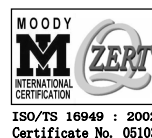


## RATINGS AND CHARACTERISTIC CURVES



**SEMTECH ELECTRONICS LTD.**

(Subsidiary of Semtech International Holdings Limited, a company listed on the Hong Kong Stock Exchange, Stock Code: 724)



ISO/TS 16949 : 2002  
Certificate No. 05103



ISO 14001  
Certificate No. 7116



ISO 9001 : 2000  
Certificate No. 558-1588-002-001

Dated : 19/07/2005