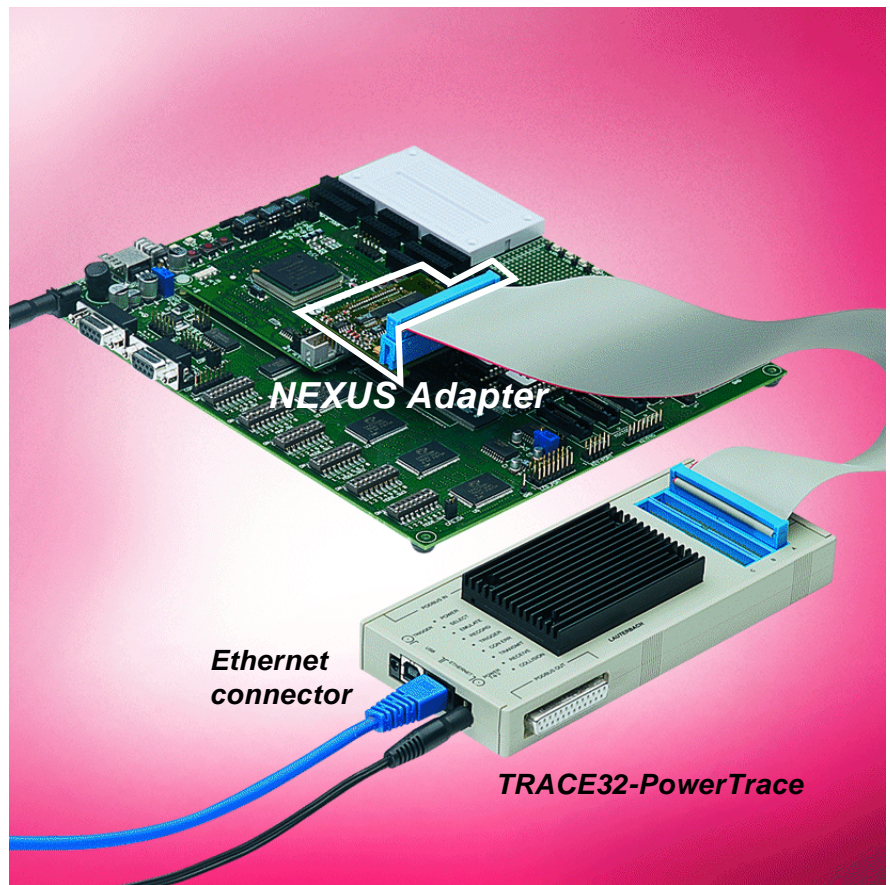


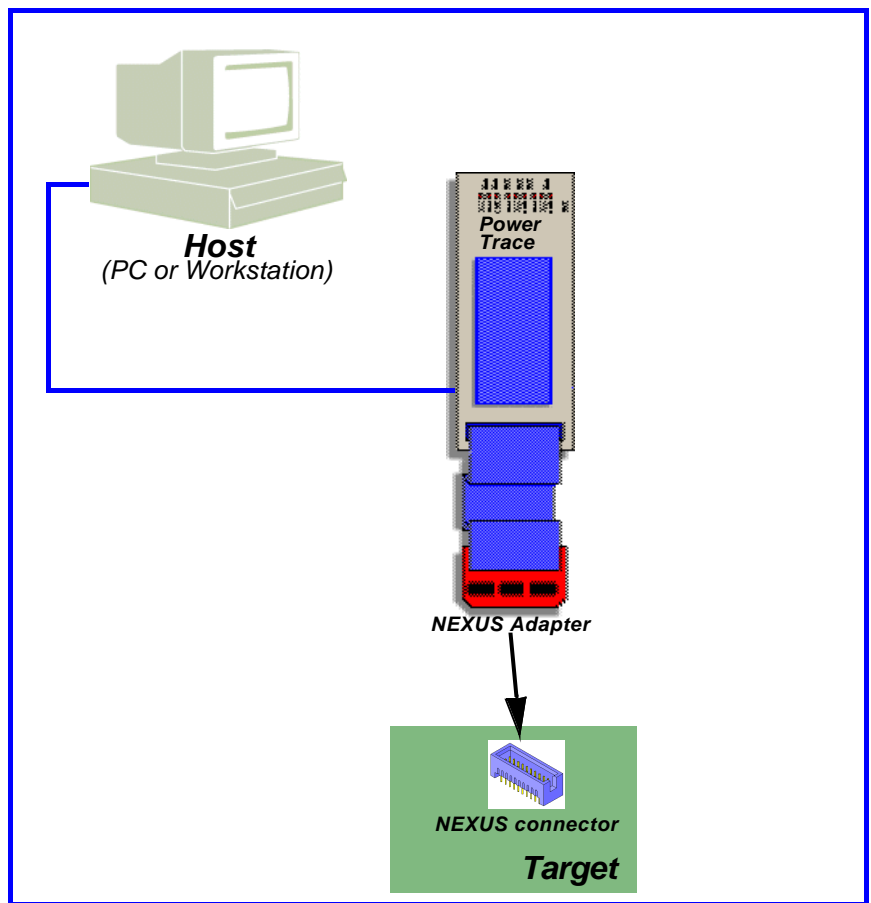
Hardware Concept

TRACE32-PowerTrace/NEXUS

The NEXUS support is based on the universal hardware module TRACE32-PowerTrace. The connection to the NEXUS interface on the target is done by a CPU specific NEXUS adapter.

TRACE32-PowerTrace includes a USB and Ethernet interface.





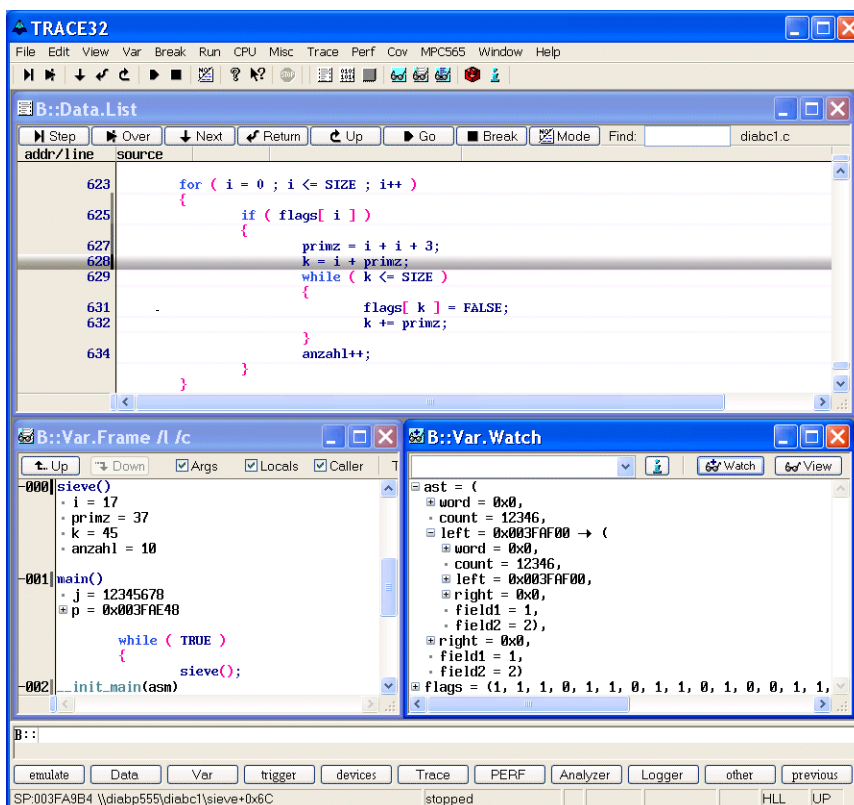
PowerTrace

- Universal debugger hardware for all architectures
- Ethernet or USB interface included
- Program and data flow trace for NEXUS up to 100MHz
- 16 MFrame trace memory
- 96 channels
- 32 bit time stamp, 20 ns resolution

CPU specific NEXUS Adapter

Software Concept Debugger

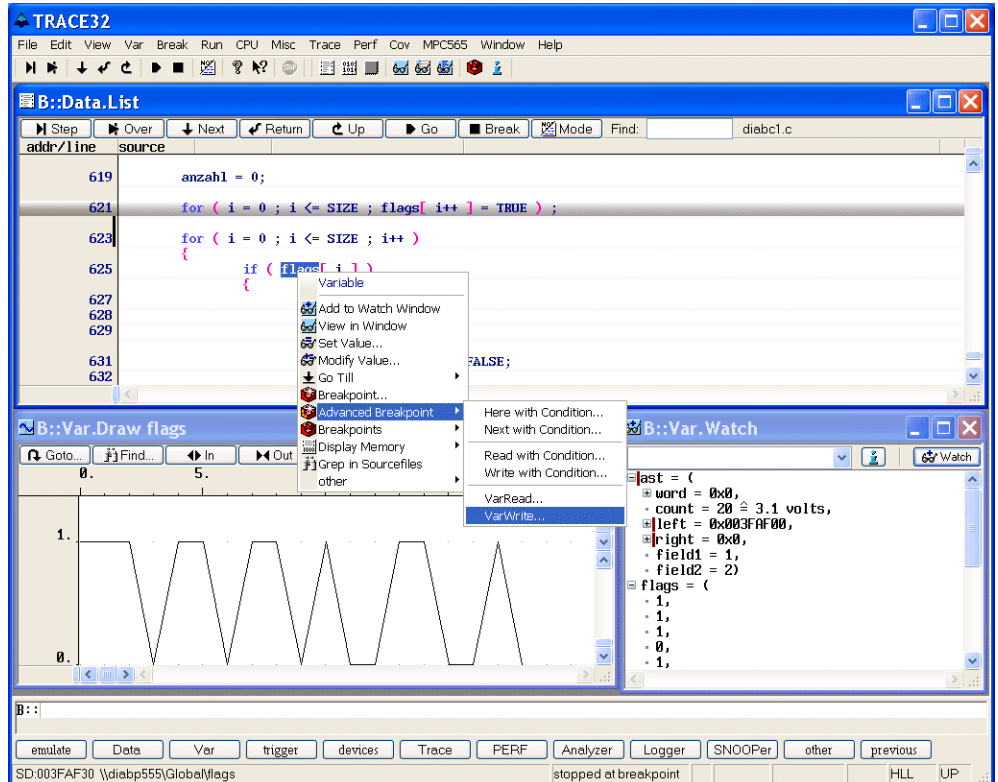
Symbolic Debugging



A hierarchical symbol database enables structured symbolic debugging. Symbol names can be used to show single program addresses, mod-

ule names and memory classes. The disassembler can use the symbols for labels and/or operands. Demangling for C++ signatures is supported.

High-Level Language Debugging



TRACE32 can directly load the output of all standard compilers for C, C++, JAVA, Pascal, Modula2, PEARL and ADA from most compiler vendors. Program display and debugging can be done in assembler, high-level or in a mixture of both. It is possible to con-

struct both assembler and high-level windows on the screen simultaneously. All variable types specific to the high-level language can be displayed and modified. Addresses can be absolute, relative or line number based.

Real-time update

Real-time update of memory and variables is possible while the CPU is running.

Debugging

The debugger uses the following breakpoint implementations to stop the program execution at a certain instruction:

- unlimited number of software breakpoints for code in RAM
- Unlimited Code Breakpoints in FLASH areas
- a limited number of onchip breakpoints for code in ROM/FLASH

The onchip breakpoints can also be used to stop the program execution after a read/write access to a specific memory address.

The number of available onchip breakpoints depends on the resources provided by the CPU used.

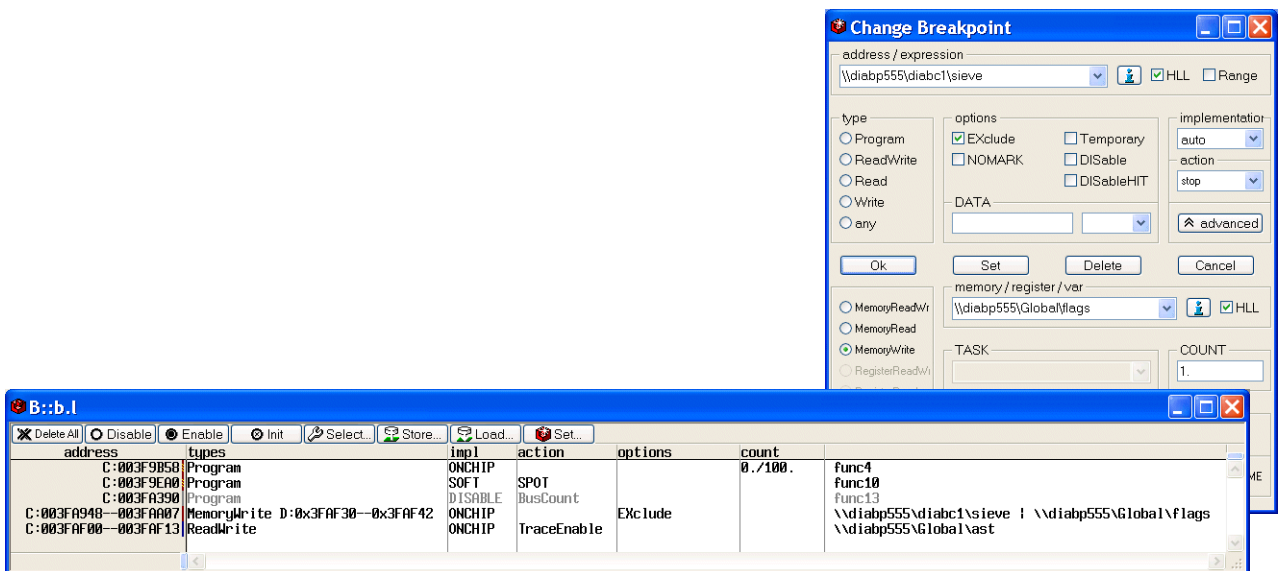
Advanced breakpoints

The NEXUS provides also a simple way to set complex break conditions:

- Setting of breakpoints to the reading and writing of specific data values
- Linking the breakpoint with a condition

- Linking the breakpoint with commands that are executed whenever the breakpoint is reached
- Spot breakpoints on data accesses

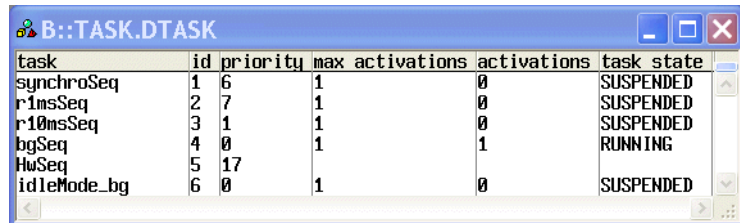
A combination of all 4 new features is also possible.



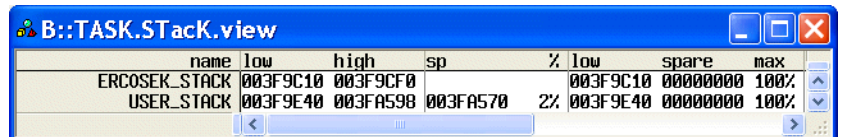
RTOS Awareness

The NEXUS Debuggers provide display functions, closely mirroring the command set of the integral debugger of the RTOS. The system resources e.g. tasks, objects, partitions, queues,

regions and semaphores can be displayed. These functions are also available if the integral debugger is not linked to the software.

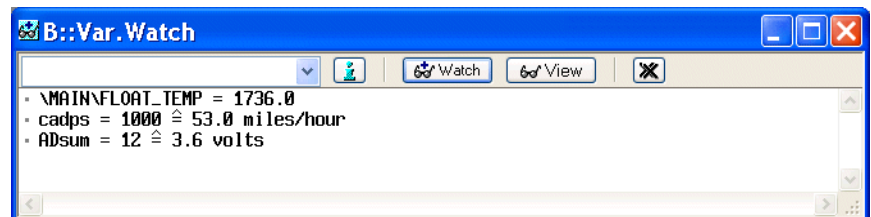


task	id	priority	max activations	activations	task state
synchroSeq	1	6	1	0	SUSPENDED
r1msSeq	2	7	1	0	SUSPENDED
r10msSeq	3	1	1	0	SUSPENDED
bgSeq	4	0	1	1	RUNNING
HwSeq	5	17			
idleMode_bg	6	0	1	0	SUSPENDED



name	low	high	sp	%	low	spare	max
ERCOSEK_STACK	003F9C10	003F9CF0			003F9C10	00000000	100%
USER_STACK	003F9E40	003FA598	003FA570	2%	003F9E40	00000000	100%

OSEK awareness with ORTI support

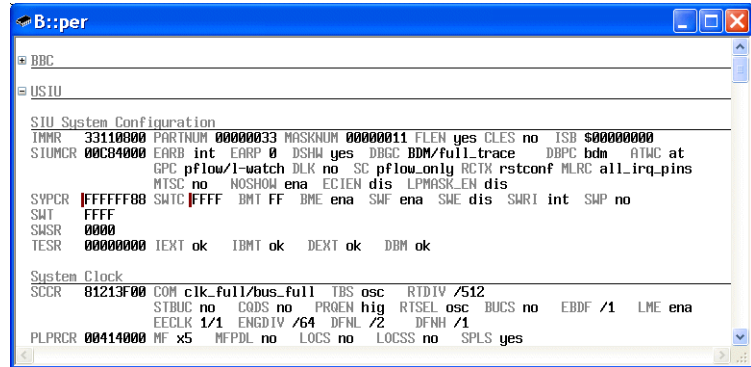


· \MAIN\FLOAT_TEMP = 1736.0
· cadps = 1000 $\hat{=}$ 53.0 miles/hour
· ADsum = 12 $\hat{=}$ 3.6 volts

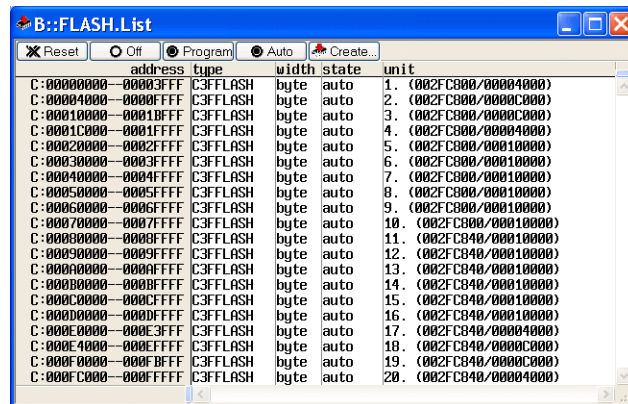
ASAP2 based scaled variable display

Peripherals

- Display of onchip peripherals
- User definable display of the onchip peripherals
- Definition is done interactive supported by softkeys
- Pull down menus for settings
- Additional description for each field



Flash Programming



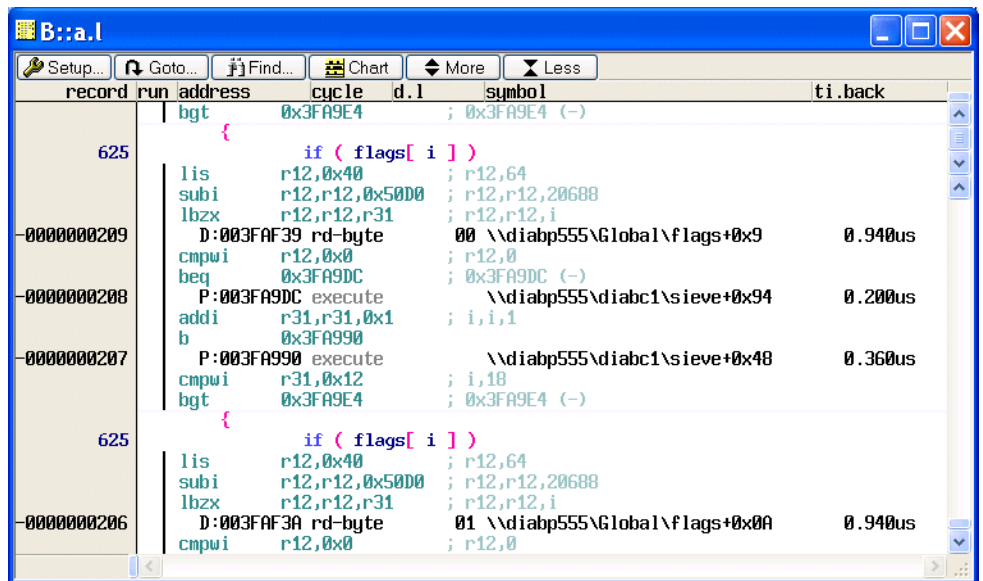
The NEXUS debugger support the programming of external flash memory as well as the programming of internal flash memory of microcontrollers. The

programming can be controlled by the debugger or by a routine in the target system.

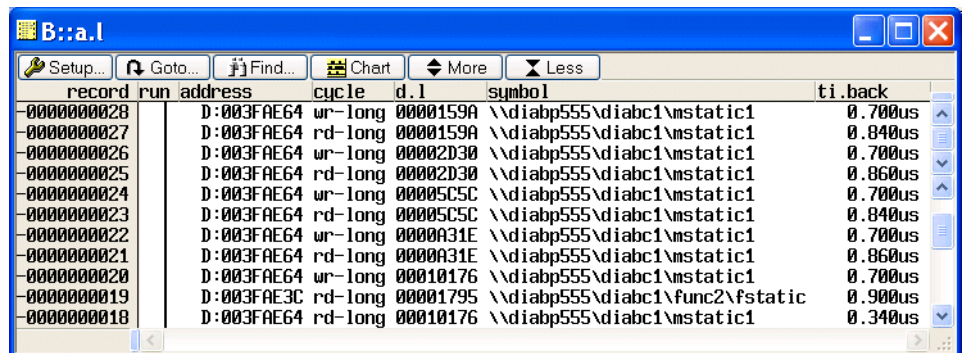
Software Concept Trace

Program/Data Flow Trace

TRACE32-PowerTrace for NEXUS samples all trace messages output via the NEXUS Auxiliary Output Port e.g. branch trace messages, data trace messages....



Selective Tracing

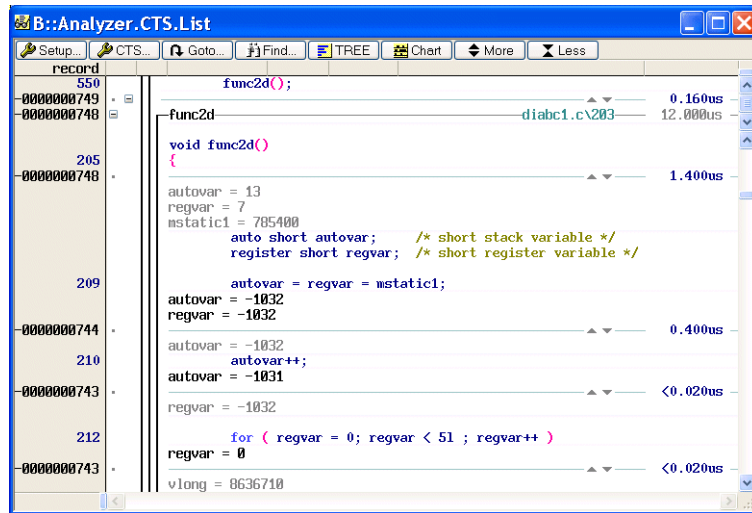


TRACE32-PowerTrace/NEXUS supports selective tracing on 2 data address ranges. Selective tracing is supported on:

- Specified data accesses only

- Specified data accesses plus the complete program flow information

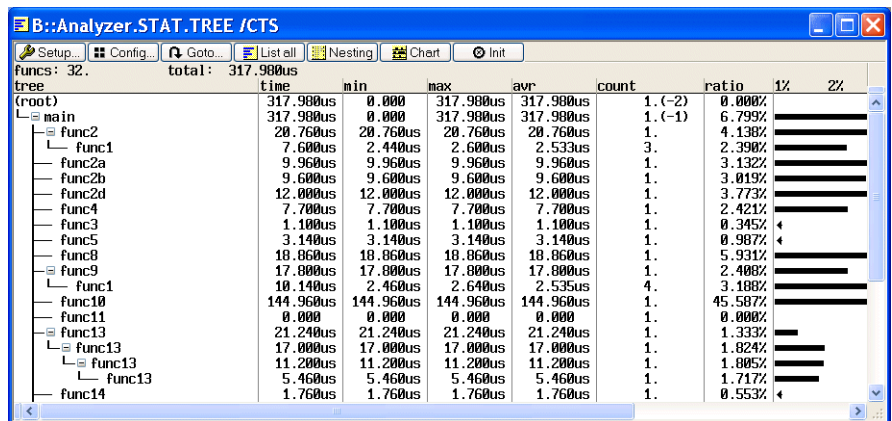
CTS Context Tracking System and SmartTrace



- Reconstructs registers and memory from trace
- SmartTrace fills trace gaps caused by buffer overflow

Statistic functions

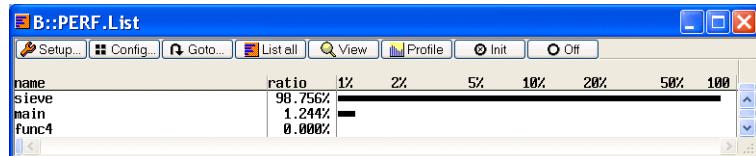
The very large trace buffer allows function runtime analysis over a long period.



Trace-based Performance Analysis

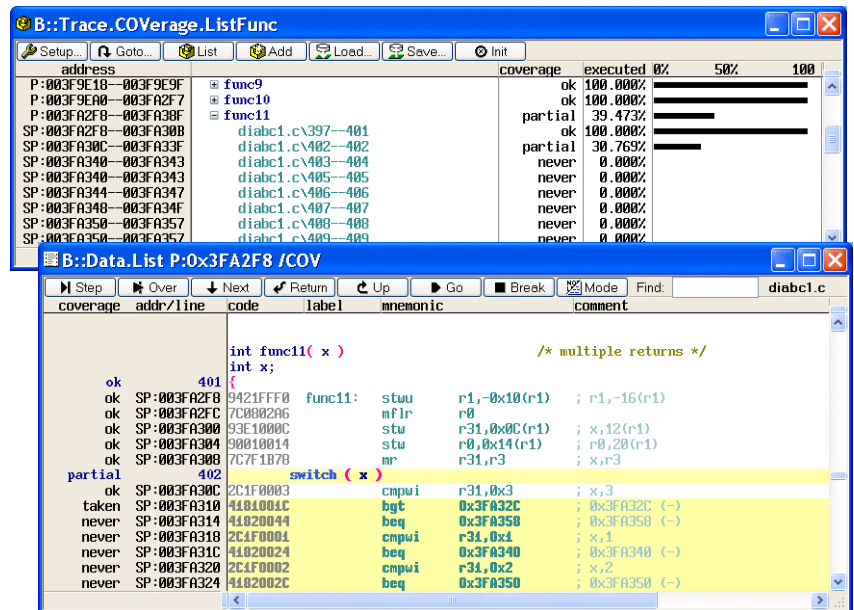
The performance measurement used by TRACE32-PowerTrace/NEXUS is a statistical process. To determine for example which function or which module uses the greatest proportion of the total runtime the recording into the

trace memory is stopped briefly to determine the current program counter contents. This measurement has absolutely no influence on the real-time behaviour.



Code Coverage

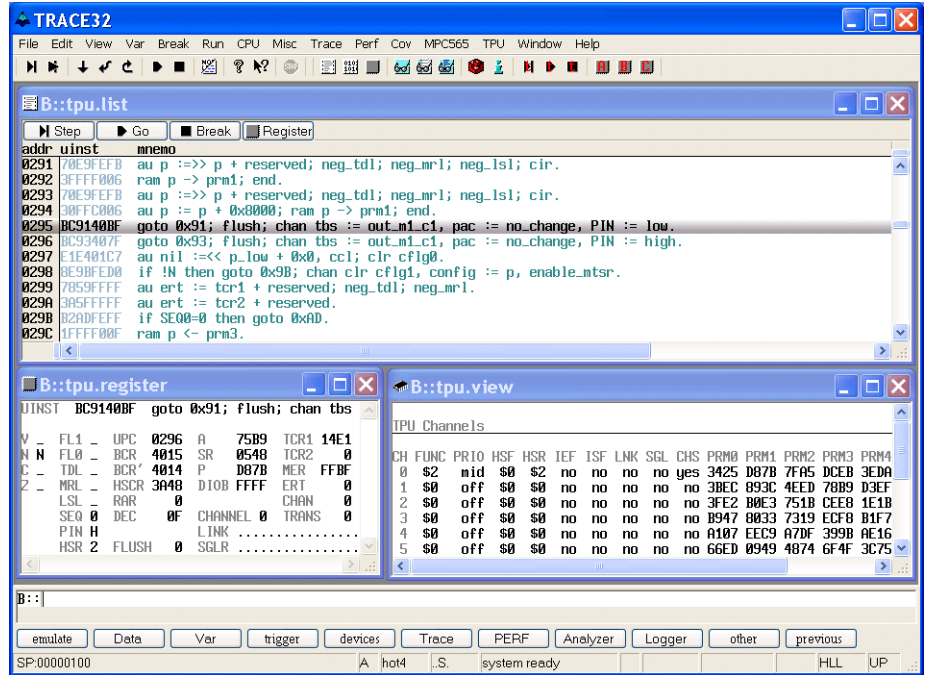
It is also possible to perform a code coverage analysis based on the comprehensive information from the trace memory.



TPU Support

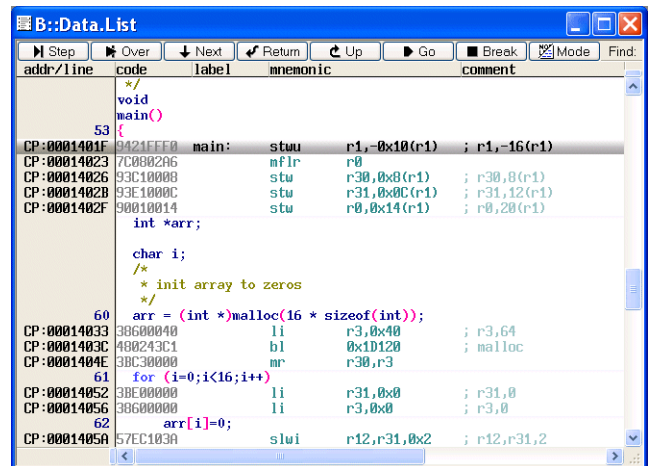
The TPU Debugger allows debugging the TPU (Timing Processor Unit) found on many Motorola Devices. It allows setting break conditions on different

events and single stepping the TPU microcode while watching the internal registers of the TPU.



Code Compression

- Full support of Phase B code compression

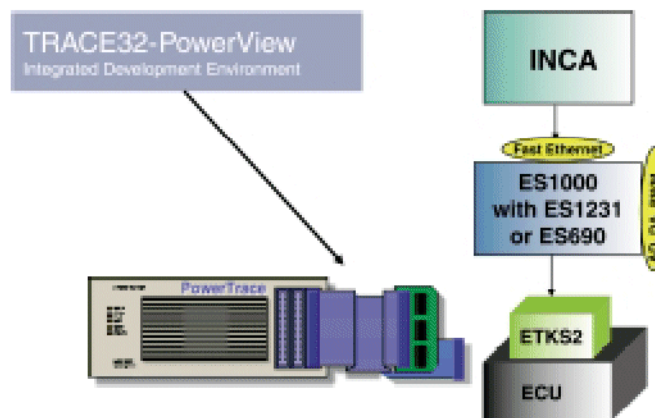


Standby Mode

Standby mode and debugging thru power-down cycle is supported.

ETK Support

The NEXUS for PowerPC can work with ETAS ETK



Supported Processors

CPU	ICE	FIRE	ICD DEBUG	ICD MONITOR	ICD TRACE	POWER INTEGRATOR	INSTRUCTION SIMULATOR
MPC533			YES		YES		YES
MPC534			YES		YES		YES
MPC535			YES		YES		YES
MPC536			YES		YES		YES
MPC561			YES		YES		YES
MPC562			YES		YES		YES
MPC563			YES		YES		YES
MPC564			YES		YES		YES
MPC565			YES		YES		YES
MPC566			YES		YES		YES

Operation Voltage and Frequency

Operation Voltage

This list contains information on probes available for other voltage ranges. Probes not noted here supply an operation voltage range from 4.5V to 5.5V.

Adapter	Code	OrderNo	Voltage Range
Nexus Adapter for MPC56x family/ AMP40NS	NEXUS- MPC565- AMP40NS	LA-7781	2.3 .. 3.0 V
Nexus Adapter for MPC56x family/ Glenair51	NEXUS- MPC565- GLEN51	LA-7782	2.3 .. 3.0 V
Nexus Adapter for MPC56x family/ AMP50	NEXUS- MPC565- AMP50	LA-7783	2.3 .. 3.0 V
Nexus Adapter for MPC56x family/ Mictor38	NEXUS- MPC565- MICTOR	LA-7791	2.3 .. 3.0 V

Frequency Trace

The maximum operation frequency of TRACE32-RISC Trace or PowerTrace depends on:

- The max. frequency of the CPU
- The number of waitstates (bus trace)

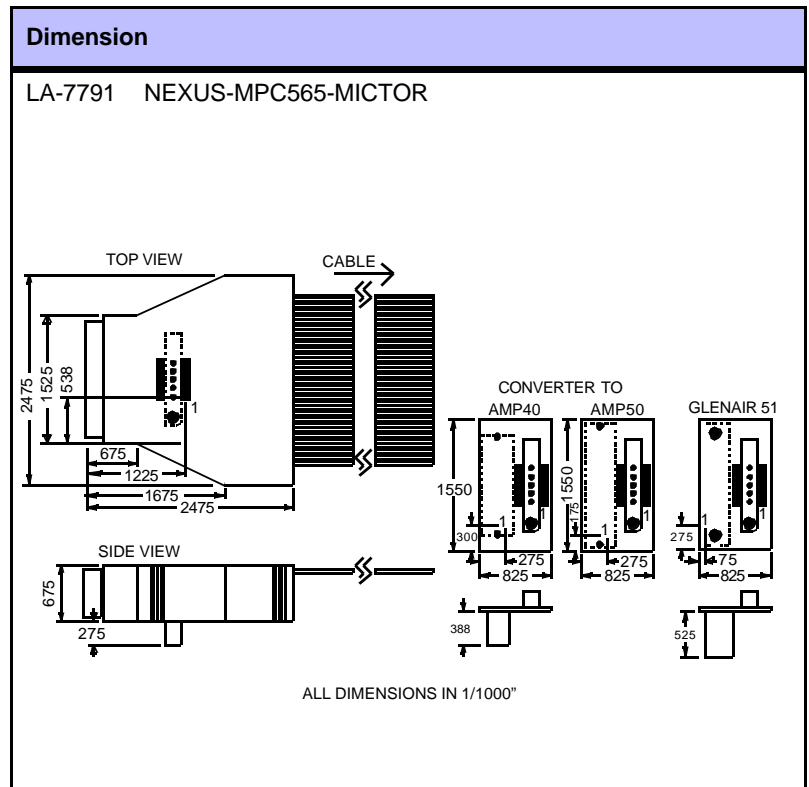
- The divide factor between trace clock and core clock
- The speed of the trace adapter

Module	CPU	TRACE
LA-7781	MPC533	80.0 MHz
LA-7781	MPC534	80.0 MHz
LA-7781	MPC535	80.0 MHz
LA-7781	MPC536	80.0 MHz
LA-7781	MPC561	80.0 MHz
LA-7781	MPC562	80.0 MHz
LA-7781	MPC563	80.0 MHz
LA-7781	MPC564	80.0 MHz
LA-7781	MPC565	80.0 MHz
LA-7781	MPC566	80.0 MHz
LA-7782	MPC533	80.0 MHz
LA-7782	MPC534	80.0 MHz
LA-7782	MPC535	80.0 MHz

Module	CPU	TRACE
LA-7782	MPC536	80.0 MHz
LA-7782	MPC561	80.0 MHz
LA-7782	MPC562	80.0 MHz
LA-7782	MPC563	80.0 MHz
LA-7782	MPC564	80.0 MHz
LA-7782	MPC565	80.0 MHz
LA-7782	MPC566	80.0 MHz
LA-7783	MPC533	80.0 MHz
LA-7783	MPC534	80.0 MHz
LA-7783	MPC535	80.0 MHz
LA-7783	MPC536	80.0 MHz
LA-7783	MPC561	80.0 MHz
LA-7783	MPC562	80.0 MHz
LA-7783	MPC563	80.0 MHz
LA-7783	MPC564	80.0 MHz
LA-7783	MPC565	80.0 MHz
LA-7783	MPC566	80.0 MHz
LA-7791	MPC533	80.0 MHz
LA-7791	MPC534	80.0 MHz
LA-7791	MPC535	80.0 MHz
LA-7791	MPC536	80.0 MHz
LA-7791	MPC561	80.0 MHz
LA-7791	MPC562	80.0 MHz
LA-7791	MPC563	80.0 MHz
LA-7791	MPC564	80.0 MHz
LA-7791	MPC565	80.0 MHz
LA-7791	MPC566	80.0 MHz

Dimensions and Adapters

Modules



Connectors (MICTOR)

Signal	Pin	Pin	Signal
HRESET-	1	2	VREF
EVTI-	3	4	RSTI-
MSEI-	5	6	MDI0
GND	7	8	GND
MCKI	9	10	MDO0
GND	11	12	GND
MCKO	13	14	EVTO-
GND	15	16	GND
MSEO0-	17	18	ARBREQ
GND	19	20	GND
MDO1	21	22	MDO2
GND	23	24	GND
MDO3	25	26	MDI1
N/C	27	28	N/C
MSEO1-	29	30	MDO4
GND	31	32	VENDEF1
MDO5	33	34	MDO6
VENDEF0	35	36	NRES0
MDO7	37	38	ARBGRANT

Order Information

Module Description

OrderNo Code	Text
LA-7781 NEXUS- MPC565- AMP40NS	Nexus Adapter for MPC56x family/AMP40NS Adapter for NEXUS on Spanish Oak (MPC565), Silver Oak (MPC561) and Green Oak (MPC563) 40 pin AMP connector (non standard) includes debug and trace software TRACE32-PowerView
LA-7782 NEXUS- MPC565- GLEN51	Nexus Adapter for MPC56x family/Glenair51 Adapter for NEXUS on Spanish Oak (MPC565), Silver Oak (MPC561) and Green Oak (MPC563) 51 pin Glenair connector includes debug and trace software TRACE32-PowerView
LA-7783 NEXUS- MPC565- AMP50	Nexus Adapter for MPC56x family/AMP50 Adapter for NEXUS on Spanish Oak (MPC565), Silver Oak (MPC561) and Green Oak (MPC563) 50 pin nonrobust AMP50 connector (AMP 104549-7) includes debug and trace software TRACE32-PowerView
LA-7785 NEXUS-CONV- SMALL-50	Conv. Large NEXUS Model to Small Model AMP50 Converter from large NEXUS model AMP50 to small NEXUS model AMP50 for adapter for NEXUS on Spanish Oak (MPC565), Silver Oak (MPC561) and Green Oak (MPC563)
LA-7791 NEXUS- MPC565- MICTOR	Nexus Adapter for MPC56x family/Mictor38 Adapter for NEXUS on Spanish Oak (MPC565), Silver Oak (MPC561) and Green Oak (MPC563) with 38 pin mictor connector AMP40NS NEXUS connector requires LA-7793 AMP50 NEXUS connector requires LA-7794 GLENAIR51 NEXUS connector requires LA-7797 includes debug and trace software TRACE32-PowerView requires PowerTrace hardware
LA-7793 CONV- MICTOR38- AMP40	Converter Mictor38 to NEXUS/AMP40 for MPC56x Converter from the 38 pin mictor connector on Nexus Adapter for MPC56x family/Mictor38 (LA-7791) to NEXUS/AMP40NS
LA-7794 CONV- MICTOR38- AMP50	Converter Mictor38 to NEXUS/AMP50 for MPC56x Converter from the 38 pin mictor connector on Nexus Adapter for MPC56x family/Mictor38 (LA-7791) to NEXUS/AMP50
LA-7797 CONV-MIC38- GL51-56X	Conv. Mictor38 to NEXUS/GLENAIR51 for MPC56x Converter from the 38 pin mictor connector on Nexus Adapter for MPC56x family/Mictor38 (LA-7791) to NEXUS 51 pin Glenair connector

Detailed Order Information

Order No.	Code	Text
LA-7781	NEXUS-MPC565-AMP40NS	Nexus Adapter for MPC56x family/AMP40NS
LA-7782	NEXUS-MPC565-GLEN51	Nexus Adapter for MPC56x family/Glenair51
LA-7783	NEXUS-MPC565-AMP50	Nexus Adapter for MPC56x family/AMP50
LA-7785	NEXUS-CONV-SMALL-50	Conv. Large NEXUS Model to Small Model AMP50
LA-7791	NEXUS-MPC565-MICTOR	Nexus Adapter for MPC56x family/Mictor38
LA-7793	CONV-MICTOR38-AMP40	Converter Mictor38 to NEXUS/AMP40 for MPC56x
LA-7794	CONV-MICTOR38-AMP50	Converter Mictor38 to NEXUS/AMP50 for MPC56x
LA-7797	CONV-MIC38-GL51-56X	Conv. Mictor38 to NEXUS/GLENAIR51 for MPC56x
Additional Options		
LA-1370	MICTOR-FLEXEXT	Mictor Flex Extension

Contact

International Representative

Australia

Embedded Logic Solutions Pty L
Mr. Ramzi Kattan
391 Hume Highway
Bankstown NSW 2200
Phone: ++61 2 9793 9542
FAX: ++61 2 9790 1183
EMAIL: sales@emlogic.com.au

Austria

Lauterbach Datentechnik GmbH
Mr. Norbert Weiss
Fichtenstr. 27
D-85649 Hofolding
Phone: ++49 8104 8943 183
FAX: ++49 8104 8943 170
EMAIL: info_de@lauterbach.com

Belgium

Tritec Benelux B.V.
Mr. Robbert de Voogt
Stationspark 550
NL-3364 DA Slidrecht
Phone: ++31 184 41 41 31
FAX: ++31 184 42 36 11
EMAIL: software@tritec.nl

Brazil

ANACOM Software e Hardware Ltd
Mr. Rodrigo Ferreira
Rua Nazareth, 807, Bairro Barc
BR-09551-200 Sao Caetano do Sul
Phone: 0055 11 3422-4200
FAX: 0055 11 3422-4242
EMAIL: rferreira@anacom.com.br

Canada

Lauterbach Inc.
4 Mount Royal Ave.
USA-Marlborough, MA 01752
Phone: ++1 508 303 6812
FAX: ++1 508 303 6813
EMAIL: info_us@lauterbach.com

China

Watertek Inc.
Mr. Liu Ming
Room 1006, Hai Tai Building
No.229, North Si Huan Zhong Rd.
PRC-Beijing Hai Dian Distr., 100083
Phone: +86 10 82883933-680
FAX: +86 10 82883858
EMAIL: sales@watertek.com

Denmark

Nohau Danmark A/S
Mr. Flemming Jensen
Klausdalsbrovej 493
DK-2730 Herlev
Phone: ++45 44 52 16 50
FAX: ++45 44 52 26 55
EMAIL: info@nohau.dk

Egypt

Wantech
Mr. Nawara
5 Shafik Ghalie St., Suite 2
Off Pyramids Road, Giza
Cairo 12111
Phone: ++20 2 5848020
FAX: ++20 2 5877303
EMAIL: sales@wantech.net.com

Finland

Nohau
Mr. Leevi Lehtinen
Teknobulevardi 3-5
FI-01531 Vantaa
Phone: ++358 40 546 1469
FAX: ++358 9 2517 8101
EMAIL: leevi.lehtinen@nohau.se

France

Logic Instrument
Mr. Stephane Morice
BP 116
71, route de Saint-Denis
F-95170 Deuil la Barre
Phone: ++33 1 342861 70
FAX: ++33 1 342800 50
EMAIL: s.morice@logic-instrument.com

Germany

Lauterbach Datentechnik GmbH
Mr. Norbert Weiss
Fichtenstr. 27
D-85649 Hofolding
Phone: ++49 8104 8943 183
FAX: ++49 8104 8943 170
EMAIL: info_de@lauterbach.com

Germany North

Lauterbach Datentechnik GmbH
Mr. Klaus Hommann
Leonhardring 5
D-31319 Sehnde
Phone: ++49 5138 6185 0
FAX: ++49 5138 6185 3
EMAIL: klaus.hommann@lauterbach.com

India

Electro Systems Ass. Pvt. Ltd.
Mr. G. V. Gurunatham
4215 JK Complex First Main Rd.
IND-Bangalore 560 021
Phone: ++91 80 23577924
FAX: ++91 80 23475615
EMAIL: esaindia@vsnl.com

Ireland

Lauterbach Ltd.
Mr. Barry Lock
11 Basepoint Enterprise Centre
Stroudley Road
Basingstoke, Hants RG24 8UP
Phone: ++44-1256-333-690
FAX: ++44-1256-336-661
EMAIL: info_uk@lauterbach.com

Israel

Itec Ltd.
Mr. Mauri Gottlieb
P.O.Box 10002
IL-Tel Aviv 61100
Phone: ++972 3 6491202
FAX: ++972 3 6497661
EMAIL: general@itec.co.il

Italy

Lauterbach Srl
Mr. Maurizio Menegotto
Via Enzo Ferrieri 12
I-20153 Milano
Phone: ++39 02 45490282
FAX: ++39 02 45490428
EMAIL: info_it@lauterbach.com

Japan

Lauterbach Japan, Ltd.
Mr. Kenji Furukawa
3-9-5 Shinyokohama
Kouhoku-ku
Yokohama-shi, Japan 222-0033
Phone: ++81-45-477-4511
FAX: ++81-45-477-4519
EMAIL: info@lauterbach.co.jp

Luxemburg

Tritec Benelux B.V.
Mr. Robbert de Voogt
Stationspark 550
NL-3364 DA Sliedrecht
Phone: ++31 184 41 41 31
FAX: ++31 184 42 36 11
EMAIL: software@tritec.nl

Malaysia

Flash Technology
Mr. Teo Kian Hock
No 61, # 04-15 Kaki Bukit Av 1
Shun Li Industrial Park
SGP-Singapore 417943
Phone: ++65 6749 6168
FAX: ++65 6749 6138
EMAIL: flashsgp@pacific.net.sg

Netherlands

Tritec Benelux B.V.
Mr. Robbert de Voogt
Stationspark 550
NL-3364 DA Sliedrecht
Phone: ++31 184 41 41 31
FAX: ++31 184 42 36 11
EMAIL: software@tritec.nl

New Zealand

Embedded Logic Solutions Pty L
Mr. Ramzi Kattan
391 Hume Highway
Bankstown NSW 2200
Phone: ++61 2 9793 9542
FAX: ++61 2 9790 1183
EMAIL: sales@emlogic.com.au

Norway

Nohau Elektronik AB
Mr. Greger Andersson
Derbyvägen 4
S-21235 Malmoe
Phone: ++46 40 59 22 00
FAX: ++46 40 59 22 29
EMAIL: info@nohau.se

Poland

Quantum Sp.z o.o. Korp. Transf
Mr. Czeslaw Bil
ul. Skwierzynska 21
53-521 Wroclaw
Phone: ++48 71 362 6356
FAX: ++48 71 362 6357
EMAIL: bil@quantum.com.pl

Portugal

Captura Electronica, SCCL
Mr. Juan Martinez
c/Albert Einstein s/n
Edificio Forum de la Tecnol.
E-08042 Barcelona
Phone: ++34 93 291 76 33
FAX: ++34 93 291 76 35
EMAIL: info@captura-el.com

Singapore

Flash Technology
Mr. Teo Kian Hock
No 61, # 04-15 Kaki Bukit Av 1
Shun Li Industrial Park
SGP-Singapore 417943
Phone: ++65 6749 6168
FAX: ++65 6749 6138
EMAIL: flashsgp@pacific.net.sg

South Korea

MDS Technology Co.,Ltd.
Mr. Hunchul Kim
15F Kolon Digital Tower Vilant
#222-7, Guro-3dong, Guro-gu
Seoul, 152-848, ROK
Phone: ++82 2 2106 6000
FAX: ++82 2 2106 6004
EMAIL: trace32@mdstec.com

Spain

Captura Electronica, SCCL
Mr. Juan Martinez
c/Albert Einstein s/n
Edificio Forum de la Tecnol.
E-08042 Barcelona
Phone: ++34 93 291 76 33
FAX: ++34 93 291 76 35
EMAIL: info@captura-el.com

Sweden

Nohau Elektronik AB
Mr. Greger Andersson
Derbyvägen 4
SE-21235 Malmoe
Phone: ++46 40 59 22 00
FAX: ++46 40 59 22 29
EMAIL: info@nohau.se

Switzerland

JDT Jberg DatenTechnik
Mr. Andreas Jberg
Zimmererstrasse 2
CH-5734 Reinach AG
Phone: ++41 62 7710 886
FAX: ++41 62 7717 187
EMAIL: Andreas.Jberg@jdt.ch

Taiwan

Superlink Technology Corp.
Mr. Sulin Huang
3F-8, No. 77, Shin-Tai-Wu Rd. Sec1
Taipei Hsien 221, Taiwan, R.O.C.
Phone: ++886 2 26983456
FAX: ++886 2 26983535
EMAIL: stc@tpts1.seed.net.tw

Turkey

Bildem Bilgisayar Ltd. Sti.
Mr. Hakan Yavuz
Koroglu Cad. 64/3 G.O.Pasa
TR-06700 Ankara
Phone: ++90 312 4472700
FAX: ++90 312 4472702
EMAIL: info@bildem.com.tr

UK

Lauterbach Ltd.
Mr. Barry Lock
11 Basepoint Enterprise Centre
Stroudley Rd
Basingsstoke, Hants RG24 8UP
Phone: ++44 (0) 1256-333690
FAX: ++44 (0) 1256-336661
EMAIL: info_uk@lauterbach.com

USA East

Lauterbach Inc.
Mr. Udo Zoettler
4 Mount Royal Ave.
USA-Marlborough, MA 01752
Phone: ++1 508 303 6812
FAX: ++1 508 303 6813
EMAIL: info_us@lauterbach.com

USA West

Lauterbach Inc.
Mr. Jerry Flake
13256 SW Hillshire Drive
USA-Tigard, OR 97223
Phone: ++1 503 524 2222
FAX: (503) 524 2223
EMAIL: jerry.flake@lauterbach.com

Additional Information

<http://www.lauterbach.com>

Lauterbach Datentechnik GmbH

Fichtenstr. 27
D-85649 Hofolding
Tel. ++49 8104 8943-188 FAX -187
info@lauterbach.com
<http://www.lauterbach.de>

Lauterbach Inc.

4 Mount Royal Ave.
Marlboro MA 01752
Phone (508) 303 6812 FAX (508) 303 6813
info_us@lauterbach.com
<http://www.lauterbach.com/usa>

Lauterbach Ltd.

11 Basepoint Enterprise Ctre Stroudley Road
Basingstoke, Hants RG24 8UP
Phone ++44-1256-333-690 FAX -661
info_uk@lauterbach.com
<http://www.lauterbach.co.uk>

Lauterbach Japan, Ltd.

3-9-5 Shinyokohama Kouhoku-ku
Yokohama-shi Japan 222-0033
Phone ++81-45-477-4511 FAX -4519
info_j@lauterbach.com
<http://www.lauterbach.co.jp>

Lauterbach s.r.l.

Lauterbach s.r.l.
Via Enzo Ferrieri 12
I-20153 Milano
Phone ++39 02 45490282
FAX ++39 02 45490428
info_it@lauterbach.it
<http://www.lauterbach.it>

Disclaimer

The information presented is intended to give overview information only.
Changes and technical enhancements or modifications can be made with-

[查询"MPC533"供应商](#)

Copyright © Each Manufacturing Company.

All Datasheets cannot be modified without permission.

This datasheet has been download from :

www.AllDataSheet.com

100% Free DataSheet Search Site.

Free Download.

No Register.

Fast Search System.

www.AllDataSheet.com