

## INTRODUCTION:

Adam Tech Disk Drive Series connectors are so named for their original use in Disk Drives. Their familiar and reliable performance continues to make them a popular two piece connector interface for many other applications. This series offers both a wire mounted male and a PCB mounted header in straight or right angle mount. These mate to one of two types of wire mounted female housings. One with preloaded IDC contacts and the second with contacts crimped to wire and inserted into the blank female housing. Made with sturdy, precision engineered contacts they provide a high reliability, polarized, secure locking connector design.

## FEATURES:

Secure locking, Polarized design  
Wire to wire or Wire to board option  
High reliability contacts  
5 amp current rating

## MATING CONNECTORS:

This series mates with all industry standard disk drive connectors

## SPECIFICATIONS:

### Material:

Insulator: Nylon 66, rated UL94V-2  
Insulator Color: Natural  
Contacts: Brass, tin plated

### Electrical:

Operating voltage: 250V AC / DC max.  
Current rating: 5 Amps max  
Contact resistance: 20 mΩ max. Initial  
Insulation resistance: 1000 MΩ min.  
Dielectric withstanding voltage: 1500V AC for 1 minute

### Mechanical:

Insertion force: 4 lbs max  
Withdrawal force: 1.5 lbs min  
Mating durability: 500 Cycles min.

### Temperature Rating:

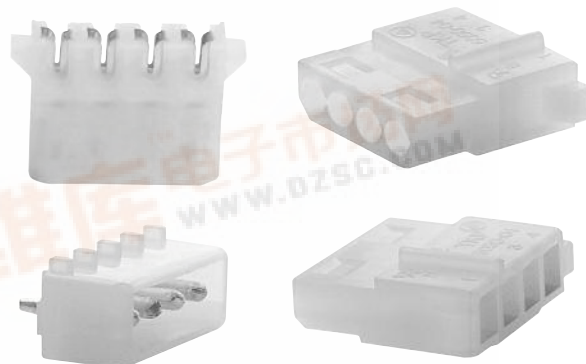
Operating temperature: -20°C to +120°C

### PACKAGING:

Anti-ESD plastic bags  
Contacts: 7000 pcs on reel

## SAFETY AGENCY APPROVALS:

UL Recognized File No. E224053  
CSA Certified File No. LR1578596



## ORDERING INFORMATION

DDH

04

### SERIES INDICATOR

DDH = Male, wire  
mount housing

DDF = Female, wire  
mount housing

DDS = Male, straight  
PC Board Mount

DDR = Male, right angle  
PC Board Mount

DFW = Female with Discrete  
IDC contacts

DFW-B = Cover, end mount

DFW-C = Cover, feed-thru

### POSITIONS

02 = 2 Positions

03 = 3 Positions

04 = 4 Positions

## CRIMP CONTACT

DMC

01

R

### CONTACT TYPE

DMC = Male crimp contact

DFC = Female crimp contact

### PACKAGING

R = 7,000 piece reel

B = 1,000 pieces

loose cut

### WIRE SIZE

01 = 22-18 AWG

