

LM3404/LM3404HV

查询 LM3404_08 供应商

Evaluation Board

National Semiconductor
Chris Richardson
January 7, 2008



Introduction

The LM3404/04HV is a buck regulator derived controlled current source designed to drive a series string of high power, high brightness LEDs (HBLEDs) such as the Luxeon™ K2 Emitter at forward currents of up to 1.0A. The board can accept an input voltage ranging from 6V to 42V when using the LM3404. When using the pin-for-pin compatible LM3404HV the upper bound of input voltage is 75V. The converter output voltage adjusts as needed to maintain a constant current through the LED array. The LM3404/04HV is a true step-down regulator with an output voltage range extending from a V_O (MIN) of 200 mV (the reference voltage) to a V_O (MAX) determined by the minimum off time (typically 300 ns). It can maintain regulated current through any number of LEDs as long as the combined forward voltage of the array does not exceed V_O (MAX).

Circuit Performance LM3404

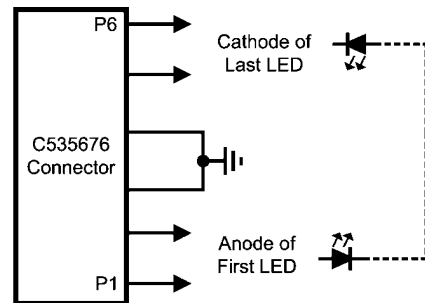
The LM3404 circuit and BOM have been designed to provide a constant forward current of 1.0A to a single LED with a forward voltage of approximately 3.7V (Typical of white, blue, and green LEDs using InGaN technology) from an input of 24V $\pm 10\%$. Over the input voltage range of 6V to 42V the average LED current, I_F , is 1.0A $\pm 10\%$, the ripple current, ΔI_F , will not exceed 400 mA_{P-P}, and the switching frequency is 450 kHz $\pm 10\%$.

Circuit Performance LM3404HV

The LM3404HV circuit and BOM have been designed to provide a constant forward current of 1.0A to a single LED with a forward voltage of approximately 3.7V from an input of 48V $\pm 10\%$. Over the input voltage range of 6V to 75V the average LED current, I_F , is 1.0A $\pm 10\%$, the ripple current, ΔI_F , will not exceed 400 mA_{P-P}, and the switching frequency is 200 kHz $\pm 10\%$.

Connecting to LED Array

The LM3404/04HV Evaluation Board includes a female 6-pin SIP, **J1**, connector as well as two standard 94mil turret connectors for the cathode and anode connections of the LED array. Figure 1 shows the pinout of **J1**. Solid 18 or 20 gauge wire with about 1 cm of insulation stripped away makes a convenient, solderless connection to **J1**.



20215901

FIGURE 1.

Setting the LED Current

The default forward current I_{LED} delivered to the LED array is 1.0A, typical of many 3W LEDs. To adjust this value the current setting resistor R_{SNS} can be changed according to the following equation:

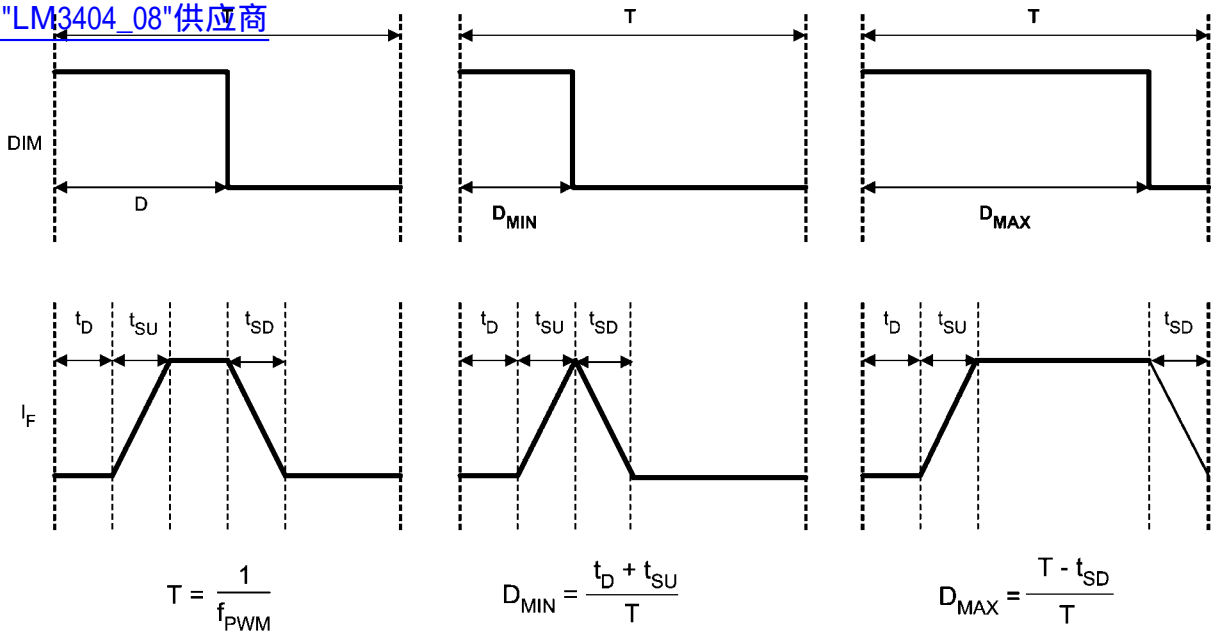
$$R_{SNS} = \frac{0.2 \times L}{I_F \times L + V_O \times t_{SNS} - \frac{V_{IN} - V_O}{2} \times t_{ON}}$$

$$t_{SNS} = 220 \text{ ns}$$

This resistor should be rated to handle the power dissipation of the LED current. For example, the closest 5% tolerance resistor to set an LED current of 1.0A is 0.22 Ω . In steady state this resistor will dissipate $(1.0 \times 0.22) = 220 \text{ mW}$, indicating that a resistor with a 1/4W power rating is appropriate.

PWM Dimming

The **DIM1** terminal on the PCB provides an input for a pulse width modulation signal for dimming of the LED array. In order to fully enable and disable the LM3404/04HV the PWM signal should have a maximum logic low level of 0.8V and a minimum logic high level of 2.2V. The maximum PWM dimming frequency, minimum PWM duty cycle and maximum duty cycle are illustrated in Figure 2. PWM frequency should be at least one order of magnitude below the LM3404/04HV switching frequency. The interval t_D represents the delay from a logic high at the DIM pin to the onset of the output current. The quantities t_{SU} and t_{SD} represent the time needed for the output current to slew up to steady state and slew down to zero, respectively. Typical response times for the standard LM3404 and LM3404HV demo boards circuits are shown in the Typical Performance Characteristics section.

[查询"LM3404_08"供应商](#)


20215902

FIGURE 2. PWM Dimming Limits

The logic of **DIM1** is direct, hence the LM3404/04HV will deliver regulated output current when the voltage at **DIM1** is high, and the current output is disabled when the voltage at **DIM1** is low. Connecting a constant logic low will disable the output, and the LM3404/04HV is enabled if the DIM pin is open-circuited. The **DIM1** function disables only the power MOSFET, leaving all other circuit blocks functioning to minimize the converter response time.

The **DIM2** terminal provides a second method for PWM dimming by connecting to the gate of an optional MOSFET, **Q1**. Note that **Q1** is not provided on the standard BOM, and must be added for the **DIM2** function to operate. **Q1** provides a parallel path for the LED current. This small MOSFET can be turned on and off much more quickly than the LM3404/04HV can shutdown the internal MOSFET, providing faster response time for higher frequency and/or greater resolution in the PWM dimming signal. The trade-off in this method is that the full current flows through **Q1** while the LED is off, resulting in lower efficiency.

The logic of **DIM2** is inverted, hence the LM3404/04HV will deliver regulated output current when the voltage at **DIM2** is low, and the current output is disabled when the voltage at **DIM2** is high. Connecting a constant logic high to the **DIM2** will turn off the LED but will not shut down the LM3404/04HV.

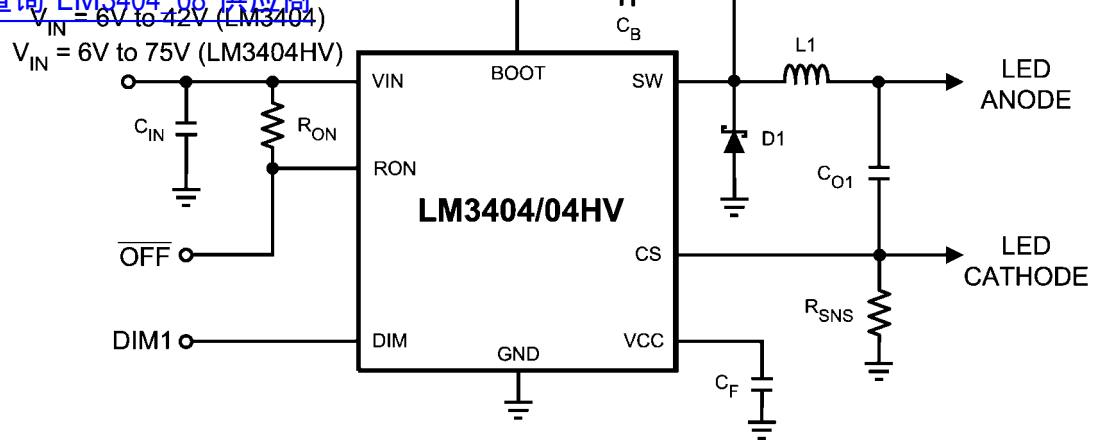
Low Power Shutdown

The LM3404/04HV can be placed into a low power shutdown (typically 90 μ A) by grounding the **OFF*** terminal. During normal operation this terminal should be left open-circuit.

Output Open Circuit

With either DIM terminal floating or connected to logic high, the LM3404/04HV will begin to operate as soon as it has an input of at least 6V. In the case that the input is powered but no LED array is connected the output voltage will rise to equal the input voltage. The output of the circuit is rated to 50V (LM3404) or 100V (LM3404HV) and will not suffer damage, however care should be taken not to connect an LED array if the output voltage is higher than the target forward voltage of the LED array in steady state. Alternatively, a zener diode and zener current limiting resistor can be placed in the positions **Z1** and **R_Z**. In the case of an accidental open circuit at the output **Z1** will enter reverse bias and attempt to pull the CS pin voltage up to the output voltage. An internal comparator monitors the CS pin voltage and will disable the internal MOSFET in this case. The result is a low power hiccup mode, designed to prevent excessive voltage at the output and thermal stress on the inductor, internal MOSFET, and input voltage source.

[查询"LM3404_08"供应商](#)



20215904

FIGURE 3. Standard Schematic

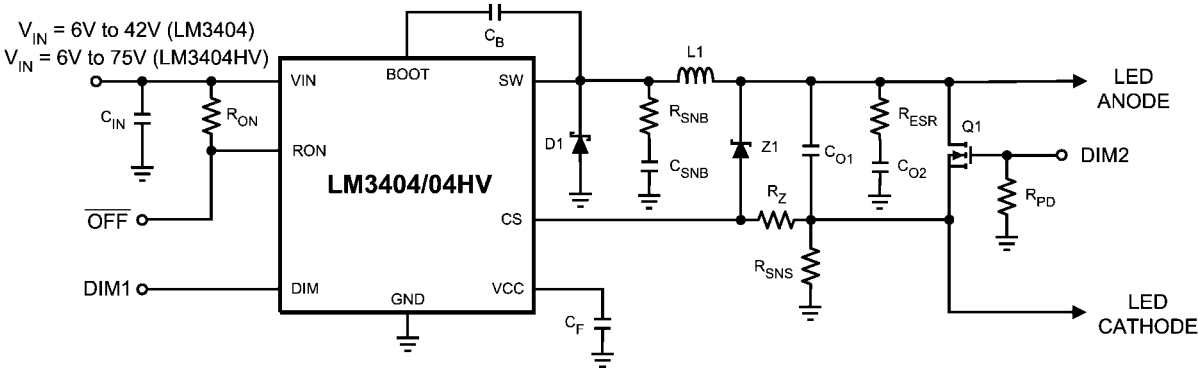
TABLE 1. BOM 1 (LM3404)

| ID | Part Number | Type | Size | Parameters | Qty | Vendor |
|---|--------------------|----------------|---------------------|------------------|-----|--------------|
| U1 | LM3404 | LED Driver | SO-8 | 42V, 1.0A | 1 | NSC |
| L1 | SLF10145T- 330M1R6 | Inductor | 10.1 x 10.1 x 4.5mm | 33μH, 1.6A, 82mΩ | 1 | TDK |
| D1 | CMSH2-60M | Schottky Diode | SMA | 60V, 2A | 1 | Central Semi |
| Cf | VJ0805Y104KXXAT | Capacitor | 0805 | 100nF 10% | 1 | Vishay |
| Cb | VJ0805Y103KXXAT | Capacitor | 0805 | 10nF 10% | 1 | Vishay |
| Cin | C3225X7R1H335M | Capacitor | 1210 | 3.3μF, 50V | 1 | TDK |
| Rsns | ERJ8BQFR22V | Resistor | 1206 | 0.22Ω 1% | 1 | Panasonic |
| Ron | CRCW08056812F | Resistor | 0805 | 68.1kΩ 1% | 1 | Vishay |
| Rz | CRCW08050R00F | Resistor | 0805 | 0Ω | 1 | Vishay |
| DIM1, DIM2, OFF* | 160-1512 | Terminal | 0.062" | | 3 | Cambion |
| GND1, GND2, GND3, VIN, Vo/LED+, CS/LED- | 160-1026 | Terminal | 0.094" | | 6 | Cambion |
| J1 | 535676-5 | Connector | Custom | 6 Pins | 1 | Tyco/AMP |

[查询"LM3404 08"供应商](#)

TABLE 2. BOM 2 (LM3404HV)

| ID | Part Number | Type | Size | Parameters | Qty | Vendor |
|--|--------------------|----------------|---------------------|------------------|-----|--------------|
| U1 | LM3404HV | LED Driver | MSOP-8 | 75V, 0.5A | 1 | NSC |
| L1 | SLF12555T- 680M1R3 | Inductor | 12.5 x 12.5 x 5.5mm | 68μH, 1.3A, 83mΩ | 1 | TDK |
| D1 | CMSH2-100 | Schottky Diode | SMB | 100V, 2A | 1 | Central Semi |
| Cf | VJ0805Y104KXXAT | Capacitor | 0805 | 100nF 10% | 1 | Vishay |
| Cb | VJ0805Y103KXXAT | Capacitor | 0805 | 10nF 10% | 1 | Vishay |
| Cin | C4532X7R2A225M | Capacitor | 1812 | 2.2μF, 100V | 1 | TDK |
| Co1 | C3216X7R2A105M | Capacitor | 1206 | 1.0μF, 100V | 1 | TDK |
| Rsns | ERJ8BQFR22V | Resistor | 1206 | 0.22Ω 1% | 1 | Panasonic |
| Ron | CRCW08051743F | Resistor | 0805 | 174kΩ 1% | 1 | Vishay |
| Rz | CRCW08050R00F | Resistor | 0805 | 0Ω | 1 | Vishay |
| DIM1, DIM2, OFF* | 160-1512 | Terminal | 0.062" | | 3 | Cambion |
| GND1, GND2, GND3, VIN, Vo/ LED+, CS/LED- | 160-1026 | Terminal | 0.094" | | 6 | Cambion |
| J1 | 535676-5 | Connector | Custom | 6 Pins | 1 | Tyco/AMP |



20215905

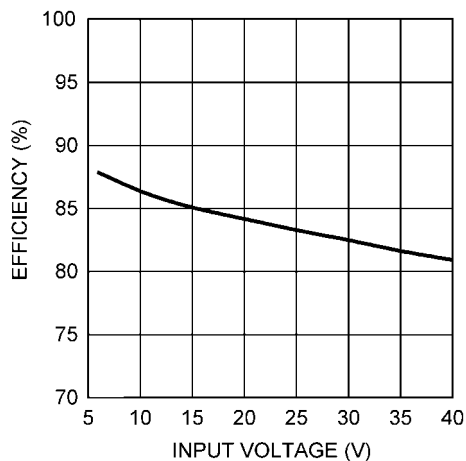
FIGURE 4. Complete Evaluation Board Schematic

Typical Performance Characteristics

[查询"LM3404_08"供应商](#)

Efficiency for Table 1

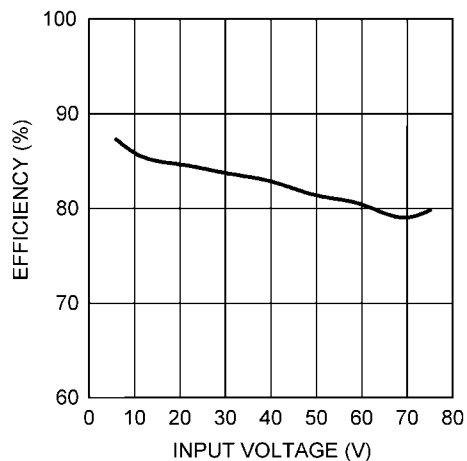
$T_A = 25^\circ\text{C}$, $I_F = 1.0\text{A}$



20215908

Efficiency for Table 2

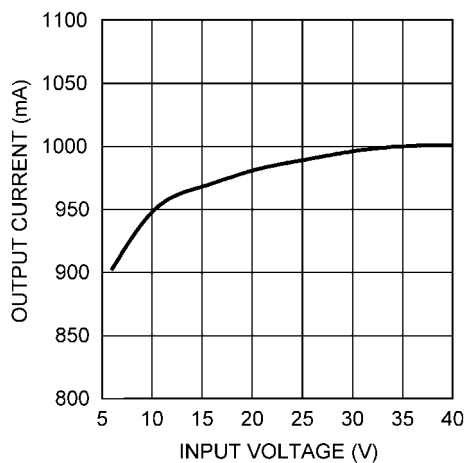
$T_A = 25^\circ\text{C}$, $I_F = 1.0\text{A}$



20215909

I_F vs V_{IN} for Table 1

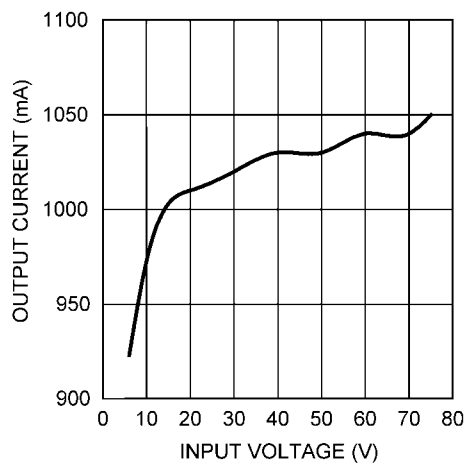
$T_A = 25^\circ\text{C}$



20215910

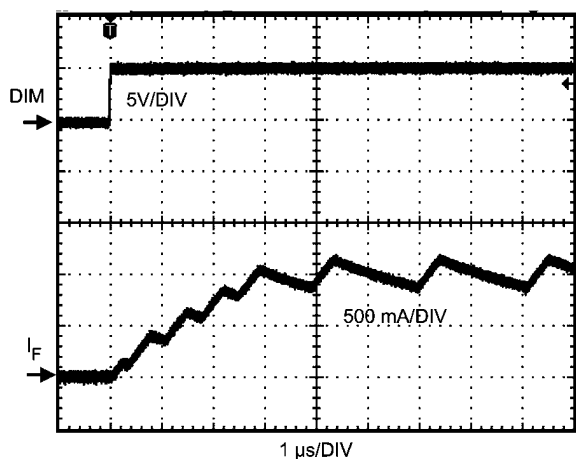
I_F vs V_{IN} for Table 2

$T_A = 25^\circ\text{C}$



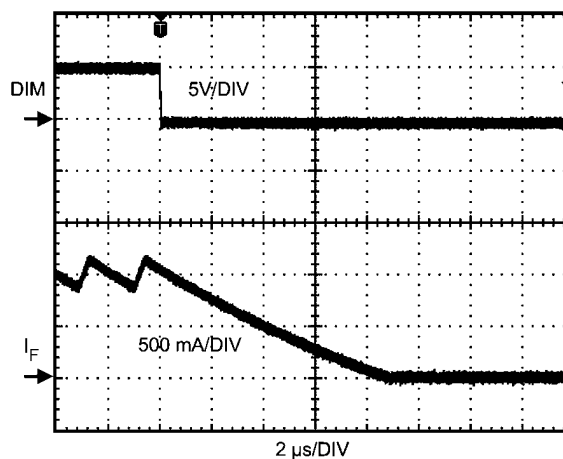
20215911

DIM Pin Enable for Table 1



20215912

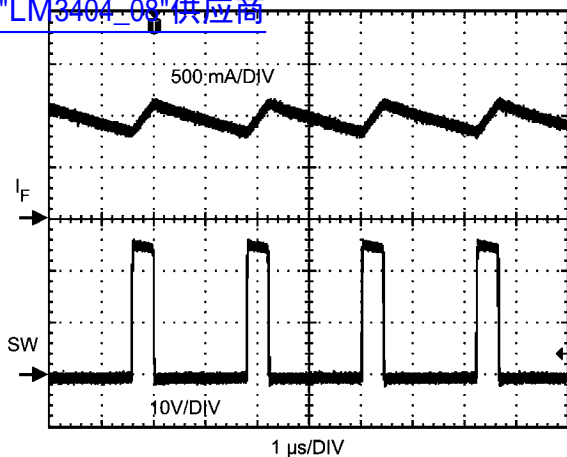
DIM Pin Disable for Table 1



20215913

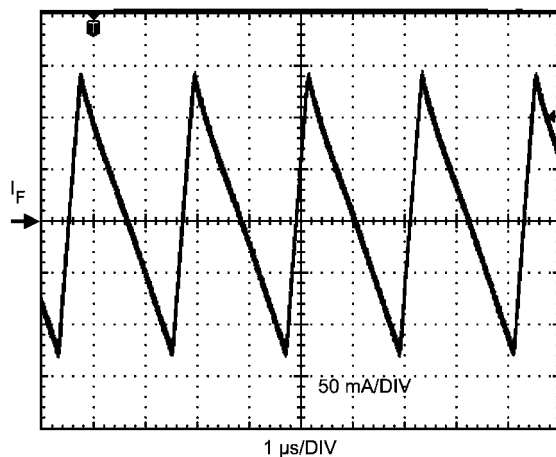
查询"LM3404-08"供应商

Switching Waveforms for Table 1



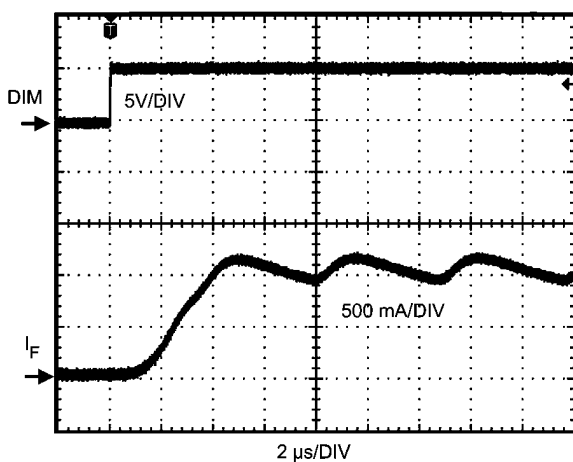
20215914

Output Ripple Current for Table 1



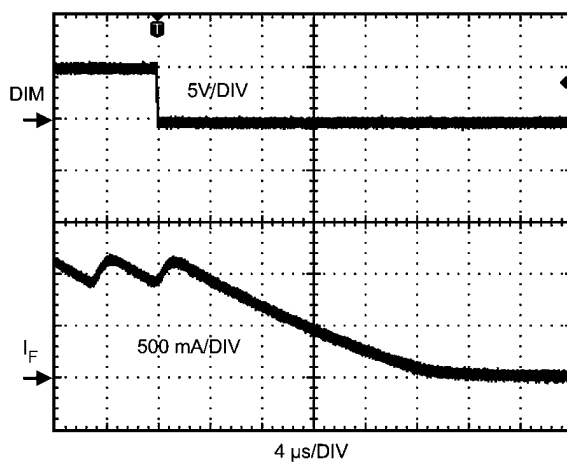
20215915

DIM Pin Enable for Table 2



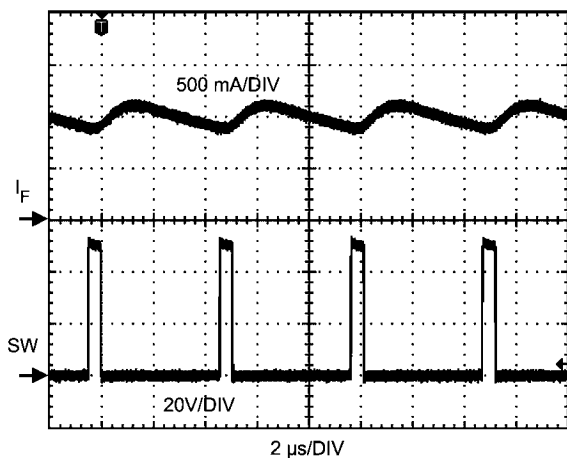
20215916

DIM Pin Disable for Table 2



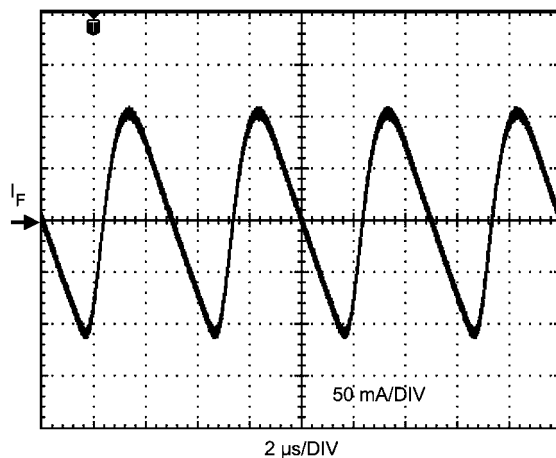
20215917

Switching Waveforms for Table 2



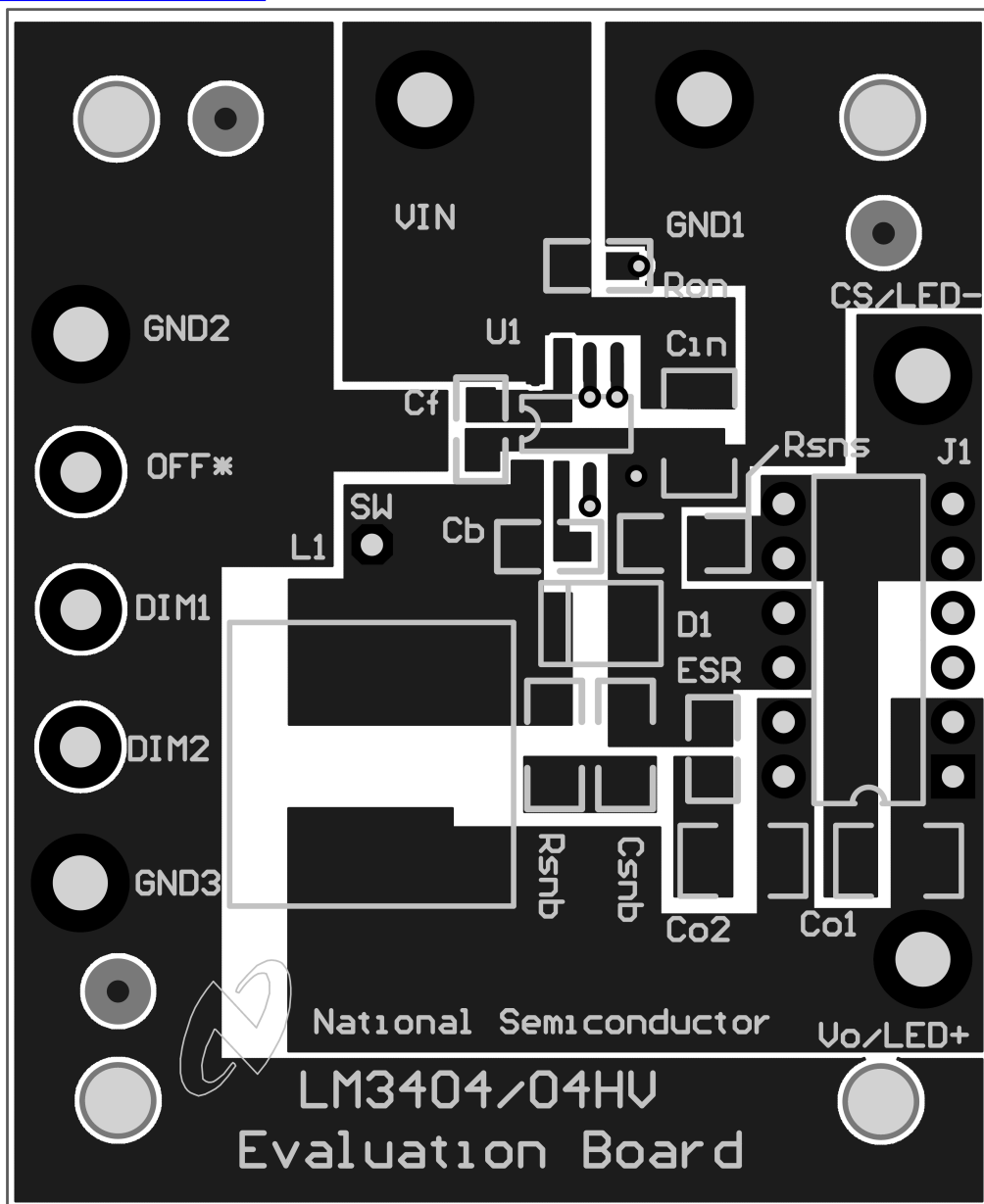
20215918

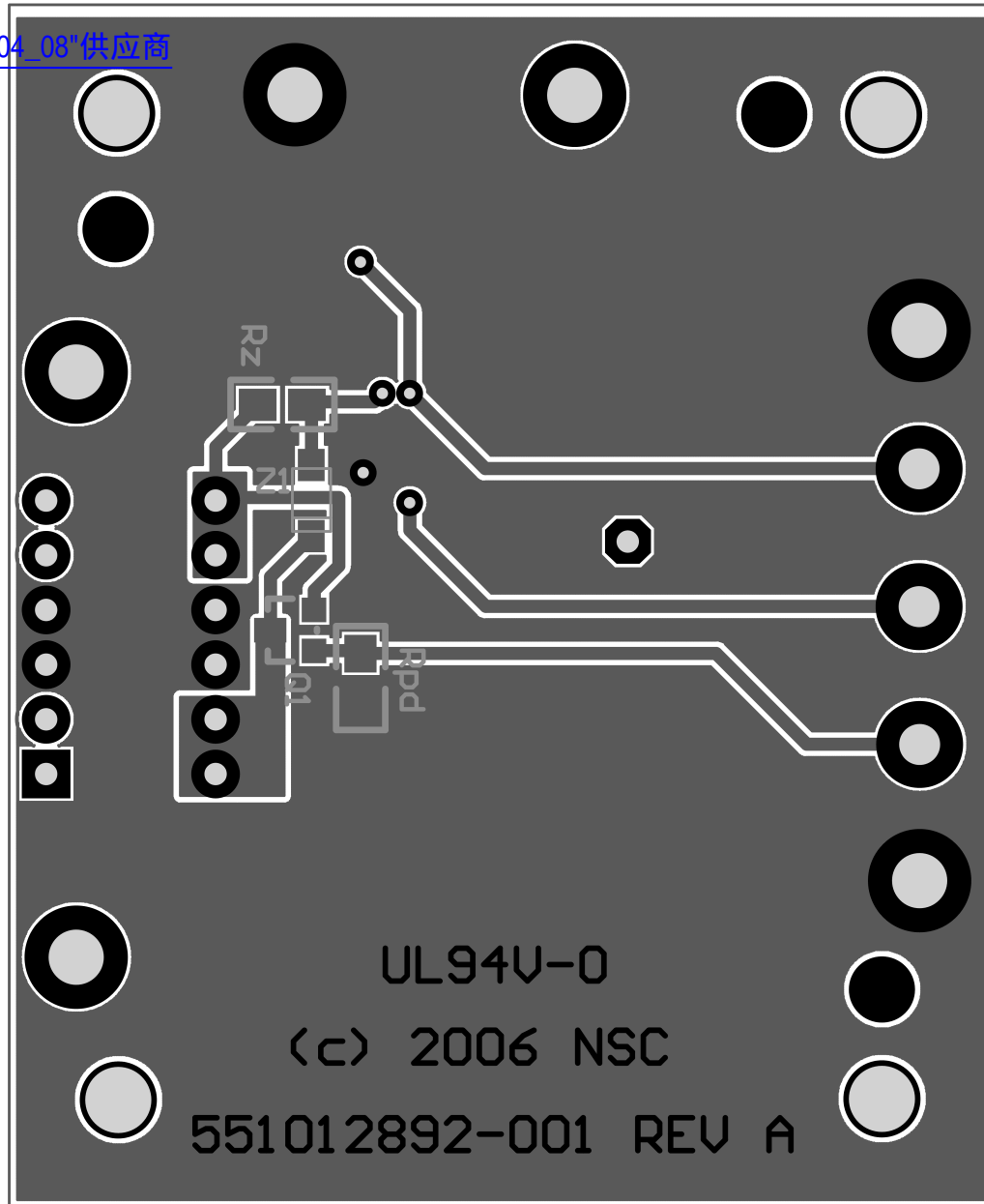
Output Ripple Current for Table 2



20215919

Layout

[查询"LM3404_08"供应商](#)

[查询"LM3404_08"供应商](#)

Bottom Layer and Bottom Overlay

20215907

[查询"LM3404_08"供应商](#)

Notes

[查询"LM3404_08"供应商](#)

Notes

For more National Semiconductor product information and proven design tools, visit the following Web sites at:

| Products | | Design Support | |
|--------------------------------|--|-------------------------|--|
| Amplifiers | www.national.com/amplifiers | WEBENCH | www.national.com/webench |
| Audio | www.national.com/audio | Analog University | www.national.com/AU |
| Clock Conditioners | www.national.com/timing | App Notes | www.national.com/appnotes |
| Data Converters | www.national.com/adac | Distributors | www.national.com/contacts |
| Displays | www.national.com/displays | Green Compliance | www.national.com/quality/green |
| Ethernet | www.national.com/ethernet | Packaging | www.national.com/packaging |
| Interface | www.national.com/interface | Quality and Reliability | www.national.com/quality |
| LVDS | www.national.com/lvds | Reference Designs | www.national.com/refdesigns |
| Power Management | www.national.com/power | Feedback | www.national.com/feedback |
| Switching Regulators | www.national.com/switchers | | |
| LDOs | www.national.com/lldo | | |
| LED Lighting | www.national.com/led | | |
| PowerWise | www.national.com/powerwise | | |
| Serial Digital Interface (SDI) | www.national.com/sdi | | |
| Temperature Sensors | www.national.com/tempsensors | | |
| Wireless (PLL/VCO) | www.national.com/wireless | | |

THE CONTENTS OF THIS DOCUMENT ARE PROVIDED IN CONNECTION WITH NATIONAL SEMICONDUCTOR CORPORATION ("NATIONAL") PRODUCTS. NATIONAL MAKES NO REPRESENTATIONS OR WARRANTIES WITH RESPECT TO THE ACCURACY OR COMPLETENESS OF THE CONTENTS OF THIS PUBLICATION AND RESERVES THE RIGHT TO MAKE CHANGES TO SPECIFICATIONS AND PRODUCT DESCRIPTIONS AT ANY TIME WITHOUT NOTICE. NO LICENSE, WHETHER EXPRESS, IMPLIED, ARISING BY ESTOPPEL OR OTHERWISE, TO ANY INTELLECTUAL PROPERTY RIGHTS IS GRANTED BY THIS DOCUMENT.

TESTING AND OTHER QUALITY CONTROLS ARE USED TO THE EXTENT NATIONAL DEEMS NECESSARY TO SUPPORT NATIONAL'S PRODUCT WARRANTY. EXCEPT WHERE MANDATED BY GOVERNMENT REQUIREMENTS, TESTING OF ALL PARAMETERS OF EACH PRODUCT IS NOT NECESSARILY PERFORMED. NATIONAL ASSUMES NO LIABILITY FOR APPLICATIONS ASSISTANCE OR BUYER PRODUCT DESIGN. BUYERS ARE RESPONSIBLE FOR THEIR PRODUCTS AND APPLICATIONS USING NATIONAL COMPONENTS. PRIOR TO USING OR DISTRIBUTING ANY PRODUCTS THAT INCLUDE NATIONAL COMPONENTS, BUYERS SHOULD PROVIDE ADEQUATE DESIGN, TESTING AND OPERATING SAFEGUARDS.

EXCEPT AS PROVIDED IN NATIONAL'S TERMS AND CONDITIONS OF SALE FOR SUCH PRODUCTS, NATIONAL ASSUMES NO LIABILITY WHATSOEVER, AND NATIONAL DISCLAIMS ANY EXPRESS OR IMPLIED WARRANTY RELATING TO THE SALE AND/OR USE OF NATIONAL PRODUCTS INCLUDING LIABILITY OR WARRANTIES RELATING TO FITNESS FOR A PARTICULAR PURPOSE, MERCHANTABILITY, OR INFRINGEMENT OF ANY PATENT, COPYRIGHT OR OTHER INTELLECTUAL PROPERTY RIGHT.

LIFE SUPPORT POLICY

NATIONAL'S PRODUCTS ARE NOT AUTHORIZED FOR USE AS CRITICAL COMPONENTS IN LIFE SUPPORT DEVICES OR SYSTEMS WITHOUT THE EXPRESS PRIOR WRITTEN APPROVAL OF THE CHIEF EXECUTIVE OFFICER AND GENERAL COUNSEL OF NATIONAL SEMICONDUCTOR CORPORATION. As used herein:

Life support devices or systems are devices which (a) are intended for surgical implant into the body, or (b) support or sustain life and whose failure to perform when properly used in accordance with instructions for use provided in the labeling can be reasonably expected to result in a significant injury to the user. A critical component is any component in a life support device or system whose failure to perform can be reasonably expected to cause the failure of the life support device or system or to affect its safety or effectiveness.

National Semiconductor and the National Semiconductor logo are registered trademarks of National Semiconductor Corporation. All other brand or product names may be trademarks or registered trademarks of their respective holders.

Copyright© 2008 National Semiconductor Corporation

For the most current product information visit us at www.national.com



**National Semiconductor
Americas Technical
Support Center**
Email:
new.feedback@nsc.com
Tel: 1-800-272-9959

**National Semiconductor Europe
Technical Support Center**
Email: europe.support@nsc.com
German Tel: +49 (0) 180 5010 771
English Tel: +44 (0) 870 850 4288

**National Semiconductor Asia
Pacific Technical Support Center**
Email: ap.support@nsc.com

**National Semiconductor Japan
Technical Support Center**
Email: jpn.feedback@nsc.com