

AC Filter

[查询"5500.2045"供应商](#)

### Description

- Chassis:  
Screw-on mounting, from top
- Line-filter in standard version, 1-stage, standard attenuation
- Quick connect terminals 6.3 x 0.8 mm
- Excellent price/performance ratio

### Approvals

- VDE License Number: 40004673
- UL License Number: E72928

### Characteristics

- Designed for high current applications
- Compact design
- Protection against interference voltage from the mains  
Possible interferences generated in the equipment are strongly attenuated
- For standard and industrial applications
- Qualified for use in equipment according IEC/EN 60950

### References

[General Product Information](#)

### Weblinks

[Approvals](#), [RoHS](#), [CHINA-RoHS](#), [Mating Connectors](#), [e-Store](#), [Distributor-Stock-Check](#), [Accessories](#)

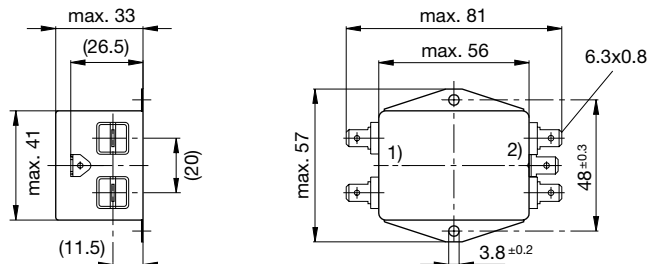
### Technical Data

Ratings IEC	10 - 20 A @ Ta 40 °C / 250 VAC; 50 Hz
Ratings UL/CSA	10 - 20 A @ Ta 40 °C / 125 VAC; 60 Hz
Leakage Current	industrial < 2.1 mA (250 V / 60 Hz)
Dielectric Strength	> 1.7 kVDC between L-N > 2.7 kVDC between L/N-PE Test voltage (2 sec)
Allowable Operation Temp.	-25 °C to 100 °C
Climatic Category	25/100/21 acc. to IEC 60068-1
Protection Class	Suitable for appliances with protection class 1 acc. to IEC 61140
Terminal	Quick connect terminals 6.3 x 0.8 mm
Material: Housing	Alu. anodised

Line Filter	Standard and Industrial Version, IEC 60939, IEC 60601-1, UL 1283, UL 544, EN 133 200, CSA C22.2 no. 8 <a href="#">Technical details</a>
MTBF	> 200'000 h acc. to MIL-HB-217 F

### Dimensions

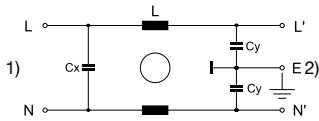
Case 10



- 1) Line  
2) Load

[查询"5500.2045"供应商](#)  
**Diagrams**

Standard version

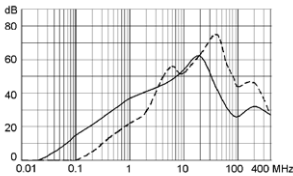


- 1) Line
- 2) Load

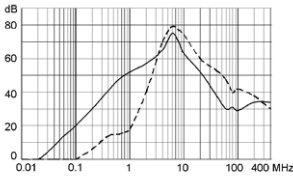
**Attenuation Loss**

Standard version  
10 A

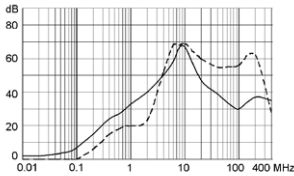
- - - differential mode    \_\_\_\_ common mode



Industrial Version  
10 A



20 A



**Variants**

Rated Current [A]	Filter-Type	Leakage Cur- rent [mA]	L [mH]	Cx (X2) [nF]	Cy (Y2) [nF]	Weight [g]	Housing	Order Number
10	Standard Version	0.25	2 x 1	68	2.2	160	10	5500.2045
10	Industrial Version	2.1	2 x 1	68	22	140	10	5500.2046
20	Industrial Version	2.1	2 x 0.15	68	22	140	10	5500.2047

**Packaging unit**    10 Pcs