

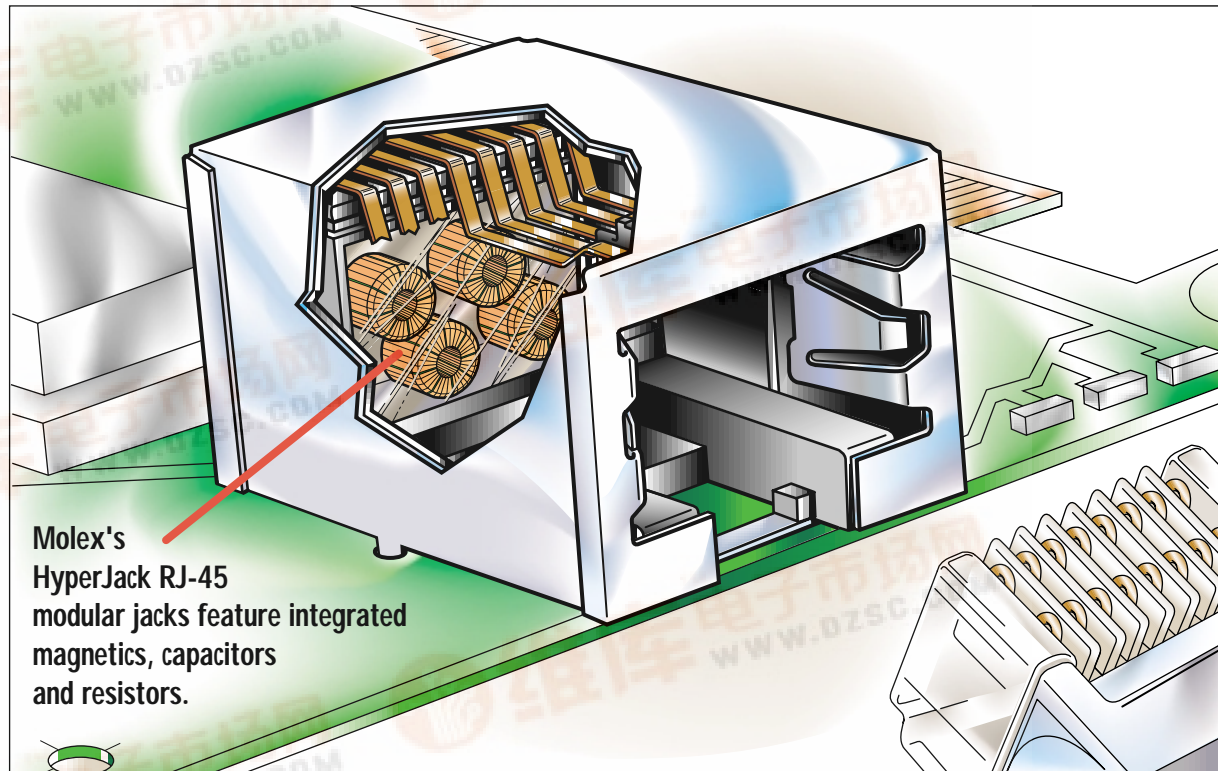
FEATURES AND SPECIFICATIONS

molex® Modular Jack HyperJack™

[查询"85533"供应商](#)

Features and Benefits

- Trade name for Molex, RJ-45 Jack that includes wire wound components (magnetics)
- Used for local area networks (LANs) or wide area networks (WANs) with Ethernet 10 Base T or 100 Base T characteristics
- Transformers are used in every port to enable series signal isolation of the transmission lines
- Common mode chokes are incorporated in the same transformer core to achieve a better signal-to-noise ratio
- Magnetics are used for common mode noise rejection, DC insulation of cable side versus the board side and possible transforming of LH signal
- Resistors and/or capacitors are incorporated to terminate noise from the non used pair
- An overmolded installation box in the jack is used to mount, solder, pot magnetics, resistors, and capacitors during high volume production



FEATURES AND SPECIFICATIONS

查询"85533"供应商

Features and Benefits

- Integrated magnetics, capacitors and resistors for space savings and reduced components on the motherboard
- Eases logistics
- Flexible magnetic design adapts to physical specifications from any vendor
- EMI/RFI protection includes common mode chokes
- Full magnetic performance suitable for UTP and STP applications
- Symmetrical RX/TX design can be used on PCB or hub side

Reference Information

Product Specification: PS-85533-017

Packaging: Tray

Mates with: FCC 68 Plugs

Designed in: Millimeters

Electrical

Voltage: 125V

Current: 1.5A

Contact Resistance: 20mΩ max.

Dielectric Withstanding Voltage: 1500V

Insulation Resistance: 500 MΩ min.

OCL (TX, RX): 400μH min.

Electrical (continued)

Insertion Loss (TX, RX): 0.1 to 100 MHz -1dB max.

Return Loss (TX, RX):

0.5 to 30 MHz -18 dB min.
40 MHz -15.5 dB min.
50 MHz -13.6 dB min.
60 to 80 MHz -12 dB min.

Common Mode Rejection (TX, RX):

1 to 30 MHz -50 dB min.
60 MHz -37 dB min.
100 MHz -28 dB min.

Crosstalk TX-RX (NEXT):

1 to 30 MHz -42 dB min.
60 MHz -38 dB min.
100 MHz -35 dB min.

Isolation (Hi-Pot): 1500V AC or 2250V DC

Physical

Housing: Black polyester, UL 94V-0

Contact: Phosphor Bronze

Plating: Contact Area—Post plate 1.27 to 1.52μm

(50 to 60μ") Gold

Solder Tail Area—1.90μm (75μ") min. Tin/Lead

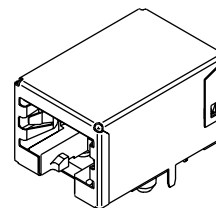
Underplating—Nickel

Operating Temperature: -40 to +80°C

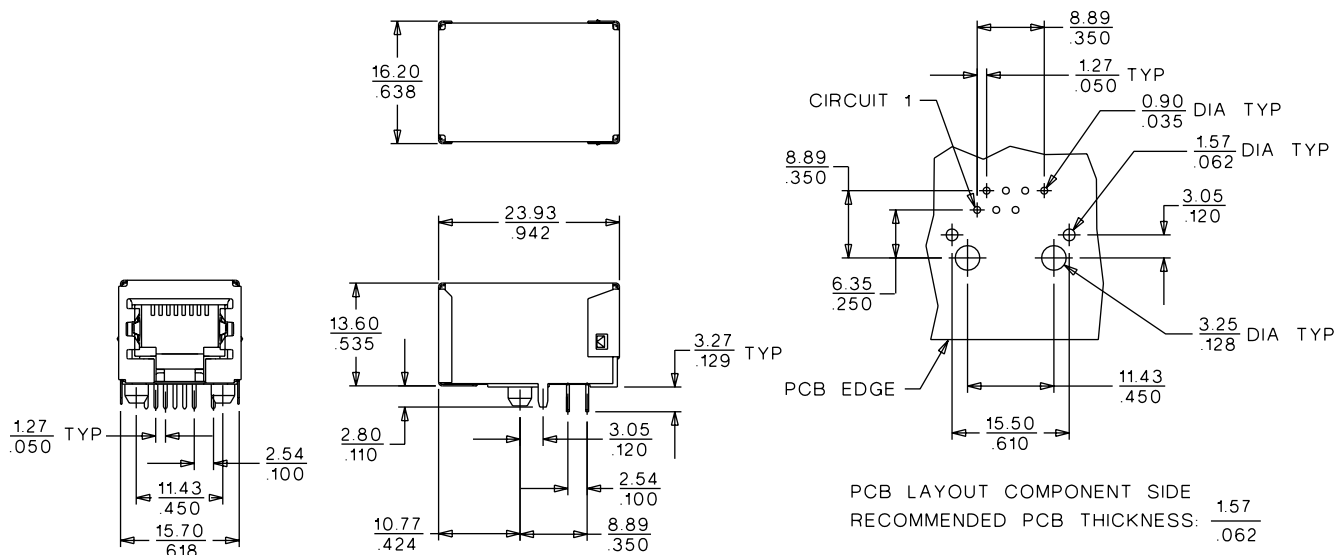
molex® Modular Jack
HyperJack™

85533

**Right Angle
Shielded**



CATALOG DRAWING (FOR REFERENCE ONLY)



ORDERING INFORMATION

Circuits	Loaded Contacts	Order No.
8	8	85533-0002

Americas Headquarters

Lisle, Illinois 60532 U.S.A.

Tel: 1-800-78MOLEX

Fax: 630-969-1352

Far East North Headquarters

Yamato, Kanagawa, Japan

Tel: 81-462-65-2324

Fax: 81-462-65-2366

Far East South Headquarters

Jurong, Singapore

Tel: 65-268-6868

Fax: 65-265-6044

European Headquarters

Munich, Germany

Tel: 49-89-413092-0

Fax: 49-89-401527

Corporate Headquarters

2222 Wellington Ct.

Lisle, IL 60532 U.S.A.

Tel: 630-969-4550

Visit our Web site at <http://www.molex.com>