

KR Series 2395 Bandpass Filter

General Description

KR 2395 is a 70 MHz center frequency elliptic bandpass filters supplied in a surface mount package. The filter has high selectivity, symmetry and high stopband attenuation. Other center frequencies and bandwidths are available. Please consult the factory.

Features

- 70 MHz center frequency
- Elliptic bandpass filter
- Surface mount package
- Excellent symmetry
- High stopband attenuation

Typical Performance

Passband & Group Delay
(1 dB/div & 10 nsec/div) 61.5 MHz to 78.5 MHz

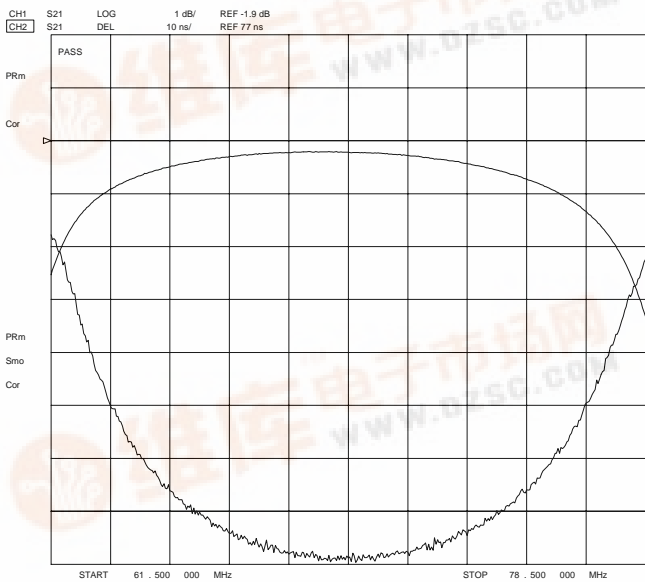


Figure 1

Overall Response
(10 dB/div) Center 70 MHz Span 125 MHz

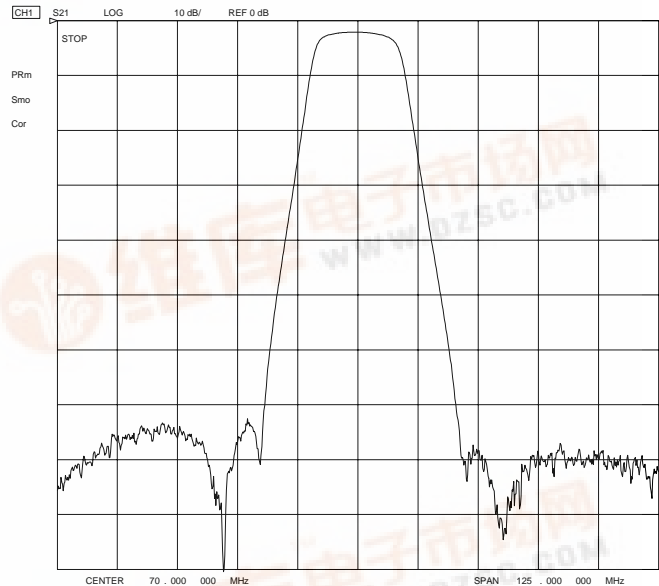


Figure 2

KR Electronics, Inc.
91 Avenel Street
Avenel, NJ 07001

Web www.krfilters.com
Email sales@krfilters.com
Phone (732) 636-1900
Fax (732) 636-1982

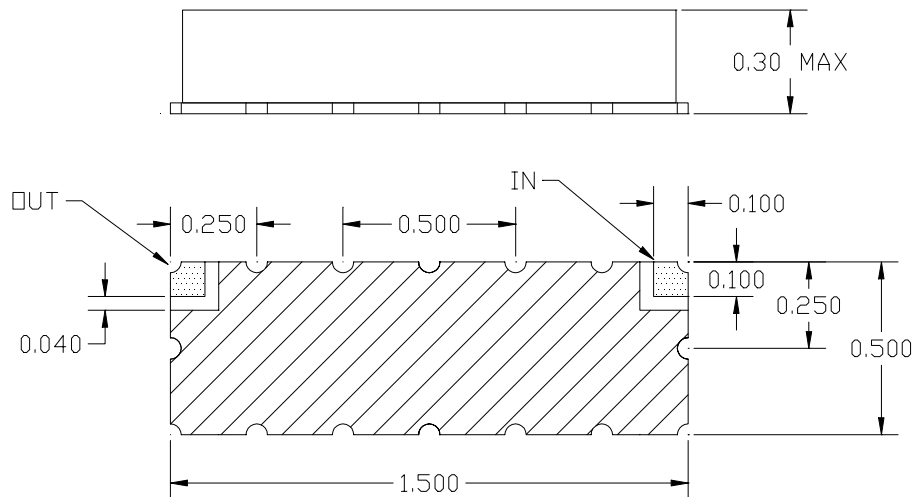


KR Series 2395 Bandpass Filter

Specifications

Parameter	Specification
Filter type	Bandpass
Center Frequency (fc)	70 MHz
1 dB Bandwidth (BW _{1dB})	12 MHz min
55 dB Bandwidth (BW _{55dB})	40 MHz max
Impedance	75 Ω

Physical Dimensions



Notes:

1. Surface mount package — Metal cover, open frame
2. Dimensions in inches
3. Use SN60 or SN63 solder during installation
4. If boards are cleaned after installation, units must be completely dried to remove any entrapped moisture that will effect electrical performance