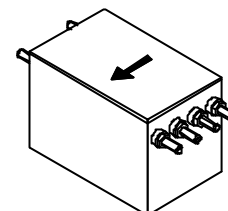


Current Transducer CT 1-T

$$I_{PN} = 1 \text{ A}$$

For very accurate measurements of currents : DC, AC, pulsed..., with a galvanic isolation between the primary circuit (high power) and the secondary circuit (electronic circuit).



Electrical data

I_{PN}	Primary nominal r.m.s. current	1	A
I_p	Primary current, measuring range	0 .. ± 2	A
V_{OUT}	Analog output voltage	5	V
K_N	Conversion ratio	1 A / 5 V	
R_L	Load resistance	> 500	Ω
C_L	Capacitance loading	≤ 5	nF
t_C	Output short-circuit duration ¹⁾	∞	s
V_C	Supply voltage ($\pm 5\%$)	± 15	V
I_C	Current consumption	$40 + V_{OUT}/R_L$	mA
V_d	R.m.s. voltage for AC isolation test, 50 Hz, 1 mn	6	kV

Features

- Closed loop (compensated) current transducer
- Insulated plastic case recognized according to UL 94-V0
- Patent pending.

Advanced features

- $f = 500 \text{ kHz}$
- $X_G = \pm 0.25\% (-25^\circ\text{C} .. +70^\circ\text{C})$.

Accuracy - Dynamic performance data

X_G	Overall accuracy @ I_{PN}	-25°C .. +70°C	± 0.25	%
V_O	Offset voltage @ $I_p = 0$	$T_A = 25^\circ\text{C}$ -25°C .. +70°C	Typ	Max
				± 2.0 mV ± 3.0 mV
f	Frequency bandwidth (-3 dB) @ 50 % of I_{PN}		DC .. 500	kHz

Advantages

- Excellent accuracy
- Very good linearity
- Low temperature drift
- Optimized response time
- Wide frequency bandwidth
- No insertion losses
- High immunity to external interference
- Current overload capability.

General data

T_A	Ambient operating temperature	-25 .. +70	°C
T_S	Ambient storage temperature	-40 .. +85	°C
m	Mass	670	g
	Standards <input type="checkbox"/>	EN 50178	

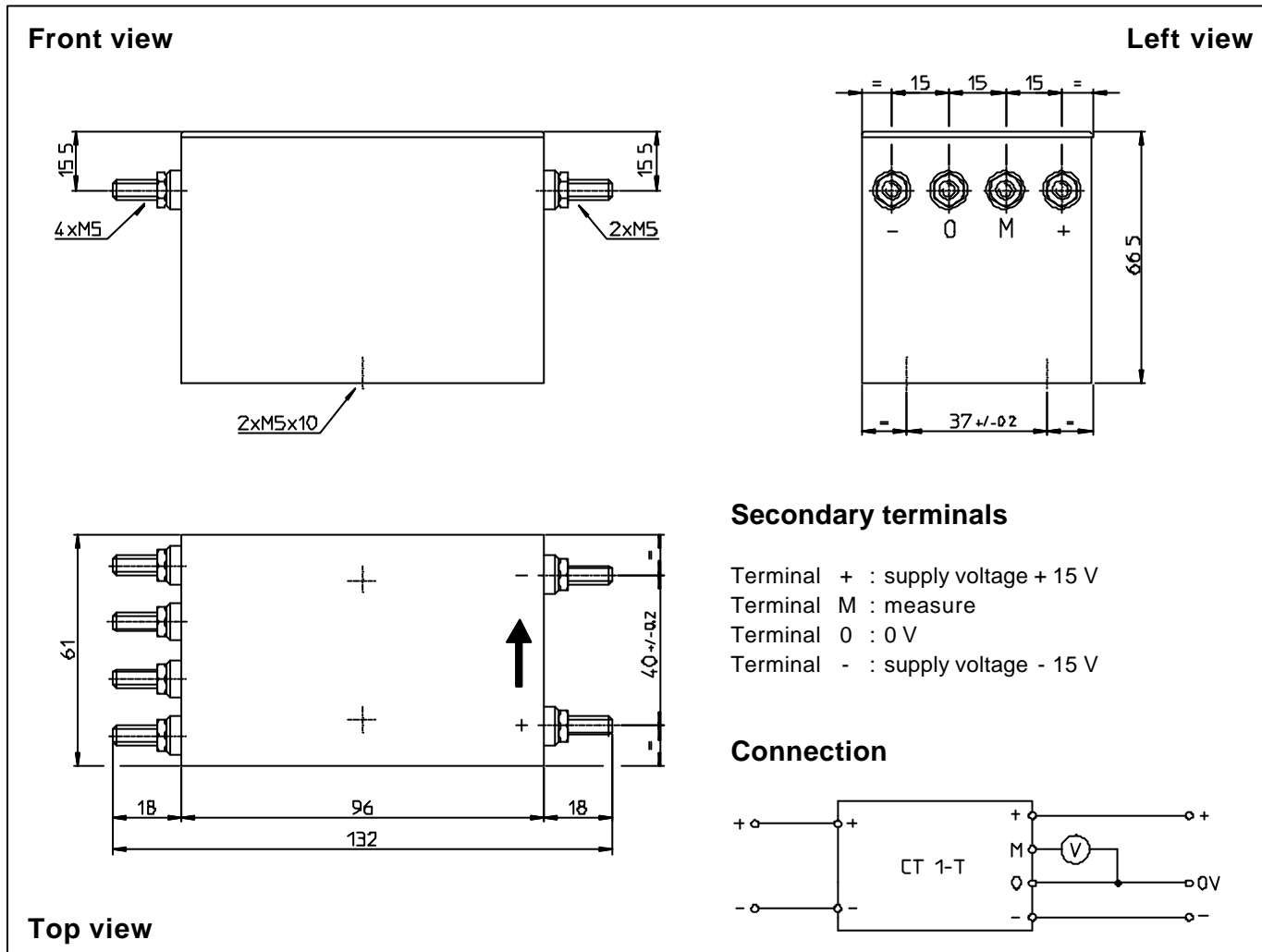
Applications

- AC variable speed drives and servo motor drives
- Static converters for DC motor drives
- Battery supplied applications
- Uninterruptible Power Supplies (UPS)
- Switched Mode Power Supplies (SMPS)
- Power supplies for welding applications.

Note : ¹⁾ If the short-circuit has a duration more than 1 s, the primary current of the supply voltage must be interrupted for a short time to restore the transducer to proper working order. The internal protection is done by PTC resistors.

030331/4

Dimensions CT 1-T (in mm. 1 mm = 0.0394 inch)



Mechanical characteristics

- | | |
|---------------------------|------------------------|
| • General tolerance | ± 0.3 mm |
| • Fastening | 2 x M5 screws |
| • Connection of primary | M5 threaded studs |
| • Connection of secondary | M5 threaded studs |
| Fastening torque max | 2.2 Nm or 1.62 Lb - Ft |

Remarks

- V_{OUT} is positive when I_p flows in the direction of the arrow.
- This transducer induces into the primary circuit a square wave of 70 mV amplitude (frequency » 220 Hz). This voltage can induce an AC current in the primary if the primary impedance is low.
- This is a standard model. For different versions (supply voltages, turns ratios, unidirectional measurements...), please contact us.