

710 453

## PREMIER PORTABLES - MODELS 3150, 3200, 3205, 4150, 4200 & 9200

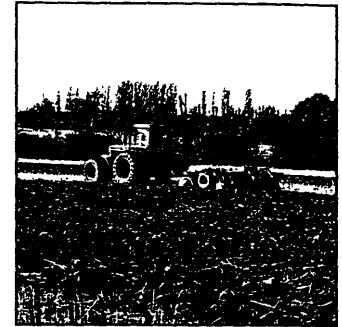
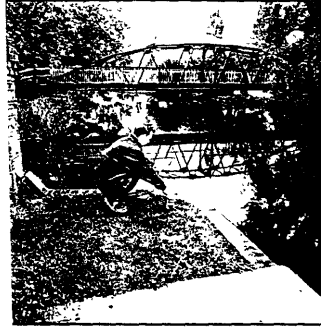
The Premier Portable range of products is designed to meet the exacting requirements of the professional analyst. The latest developments in sensor technology and signal processing have been incorporated into these state-of-the-art products, ensuring that accurate and reliable results are consistently obtained.

Six products are available in the Premier range: the Models 3150 and 3200 pH Meters, the Model 3205 Ion Meter, the Models 4150 and 4200 Conductivity Meter and the Model 9200 Dissolved Oxygen Meter.

### Portable and Waterproof

These products are designed and constructed to resist the harshest of field, laboratory and industrial environments. The *whole system* is waterproof to IP67 and if dropped into water will float.

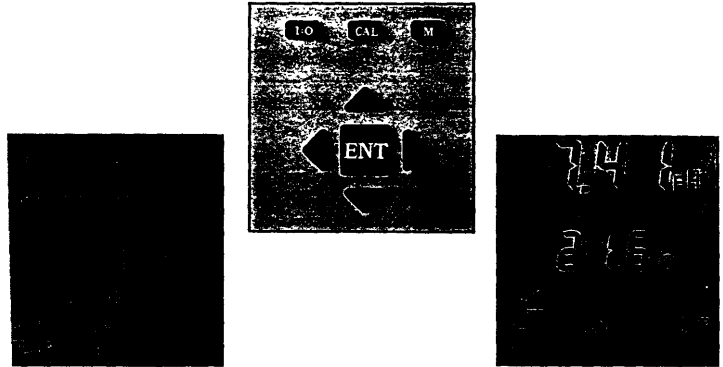
To increase flexibility an optional carrying case is available for field work, making the instruments ideal for on-site water quality measurement in a multitude of customer applications.



### Ease of Use

A fully sealed tactile keypad, menu driven operation for mode selection, diagnosis and measurement routines, and a choice of LCD formats, combine to give full flexibility and ease of use.

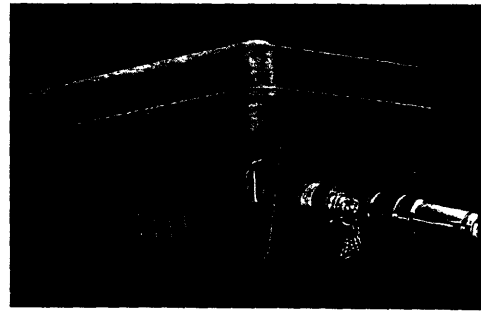
*A novice is guided; an experienced user gets straight to the result!*



### Waterproof Connectors

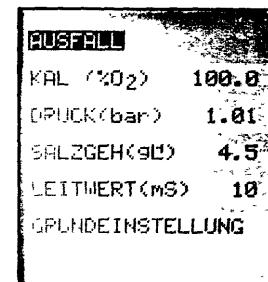
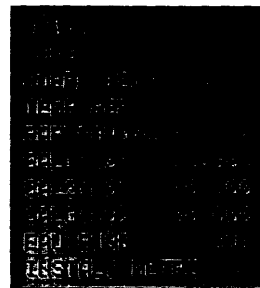
High quality connectors allow rapid interchangeability of electrodes, whilst maintaining waterproof integrity.

The connector incorporates a locking ring to guard against accidental disconnection and prevent ingress of moisture.



### Languages

The Models 3200, 3205, 4200 and 9200 feature a high resolution LCD graphics display giving clear user instructions in a choice of six languages (English, French, German, Italian, Spanish or Portuguese) as standard. Instruction manuals are available for each language option.

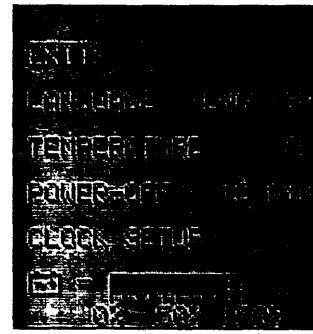


### Sensors

All sensors are fully integrated and incorporate an in-built temperature measuring device, thus eliminating the need for a second sensor or troublesome two stage measurements.

## Auto Shut-Off

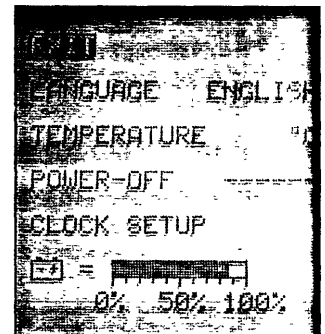
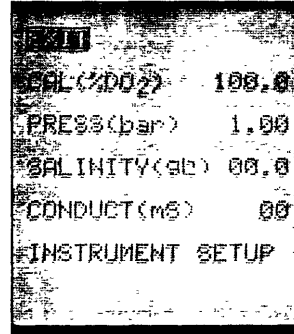
Power is provided by three AA size batteries giving typically 100 hours of use. An operator selectable auto shut-off feature ensures battery life is maximised. Automatic low battery warning is given when remaining battery life is approximately 5 hours (@ 20°C).



## Set-Up Menus

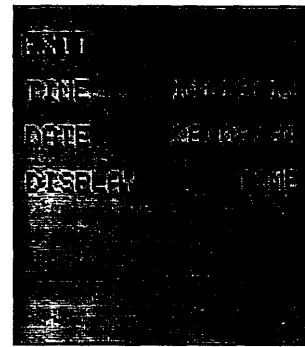
Set-up menus are provided on the Models 3200, 3205, 4200 and 9200 to give access to all user defined options. The menu is three tiered allowing:

- Calibration parameters entry
- Selection of instrument settings such as language, temperature and auto shut-off
- Estimate of remaining battery life
- In-built real time clock set-up



## GLP Compliant

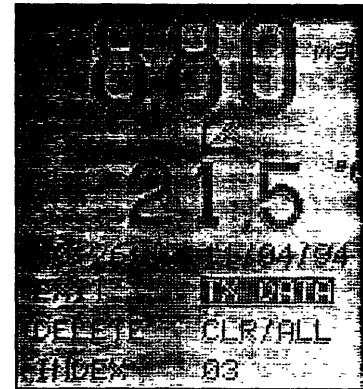
All products within the range fully satisfy the requirements of Good Laboratory Practices (GLP). Product performance is continually monitored and resulting messages are clearly displayed. The results of the calibration processes may be logged and later recalled onto the instrument display using the data logging protocols.



In addition, the Models 3200, 3205, 4200 and 9200 will date and time stamp all results and calibrations.

## Interfacing

All Premier Portables are capable of storing 100 results. In addition, the Models 3200, 3205, 4200 and 9200 offer the facility to download data held in memory to a printer or computer. These units incorporate an infra-red data link which, when used in conjunction with the optional interface cradle, allow bi-directional data interchange without the inconvenience of plugs and sockets. Refer pages 14 & 15 for full information.



## Quality

All Jenway products are designed and manufactured under stringent quality control conditions within an ISO 9001 environment.

The Premier Portables comply fully with EEC and US directives relating to ESD/EMC emission and susceptibility.

