

# KBPC25005~KBPC2510

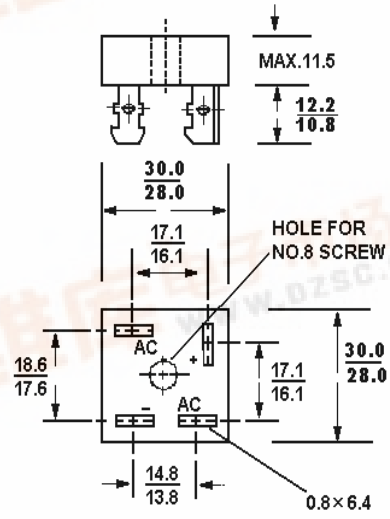
[查询"KBPC25005"供应商](#)

## HIGH CURRENT SINGLE-PHASE SILICON BRIDGE RECTIFIERS REVERSE VOLTAGE: 50V to 1000V FORWARD CURRENT: 25A

KBPC

### Features

- Surge overload 300 Amperes peak
- Low power loss, high efficiency
- Low reverse leakage current



Dimensions in mm

### Absolute Maximum Ratings and Characteristics

Rating at 25°C ambient temperature unless otherwise specified. resistive or inductive load 60 Hz.,  
For capacitive load current by 20%.

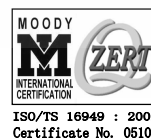
Characteristic	KBPC 25005	KBPC 2501	KBPC 2502	KBPC 2504	KBPC 2506	KBPC 2508	KBPC 2510	Units
Maximum Recurrent Peak Reverse Voltage	50	100	200	400	600	800	1000	V
Maximum RMS Voltage	35	70	140	280	420	560	700	V
Maximum DC Blocking Voltage	50	100	200	400	600	800	1000	V
Maximum Average Forward Rectified Current at $T_C = 55^\circ\text{C}$	25							A
Peak Forward Surge Current, 8.3ms single half Sine-wave superimposed on rated load	300							A
Maximum Forward Voltage at 12.5A DC and 25°C	1.2							V
Maximum Reverse Current at $T_A = 25^\circ\text{C}$ at Rated DC Blocking Voltage $T_A = 125^\circ\text{C}$	10 1000							$\mu\text{A}$
Typical Junction Capacitance (Note 1)	300							pF
Typical Thermal Resistance (Note 2)	1.9							$^\circ\text{C}/\text{W}$
Operating Temperature Range $T_J$	-55 to +125							$^\circ\text{C}$
Storage Temperature Range $T_S$	-55 to +150							$^\circ\text{C}$

Notes: 1. Measured at 1 MHz and applied reverse voltage of 4.0VDC.

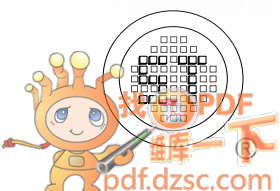
2. Thermal resistance from junction to case per leg.

## SEMTECH ELECTRONICS LTD.

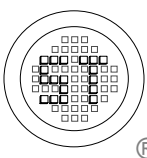
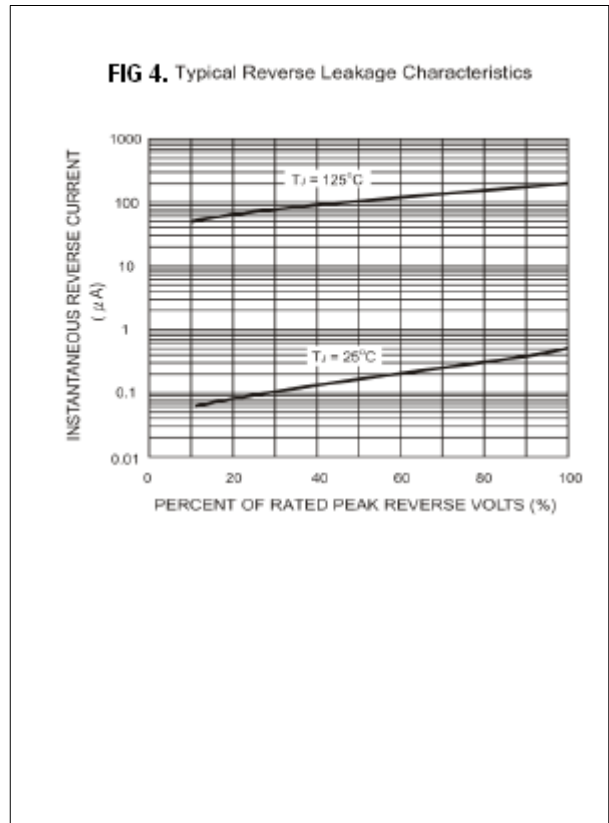
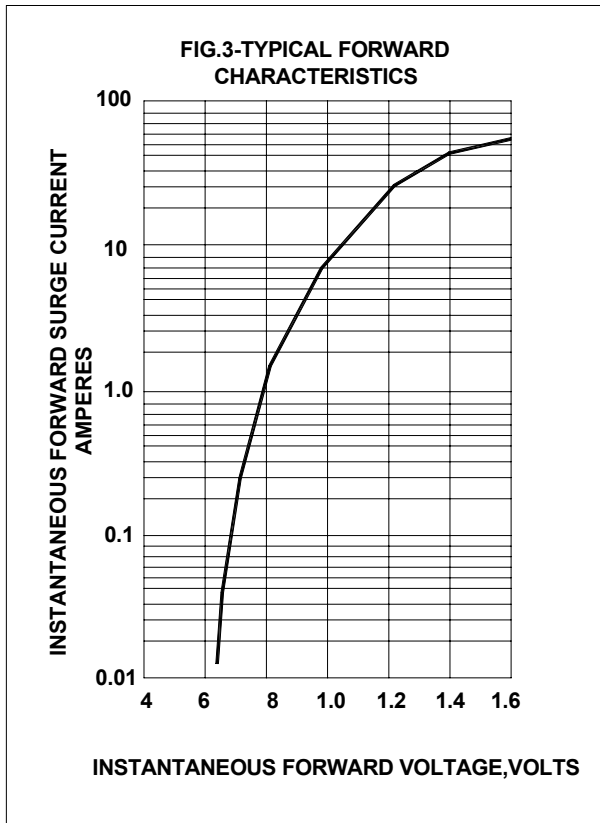
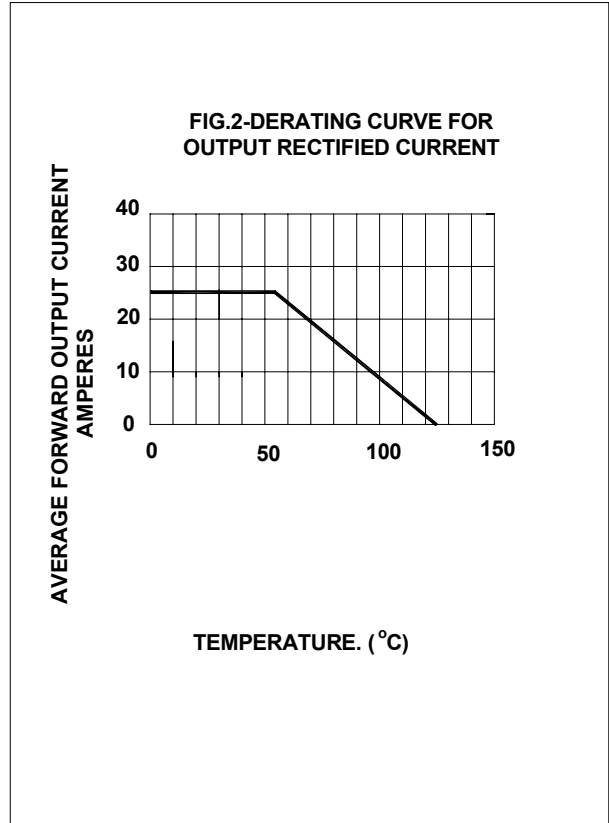
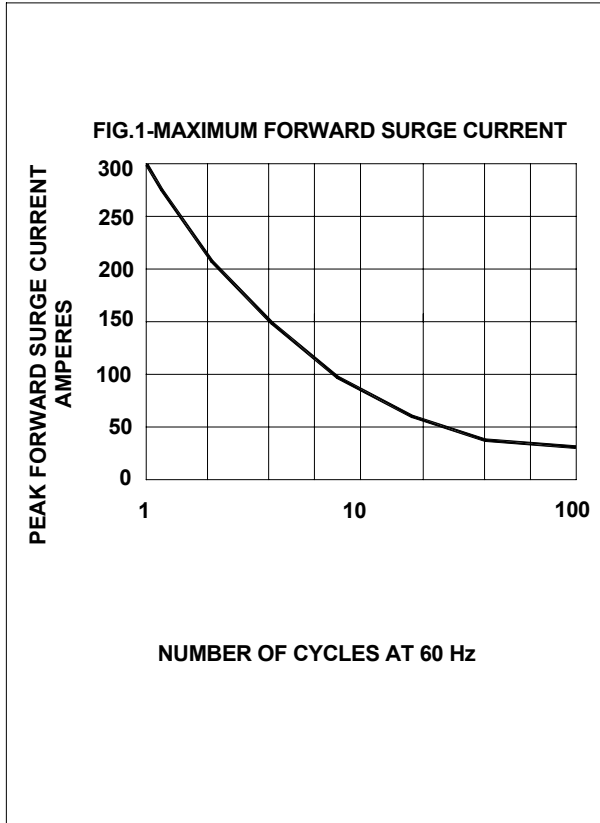
(Subsidiary of Semtech International Holdings Limited, a company listed on the Hong Kong Stock Exchange, Stock Code: 724)



Dated : 19/07/2005

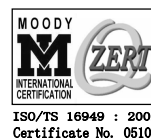


## RATINGS AND CHARACTERISTIC CURVES



**SEMTECH ELECTRONICS LTD.**

(Subsidiary of Semtech International Holdings Limited, a company listed on the Hong Kong Stock Exchange, Stock Code: 724)



ISO/TS 16949 : 2002  
Certificate No. 05103



ISO 14001  
Certificate No. 7116



ISO 9001 : 2000  
Certificate No. 5529-1999-02-02-02

Dated : 19/07/2005