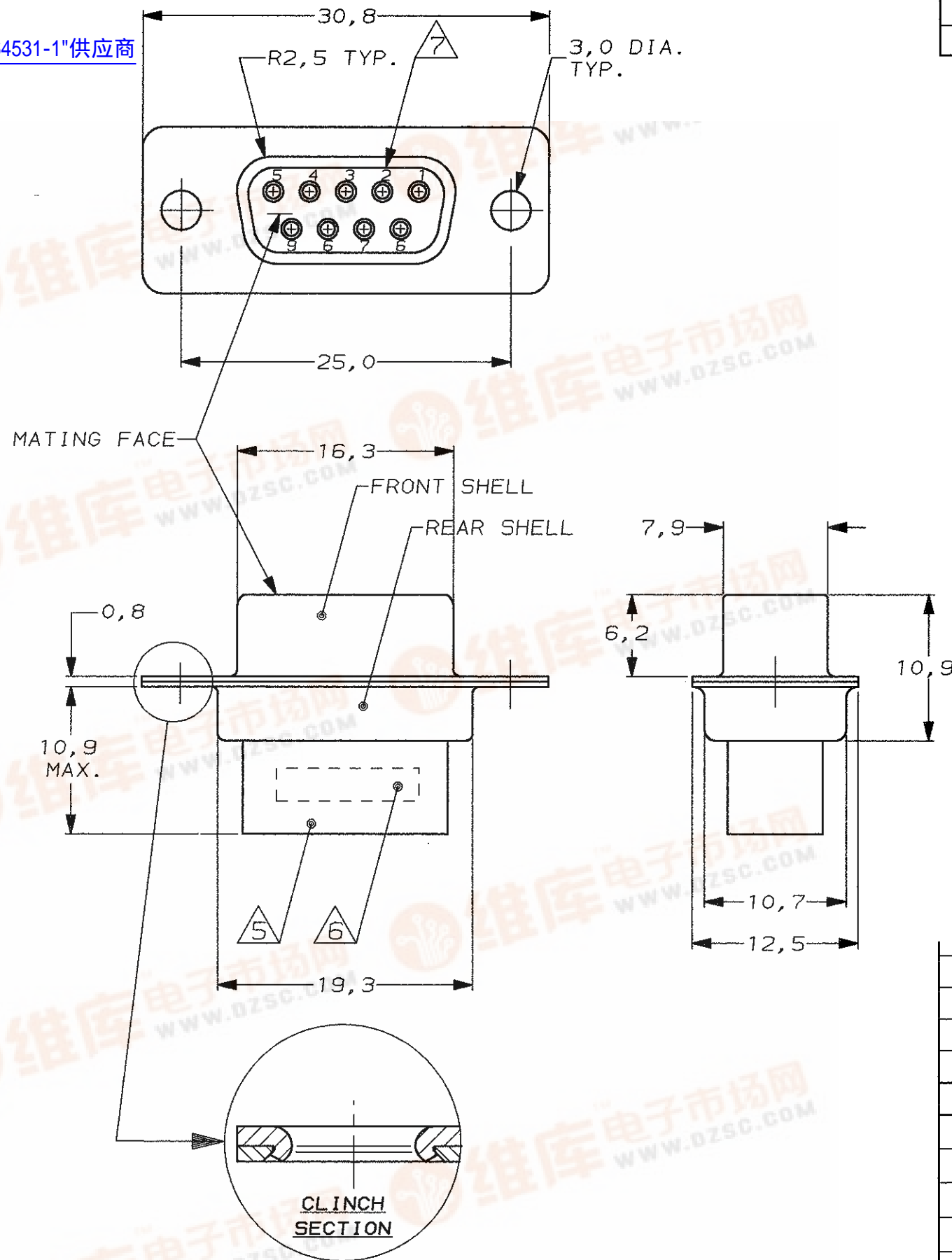


查询"164531-1"供应商

DO NOT SCALE
DIMENSIONS IN mm

METRIC

THIRD ANGLE
PROJECTION



NOTES:

- 1 THIS RECEPTACLE ACCEPTS SIZE 20 REC. CONTACTS.
- 2 MAXIMUM WIRE INSULATION RECOMMENDED FOR USE WITH THIS RECEPTACLE IS 1,73 DIA. MAX..
- 3 RETENTION TINES ARE AN INTEGRAL PART OF INSERT.
- 4 FOLLOWING INSERTION/REMOVAL TOOLS ARE RECOMMENDED FOR USE WITH THESE CONNECTORS:
 32-28AWG/28-24AWG CONTACTS
 91067-3 INSERTION/REMOVAL
 726363-1 INSERTION ONLY
 24-20AWG CONTACTS
 726363-1 INSERTION ONLY
 726364-1 REMOVAL ONLY
- 5 INSERTS: GLASSFILLED SELF-EXTINGUISHING PBT, COLOR BLACK.
- 6 AMP DATE CODE, AMP PART NUMBER, INK STAMPED.
- 7 RAISED CAVITY IDENTIFICATION 0,8 HIGH.

BRIGHT TIN	BRIGHT TIN	STEEL	164531-4
ZINC	BRIGHT TIN	STEEL	164531-3
-	-	-	-
ZINC	ZINC	STEEL	164531-1
PLATING FRONT SHELL	PLATING REAR SHELL	MATERIAL SHELLS	PARTNUMBER
-	-	-	CUSTOMER DRAWING FOR REFERENCE ONLY WILL NOT BE UPDATED
-	-	-	© COPYRIGHT 19-- BY AMP HOLLAND B.V. ALL INTERNATIONAL RIGHTS RESERVED. AMP PRODUCTS MAY BE COVERED BY U.S. AND FOREIGN AND/OR PATENTS PENDING. THIS DRAWING IS UNPUBLISHED RELEASED FOR PUBLICATION ,19--
-	-	-	AMP AMP HOLLAND B.V. 's-Hertogenbosch, The Netherlands.
H	EH-0314-99	D.K. W.S. 11 FEB 99	NAME 9 POS HDP-20 RECEPTACLE CONNECTOR SIZE 1
LTR.	REVISION RECORD	DR. CHK. DATE	
DR.: D. KESSLER	CHK.: W. SOOMERS	APP.: W. SOOMERS	DWG.No. C-164531
DATE: 11 FEB 99	DATE: -	DATE: -	REV.LTR. H SHEET 1 OF 1

7 6 5 4 3 2 1

A3