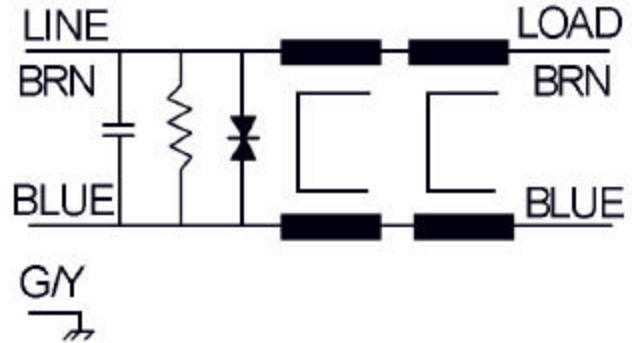




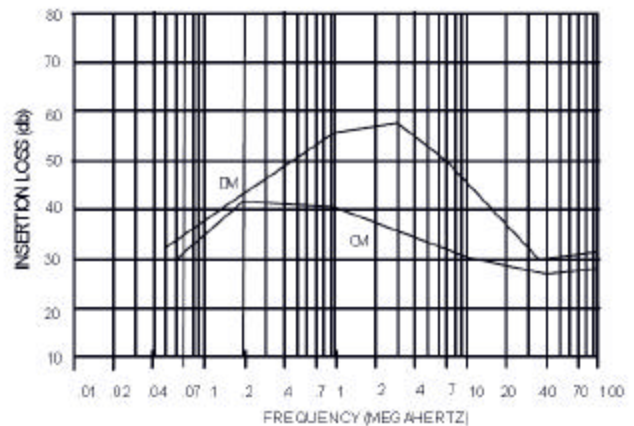
查询"B43254A2827M000"供应商

FF-1170-20

This filter is intended to provide very good insertion loss and transient protection. Mechanically the filter is intended to operate in severe temperature and vibration environments. This filter can be used in transportation vehicles such as buses, trucks, and trains.



Operating Voltage = 100 VDC
 Operating Current (Max) = 20 Amp @ 50oC
 15 Amp @ 70oC
 Temperature Range = -40 TO 50o C
 Diel. Withstand (Line - Case)= 1500 VAC For 1 Min
 Transient Protection = 130 VDC Nominal
 Transient Clamp = 123 - 137 VDC
 Leakage Current = NIL
 Discharge Volt. After 1 Sec= 31 Volts Max.



Order Part number:
 FF-1170-20

