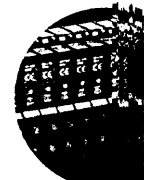


Manual

Port size	Function	Actuation	Mid position	Colour	Model	kg	Service kits	Drawing number
G1/8	3/2	Button/spring	-	Black	03 0404 02	0,15	03 8408 02	A, 12
G1/8	3/2	Button/spring	-	Green	03 0405 02	0,15	03 8408 02	A, 12
G1/8	3/2	Button/spring	-	Red	03 0406 02	0,15	03 8408 02	A, 12
G1/8	3/2	Button (palm)/spring	-	Red	03 0366 02	0,29	03 8408 02	A, 15
G1/8	3/2	Button (palm)/spring	-	Green	03 0367 02	0,29	03 8408 02	A, 15
G1/8	3/2	Button (palm)/spring	-	Black	03 0368 02	0,29	03 8408 02	A, 15
G1/8	3/2	Button (shrouded)/spring	-	Black	03 0414 02	0,21	03 8408 02	A, 13
G1/8	3/2	Button (shrouded)/spring	-	Green	03 0415 02	0,21	03 8408 02	A, 13
G1/8	3/2	Button (shrouded)/spring	-	Red	03 0416 02	0,21	03 8408 02	A, 13
G1/8	3/2	Button/pilot	-	Black	03 0408 02	0,22	03 8408 02	D, 12
G1/8	3/2	Button/pilot	-	Green	03 0420 02	0,22	03 8408 02	D, 12
G1/8	3/2	Button/pilot	-	Red	03 0421 02	0,22	03 8408 02	D, 12
G1/8	3/2	Emergency stop/twist ring	-	Red	03 0428 02	0,31	03 8473 02	A, 16
G1/8	3/2	Button (palm)/key	-	Red	03 0335 02 801	0,37	03 8408 02	A, 17
G1/8	3/2	Lever/spring	-	Black	03 0438 02	0,28	03 8408 02	A, 23
G1/8	3/2	Lever knob/spring	-	Black	03 0426 02	0,24	03 8408 02	A, 19
G1/8	3/2	Lever/lever	-	Black	03 0437 02	0,29	03 8408 02	A, 23
G1/8	3/2	Toggle/toggle	-	Black	03 0403 02	0,16	03 8408 02	A, 22
G1/8	3/2	Knob/knob	-	Black	03 0425 02	0,17	03 8408 02	A, 21
G1/8	3/2	Knob/knob or pilot	-	Black	03 0424 02	0,21	03 8408 02	D, 21
G1/8	3/2	Rotary knob/rotary knob	-	Black	03 0419 02	0,29	03 8408 052	A, 27
G1/8	3/2	Key/key	-	Chrome	03 0418 02 801	0,36	03 8408 02	A, 28
G1/8	3/2	Pedal/spring	-	Black	03 0481 02	1,03	03 8408 025	29
G1/8	3/2	Pedal/pedal	-	Black	03 0483 02	1,07	03 8408 02	29
G1/8	5/2	Button/spring	-	Black	X3 0444 02	0,26	03 8408 025	E, 12
G1/8	5/2	Button/spring	-	Green	X3 0445 02	0,26	03 8408 02	E, 12
G1/8	5/2	Button/spring	-	Red	X3 0446 02	0,26	03 8408 02	E, 12
G1/8	5/2	Button (palm)/spring	-	Red	X3 0386 02	0,40	03 8408 02	E, 15
G1/8	5/2	Button (palm)/spring	-	Green	X3 0387 02	0,40	03 8408 02	E, 15
G1/8	5/2	Button (palm)/spring	-	Black	X3 0388 02	0,40	03 8408 02	E, 15
G1/8	5/2	Button (shrouded)/spring	-	Black	X3 0454 02	0,32	03 8408 02	E, 13
G1/8	5/2	Button (shrouded)/spring	-	Green	X3 0455 02	0,32	03 8408 02	E, 13
G1/8	5/2	Button (shrouded)/spring	-	Red	X3 0456 02	0,32	03 8408 02	E, 13
G1/8	5/2	Button/pilot	-	Black	X3 0448 02	0,34	03 8408 02	G, 12
G1/8	5/2	Button/pilot	-	Green	X3 0460 02	0,34	03 8408 02	G, 12
G1/8	5/2	Button/pilot	-	Red	X3 0461 02	0,34	03 8408 02	G, 12
G1/8	5/2	Knob, push/knob, pull	-	Black	X3 0465 02	0,28	03 8408 02	E, 26
G1/8	5/2	Emergency stop/twist ring	-	Red	X3 0468 02	0,54	03 8473 02	E, 16
G1/8	5/2	Button (palm)/key	-	Red	X3 0375 02 801	0,48	03 8408 02	E, 17
G1/8	5/2	Lever/spring	-	Black	X3 0478 02	0,40	03 8408 02	E, 22
G1/8	5/2	Lever knob/spring	-	Black	X3 0466 02	0,35	03 8408 02	E, 19
G1/8	5/2	Toggle/toggle	-	Black	X3 0443 02	0,27	03 8408 02	E, 24
G1/8	5/2	Lever/lever	-	Black	X3 0477 02	0,40	03 8408 02	E, 23
G1/8	5/2	Knob/knob or pilot	-	Black	X3 0464 02	0,32	03 8408 02	G, 21
G1/8	5/2	Rotary knob/rotary knob	-	Black	X3 0459 02	0,40	03 8408 02	E, 27
G1/8	5/2	Key/key	-	Chrome	X3 0458 02 801	0,47	03 8408 02	E, 28
G1/8	5/2	Pedal/spring	-	Black	X3 0482 02	1,12	03 8408 02	29
G1/8	5/2	Pedal/pedal	-	Black	X3 0484 02	1,18	03 8408 02	29
Black	5/3	Lever/spring/lever	APB	Black	X3 3438 02	0,85	03 8408 02	See data sheet
G1/8	5/3	Lever/spring/lever	COE	Black	X3 3478 02	0,85	03 8408 02	See data sheet
G1/8	5/3	Lever/lever/lever	APB	Black	X3 3437 02	0,44	03 8408 02	See data sheet
G1/8	5/3	Lever/lever/lever	COE	Black	X3 3477 02	0,44	03 8408 02	See data sheet
G1/4	3/2	Button/spring	-	Black	03 0604 02	0,35	03 8602 02	B, 14
G1/4	3/2	Button/pilot	-	Black	03 0608 02	0,42	03 8612 02	D, 14
G1/4	3/2	Lever/spring	-	Black	03 0638 02	0,48	03 8602 02	B, 31
G1/4	3/2	Lever/lever	-	Black	03 0637 02	0,49	03 8602 02	B, 31
G1/4	3/2	Knob/knob	-	Black	03 0625 02	0,37	03 8602 02	B, 20
G1/4	3/2	Knob/knob or pilot	-	Black	03 0627 02	0,41	03 8612 02	D, 20
G1/4	3/2	Pedal/spring	-	Black	03 0681 02	1,23	03 8602 02	29
G1/4	3/2	Pedal/pedal	-	Black	03 0683 02	1,27	03 8602 02	29
G1/4	5/2	Button/spring	-	Black	X3 0644 02	0,47	03 8602 02	F, 14
G1/4	5/2	Button/pilot	-	Black	X3 0648 02	0,54	03 8612 02	H, 14
G1/4	5/2	Lever/spring	-	Black	X3 0678 02	0,60	03 8602 02	E, 31
G1/4	5/2	Lever/lever	-	Black	X3 0677 02	0,61	03 8602 02	E, 31
G1/4	5/2	Knob/knob	-	Black	X3 0665 02	0,49	03 8602 02	29
G1/4	5/2	Pedal/spring	-	Black	X3 0682 02	1,33	03 8602 02	29
G1/4	5/2	Pedal/pedal	-	Black	X3 0684 02	1,39	03 8602 02	See data sheet
G1/4	5/3	Lever/spring/lever	APB	Black	X3 3638 02	1,06	03 8602 02	See data sheet
G1/4	5/3	Lever/spring/lever	COE	Black	X3 3678 02	1,06	03 8602 02	See data sheet
G1/4	5/3	Lever/lever/lever	APB	Black	X3 3637 02	0,65	03 8602 02	See data sheet
G1/4	5/3	Lever/lever/lever	COE	Black	X3 3677 02	0,65	03 8602 02	See data sheet

APB = All Ports Blocked COE = Centre Open Exhaust

A16



Super X

Manually & mechanically actuated

In-line

3/2, 5/2 & 5/3, G $\frac{1}{8}$, G $\frac{1}{4}$

Electrical style adaptor valves

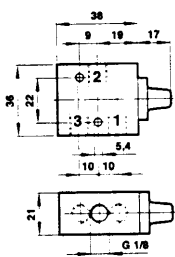
G1/8	3/2	Adaptor /Spring	03 0295 02	0,175	03 8408 02	A, 32
G1/8	5/2	Electrical style adaptor /Spring	X3 0395 02	0,250	03 8408 02	E, 33

Electrical style operators for use with adaptor valves

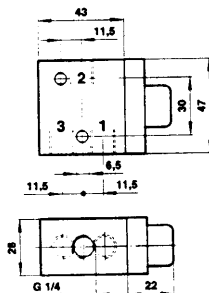
Button (palm)/Spring	Momentary action	Red	M/P 34840/R	34
Button (palm)/Spring	Momentary action	Green	M/P 34840/G	34
Button (palm)/Spring	Momentary action	Black	M/P 34840/N	34
Button (shrouded)/Spring	Momentary action	Red	M/P 34841/R	35
Button (shrouded)/Spring	Momentary action	Green	M/P 34841/G	35
Button (shrouded)/Spring	Momentary action	Black	M/P 34841/N	35
Button (mushroom)/Spring	Momentary action	Red	M/P 34842/R	36
Button (mushroom)/Spring	Momentary action	Green	M/P 34842/G	36
Button (mushroom)/Spring	Momentary action	Black	M/P 34842/N	36
Switch/Switch	Maintained action	-	M/P 34846	38
Rotary knob/Rotary knob	Maintained action	-	M/P 34843	39
Key/Key	Maintained action	-	M/P 34845	37

For dimensional details of operating heads see next page.

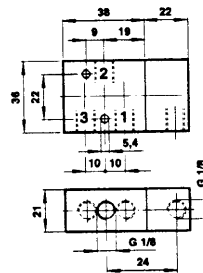
G1/8, 3/2 Spring return, basic body (A)



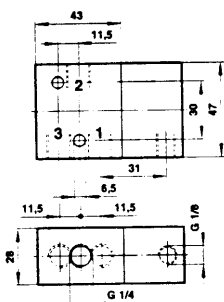
G1/4, 3/2 Spring return, basic body (B)



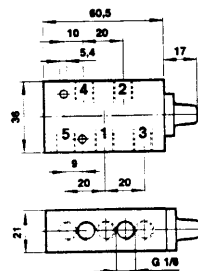
G1/8, 3/2 Pilot return, basic body (C)



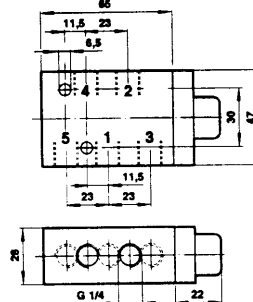
G1/4, 3/2 Pilot return, basic body (D)



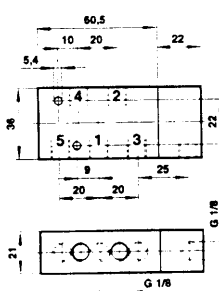
G1/8, 5/2 Spring return, basic body (E)



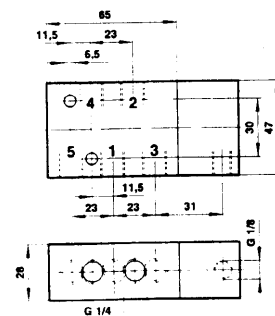
G1/4, 5/2 Spring return, basic body (F)



G1/8, 5/2 Pilot return, basic body (G)



G1/4, 5/2 Pilot return, basic body (H)



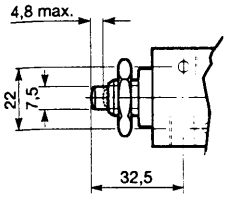
222

SUPER X

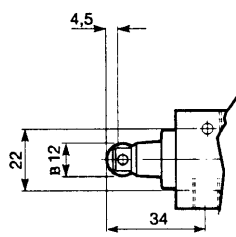
 **NORGREN**

Mechanical valve actuators

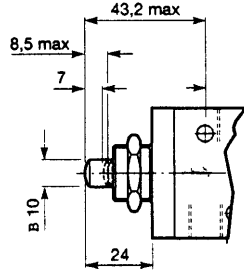
Plunger – G1/8 valves **1**



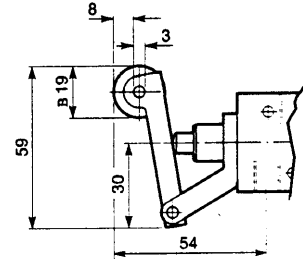
Roller – G1/8 valves **2**



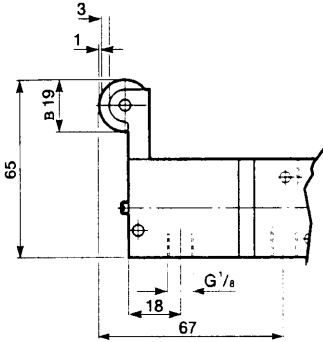
Plunger – G1/4 valves **3**



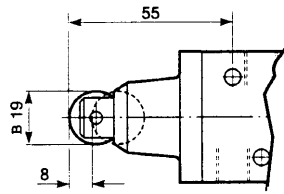
Roller lever – G1/8 valves **4**



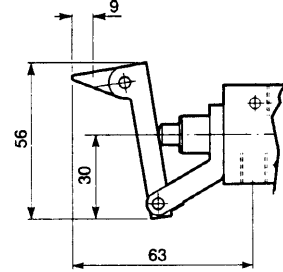
Sensitive roller lever – G1/8 valves **5**



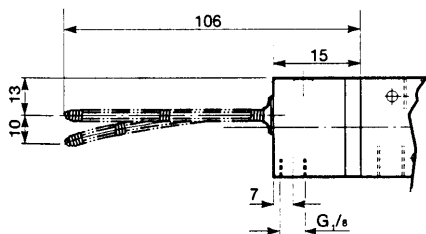
Roller – G1/4 valves **6**



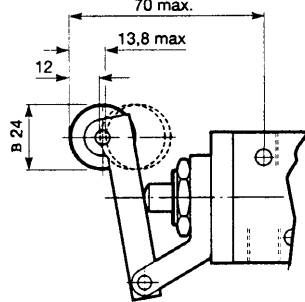
One way trip – G1/8 valves **7**



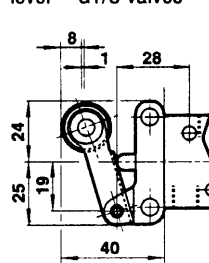
Antenna – G1/8 valves **8**



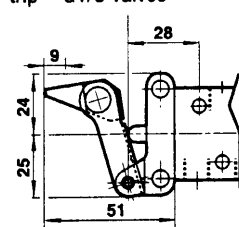
Roller lever – G1/4 valves **9**



Heavy duty roller lever – G1/8 valves **10**

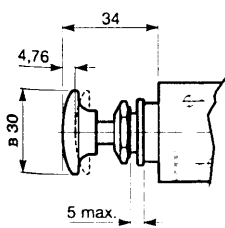


Heavy duty one-way trip – G1/8 valves **11**

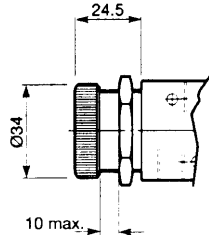


Manual valve actuators

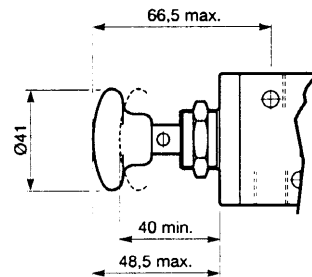
Button – G1/8 valves **12**



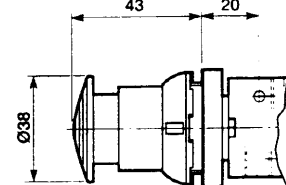
Button (shrouded) – G1/8 valves **13**



Button – G1/4 valves **14**



Button (palm) – G1/8 valves **15**



Super X² 供应商

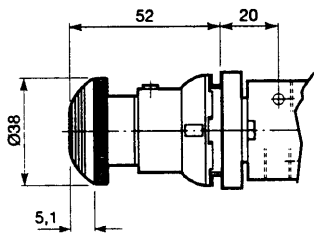
Manually & mechanically actuated

In-line

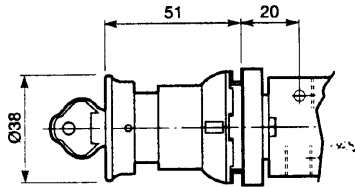
3/2, 5/2 & 5/3, G¹/₈, G¹/₄

Manual valve actuators

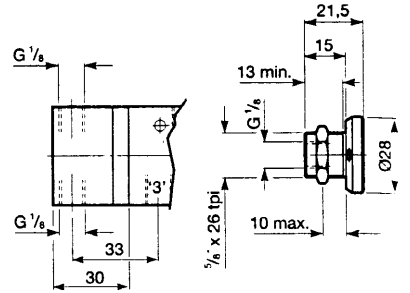
Emergency stop – G¹/₈ valves **(16)**



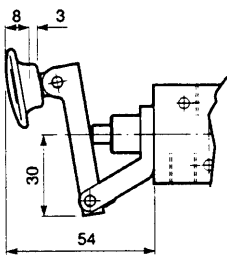
Button/key – G¹/₈ valves **(17)**



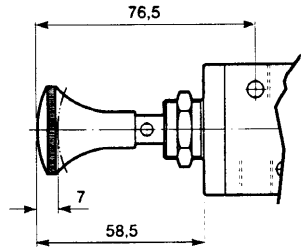
Sensitive push button – G¹/₈ valves **(18)**



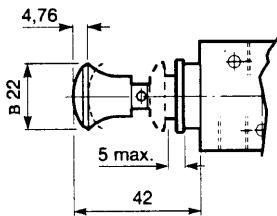
Lever/knob – G¹/₈ valves **(19)**



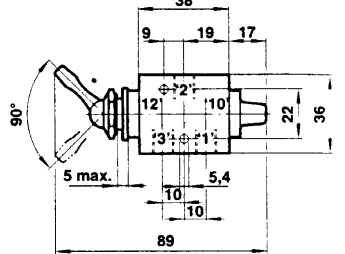
Knob – G¹/₄ valves **(20)**



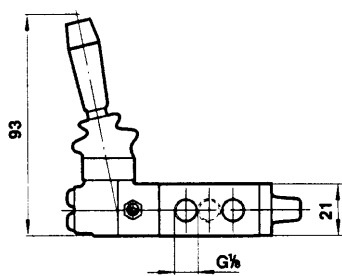
Knob – G¹/₈ valves **(21)**



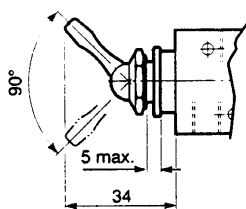
Lever operated spring return valve – G¹/₈ valves **(22)**



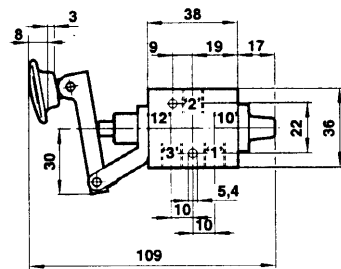
Lever operated spring return valve – G¹/₈ valves **(23)**



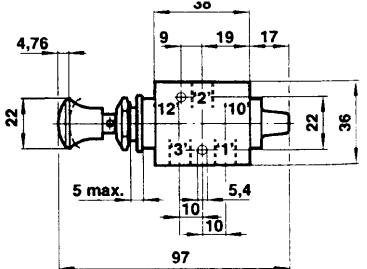
Switch – G¹/₈ valves **(24)**



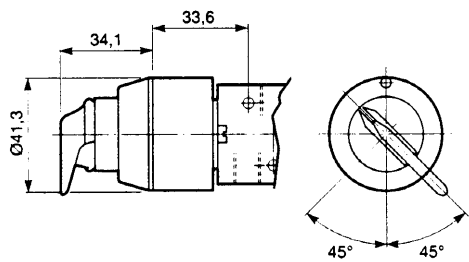
Lever operated spring return valve – G¹/₈ valves **(25)**



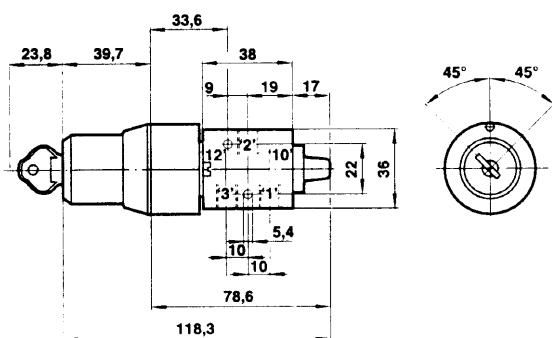
Knob operated knob return valve – G¹/₈ valves **(26)**



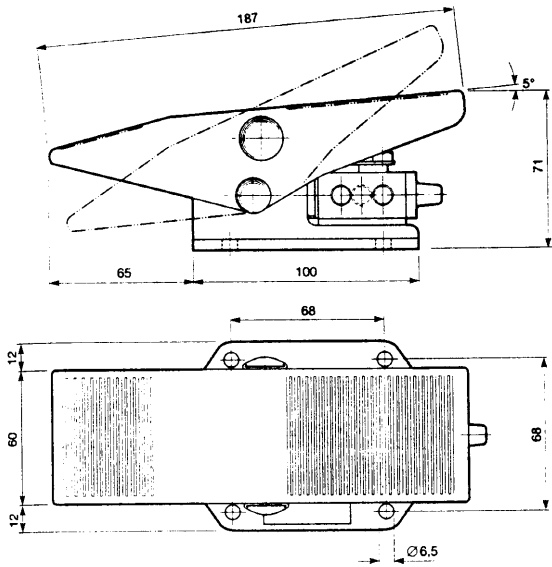
Rotary knob – G¹/₈ valves **(27)**



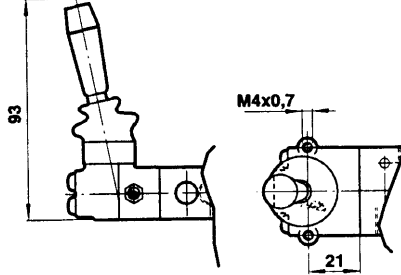
Key – G¹/₈ valves **(28)**



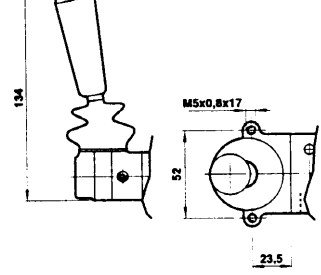
Pedal/treadle – G1/8-G1/4 valves (29)



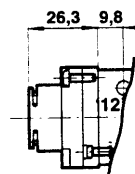
Lever – G1/8 valves (30)



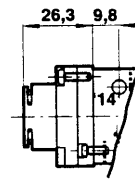
Lever – G1/4 valves (31)



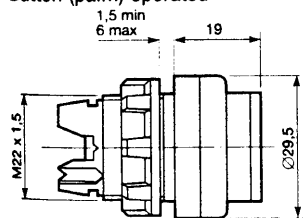
03 0295 02
G1/8, 3/2 Adaptor valve,
spring return (32)



X3 0395 02
G1/8, 5/2 Adaptor valve,
spring return (33)

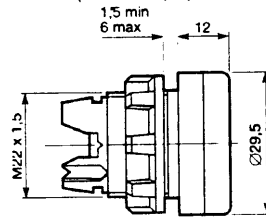


M/P 34840/*
Button (palm) operated (34)



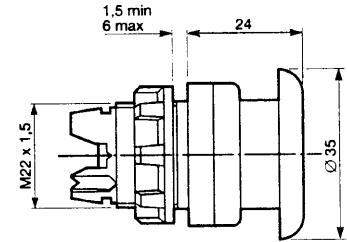
Operating force: 50N IP 65 protection
Panel mounted \varnothing 22.5 mm hole

M/P 34841/*
Button (shrouded) operated (35)



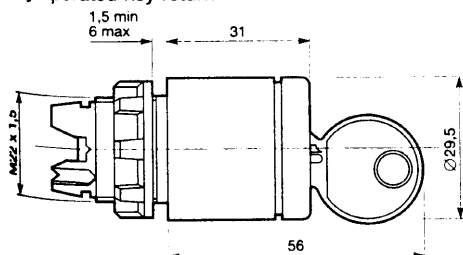
Operating force: 50N Panel hole: \varnothing 22.5 mm
Panel thickness: 6 mm maximum

M/P 34842/*
Button (mushroom) operated (36)



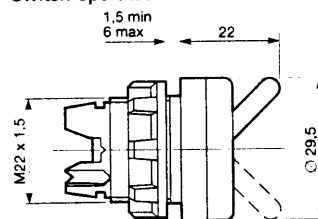
Operating force: 50N Panel hole: \varnothing 22.5 mm
Panel thickness: 6 mm maximum

M/P 34845
Key operated key return (37)



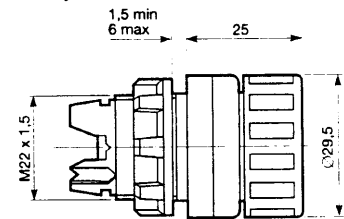
Operating force: 6.8N Panel hole: \varnothing 22.5 mm
Panel thickness: 6 mm maximum

M/P 34846
Switch operated (38)



Operating force: 40N Panel hole: \varnothing 22.5 mm
Panel thickness: 6 mm maximum

M/P 34843
Rotary knob (39)



Operating force: 6.8N Panel hole: \varnothing 22.5 mm
Panel thickness: 6 mm maximum