

SONY CXK5816PN/M

10/10L/12/
12L/15/15L

2048 word x 8 bit High Speed CMOS Static RAM

Description

CXK5816PN/M is a 16,384 bits high speed CMOS static RAM organized as 2,048 words by 8 bits and operates from a single 5V supply. This device is suitable for use in high speed and low power applications in which battery back up for nonvolatility is required.

Features

- High speed operation (Access time)
CXK5816PN/M -10, 10L 100ns (Max.)
CXK5816PN/M -12, 12L 120ns (Max.)
CXK5816PN/M -15, 15L 150ns (Max.)
- Low power consumption (Standby) (Operation)
CXK5816PN/M -10, 12, 15 100 μ W(Typ.) 125mW(Typ.)
CXK5816PN/M -10L, 12L, 15L 5 μ W(Typ.) 125mW(Typ.)
- Single +5V supply: 5V \pm 10%.
- Fully static memory No clock or timing strobe required
- Equal access and cycle time
- Common data input and output: three-state output
- Directly TTL compatible: All inputs and outputs
- Low voltage data retention: 2.0V (Min.)

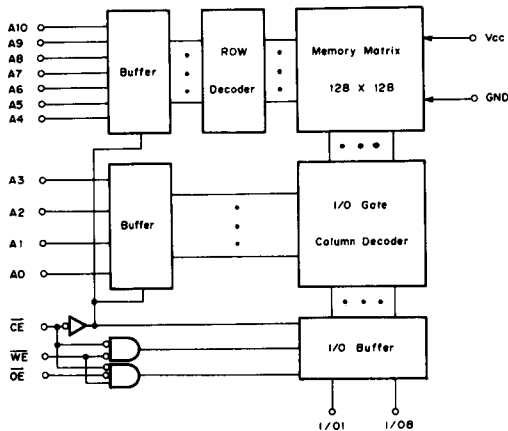
Function

2048-word \times 8 bit static RAM

Structure

Silicon gate CMOS IC

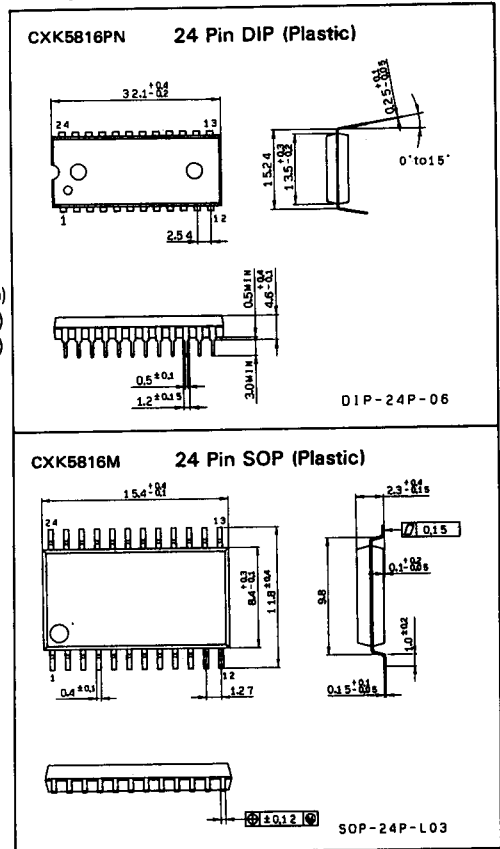
Block Diagram



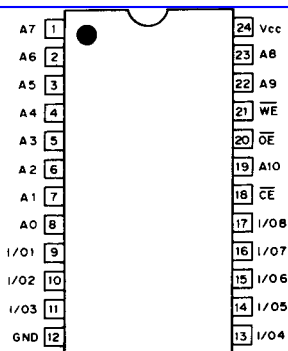
Note) All Typical values are measured under the conditions
V_{cc}=5.0V and T_a=25°C.

Package Outline

Unit: mm



Pin Configuration (Top View)
[查询"CXK5816PN"供应商](#)



Pin Description

Symbol	Description
A0 to A10	Address input
I/O1 to I/O8	Data input output
CE	Chip enable input
WE	Write enable input
OE	Output enable input
Vcc	+5V power supply
GND	Ground

Absolute Maximum Ratings

Ta = 25°C, GND = 0V

Item	Symbol	Rating	Unit
Supply voltage	V _{CC}	-0.5* to +7.0	V
Input voltage	V _{IN}	-0.5* to V _{CC} +0.5	V
Input and output voltage	V _{I/O}	-0.5* to V _{CC} +0.5	V
Allowable power dissipation	P _D	CXK5816PN/SP	1.0
		CXK5816M	0.7
Operating temperature	T _{opr}	0 to +70	°C
Storage temperature	T _{stg}	-55 to +150	°C
Soldering temperature	T _{solder}	260*10	°C • sec

* V_{CC}, V_{IN}, V_{I/O} Minimum value = -3.0V, Pulse width is under 50 ns.

Truth Table

CE	OE	WE	Mode	I/O1 to I/O8	V _{CC} Current
H	X	X	Not selected	High Z	I _{SB1} , I _{SB2}
L	H	H	Output disable	High Z	I _{CC1} , I _{CC2}
L	L	H	Read	D out	I _{CC1} , I _{CC2}
L	X	L	Write	D in	I _{CC1} , I _{CC2}

Note) X: "H" or "L"

DC Recommended Operating Conditions

Ta = 0 to +70°C, GND = 0V

Item	Symbol	Min.	Typ.	Max.	Unit
Supply voltage	V _{CC}	4.5	5.0	5.5	V
Input high voltage	V _{IH}	2.2	—	V _{CC} +0.3	V
Input low voltage	V _{IL}	-0.3	—	0.8	V

DC and Operating Characteristics

[查询"CXK5816PN"供应商](#)

 $V_{CC}=5V \pm 10\%$, $GND=0V$, $T_a=0$ to $+70^\circ C$

Item	Symbol	Test condition	CXK5816PN/M/SP -10/12/15			CXK5816PN/M/SP -10L/12L/15L			Unit
			Min.	Typ.**	Max.	Min.	Typ.**	Max.	
Input leakage current	I_{LI}	$V_{IN}=GND$ to V_{CC}	-2	—	2	-2	—	2	μA
Output leakage current	I_{LO}	$\overline{CE}=V_{IH}$ or $\overline{OE}=V_{IH}$ $V_{I/O}=GND$ to V_{CC}	-2	—	2	-2	—	2	μA
Operating power supply current	I_{CC1}	$\overline{CE}=V_{IL}$, $I_{OUT}=0mA$	—	25	60	—	25	60	mA
Average operating current	I_{CC2}	Cycle = Min, Duty = 100% $I_{OUT}=0mA$	—	28 *(31)	60 *(75)	—	28 *(31)	60 *(75)	mA
Standby current	I_{SB1}	$\overline{CE} \geq V_{CC} - 0.2V$	—	0.02	1.0	—	0.001	0.05	mA
	I_{SB2}	$\overline{CE}=V_{IH}$	—	0.3	2	—	0.2	1	mA
Output high voltage	V_{OH}	$I_{OH}=-1.0mA$	2.4	—	—	2.4	—	—	V
Output low voltage	V_{OL}	$I_{OL}=4.0mA$	—	—	0.4	—	—	0.4	V

* **Note)** Shows CXK5816PN/M/SP-10, 10L value.

** $V_{CC}=5V$, $T_a=25^\circ C$

Capacitance

 $T_a=25^\circ C$, $f=1$ MHz

Item	Test condition	Symbol	Min.	Max.	Unit
Input capacitance	$V_{IN}=0V$	C_{IN}	—	7	pF
Input/output capacitance	$V_{I/O}=0V$	$C_{I/O}$	—	10	pF

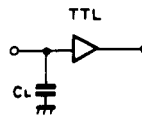
Note) This parameter is sampled and is not 100% tested.

AC Operating Characteristics

• AC test condition

 $V_{CC} = 5V \pm 10\%$, $T_a = 0$ to $+70^\circ C$

Item	Condition
Input pulse high level	$V_{IH} = 2.4V$
Input pulse low level	$V_{IL} = 0.6V$
Input rise time	$t_R = 5ns$
Input fall time	$t_F = 5ns$
Input and output timing reference level	1.5V
Output load	$C_L^* = 100pF, 1TTL$



* C_L includes scope and jig capacitance.

• Read cycle

[查询"CXK5816PN"供应商](#)

Item	Symbol	CXK5816PN/M -10/10L		CXK5816PN/M -12/12L		CXK5816PN/M -15/15L		Unit
		Min.	Max.	Min.	Max.	Min.	Max.	
		Read cycle time	t_{RC}	100	—	120	—	
Address access time	t_{AA}	—	100	—	120	—	150	ns
Chip enable access time	t_{CO}	—	100	—	120	—	150	ns
Output enable to output valid	t_{OE}	—	50	—	55	—	60	ns
Output hold from address change	t_{OH}	15	—	15	—	15	—	ns
Chip enable to output in low Z (CE)	t_{LZ}	15	—	15	—	15	—	ns
Output enable to output in low Z (OE)	t_{OLZ}	10	—	10	—	10	—	ns
Chip disable to output in high Z (CE)	$*t_{HZ}$	0	30	0	40	0	50	ns
Output disable to output in high Z (OE)	$*t_{OHZ}$	0	30	0	40	0	50	ns

* **Note** t_{HZ} and t_{OHZ} are specified by the time length until the output circuit is turned off and not specified by the output voltage level.

• Write cycle

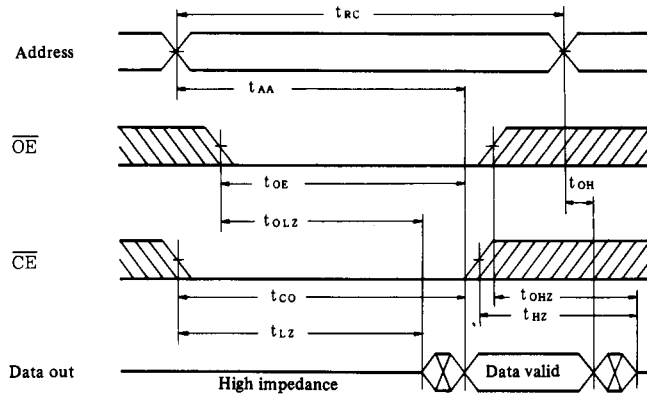
Item	Symbol	CXK5816PN/M -10/10L		CXK5816PN/M -12/12L		CXK5816PN/M -15/15L		Unit
		Min.	Max.	Min.	Max.	Min.	Max.	
		Write cycle time	t_{WC}	100	—	120	—	
Address valid to end of write	t_{AW}	80	—	100	—	120	—	ns
Chip enable to end of write	t_{CW}	80	—	100	—	120	—	ns
Data to write time overlap	t_{DW}	30	—	35	—	40	—	ns
Data hold from write time	t_{DH}	0	—	0	—	0	—	ns
Write pulse width	t_{WP}	60	—	75	—	90	—	ns
Address setup time	t_{AS}	0	—	0	—	0	—	ns
Write recovery time	t_{WR}	5	—	5	—	5	—	ns
Output active from end of write	t_{OW}	15	—	15	—	15	—	ns
Write to output in high Z	t_{WHZ}^*	0	30	0	40	0	50	ns

* **Note** t_{WHZ} is specified by the time length until the output circuit is turned off and not specified by the output voltage level.

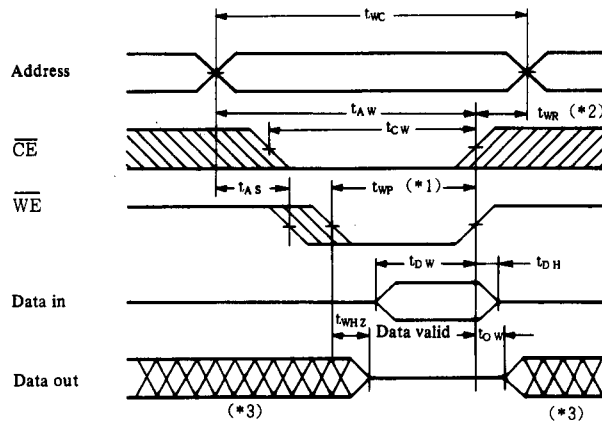
Timing Waveform

[查询"CXK5816PN"供应商](#)

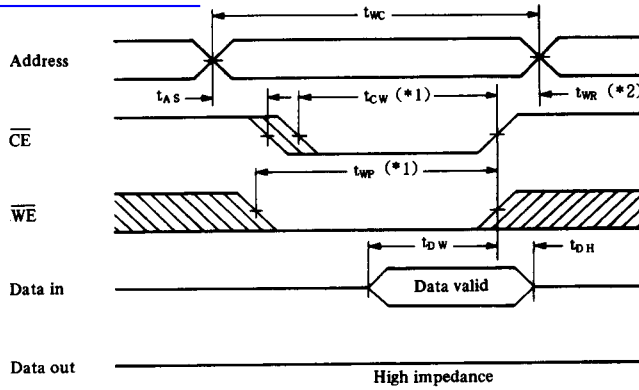
(1) Read Cycle [WE=V_{IH}]



(2) Write Cycle (1): WE Control [OE=V_{IH}]



Write Cycle (2): \overline{CE} Control [$\overline{OE}=V_{IL}$]
[查询“CXK5816PN”供应商](#)



Note)

- *1 A write occurs during the low overlap of \overline{CE} and \overline{WE} .
- *2 t_{WR} is measured from the earlier of \overline{CE} or \overline{WE} going high to the end of write cycle.
- *3 During this period, I/O pins are in the output state so that the input signals of opposite phase to the outputs must not be applied.

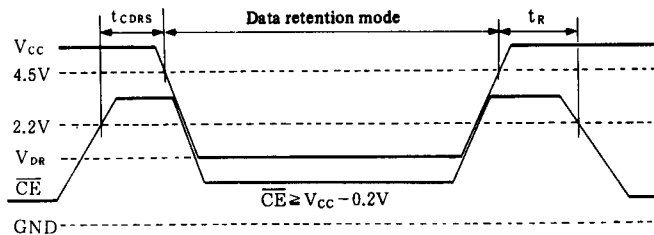
Data Retention Characteristics

Ta = 0 to +70°C

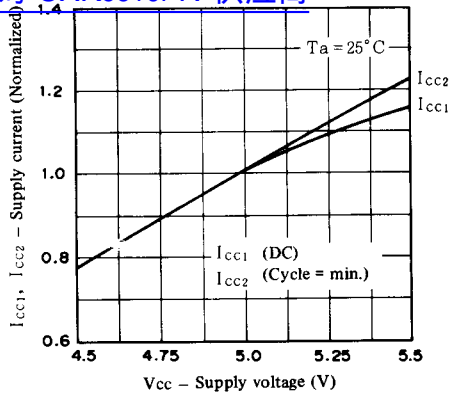
Item	Symbol	Test condition	CXK5816PN/M -10/12/15			CXK5816PN/M -10L/12L/15L			Unit
			Min.	Typ.	Max.	Min.	Typ.	Max.	
Data retention voltage	V_{DR}	$\overline{CE} \geq V_{CC} - 0.2V$	2.0	5.0	5.5	2.0	5.0	5.5	V
Data retention current	I_{CCDR1}	$V_{CC} = 3.0V, \overline{CE} \geq 2.8V$	—	12	600	—	0.6	30	μA
	I_{CCDR2}	$V_{CC} = 2.0$ to $5.5V, \overline{CE} \geq V_{CC} - 0.2V$	—	20	1000	—	1.0	50	μA
Data retention set up time	t_{CDRS}	Chip disable to data retention mode	0	—	—	0	—	—	ns
Recovery time	t_R		t_{RC}^*	—	—	t_{RC}^*	—	—	ns

* t_{RC} : Read cycle time

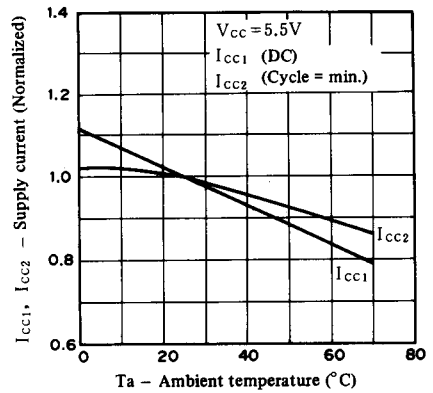
Data Retention Waveform



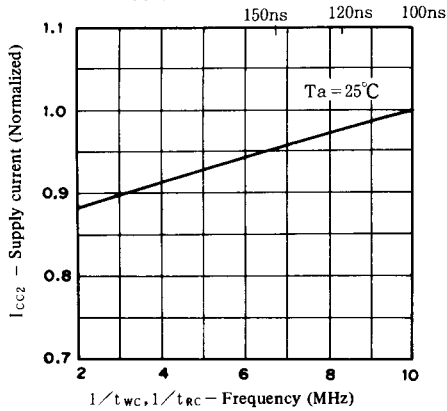
Supply current vs. Supply voltage
 查询"CXK5816PN"供应商



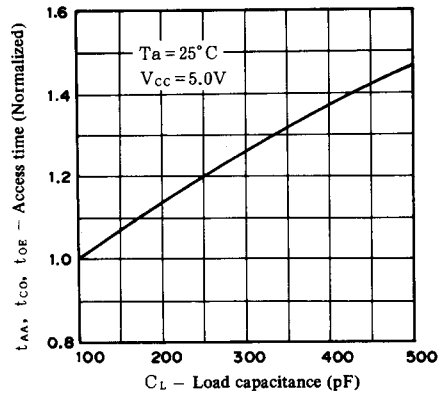
Supply current vs. Ambient temperature



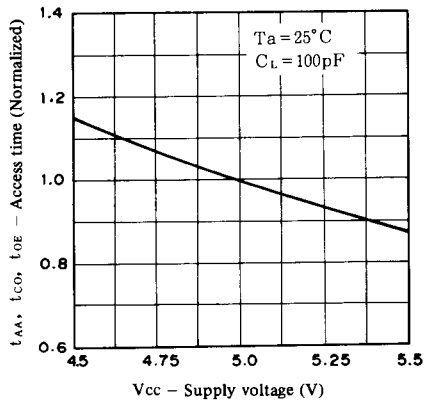
Supply current vs. Frequency



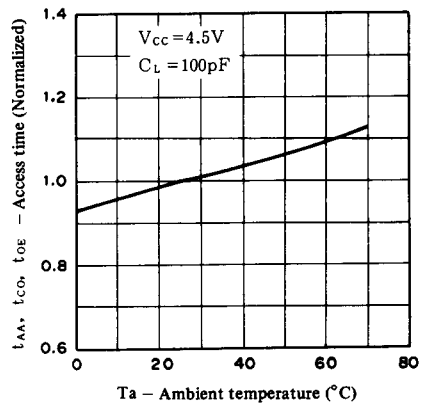
Access time vs. Load capacitance



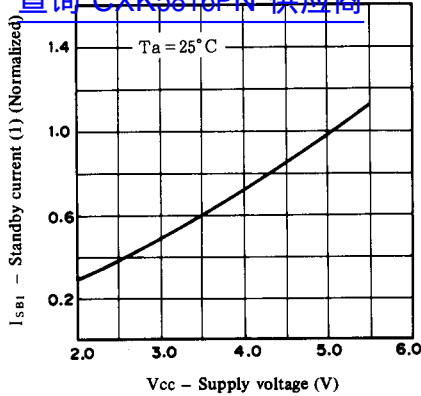
Access time vs. Supply voltage



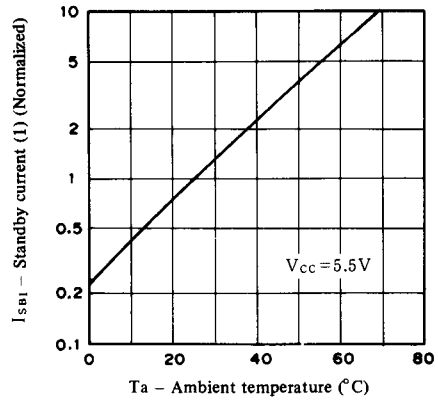
Access time vs. Ambient temperature



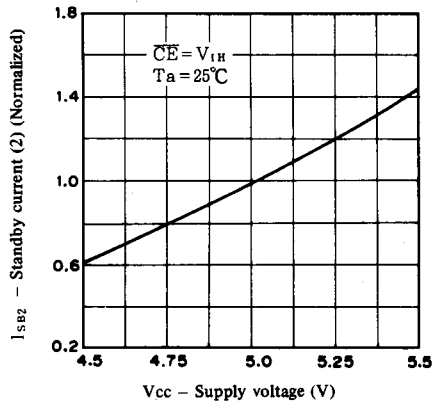
Standby current (1) vs. Supply voltage
 查询"CXK5816PN"供应商



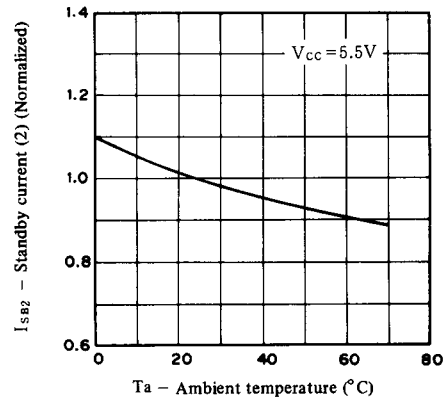
Standby current (1) vs. Ambient temperature



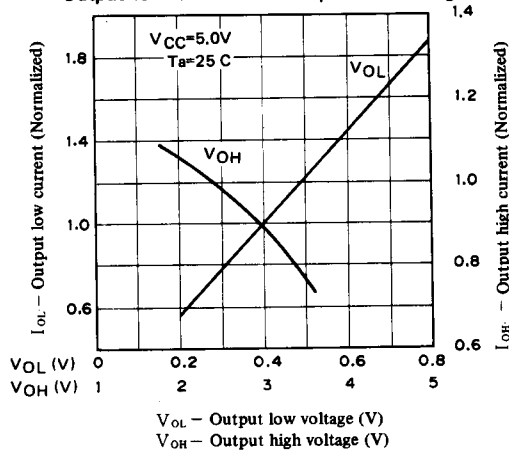
Standby current (2) vs. Supply voltage



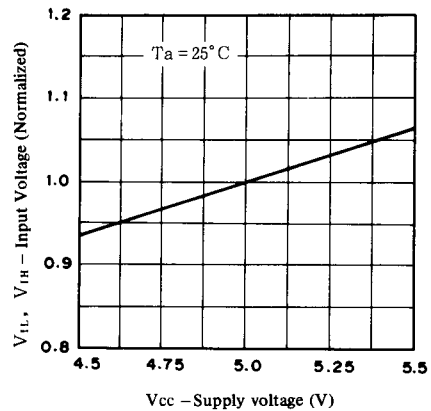
Standby current (2) vs. Ambient temperature



Output high current vs. Output high voltage
 Output low current vs. Output low voltage



Input voltage vs. Supply voltage



Inserted	Standard	Z I P	ZIG ZAG IN LINE PACKAGE		P	2.54mm (100MIL) Zig Zag inline	Through Hole Lead	1-direction
		PIN ARRAY	PIN ARRAY		C	2.54mm (100MIL)	Through Hole Lead	4-direction
		PIGGY BACK	PIGGY BACK		C	2.54mm (100MIL)	Through Hole Lead	2-direction
	Shrink	SDIP	SHRINK DUAL IN LINE PACKAGE		P	1.778mm (70MIL)	Through Hole Lead	2-direction
Surface mounted	Standard flat package	Q F P	QUAD FLAT PACKAGE		P	1.0mm 0.8mm	Gull-Wing	4-direction
		S O P	SMALL OUTLINE PACKAGE		P	1.27mm (50MIL)	Gull-Wing	2-direction
	Shrink flat package	VQFP	VERY SMALL QUAD FLAT PACKAGE		P	0.5mm	Gull-Wing	4-direction
		VSOP	VERY SMALL OUTLINE PACKAGE		P	0.65mm	Gull Wing	2-direction
	Standard chip carrier	PLCC	PLASTIC LEADED CHIP CARRIER		P	1.27mm (50MIL)	J-bend	4-direction
		L C C	LEAD LESS CHIP CARRIER		C	1.27mm (50MIL)	Lead less	Package side
	Shrink chip carrier	SPLCC (PLCC)	SHRINK PLASTIC LEADED CHIP CARRIER		P	1.27mm Max. (50MIL Max.)	J-bend	4-direction
	Standard 2-direction chip carrier	SOJ	SMALL OUTLINE J-LEAD PACKAGE		P	1.27mm (50MIL)	J-bend	2-direction

查询"CXK5816PN"供应商

*P.....Plastic, C.....Ceramic