

# SIL20C2 Series

查询"SIL06C2-00SADJ-HJ"供应商

4.5 V<sub>in</sub> to 13.8 V Single Output

ARTESYN<sup>®</sup>  
TECHNOLOGIES

PRELIMINARY DATA SHEET

February 19, 2005

DC-DC CONVERTERS

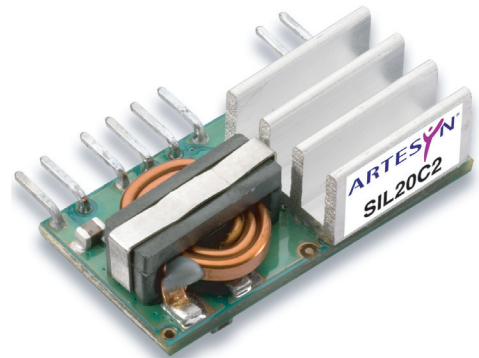
C Class Non-isolated

Preliminary Data - subject to change without notice

1

NEW Product

- 20 A current rating
- Input voltage range: 4.5-13.8 V
- Output voltage: 0.59-5.1 V
- Industry leading value
  - Cost optimized design
- Excellent transient response
- Output enable
- Output voltage adjustability
  - Pathway for future upgrades
  - Supports silicon voltage migration
  - Resulting in reduced design-in and qual time
- Current sink capability
- RoHS compliant



UL<sup>®</sup> US  
TÜV  
2 YEAR WARRANTY

The SIL20C2 series is a new high density, open frame, non-isolated converter for space sensitive applications. This model has a wide input range (4.5-13.8 Vdc) and offers a wide 0.59-5.1 V output voltage range with 20 A load capability. An external resistor adjusts the output voltage from its pre-set value of 0.59 V to any value up to the 5 V maximum. Typical efficiencies for the models are 93% for the 12 V input version. The SIL20C2 series offers remote ON/OFF and over-current protection as standard.

All specifications are typical at nominal input, full load at 25 °C, unless otherwise stated

## SPECIFICATIONS

### OUTPUT SPECIFICATIONS

Output voltage	(See Note 5)	0.59-5.1 V
Output setpoint accuracy	0.1% trim resistors	±1.0%
Line regulation	Low line to high line	±0.2%
Load regulation	Full load to min. load	±0.5%
Min/max load		0 A/20 A
Overshoot	At turn-on	0.5% max.
Undershoot	At turn-off	100 mV max.
Ripple and noise	(See Note 1)	30 mV 5 Hz to 20 MHz V <sub>in</sub> = 5 V, V <sub>out</sub> = 2.5 V
Transient response	(See Notes 1, 2)	130 mV max. deviation 50 µs recovery within regulation band

### INPUT SPECIFICATIONS

Input voltage range		4.5-13.8 Vdc
Input current	Minimum load Remote OFF	50 mA 5 mA
Input current (max.)	(See Note 3)	18 A @ I <sub>o</sub> max.
Start-up time	Remote ON/OFF	3 ms

### GENERAL SPECIFICATIONS

Efficiency	V <sub>in</sub> =5 V, V <sub>o</sub> =2.5 V, I <sub>o</sub> =20 A	90%
Switching frequency	Fixed	750 kHz
Approvals and standards (pending)		EN60950 UL/cUL6950
Material flammability		UL94V-0
Weight		8.50 g/0.3 oz.
MTBF	12 V @ 40 °C 100% load Bellcore 332	6,721,853 hours
Coplanarity		150 µm

### ENVIRONMENTAL SPECIFICATIONS

Thermal performance (See Note 5)	Operating ambient, temperature Non-operating	0 °C to +70 °C -40 °C to +125 °C
----------------------------------	---	-------------------------------------

### PROTECTION

Short-circuit	Hiccup, non-latching
Overvoltage protection	Hiccup, non-latching

### RECOMMENDED SYSTEM CAPACITANCE

Input capacitance	(See Note 6)	0 µF
Output capacitance	(See Note 7)	0 µF

International Safety Standard Approvals



UL/cUL CAN/CSA 22.2 No. E139421  
UL60950 File No. TBD



TÜV Product Service (EN60950) Certificate No. TBD  
CB report and certificate to IEC60950

# SIL20C2 Series

查询"SIL06C2-00SADJ-HJ"供应商

4.5 V<sub>in</sub> to 13.8 V Single Output

ARTESYN<sup>®</sup>  
TECHNOLOGIES

PRELIMINARY DATA SHEET

February 19, 2005

DC-DC CONVERTERS

C Class Non-isolated

Preliminary Data - subject to change without notice

2

For the most current data and application support visit [www.artesyn.com/powergroup/products.htm](http://www.artesyn.com/powergroup/products.htm)

NEW Product

OUTPUT POWER (MAX.)	INPUT VOLTAGE	OVP	OUTPUT VOLTAGE	OUTPUT CURRENT (MIN.)	OUTPUT CURRENT (MAX.)	EFFICIENCY (TYP.)	REGULATION		MODEL NUMBER <sup>(8, 9)</sup>
							LINE	LOAD	
100 W	4.5-13.8 Vdc	N/A	0.59-5.1 V	0 A	20 A	93%	±0.2%	±0.5%	SIL20C2-00SADJ-VJ

Part Number System with Options

SIL20C2-00SADJ-VJ

#### Product Family

SIL = Single In Line  
SMT = Surface Mount

#### Rated Output Current

06 = 6 A  
15 = 15 A  
20 = 20 A  
30 = 30 A  
40 = 40 A

#### Performance

C = Cost Optimized

#### Generation

Blank = Standard Part  
2 = Increased Current Density

#### RoHS Compliance<sup>(8)</sup>

J = Pb-free (RoHS 6/6 compliant)

#### Mounting Option

V = Vertical  
H = Horizontal

#### Output Voltage

Single Adjustable Output

#### Input Voltage

00 = 4.5-13.8 V

#### Output Voltage Adjustment of the SIL20C2 Series

The ultra-wide output voltage trim range offers major advantages to users who select the SIL20C2. It is no longer necessary to purchase a variety of modules in order to cover different output voltages. The output voltage can be trimmed in a range of 0.59-5.1 V. When the SIL20C2 converter leaves the factory, the output has been adjusted to the default voltage of 0.59 V.

#### Notes

- 1 Measured as per recommended system capacitance.
- 2  $di/dt = 10 \text{ A}/\mu\text{s}$ ,  $V_{in} = \text{Nom}$ ,  $T_c = 25^\circ\text{C}$ , load change = 0.75 I<sub>o</sub> to full I<sub>o</sub> and full I<sub>o</sub> to 0.75.
- 3 External input fusing is recommended.
- 4 Additional part numbers may be available with different output voltages.
- 5 Airflow dependent, 100 LFM minimum required.
- 6 No capacitor needed for ripple current capability.
- 7 No capacitor needed for stability.
- 8 TSE RoHS 5/6 (non Pb-free) compliant versions may be available on special request, please contact your local sales representative for details.
- 9 NOTICE: Some models may not support all options. Please contact your local Artesyn representative or use the on-line model number search tool at <http://www.artesyn.com/powergroup/products.htm> to find a suitable alternative.

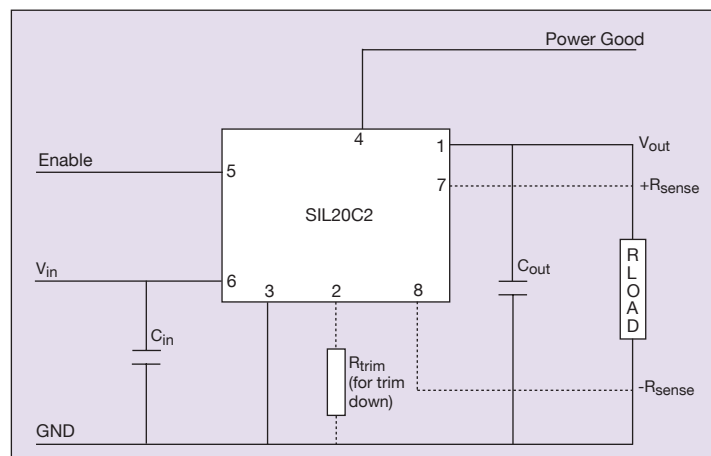


Figure 1: Standard Application Drawing

# SIL20C2 Series

查询"SIL06C2-00SADJ-HJ"供应商

4.5 Vin to 13.8 V Single Output

**ARTESYN**  
TECHNOLOGIES

**PRELIMINARY DATA SHEET**

February 19, 2005

DC-DC CONVERTERS

C Class Non-isolated

**Preliminary Data - subject to change without notice**

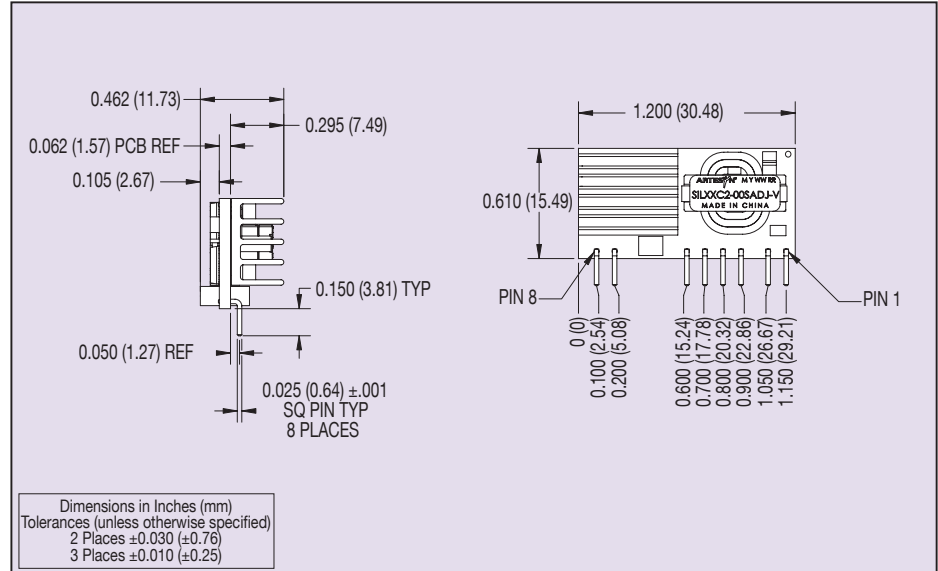
3

For the most current data and application support visit [www.artesyn.com/powergroup/products.htm](http://www.artesyn.com/powergroup/products.htm)

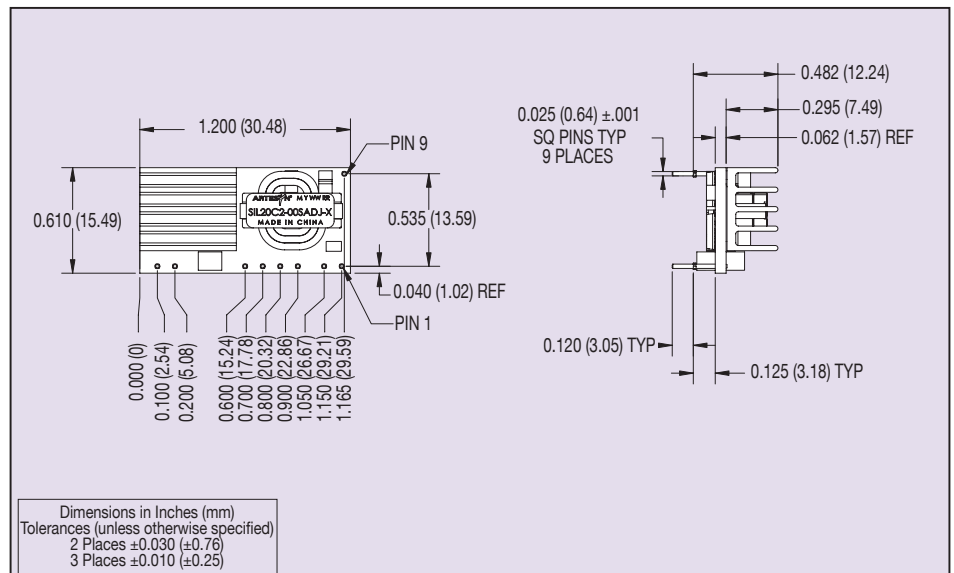
**NEW Product**

PIN CONNECTIONS	
PIN NO.	FUNCTION
1	Vout
2	Trim
3	Ground
4	Power good
5	Enable
6	Vin
7	Remote Sense (+)
8	Remote Sense (-)
9	*Mech Support
10	*Mech Support

\* Horizontal and SMT version only



**Figure 2: Vertical Mount Mechanical Drawing**



**Figure 3: Horizontal Mount Mechanical Drawing**

# SIL20C2 Series

查询"SIL06C2-00SADJ-HJ"供应商

4.5 Vin to 13.8 V Single Output

ARTESYN<sup>®</sup>  
TECHNOLOGIES

PRELIMINARY DATA SHEET

February 19, 2005

DC-DC CONVERTERS

C Class Non-isolated

Preliminary Data - subject to change without notice

4

For the most current data and application support visit [www.artesyn.com/powergroup/products.htm](http://www.artesyn.com/powergroup/products.htm)

NEW Product

PIN CONNECTIONS	
PIN NO.	FUNCTION
1	Vout
2	Trim
3	Ground
4	Power good
5	Enable
6	Vin
7	Remote Sense (+)
8	Remote Sense (-)
9	*Mech Support
10	*Mech Support

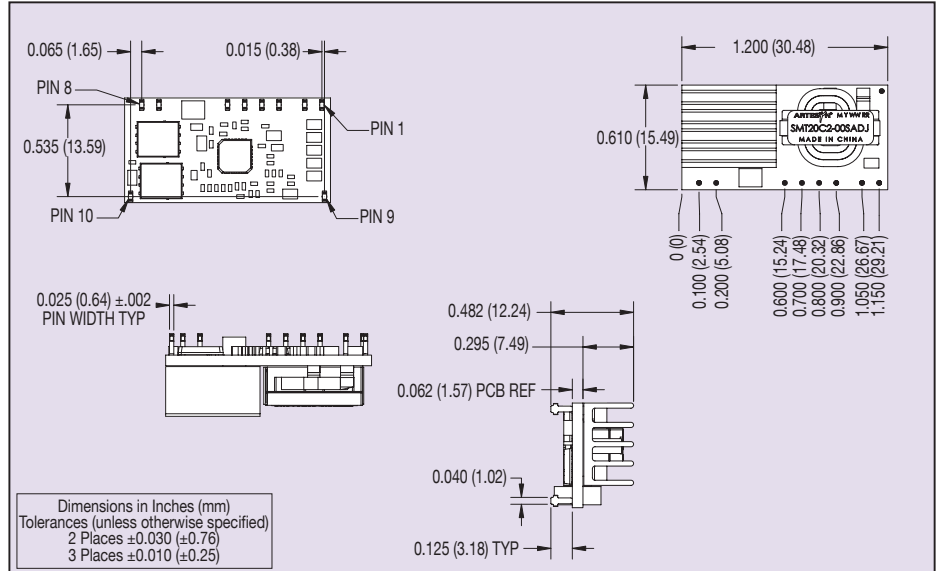


Figure 4: Surface Mount Mechanical Drawing

Datasheet © Artesyn Technologies® 2005

The information and specifications contained in this datasheet are believed to be correct at time of publication. However, Artesyn Technologies accepts no responsibility for consequences arising from printing errors or inaccuracies. Specifications are subject to change without notice. No rights under any patent accompany the sale of any such product(s) or information contained herein.

Please consult our website for the following items: ✓Application Note ✓Longform Datasheet

[www.artesyn.com](http://www.artesyn.com)