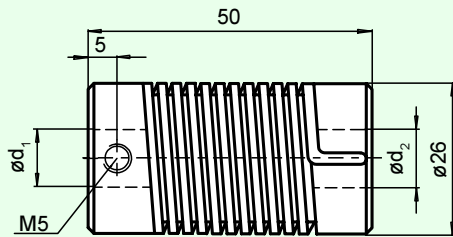


查询"45018"供应商

## Couplings

### 9401

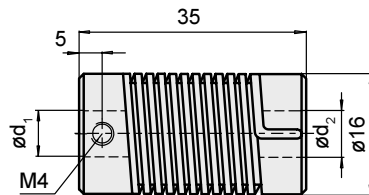


d <sub>1</sub>	6	8	8	10	12
d <sub>2</sub>	6	8	10	10	12

#### Technical Data

Max. rpm	3000 min <sup>-1</sup>
Nominal torque	1.5 Nm
Max. radial mismatch	1.5 mm
Max. angle error	5.0 °
Max. axial mismatch	± 1 mm
Moment of inertia	11.77 kgm <sup>2</sup> · 10 <sup>-4</sup>
Binding posts	M5 (DIN 916)
Max. starting torque	120 Ncm
Material	nickel-faced spring steel, zinc diecasting
Weight	≈ 120 g

### 9402

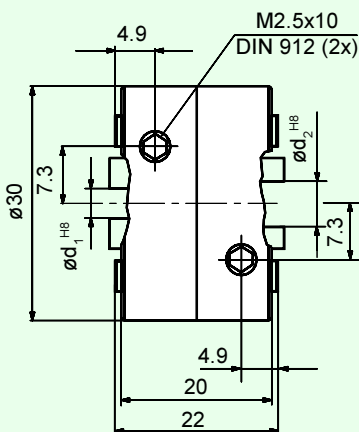


d <sub>1</sub>	6	7	8
d <sub>2</sub>	6	7	8

#### Technical Data

Max. rpm	3000 min <sup>-1</sup>
Nominal torque	0.5 Nm
Max. radial mismatch	1 mm
Max. angle error	5.0 Grad
Max. axial mismatch	± 1 mm
Moment of inertia	1.22 kgm <sup>2</sup> · 10 <sup>-4</sup>
Binding posts	M4
Material	nickel-faced spring steel, zinc diecasting
Weight	≈ 28 g

### Spring disc coupling 9403



d <sub>1</sub>	6	10
d <sub>2</sub>	6	10

#### Technical Data

Max. rpm	12000 min <sup>-1</sup>
Nominal torque	0.4 Nm
Max. radial mismatch	± 0.4 mm
Max. angle error	± 2.5 °
Max. axial mismatch	± 0.4 mm
Moment of inertia	25 kgm <sup>2</sup> · 10 <sup>-4</sup>
Binding posts	M4 (DIN 916)
Max. starting torque	80 Ncm
Material:	
Flange	zinc diecasting
Housing	polyamide 6.6
Weight	≈ 23 g

Date of issue 30.01.1998