

### DESCRIPTION

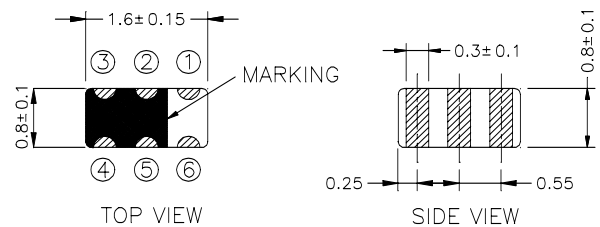
TOKO's LTF1608L Series is a multilayer ceramic lowpass filter designed for a variety of wireless applications. TOKO's proprietary material and filter design expertise provide for excellent performance and exceptional reliability in this economical and compact integrated ceramic structure.



### FEATURES

- Miniature footprint: 1.6 x 0.8mm
- Low profile: 0.9 mm max.
- Integrated ceramic structure
- Operating temperature: - 55°C to + 125°C
- Reflow solderable

### DIMENSIONS



|   |     |   |     |   |     |
|---|-----|---|-----|---|-----|
| 3 | GND | 2 | IN  | 1 | GND |
| 4 | GND | 5 | OUT | 6 | GND |

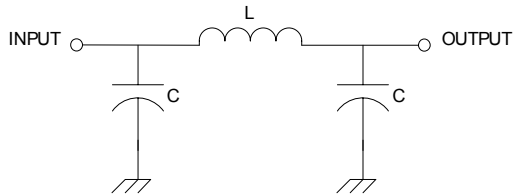
Units: mm

### ELECTRICAL SPECIFICATIONS

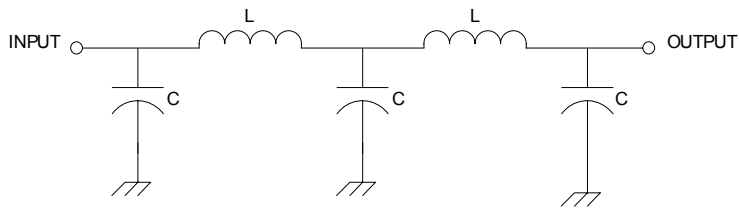
| TOKO Part Number | F <sub>o</sub> (MHz) | BW (MHz) | Insertion Loss (dB) max. | Ripple (dB) max. | Return Loss (dB) min. | Attenuation at 2x[F <sub>o</sub> ± BW] (dB) min. | Attenuation at 3x[F <sub>o</sub> ± BW] (dB) min. | Imp. (Ω) |
|------------------|----------------------|----------|--------------------------|------------------|-----------------------|--|--|----------|
| LTF1608L-FR80L   | 836.5                | ± 12.5   | 0.45                     | 0.50             | 14                    | 25   | 18   | 50       |
| LTF1608L-FR90L   | 897.5                | ± 17.5   | 0.45                     | 0.50             | 14                    | 25   | 18   | 50       |
| LTF1608L-FPR90H  | 897.5                | ± 17.5   | 0.50                     | 0.50             | 14                    | 35   | 25   | 50       |
| LTF1608L-F1R7L   | 1747.5               | ± 37.5   | 0.45                     | 0.50             | 14                    | 25   | 18   | 50       |
| LTF1608L-FP1R7H  | 1747.5               | ± 37.5   | 0.50                     | 0.50             | 14                    | 35   | 25   | 50       |
| LTF1608L-F1R8L   | 1880.0               | ± 30.0   | 0.45                     | 0.50             | 14                    | 25   | 18   | 50       |
| LTF1608L-FP1R8H  | 1880.0               | ± 30.0   | 0.50                     | 0.50             | 14                    | 35   | 25   | 50       |
| LTF1608L-F2R4L   | 2450.0               | ± 50.0   | 0.45                     | 0.50             | 14                    | 25   | 18   | 50       |
| LTF1608L-FP2R4H  | 2450.0               | ± 50.0   | 0.50                     | 0.50             | 14                    | 35   | 25   | 50       |

### EQUIVALENT CIRCUITS

#### LTF1608L-F Series

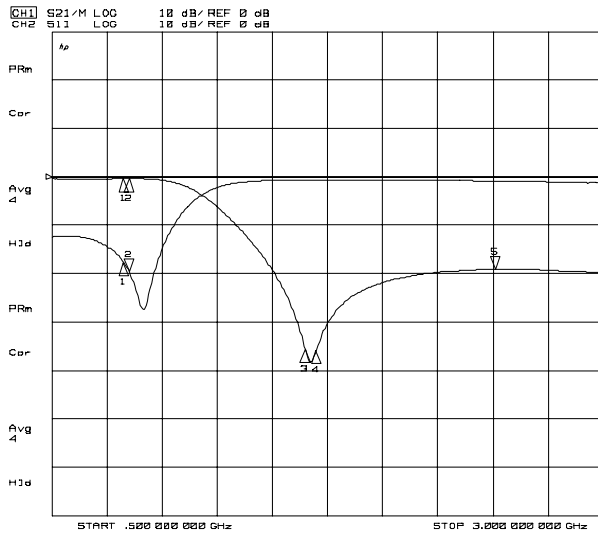


#### LTF1608L-FP Series



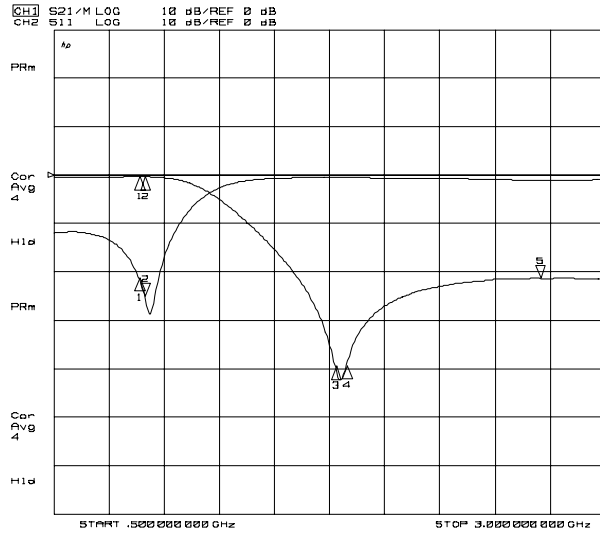
### TYPICAL CHARACTERISTICS

#### LTF1608L-FR80L

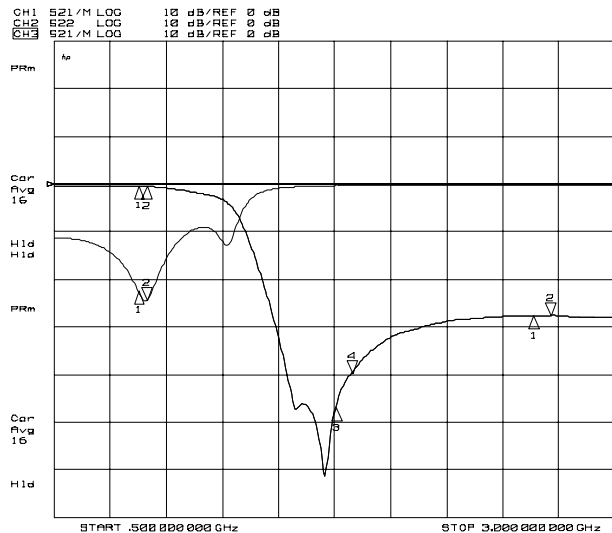


**TYPICAL CHARACTERISTICS**

**LTF1608L-FR90L**

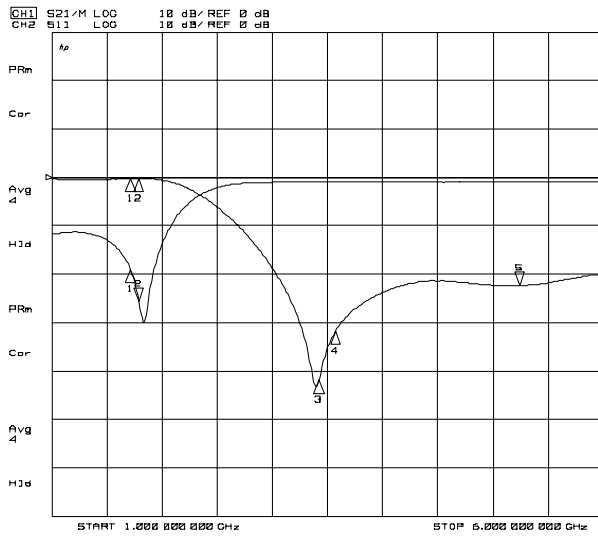


**LTF1608L-FPR90H**

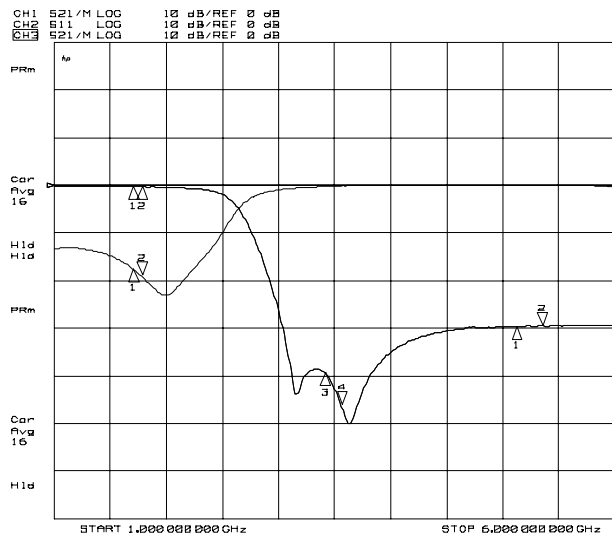


**TYPICAL CHARACTERISTICS**

**LTF1608L-F1R7L**

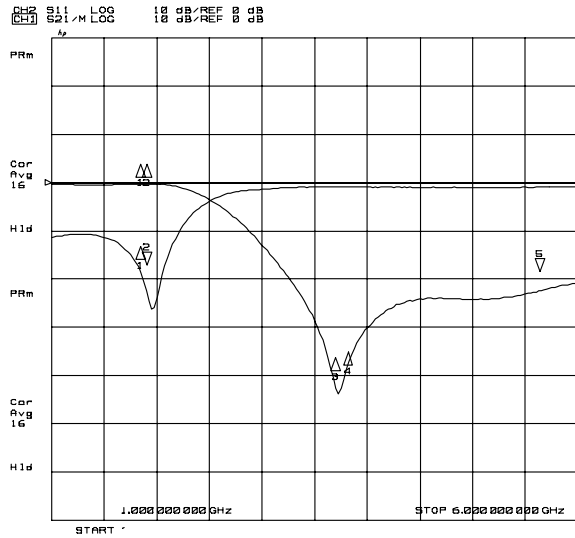


**LTF1608L-FP1R7H**

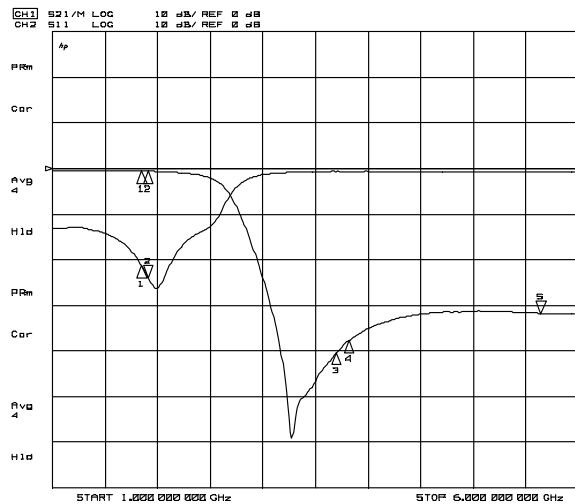


**TYPICAL CHARACTERISTICS**

**LTF1608L-F1R8L**

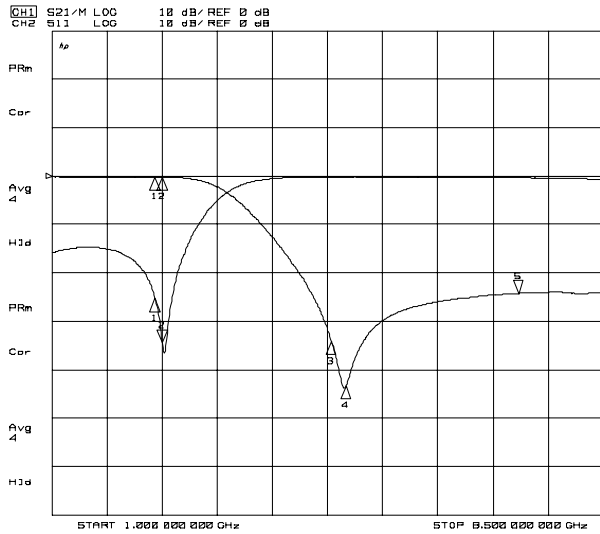


**LTF1608L-FP1R8H**

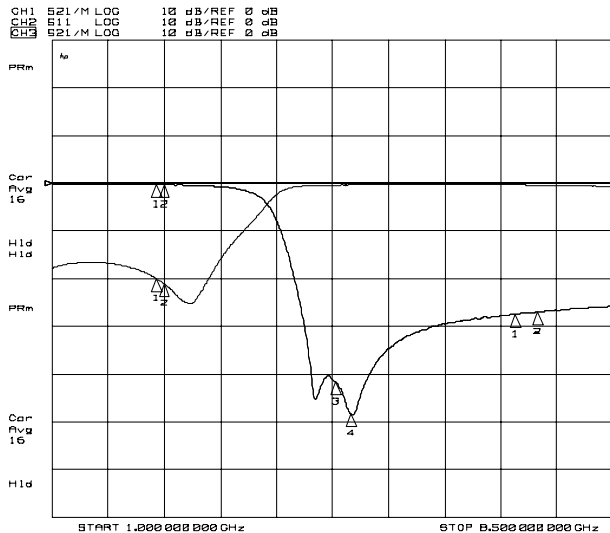


TYPICAL CHARACTERISTICS

LTF1608L-F2R4L



LTF1608L-FP2R4H



The information furnished by TOKO, Inc., is believed to be accurate and reliable. However, TOKO reserves the right to make changes or improvements in the design, specification, or manufacture of its products without further notice. TOKO does not assume any liability arising from the application or use of any product or circuit described herein, nor for infringements of patents or other rights of third parties which may result from the use of its products. No license is granted by implication or otherwise under any patent or patent rights of TOKO, Inc.