

# Isolated AC/DC Converter

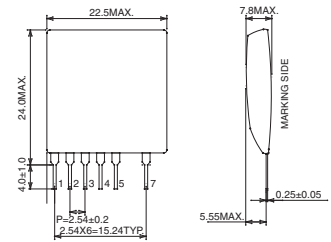
AC 100 to AC230V input, 6W output

BP5725

## Absolute Maximum Ratings

Parameter	Symbol	Limits	Unit	Conditions
7-pin input voltage	VD	800	V	
4-pin input voltage	VG	45	Vpeak	
7-pin input Current	ID	400	mA	
Maximum power	Po	6	W	
Allowable maximum surface temperature	Tcmax	105	°C	Ambient temperature + module self-heating ≤ Tcmax
Operating temperature range	Topr	-25 to +80	°C	
Storage temperature range	Tstg	-25 to +105	°C	

## Dimensions (mm)



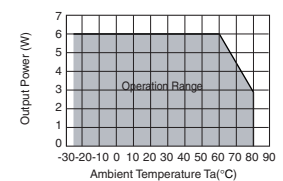
## Electrical Characteristics

<In case of 12V output> (Unless otherwise noted, Vi=311V, rated load Ta=25°C)

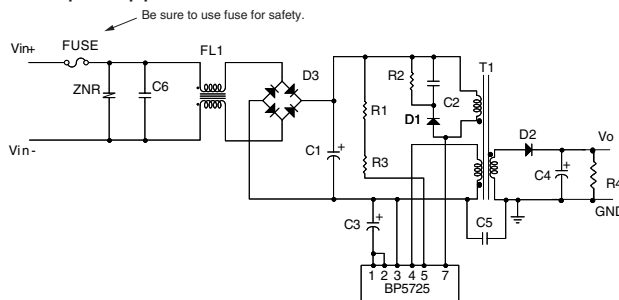
Parameter	Symbol	Min.	Typ.	Max.	Unit	Conditions
Output detection voltage	Vod	-7.1	-7.6	-8.1	V	Io=500mA
Output current	Io	10	-	500	mA	Refer to derating curve
Line regulation	Vr	-	380	500	mV	Vi=119V to 405VDC Io=500mA
Load regulation	VI	-	90	200	mV	Io=200mA to 500mA
Output ripple voltage	Vp	-	300	500	mVp-p	*1
Power conversion efficiency	η	70	77	-	%	

\*1: Pulse noise is not included.

## Derating Curve

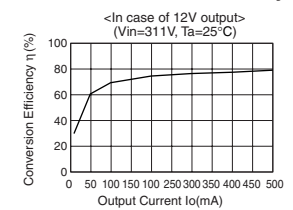


## Sample Application Circuit

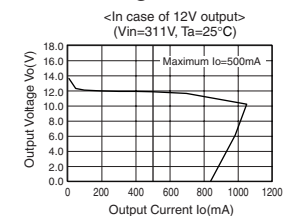


Pin No.	Name	Function
1	Vod	This is the output detection terminal.
2	Vod	This is the output detection terminal.
3	Vin(-)	This is the primary side input minus terminal.
4	VG	MOSFET, GATE driving input terminal.
5	Vs	This is the start terminal. Connect this via the external resistor (720kΩ) to Vi (+).
6	NC	This is the NC pin.
7	VD	This is the built-in FET of drain terminal. The primary coil minus side of the external transformer, and the snubber circuit for noise reduction are connected to this.

## Conversion Efficiency



## Load Regulation



## External Component Settings

C1: Capacitor for input voltage smoothing	10μF/450V
C2: For noise terminal voltage reduction	2200pF/1kV
C3: Capacitor for Vod voltage smoothing	10μF/50V
C4: Capacitor for output voltage smoothing	1000μF/25V
C5: For noise terminal voltage reduction	2200pF/AC250V
C6: Noise terminal voltage countermeasure capacitor	Please set it, if necessary Limiting element voltage DC630V or higher 0.1 to 0.22μF
D1: Rectifier diode	FRD 800V/0.5A
D2: Rectifier diode	FRD 200V/1A
D3: Diode bridge	800V/1A
R1, R3: Resistor	360kΩ±5% 0.25W
R2: Resistor	200kΩ±5% 1W
R4: Bleeder resistor	In case Io is less than 10mA, connect a bleeder resistance in parallel to C4.
T1: Switching transformer	
FL1: For noise terminal voltage reduction	Please set it, if necessary
FUSE: Fuse	Be sure to use this for safety.
ZNR: Varistor	Must be use. It protects this part from lightning surge and static electricity.

Be sure to evaluate it under the condition that it is mounted by your product. Especially, confirm whether output power never exceeds a maximum standard with current probe.

## Precautions on use of products

- When the capacity of the output smoothing electrolytic capacitor C1 is made large, output may not rise. 100μF to 2200μF is recommended. Set the rise time within 10ms.
- Set the Vod electrolytic capacitor C3 to 10μF.
- Be sure to use the VG terminal voltage within the operating voltage range.
- Set the external starting resistor (R1+R3) to 720KΩ. When reducing the resistance value, start-up may fail. Take note of the loss of the resistor when it is reduced.
- This product has built-in over current (reset type) protection function to prevent destruction at abrupt error. These protection functions are effective for prevention against destruction owing to abrupt accident, therefore, avoid using them for continuous protection circuit operating, or at transition

# Power Module Usage Precautions

[查询"BP5725"供应商](#)

## Safety Precautions

- 1) The products are designed and manufactured for use in ordinary electronic equipment (i.e. AV/OA/telecommunication/amusement equipment, home appliances). Please consult with the Company's (ROHM) sales staff if intended for use in devices requiring high reliability (e.g. medical/transport/aircraft/spacecraft equipment, nuclear power/fuel controllers, automotive/safety devices) and whose malfunction may result in injury or death. In this case, failsafe measures must be taken, including the following:
  - [a] Installation of protection circuits in order to improve system safety
  - [b] Incorporation of redundant circuits in the case of single-circuit failure
- 2) The products are designed for use under normal conditions. Application in special environments can cause a deterioration in product performance. Therefore, verification and confirmation of product performance, prior to use, is recommended. The following environments are considered to be 'special':
  - [a] Outdoors, exposed to direct sunlight or dust
  - [b] In contact with liquids, such as water, oils, chemicals, or organic solvents
  - [c] In areas where exposure to the sea air or corrosive gases (i.e. Cl<sub>2</sub>, H<sub>2</sub>S, NH<sub>3</sub>, SO<sub>2</sub>, NO<sub>2</sub>) can occur
  - [d] In places where the products may be in contact with static electricity or electromagnetic waves
  - [e] In proximity to heat-producing items, plastic cords, or flammable materials
  - [f] In contact with sealing or coating products, such as resin
  - [g] In contact with unclean solder or exposed to water or water-soluble cleaning agents used after soldering
  - [h] In areas where dew condensation occurs
- 3) The products are not designed to be radiation resistant
- 4) The Company is not responsible for any problems resulting from use of the products under conditions not recommended herein.
- 5) The Company should be notified of any product safety issues. Moreover, product safety issues should be periodically monitored by the customer.

## Application Notes

- 1) A sufficient margin must be allowed if changes are made to the peripheral circuit due to variations in the inherent tolerances of the external components as well as transient and static characteristics. In addition, please be aware that the Company has not conducted investigations on whether or not particular changes in the example application circuits would result in patent infringement.
- 2) The application examples, their constants, and other types of information contained herein are applicable only when the products are used in accordance with standard methods.  
Therefore, if mass production is intended, sufficient consideration to external conditions must be made.

## Notes Regarding Industrial Property

- 1) The specifications included herein contain information related to the Company's industrial property. Their use other than pertaining to the relevant products is forbidden. Duplication and/or disclosure to a third party without express written permission is strictly prohibited.
- 2) Product information and data, including application examples, contained in the specifications are for reference purposes only; the Company does not guarantee the industrial/intellectual property rights or any other rights of a third party. Accordingly, the Company shall not bear responsibility for:
  - [a] Infringement of the intellectual property rights of a third party
  - [b] Problems arising from the use of the products listed herein
- 3) The Company prohibits the purchaser from exercising or using the intellectual/industrial property rights or any rights belonging to or are controlled by the Company, other than the right to use, sell, or dispose of the products.

## Appendix

---

### Notes

- No technical content pages of this document may be reproduced in any form or transmitted by any means without prior permission of ROHM CO.,LTD.
- The contents described herein are subject to change without notice. The specifications for the product described in this document are for reference only. Upon actual use, therefore, please request that specifications to be separately delivered.
- Application circuit diagrams and circuit constants contained herein are shown as examples of standard use and operation. Please pay careful attention to the peripheral conditions when designing circuits and deciding upon circuit constants in the set.
- Any data, including, but not limited to application circuit diagrams information, described herein are intended only as illustrations of such devices and not as the specifications for such devices. ROHM CO.,LTD. disclaims any warranty that any use of such devices shall be free from infringement of any third party's intellectual property rights or other proprietary rights, and further, assumes no liability of whatsoever nature in the event of any such infringement, or arising from or connected with or related to the use of such devices.
- Upon the sale of any such devices, other than for buyer's right to use such devices itself, resell or otherwise dispose of the same, no express or implied right or license to practice or commercially exploit any intellectual property rights or other proprietary rights owned or controlled by
- ROHM CO., LTD. is granted to any such buyer.
- Products listed in this document are no antiradiation design.

The products listed in this document are designed to be used with ordinary electronic equipment or devices (such as audio visual equipment, office-automation equipment, communications devices, electrical appliances and electronic toys).

Should you intend to use these products with equipment or devices which require an extremely high level of reliability and the malfunction of which would directly endanger human life (such as medical instruments, transportation equipment, aerospace machinery, nuclear-reactor controllers, fuel controllers and other safety devices), please be sure to consult with our sales representative in advance.

It is our top priority to supply products with the utmost quality and reliability. However, there is always a chance of failure due to unexpected factors. Therefore, please take into account the derating characteristics and allow for sufficient safety features, such as extra margin, anti-flammability, and fail-safe measures when designing in order to prevent possible accidents that may result in bodily harm or fire caused by component failure. ROHM cannot be held responsible for any damages arising from the use of the products under conditions out of the range of the specifications or due to non-compliance with the NOTES specified in this catalog.

Thank you for your accessing to ROHM product informations.

More detail product informations and catalogs are available, please contact your nearest sales office.

**ROHM Customer Support System**

**THE AMERICAS / EUROPE / ASIA / JAPAN**

[www.rohm.com](http://www.rohm.com)

Contact us : [webmaster@rohm.co.jp](mailto:webmaster@rohm.co.jp)