

<Transistor>

2SA1993

For Low Frequency Amplify Application
Silicon PNP Epitaxial Type Micro(Frame type)

[查询"2SA1993"供应商](#)

DESCRIPTION

2SA1993 is a silicon PNP epitaxial type transistor. It is designed for low frequency voltage amplify application.

FEATURE

- Small collector to emitter saturation voltage.
 $V_{CE(sat)} = -0.3V$ max (@ $I_C = -100mA, I_B = -10mA$)
- Excellent linearity of DC forward current gain
- Small package for easy mounting

APPLICATION

For small machine low frequency voltage amplify application.

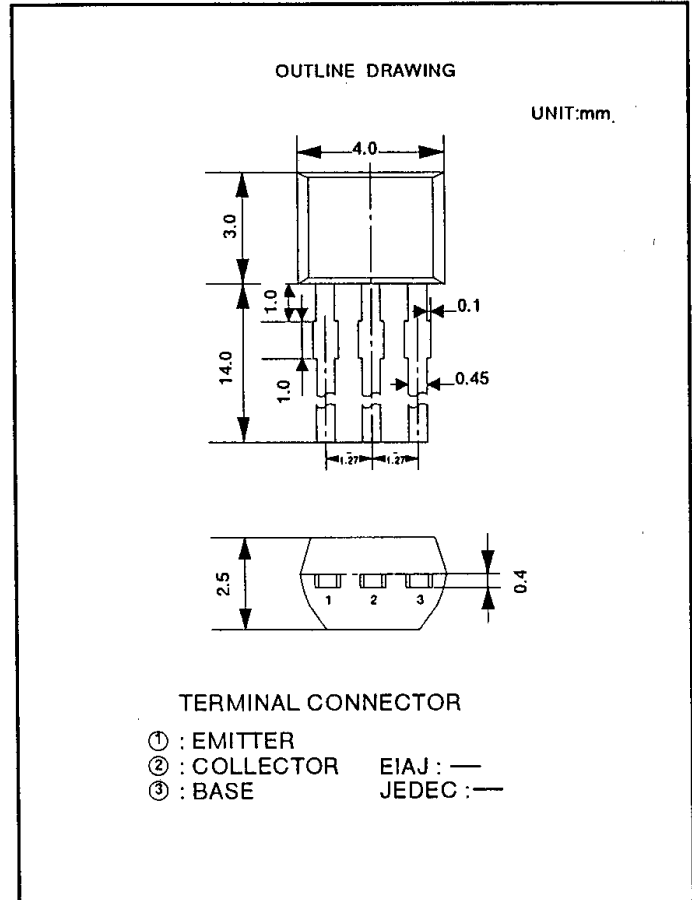
MAXIMUM RATINGS (Ta=25°C)

SYMBOL	PARAMETER	RATINGS	UNIT
V _{CB0}	Collector to Base voltage	-50	V
V _{EB0}	Emitter to Base voltage	-6	V
V _{CE0}	Collector to Emitter voltage	-50	V
I _C	Collector current	-200	mA
P _C	Collector dissipation (Ta=25°C)	450	mW
T _J	Junction temperature	+125	°C
T _{stg}	Storage temperature	-55 to +125	°C

ELECTRICAL CHARACTERISTICS (Ta=25°C)

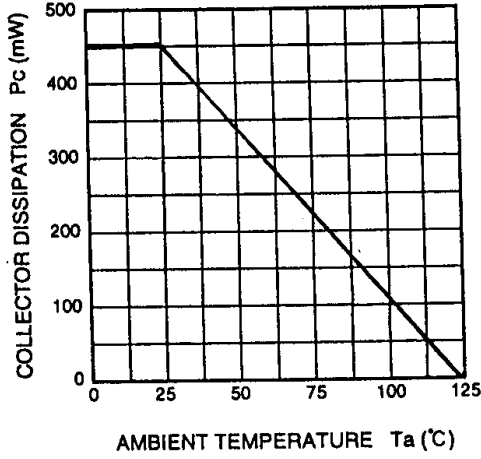
SYMBOL	PARAMETER	TEST CONDITIONS	LIMITS			UNIT
			MIN	TYP	MAX	
V _{(BR)CEO}	C to E break down voltage	I _C = -100 μA, R _{BE} = ∞	-50			V
I _{CBO}	Collector cut off current	V _{CB} = -50V, I _E = 0			-0.1	μA
I _{EBO}	Emitter cut off current	V _{EB} = -6V, I _C = 0			-0.1	μA
h _{FE} *	DC forward current gain	V _{CE} = -6V, I _C = -1mA	150		500	—
h _{FE}	DC forward current gain	V _{CE} = -6V, I _C = -0.1mA	50			—
V _{CE(sat)}	C to E saturation voltage	I _C = -100mA, I _B = -10mA			-0.3	V
f _r	Gain band width product	V _{CE} = -6V, I _E = 10mA		200		MHz
C _{ob}	Collector output capacitance	V _{CB} = -6V, I _E = 0, f = 1MHz		4.0		pF
NF	Noise figure	V _{CE} = -6V, I _E = 0.3mA, f = 100Hz, R _G = 10kΩ			20	dB

ITEM	E	F
h _{FE}	150~300	250~500

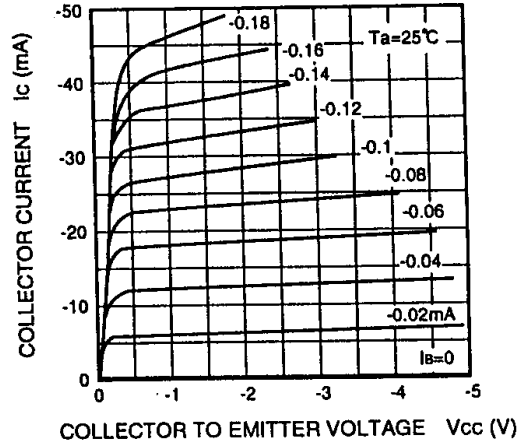


TYPICAL CHARACTERISTICS

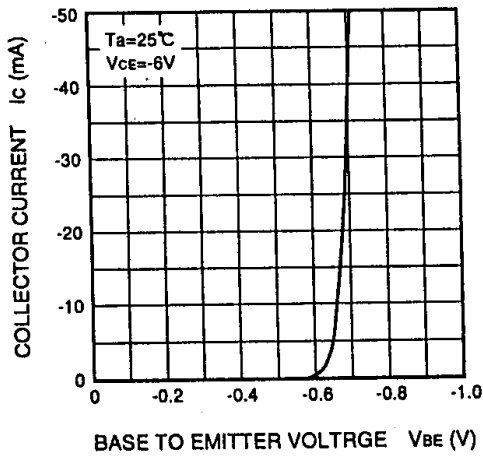
COLLECTOR DISSIPATION
VS. AMBIENT TEMPERATURE



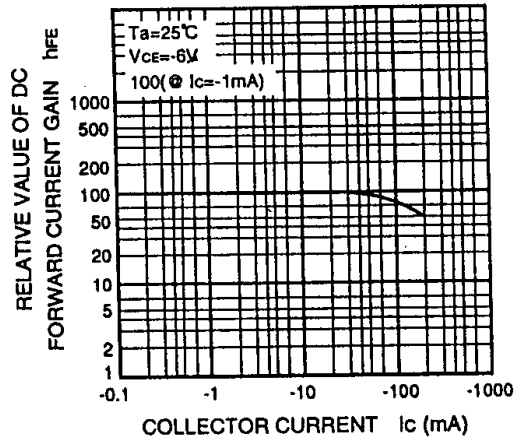
COMMON EMITTER OUTPUT



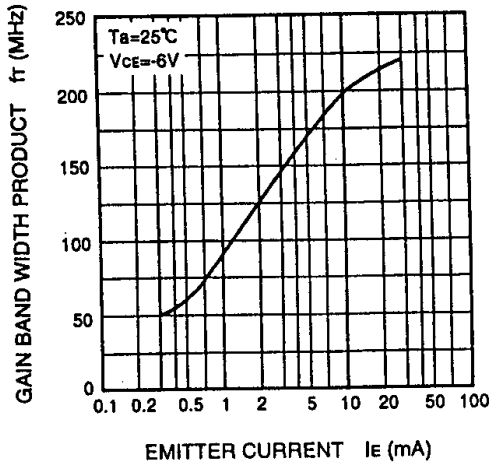
COMMON EMITTER TRANSFER



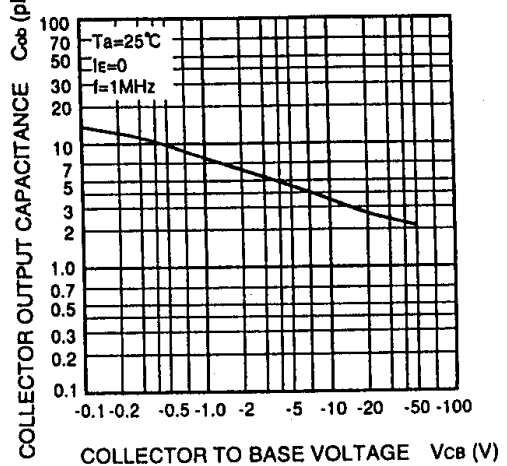
DC FORWARD CURRENT GAIN
VS. COLLECTOR CURRENT



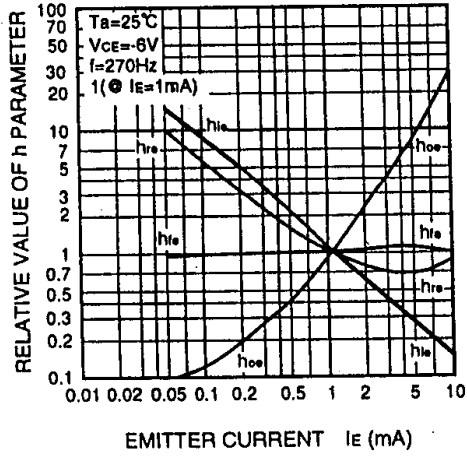
GAIN BAND WIDTH PRODUCT
VS. EMITTER CURRENT



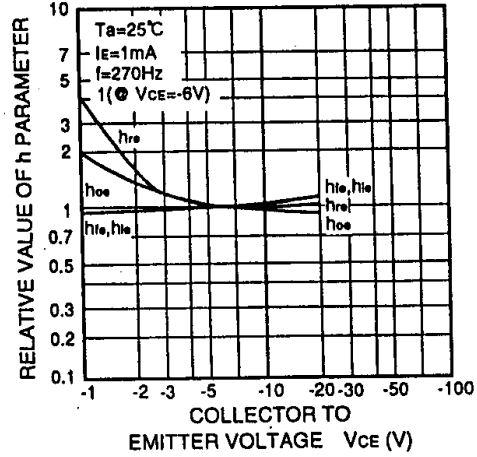
COLLECTOR OUTPUT CAPACITANCE
VS. COLLECTOR TO BASE VOLTAGE



h PARAMETER VS. EMITTER CURRENT



h PARAMETER VS. COLLECTOR TO EMITTER VOLTAGE



COMMON EMITTER h PARAMETER (TYPICAL VALUE)

Symbol	Parameter	Test conditions	Limits	Unit
h_{ie}	Closed loop small signal input impedance	$T_a=25^\circ\text{C}$ $V_{CE}=-6\text{V}$ $I_E=1\text{mA}$ $f=270\text{Hz}$	7.0	$k\Omega$
h_{re}	Open loop small signal reverse voltage amplification factor		0.1	$\times 10^{-3}$
h_{fe}	Closed loop small signal forward current amplification factor		250	—
h_{oe}	Open loop small signal output admittance		18	μS

 **ISAHAYA ELECTRONICS CORPORATION**

<http://www.idc-com.co.jp>
6-41, TSUKUBA, ISAHAYA, NAGASAKI, 854-0065, JAPAN

Keep safety in your circuit designs !

Isahaya Electronics Corporation puts the maximum effort into making semiconductor products better and more reliable, but there is always the possibility that trouble may occur with them. Trouble with semiconductors may lead to personal injury, fire or property damage. Remember to give consideration to safety when making your circuit designs, with appropriate measures such as (i) placement of substitutive, auxiliary circuits, (ii) use of non-flammable material or (iii) prevention against any malfunction or mishap.

Notes regarding these materials

·These materials are intended as reference to assist out customers in the selection of the Isahaya semiconductor product best suited to the customer's application, they do not convey any license under any intellectual property rights, or any other rights, belonging to Isahaya Electronics Corporation or a third party.
·Isahaya Electronics Corporation assumes no responsibility for any damage, or infringement of any third-party rights, originating in the use of any product data, diagrams, charts or circuit application examples contained in the materials.
·All information contained in these materials, including product data, diagrams and charts, represent information on products at the time of publication of these materials, and are subject to change by Isahaya Electronics Corporation without notice due to product improvements or other reasons. It is therefore recommended that customers contact Isahaya Electronics Corporation or authorized Isahaya Semiconductor product distributor for the latest product information before purchasing a product listed herein.
·The prior written approval of Isahaya Electronics Corporation is necessary to reprint or reproduce in whole or in part these materials.
·If these products or technologies are subject to the Japanese export control restrictions, they must be exported under a license from the Japanese government and cannot be imported into a country other than the approved destination. Any diversion or reexport contrary to the export control laws and regulations of Japan and/or the country of destination is prohibited.
·Please contact Isahaya Electronics Corporation or an authorized Isahaya Semiconductor product distributor for further details on these materials or the products contained therein.