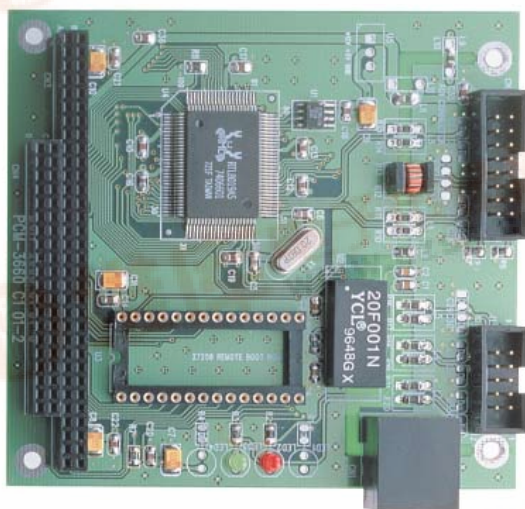


PCM-3660

PC/104 Ethernet Module



Introduction

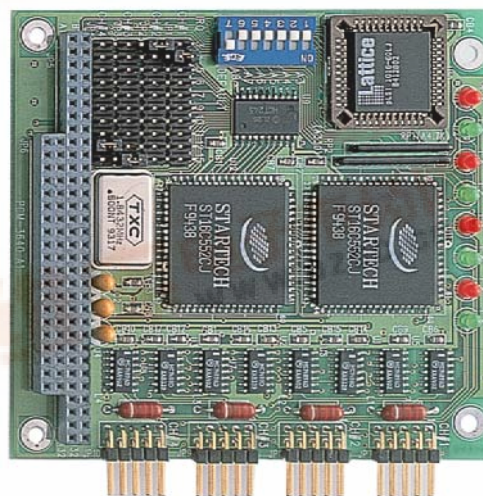
- Hardware and software compatible with Novell NE2000
- 10Mbps throughput
- 8/16-bit data bus (auto-sensing)
- Remote Boot ROM socket for diskless operation
- I/O : 300, 320, 340, or 360H
- IRQ : 3,4,5,9,10,11,12, or 15
- Boot ROM address: 0xC8000, 0xCC000, 0xD0000, or 0xD4000H
- Built-in 10Base-T transceiver
- AUI connector supports external transceiver (MAU) for 10Base-5 and 10Base-FOIRL (fiber optic)
- Optional +5V only 10Base-2 external transceiver module (PCM-3661)
- Single +5V power supply @ 400mA (max.) when external transceiver is not used
- Includes software drivers for ODI, NDIS, PC/TCP, PC-NFS, NCSA, LAN manager, PATHWAY, WFW, and SCO UNIX

PCM-3640

PC/104 4-port RS-232 Module

Introduction

- Four RS-232 ports with 10-pin connectors
- 16C550 UARTs with 16-byte FIFO
- Speeds up to 115 Kbps
- Choose address COM1 to COM4 or other user selectable I/O address
- Individually selectable IRQ for each port (3 to 7, 9 to 12, or 15)
- Full RS-232 interface support (T x D, R x D, RTS, CTS, DTR, DSR, DCD, and GND)
- Power requirement : +5V@ 220mA (typical)



This datasheet has been downloaded from:

www.EEworld.com.cn

Free Download

Daily Updated Database

100% Free Datasheet Search Site

100% Free IC Replacement Search Site

Convenient Electronic Dictionary

Fast Search System

www.EEworld.com.cn