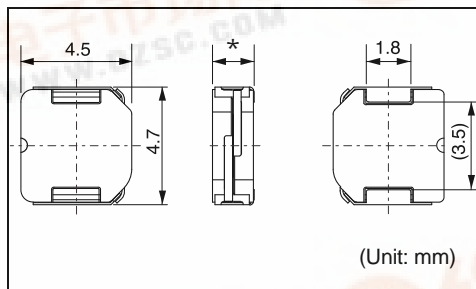
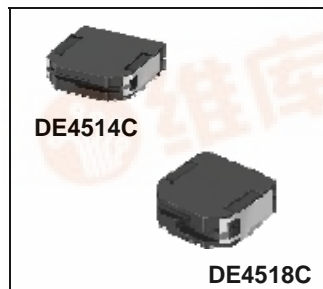


DE4514C/DE4518C

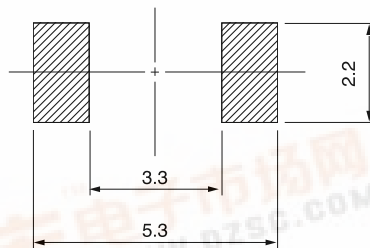
Inductance Range: 1.2~33μH (DE4514C), 1.2~22μH (DE4518C)

DIMENSIONS / 外形寸法図



*DE4514C: 1.4mm Max.
DE4518C: 1.8mm Max.

Recommended patterns 推奨パターン図



(Unit: mm)

FEATURES / 特長

- Low profile (4.5×4.7mm square, 1.4 and 1.8mm Max. height).
- Magnetically shielded construction and low DC resistance.
- Ideal for a variety of DC-DC converter inductor applications. (DVC,DSC,Cellular phone,PDA)
- RoHS compliant.
- 小型薄形構造(4.5×4.7mm角, 高さ1.4および1.8mm Max.)
- 閉磁路構造、低直流抵抗
- 各種機器のDC-DCコンバータ用インダクタに最適 (DVC,DSC,Cellular phone,PDA)
- RoHS指令対応

SELECTION GUIDE FOR STANDARD COILS

TYPE DE4514C (Magnetically Shielded) 閉磁路タイプ (Quantity/reel; 2,000 PCS)

| 東光品番 | インダクタンス ⁽¹⁾ | 許容差 | 直流抵抗 ⁽²⁾ | 直流重畳許容電流 ⁽³⁾ | 温度上昇許容電流 ⁽³⁾ |
|------------------|--------------------------------|---------------|---|---|---|
| TOKO Part Number | Inductance ⁽¹⁾ (μH) | Tolerance (%) | DC Resistance ⁽²⁾ (mΩ) Max. (Typ.) | Inductance Decrease Current ⁽³⁾ (A) Max. (Typ.) $\frac{\Delta L}{L} = 30\%$ | Temperature Rise Current ⁽³⁾ ΔT=40°C (A) Max. (Typ.) |
| 1123AS-1R2N | 1.2 | ±30 | 60 (50) | 2.60 (3.45) | 2.45 (2.85) |
| 1123AS-1R8N | 1.8 | ±30 | 72 (60) | 2.20 (2.95) | 2.20 (2.60) |
| 1123AS-2R4M | 2.4 | ±20 | 84 (70) | 1.90 (2.55) | 2.00 (2.35) |
| 1123AS-3R3M | 3.3 | ±20 | 96 (80) | 1.70 (2.25) | 1.90 (2.25) |
| 1123AS-4R7M | 4.7 | ±20 | 120 (100) | 1.45 (1.90) | 1.55 (1.85) |
| 1123AS-6R8M | 6.8 | ±20 | 156 (130) | 1.20 (1.55) | 1.40 (1.65) |
| 1123AS-100M | 10.0 | ±20 | 192 (160) | 1.00 (1.35) | 1.25 (1.50) |
| 1123AS-120M | 12.0 | ±20 | 228 (190) | 0.90 (1.20) | 1.10 (1.30) |
| 1123AS-150M | 15.0 | ±20 | 276 (230) | 0.80 (1.05) | 1.00 (1.20) |
| 1123AS-220M | 22.0 | ±20 | 444 (370) | 0.65 (0.89) | 0.75 (0.89) |
| 1123AS-330M | 33.0 | ±20 | 648 (540) | 0.55 (0.75) | 0.63 (0.75) |

TYPE DE4518C (Magnetically Shielded) 閉磁路タイプ (Quantity/reel; 2,000 PCS)

| 東光品番 | インダクタンス ⁽¹⁾ | 許容差 | 直流抵抗 ⁽²⁾ | 直流重畳許容電流 ⁽³⁾ | 温度上昇許容電流 ⁽³⁾ |
|------------------|--------------------------------|---------------|---|---|---|
| TOKO Part Number | Inductance ⁽¹⁾ (μH) | Tolerance (%) | DC Resistance ⁽²⁾ (mΩ) Max. (Typ.) | Inductance Decrease Current ⁽³⁾ (A) Max. (Typ.) $\frac{\Delta L}{L} = 30\%$ | Temperature Rise Current ⁽³⁾ ΔT=40°C (A) Max. (Typ.) |
| 1124BS-1R2N | 1.2 | ±30 | 47 (39) | 3.50 (4.70) | 2.90 (3.40) |
| 1124BS-1R8N | 1.8 | ±30 | 56 (47) | 3.00 (3.90) | 2.70 (3.20) |
| 1124BS-2R4M | 2.4 | ±20 | 65 (54) | 2.60 (3.40) | 2.30 (2.70) |
| 1124BS-3R3M | 3.3 | ±20 | 74 (62) | 2.30 (3.00) | 2.10 (2.50) |
| 1124BS-4R3M | 4.3 | ±20 | 84 (70) | 2.00 (2.65) | 2.00 (2.40) |
| 1124BS-6R8M | 6.8 | ±20 | 106 (88) | 1.70 (2.20) | 1.90 (2.20) |
| 1124BS-100M | 10.0 | ±20 | 144 (120) | 1.30 (1.75) | 1.70 (2.00) |
| 1124BS-220M | 22.0 | ±20 | 306 (255) | 0.91 (1.20) | 1.00 (1.20) |

(1) Inductance is measured with a LCR meter 4284A* or equivalent. Test frequency at 100kHz
 (2) DC Resistance is measured with a Digital Multimeter TR6871 (ADVANTEST) or equivalent.
 (3) Maximum allowable DC current is that which causes a 30% inductance reduction from the initial value, or coil temperature to rise by 40 , whichever is smaller.
 (Reference ambient temperature 20)
 * Agilent Technologies

(1) インダクタンスはLCRメータ4284A* または同等品により測定する。測定周波数は100kHzです。
 (2) 直流抵抗はデジタルマルチメータTR6871(Advantest)または同等品により測定する
 (3) 最大許容電流は、直流重畳電流を流した時インダクタンスの値が初期値より30%減少する直流電流値、または直流電流により、コイルの温度が40 上昇の何れか小さい値です。
 (周囲温度20 を基準とする。)
 * Agilent Technologies

