

IEC Appliance Inlet C20 with Filter, ECO design, front or rear side Mounting

Standard- or Medical-Filter

[查询"5130"供应商](#)

new

Screw-on or rivet mounting from front or rear side
Screw-On VersionScrew-on mounting from rear side, integrated thread
Screw-On Version

Snap-in mounting from front side

C20



70° C

**Description**

- Panel Mount:
Screw-on version from front or rear side, snap-in version from front side
- 2 Functions:
Appliance Inlet Protection class I, Line filter in standard and medical version
- Quick connect terminals
- Fits to type: [Kabelverbindung/16 A; 4790; 4795](#) [Kabelverbindung/16 A; 0104; 1651; 1652; 1654; 4790; 4795](#)

Approvals

- VDE License Number: 104884
- UL License Number: E72928

Characteristics

- Optimal shielding due to completely closed filter case, unpotted
- Suitable for assembly in metal plated plastic housings
- Version with class X1 and X2 (standard version) capacitors
- Universal line filter for standard applications
- Designed for standard and medical applications
- Qualified for use in equipment according IEC/EN 60950

Other versions on request

- Solder terminals
- Medical version M80
- Capacity CX 330 nF

References[General Product Information](#)**Weblinks**
[Approvals](#), [RoHS](#), [CHINA-RoHS](#), [Mating Connectors](#), [e-Store](#), [Distributor-Stock-Check](#), [Accessories](#)
Technical Data

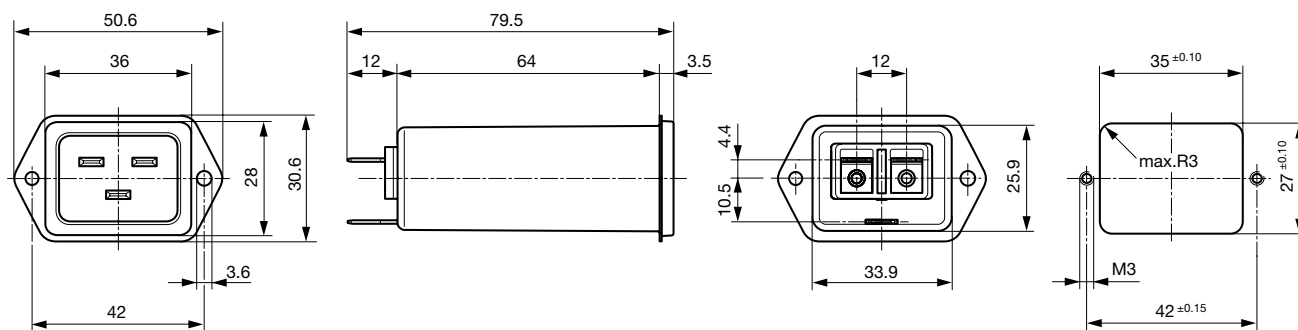
Ratings IEC	16 A @ Ta 40 °C / 250 VAC; 50 Hz
Ratings UL/CSA	20 A @ Ta 40 °C / 250 VAC; 60 Hz
Leakage Current	standard < 0.5 mA (250 V / 60 Hz) medical < 5 µA (250 V / 60 Hz)
Dielectric Strength	> 1.7 kVDC between L-N > 2.7 kVDC between L/N-PE Test voltage (2 sec)
Impulse Withstand Voltage	> 2.5 kV between L-N (CX2) > 4 kV between L-N (CX1) > 5 kV between L/N-PE (Cy2) voltage (1.2/50 µs)
Allowable Operation Temp.	-25 °C to 85 °C
Climatic Category	25/085/21 acc. to IEC 60068-1
Degree of Protection	from front side IP 40 acc. to IEC 60529
Protection Class	Suitable for appliances with protection class 1 acc. to IEC 61140
Terminal	Quick connect terminal 6.3 x 0.8 mm
Panel Thickness s	Screw: max 8 mm Mounting screw torque max 0.5 Nm Snap-in: 0.8 mm to 3 mm (all steps with one variant)
Material: Housing	Thermoplast / steel tin-plated, black / metallic, UL 94V-0

Appliance-Inlet/-Outlet	C20 acc. to IEC/EN 60320-1, UL 498, CSA C22.2 no. 42 (for cold conditions) pin-temperature 70 °C, 16 A, Protection Class 1
Line Filter	Standard and Medical Version, IEC 60939, IEC 60601-1, UL 1283, UL 544, EN 133 200, CSA C22.2 no. 8 Technical details
MTBF	> 3'000'000 h acc. to MIL-HB-217 F

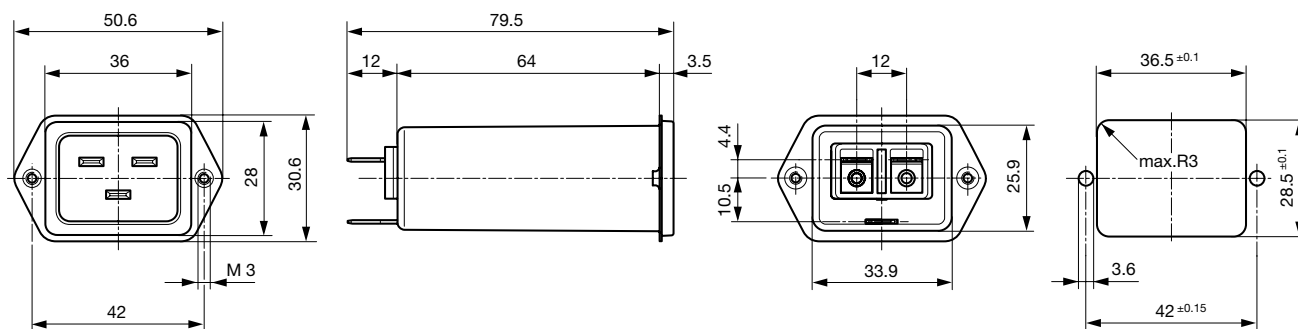
[查询"5130"供应商](#)**Dimensions**

Front or rear side mounting for screws with nuts or blind rivets

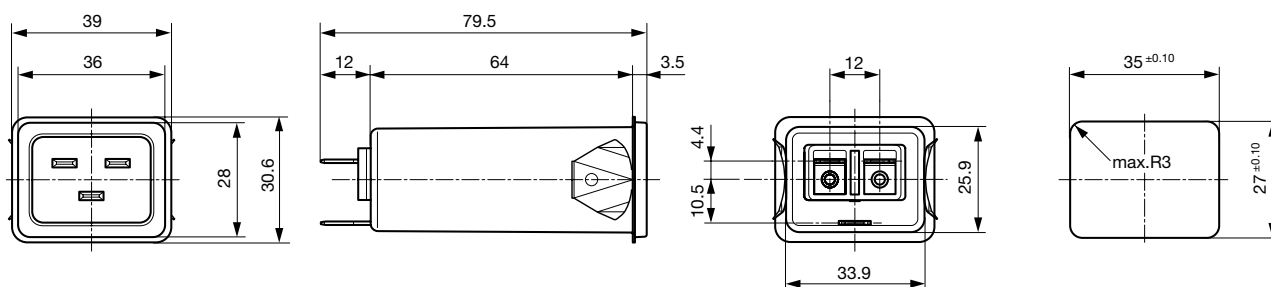
79.5 mm



Rear side mounting with pre-formed, threaded holes for M3 screws



Snap-in mounting from front side



Technical Data of Filter-C

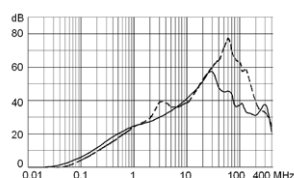
Diagrams

- 1) Line
- 2) Load

- - - differential mode common mode

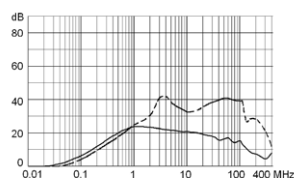
16 A

20 A



16 A

20 A



Rated Current IEC [A]	Rated Current UL [A]	Filter-Type	Panel mounting	Mounting side	Terminal	Capacitor	Order Number
16	16	Standard Version	Screw-on/Rivet	Front-Side	Quick connect terminals	X2	5130.0000
16	20	Standard Version	Screw-on/Rivet	Front-Side	Quick connect terminals	X2	5130.0001
16	16	Standard Version	Screw-on/Rivet	Front-Side	Quick connect terminals	X1	5130.0100
16	20	Standard Version	Screw-on/Rivet	Front-Side	Quick connect terminals	X1	5130.0101
16	16	Standard Version	Screw	Rear-Side	Quick connect terminals	X2	5130.1000
16	20	Standard Version	Screw	Rear-Side	Quick connect terminals	X2	5130.1001
16	16	Standard Version	Screw	Rear-Side	Quick connect terminals	X1	5130.1100
16	20	Standard Version	Screw	Rear-Side	Quick connect terminals	X1	5130.1101
16	16	Standard Version	Snap-in	Front-Side	Quick connect terminals	X2	5130.2000
16	20	Standard Version	Snap-in	Front-Side	Quick connect terminals	X2	5130.2001
16	16	Standard Version	Snap-in	Front-Side	Quick connect terminals	X1	5130.2100
16	20	Standard Version	Snap-in	Front-Side	Quick connect terminals	X1	5130.2101
16	16	Medical Version (M5)	Screw-on/Rivet	Front-Side	Quick connect terminals	X2	5130.0200
16	20	Medical Version (M5)	Screw-on/Rivet	Front-Side	Quick connect terminals	X2	5130.0201
16	16	Medical Version (M5)	Screw-on/Rivet	Front-Side	Quick connect terminals	X1	5130.0300
16	20	Medical Version (M5)	Screw-on/Rivet	Front-Side	Quick connect terminals	X1	5130.0301

查询"5130"供应商

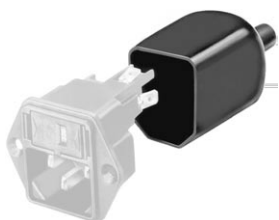
Rated Current IEC [A]	Rated Current UL [A]	Filter-Type	Panel mounting	Mounting side	Terminal	Capacitor	Order Number
16	16	Medical Version (M5)	Screw	Rear-Side	Quick connect terminals	X2	5130.1200
16	20	Medical Version (M5)	Screw	Rear-Side	Quick connect terminals	X2	5130.1201
16	16	Medical Version (M5)	Screw	Rear-Side	Quick connect terminals	X1	5130.1300
16	20	Medical Version (M5)	Screw	Rear-Side	Quick connect terminals	X1	5130.1301
16	16	Medical Version (M5)	Snap-in	Front-Side	Quick connect terminals	X2	5130.2200
16	20	Medical Version (M5)	Snap-in	Front-Side	Quick connect terminals	X2	5130.2201
16	16	Medical Version (M5)	Snap-in	Front-Side	Quick connect terminals	X1	5130.2300
16	20	Medical Version (M5)	Snap-in	Front-Side	Quick connect terminals	X1	5130.2301

Type for screw on mounting from rear side has pre-threaded holes for M3 screws

Packaging unit 20 Pcs

Accessories

Description



Assorted Covers
Rear Cover

0859.0047



Cord retaining kits
Cord retaining strain relief

Flat head, L

4700.0011

Mating Inlets/Plugs

Category / Description



Connector Overview complete

IEC Connector C19, Rewireable, Angled

4790

IEC Connector C19, Rewireable, Straight

4795

Connector further types to 5130

Power Supply or Interconnection Cord Overview complete

Divers Power Supply and Interconnection Cords 16 A

Kabelverbindung/16 A

Power Supply or Interconnection Cord further types to 5130

[Main Power Connectors](#)
[查询5130供应商](#)



Connector Overview complete

IEC Connector C19, Rewireable, Straight	0104
IEC Connector C19, Rewireable, Angled	1651
IEC Connector C19, Rewireable, Straight	1652
IEC Connector C19, Rewireable, Angled	4790
IEC Connector C19, Rewireable, Straight	4795

Connector further types to 5130



Power Cord Overview complete

Power Cord with IEC Connector C19, Straight	1654
---	------

Power Cord further types to 5130

Power Supply or Interconnection Cord Overview complete

Divers Power Supply and Interconnection Cords 16 A	Kabelverbindung/16 A
--	----------------------

Power Supply or Interconnection Cord further types to 5130