

Type: CS53, CS53N

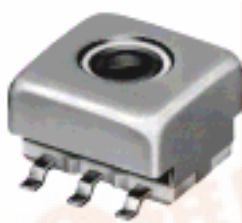
◆ **Product Description**

- 6.5×5.9mm Max.(L×W), 3.8mm Max. Height.(CS53)
- 6.2×5.9mm Max.(L×W), 3.8mm Max. Height.(CS53N)
- Inductance: 5 μ H Max.
- Operating frequency:150MHz Max.
- In addition to the reference versions of parameters shown here, custom designs are available to meet your exact requirements.

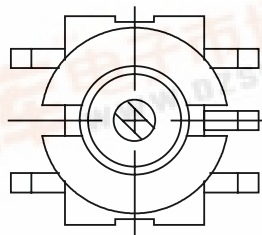
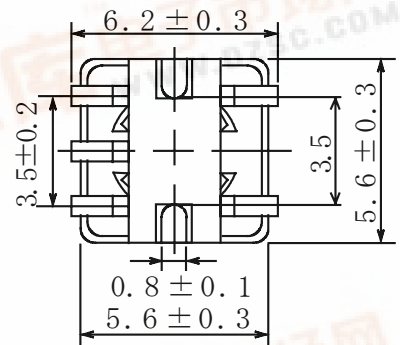
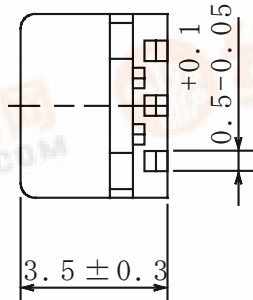
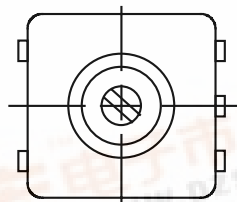
◆ **Feature**

- Variable type.
- Both shielded(CS53) and unshielded(CS53N) types are available.
- RoHS Compliance

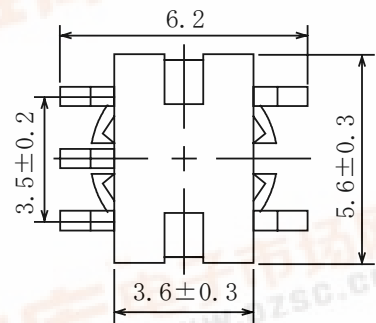
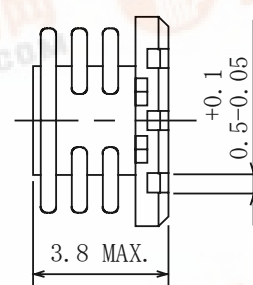
◆ **Dimensions (mm)**



CS53



CS53N



- * Dimension does not include solder used on coil.
- * Pin pitch should be measured at the root of terminal.
- * Dimensions without tolerance are approx.

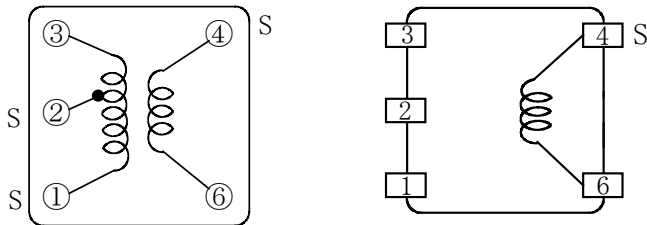
Please refer to the sales offices on our website for a representative near you

www.sumida.com



Type: CS53, CS53N

◆ Connection (Bottom View)



CS53

CS53N

“S” is winding start.

◆ Specification(CS53)

	(1 - 3)	Measuring Conditions
Inductance	1 . 1 4 μ H \pm 5 % Within	7 . 9 6 MH z
Unloaded Q	1 8 Ref.	7 . 9 6 MH z

◆ Specification(CS53N)

NO.	Part No.	Winding (T) (4-6)	Inductance (Typ.)(4-6)	Tuning Capacitance (4-6) (Within)	Qu(Min.) (4-6)	Measuring Frequency
01	TG-4OP-1298-Ø1	1	5.1nH	73pF \pm 5%	35	120MHz
02	TG-4OP-1298-Ø2	2	27.6nH	59.5pF \pm 1%	35	100MHz
03	TG-4OP-1298-Ø3	3	55.3nH	35.0pF \pm 1%	40	100MHz
04	TG-4OP-1298-Ø4	4	94.6nH	22.1pF \pm 1%	40	100MHz
05	TG-4OP-1298-Ø5	5	149.7nH	14.4pF \pm 1%	40	100MHz