

EDP, EOP Series



UL Recognized
CSA Certified
VDE Approved

EDP Series

The EDP series RFI filters provide enhanced differential mode performance for applications requiring more line-to-line protection. The EDP filters feature low leakage current for European safety requirements.

This series is likewise PC board mounted and is only slightly taller than the EOP series filters. The EDP filters are also available up to 10 amps.

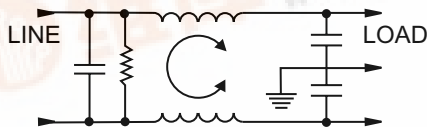
EOP Series

The EOP series RFI power line filters are general purpose filters which are effective in removing both common and differential mode noise for susceptibility applications. These filters have low leakage current for European safety requirements.

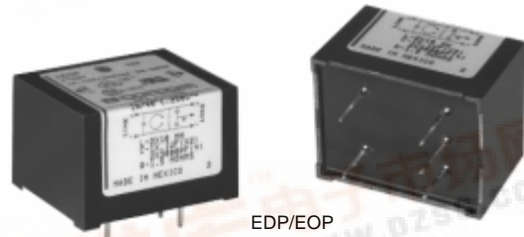
The compact design allows PC mounting with minimal space requirements. Available from 1 to 10 amps, the filters provide a cost effective alternative to on board components.

Electrical Schematic

EDP/EOP Models



Resistor location for reference only.



Specifications

Maximum leakage current, each line-to-ground

| | |
|------------------|--------|
| @ 120 VAC 60 Hz: | .22 mA |
| @ 250 VAC 50 Hz: | .38 mA |

Hipot rating (one minute):

| | |
|----------------|----------|
| line-to-ground | 1500 VAC |
| line-to-line | 1450 VDC |

Operating frequency:

50/60 Hz

Rated voltage (max.):

250 VAC

Rated current:

| | |
|-------------|-----|
| 1EDP/1EOP | 1A |
| 3EDP/3EOP | 3A |
| 6EDP/6EOP | 6A |
| 10EDP/10EOP | 10A |

EOP- Minimum insertion loss in dB:

Line-to-ground in 50 ohm circuit

| Current Rating | Frequency-MHz | | | | | |
|----------------|---------------|----|----|----|----|----|
| | .15 | .5 | 1 | 5 | 10 | 30 |
| 1A | 32 | 41 | 54 | 54 | 46 | 40 |
| 3A | 18 | 28 | 35 | 41 | 40 | 40 |
| 6A | 10 | 20 | 28 | 37 | 40 | 40 |
| 10A | 5 | 14 | 19 | 27 | 33 | 40 |

Line-to-line in 50 ohm circuit

| Current Rating | Frequency-MHz | | | | | | | |
|----------------|---------------|----|----|----|----|----|----|----|
| | .15 | .5 | 1 | 2 | 4 | 10 | 20 | 30 |
| 1A | 1 | 6 | 19 | 39 | 48 | 52 | 38 | 35 |
| 3A | 1 | 4 | 9 | 9 | 28 | 41 | 36 | 35 |
| 6A | 1 | 4 | 9 | 9 | 40 | 40 | 42 | 35 |
| 10A | 1 | 4 | 9 | 9 | 14 | 35 | 42 | 35 |

EDP — Minimum insertion loss in dB:

Line-to-ground in 50 ohm circuit

| Current Rating | Frequency-MHz | | | | | |
|----------------|---------------|----|----|----|----|----|
| | .15 | .5 | 1 | 5 | 10 | 30 |
| 1A | 32 | 41 | 54 | 54 | 46 | 40 |
| 3A | 18 | 28 | 35 | 41 | 40 | 40 |
| 6A | 10 | 20 | 28 | 37 | 40 | 40 |
| 10A | 5 | 14 | 19 | 27 | 33 | 40 |

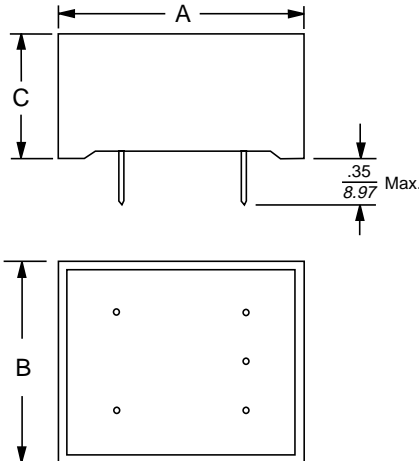
Line-to-line in 50 ohm circuit

| Current Rating | Frequency-MHz | | | | | |
|----------------|---------------|----|----|----|----|----|
| | .15 | .5 | 1 | 5 | 10 | 30 |
| 1A | 4 | 14 | 42 | 42 | 44 | 38 |
| 3A | 4 | 14 | 24 | 38 | 38 | 38 |
| 6A | 4 | 14 | 22 | 30 | 34 | 34 |
| 10A | 6 | 16 | 22 | 40 | 50 | 45 |

EDP, EOP Series

Case Style

EDP/EOP



Pins .025 square

Case Dimensions

| Part No. | A (max) | B (max) | C (max) |
|------------|---------------------|---------------------|----------------------|
| EDP | 1.44 36.6 | 1.24 31.5 | 0.95 24.15 |
| EOP | 1.44 36.6 | 1.24 31.5 | 0.78 19.9 |

Part Numbers

| | |
|-------|-------|
| 1EDP | 1EOP |
| 3EDP | 3EOP |
| 6EDP | 6EOP |
| 10EDP | 10EOP |

Mounting Holes Pattern & Clearance

