

KR Electronics 2648 Bandpass Filter

General Description

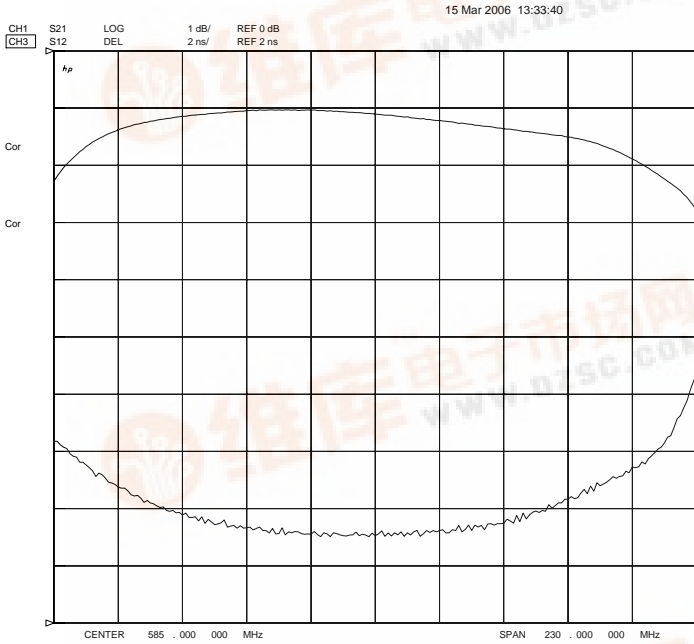
KR 2648 is a 585 MHz bandpass filter. Other center frequencies and bandwidths available. Please consult the factory.

Features

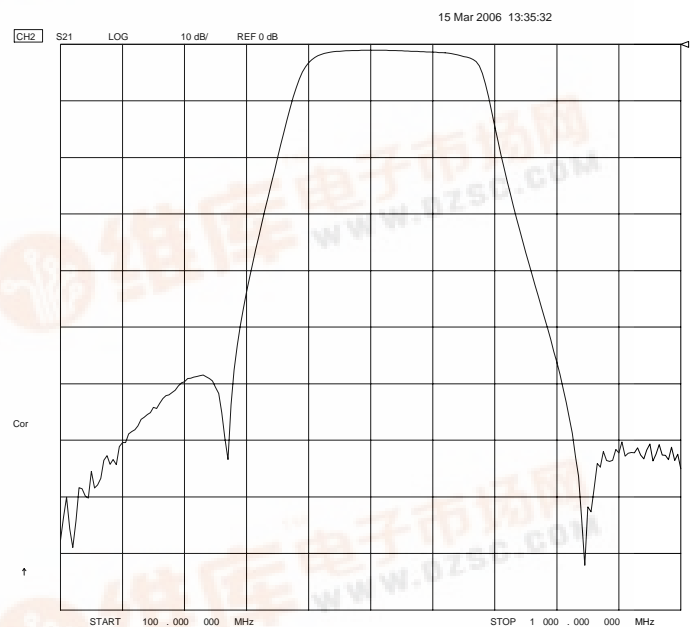
- SMA Connectors
- Sharp Transition to Stopband
- 50 Ω Source and Load

Typical Performance

Passband Amplitude & Group Delay (1 dB/div & 2 nsec/div)



Overall Response (10 dB/div)



KR Electronics, Inc.
91 Avenel Street
Avenel, NJ 07001

Web www.krfilters.com
Email sales@krfilters.com
Phone (732) 636-1900
Fax (732) 636-1982

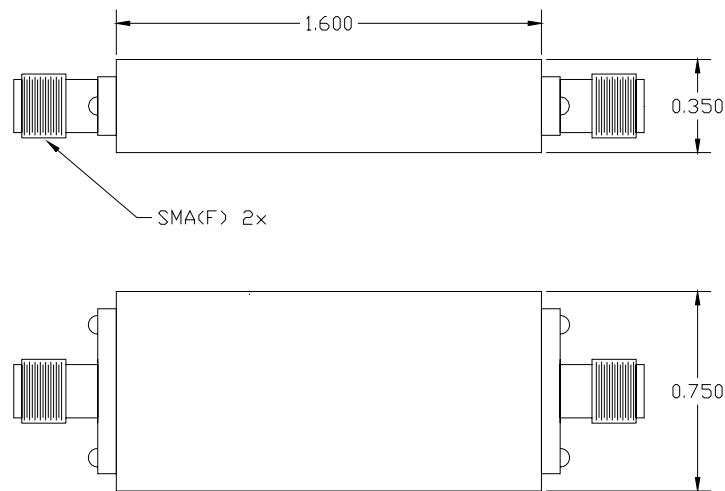


KR Electronics 2648 Bandpass

Specifications

Parameter	Specification
Filter type	Bandpass
Center Frequency	585 MHz
Insertion Loss	< 2.5 dB (1.1 dB typical)
Bandwidth (3 dB)	230 MHz min (253 MHz typical)
Stopband Attenuation 355 MHz	50 dB min
Stopband Attenuation 815 MHz	50 dB min
Source and Load	50 Ω

Physical Dimensions



Dimensions shown in inches