

SMFB13W

[查询"SMFB13W"供应商](#)

Surface Mount Schottky Barrier Diode

Switching Type Power Supply Applications

Features

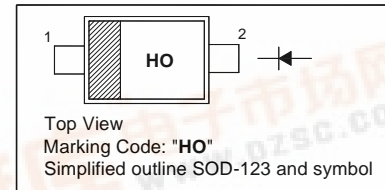
- For Use in Low Voltage, High Frequency inverters, Free Wheeling, and Polarity Protection Applications

Application

- Switching Power Supply
- Reversed Battery Connection Protection
- DC/DC Converter
- Cellular Phones

PINNING

PIN	DESCRIPTION
1	Cathode
2	Anode



Absolute Maximum Ratings ($T_a = 25^\circ\text{C}$)

Parameter	Symbol	Value	Unit
Peak Repetitive Reverse Voltage	V_{RRM}	30	V
Average Rectified Output Current	$I_{F(AV)}$	1.0	A
Peak One Cycle Surge Forward Current (Non-Repetitive 60 Hz)	I_{FSM}	22	A
Operating Temperature Range	T_j	- 40 to + 125	$^\circ\text{C}$
Storage Temperature Range	T_{stg}	- 40 to + 125	$^\circ\text{C}$

Characteristics at $T_a = 25^\circ\text{C}$

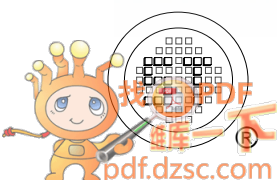
Parameter	Symbol	Max.	Unit
Peak Forward Voltage at $I_{FM} = 1\text{ A}$	V_{FM}	0.42	V
Repetitive Peak Reverse Current at $V_{RRM} = 30\text{ V}$	I_{RRM}	1	mA

SEMTECH ELECTRONICS LTD.

(Subsidiary of Sino-Tech International Holdings Limited, a company listed on the Hong Kong Stock Exchange, Stock Code: 724)

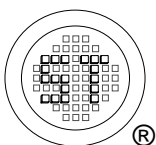
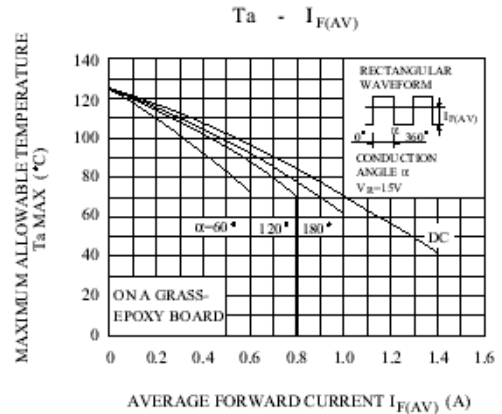
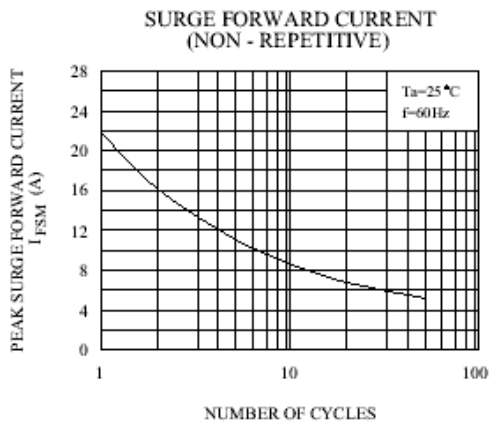
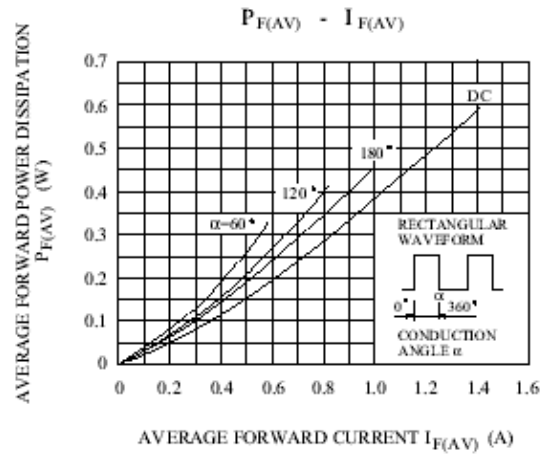
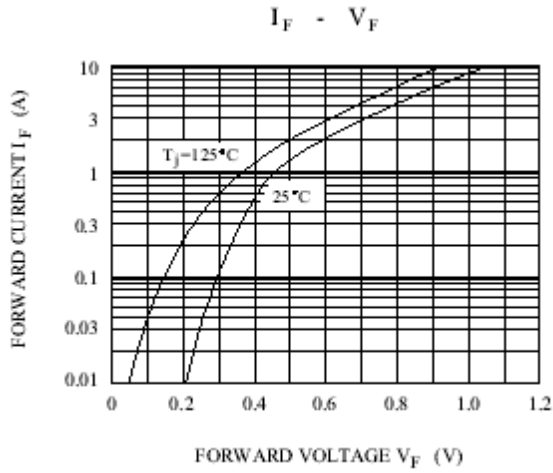


Dated :27/09/2010 Rev:01



SMFB13W

查询"SMFB13W"供应商



SEMTECH ELECTRONICS LTD.

(Subsidiary of Sino-Tech International Holdings Limited, a company listed on the Hong Kong Stock Exchange, Stock Code: 724)



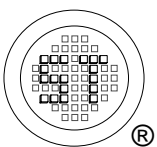
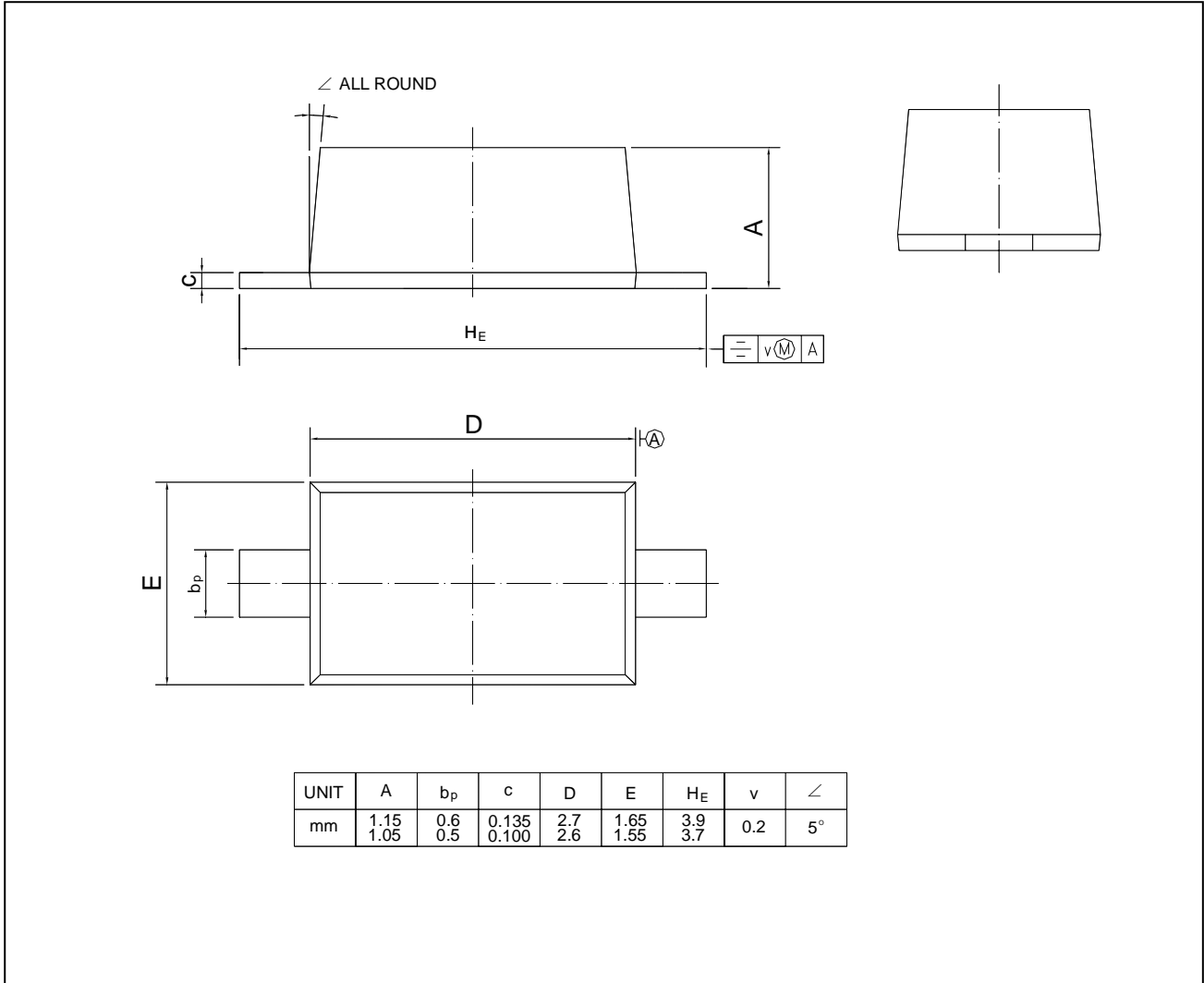
SMFB13W

[查询"SMFB13W"供应商](#)

PACKAGE OUTLINE

Plastic surface mounted package; 2 leads

SOD-123



SEMTECH ELECTRONICS LTD.

(Subsidiary of Sino-Tech International Holdings Limited, a company listed on the Hong Kong Stock Exchange, Stock Code: 724)



ISO/TS 18946 : 2002
Certificate No. 05103



ISO14001 : 2004
Certificate No. 7116



ISO 9001 : 2008
Certificate No. 0506098



BS-OHSAS 18001 : 2007
Certificate No. 7116



IECQ QC 080000
Certificate No. 16/20/04/04