

1.0 FEATURES

- Low standby power dissipation
- Up to 32 programmable notes per sound
- Eight selectable sounds with sequential selection
- Minimum external components

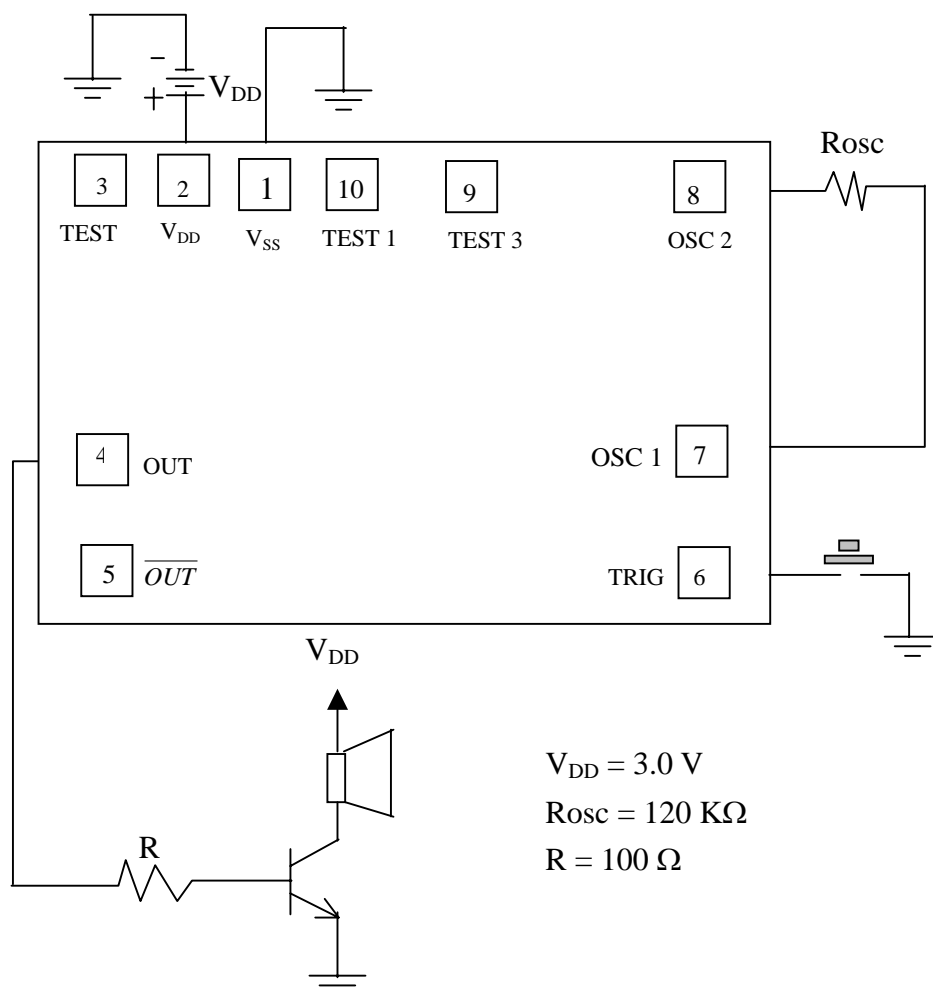
特點

- 靜態功耗低
- 每聲效多達 32 個可編程式音符
- 可選擇順序編排 8 個選擇聲效
- 外接零件少

2.0 ELECTRICAL CHARACTERISTICS 電特性

$V_{DD} = 3V$, $F_{osc} = 140\text{ KHz}$, $T_A = 25\text{ }^\circ\text{C}$ (unless otherwise specified 特別註明除外)

PARAMETER	SYMBOL	TEST CONDITIONS	LIMITS			UNIT
			MIN	TYP	MAX	
Operating Voltage 工作電壓	V_{DD}	-	2.5	3.0	3.3	V
Standby Current 靜態電流	I_{DD}	-	-	-	2.5	μA
Output Voltage High 輸出高電壓	V_{OH}	$V_{DD}=3V$, $I_{OH}=3\text{mA}$	-	-	0.5	V
Output Voltage Low 輸出低電壓	V_{OL}	$V_{DD}=3V$, $I_{OL}=-3\text{mA}$	2.2	-	-	V



3.0 APPLICATION INFORMATION 應用資料

The IC substrate should be connected to V_{DD} . 芯片襯底請接 V_{DD} .