

NEW

B-77-11

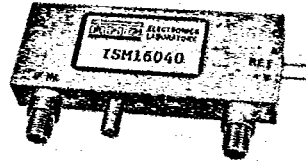


**MODEL ISM16040
ISMP16040**

**CONSTANT PHASE LIMITER
160 MHz**

T-74-11-01

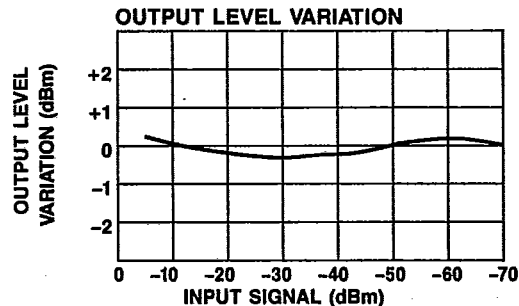
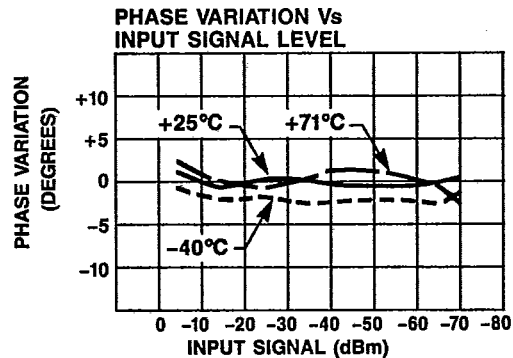
High Performance
Hermetically-Sealed
Connector and P.C. Mount Designs
1 Cubic Inch (16.4 ml)



Guaranteed Specifications*
(From -40°C to +71°C Case Temp)

Frequency	160 MHz
Bandwidth	40 MHz
Input Dynamic Range	-70 to -5 dBm
Output	
Phase Variation Over Input Dynamic Range	< 10°
Output Power (nominal)	+10 dBm
Output Level Variation Over Input Dynamic Range	±0.5 dB
Noise Figure (nominal)	10 dB
Input/Output VSWR	≤ 1.5:1
Phase Tracking**	
Two Channels	±2.5° (room temperature) ±5.0° (-40°C to +70°C)
Three Channels	±3.0° (room temperature) ±6.0° (-40°C to +70°C)
Bias Power*	-12 VDC @ 150 mA Typ

Typical Performance



Operating Characteristics

IF Impedance	50 Ohms Nominal
Package Type	ISM16040 Connectorized (C-35) ISMP16040 P.C. Mount (FP-24) (See pages 486 and 478 for physical dimensions.)

Environmental

These units are designed to meet the environmental and screening requirements of Table 1C, page 498 of the Adams-Russell catalog.

*-15 VDC option available, consult factory.
**Special order requirement — Option "M"

For additional RHG products see the latest RHG Electronics Laboratory, Inc. catalog.

Ordering Information

Model No.	Connector	Unit Price (1-9 Units)
ISM16040	SMA	\$1615
ISMP16040	P.C. Mount	\$1715



Make the Connection...

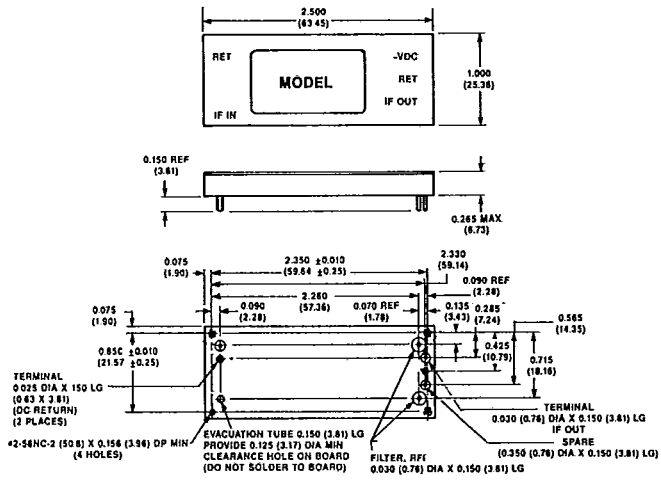
161 E. Industry Court Deer Park, NY 11729 Fax (516) 242-1222

Adams Russell
COMPONENTS GROUP

MECHANICAL DATA

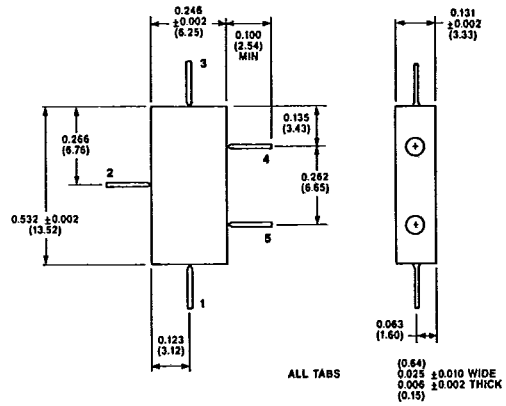
UNLESS OTHERWISE NOTED:
 .XXX = ±0.010, .XX = ±0.020
 (X = ±0.3), (.XX = ±0.5)
 DIMENSIONS IN () ARE IN MM.

FP-24



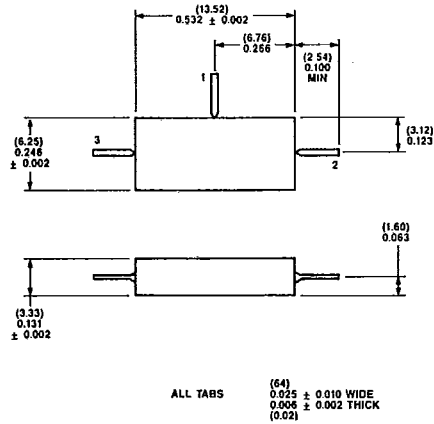
WEIGHT (APPROX.): 2.0 OUNCES 57 GRAMS

FP-25



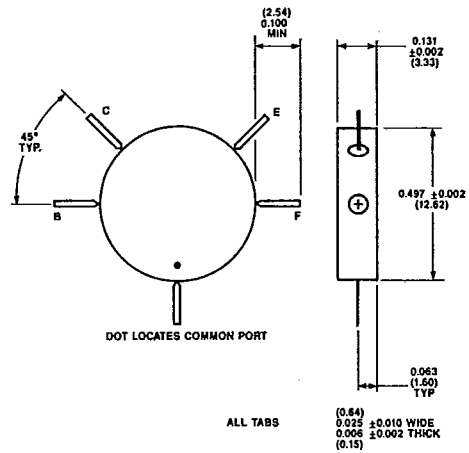
T-90-20

FP-26



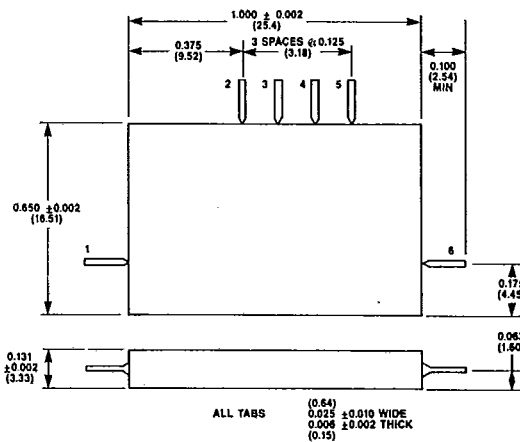
WEIGHT (APPROX.): 0.57 OUNCES 16 GRAMS

FP-27



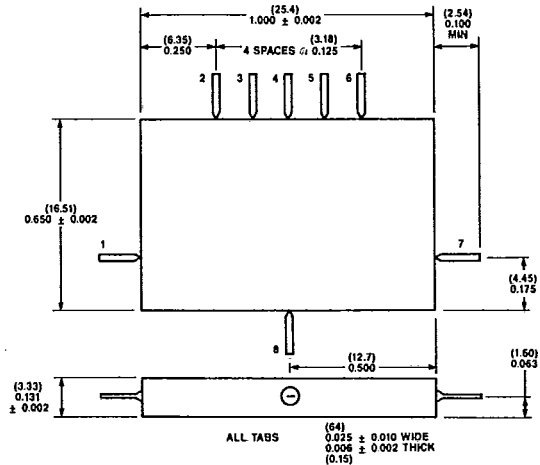
WEIGHT (APPROX.): 0.58 OUNCES 16.5 GRAMS

FP-28



WEIGHT (APPROX.): 1.25 OUNCES 35 GRAMS

FP-29



WEIGHT (APPROX.): 1.25 OUNCES 35 GRAMS