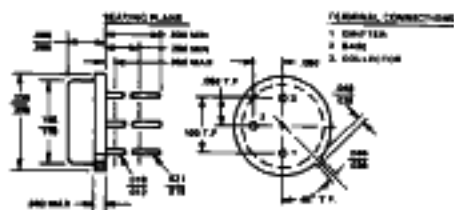


COLLECTOR CURRENT = 10 AMPS NPN TYPES—Continued

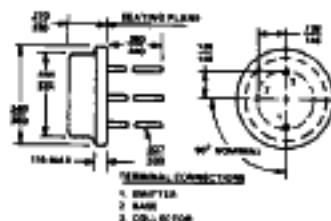
Device No	Case	V _{CBO} Volts	V _{CEO} (sus) Volts	V _{EB0} Volts	h _{FE}		V _{CE}	I _C	V _{CE} (sat)	V _{BE} (sat)	@ I _C	@ I _B	θ _{JC} °C/W	F _t MHz
					Min	Max								
2N3920	TO-3	120	60	6	100	300	2	2	1.2	1.8	10	1	1.2	80
2N4070	TO-3	120	100	8	40	120	5	5	.6	1.5	5	.5	1.5	20
2N4071	TO-3	200	150	8	40	120	5	5	.8	1.5	5	.5	1.5	20
2N4150	TO-5	100	80	5	40	120	5	5	.6	1.5	5	.5	25	60
JAN 2N4150	TO-5	100	80	5	40	120	5	5	.8	1.5	5	.5	25	60
JTX * 2N4150	TO-5	100	80	5	40	120	5	5	.6	1.5	5	.5	25	60
2N4301	TO-61	100	80	8	30	120	4	5	1	1.2	10	1.3	2	40
2N4347	TO-3	140	120	7	15	60	4	2	2	3	5	.63	1.75	1
2N4348	TO-3	140	120	7	15	80	4	5	1.4	2.2	5	.5	1.6	1
2N5006	TO-61/1	100	80	6	30	90	5	5	.9	1.8	5	.5	.2	40
2N5008	TO-61/1	100	80	6	70	200	5	5	.9	1.8	5	.5	.2	40
2N5048	TO-61	120	100	14	15	60	4	10	2	3	10	1	1.5	10
2N5049	TO-61	80	50	14	15	60	4	10	2.5	3	10	1	1.5	10
2N5083	TO-111/1	120	80	6	40	120	2	2	.5	1.3	5	.5	3.33	50
2N5084	TO-111/1	120	60	6	100	300	2	2	.5	1.3	5	.5	3.33	50
2N5085	TO-111/1	150	80	6	40	120	2	2	.5	1.3	5	.5	3.33	50
2N5152	TO-5	100	80	6	30	90	5	2.5	1.5	2.2	5	.5	25	60
2N5154	TO-5	100	80	6	70	200	5	2.5	1.5	2.2	5	.5	25	70
2N5218	TO-61	220	200	8	15	120	5	5	.5	1.2	2	.2	2	60
2N5237	TO-5	150	120	5	40	120	5	5	.6	1.5	5	.5	20	60
JAN 2N5237	TO-5	150	120	5	40	120	5	5	.6	1.5	5	.5	20	60
JTX * 2N5237	TO-5	150	120	5	40	120	5	5	.6	1.5	5	.5	20	60
2N5238	TO-5	200	170	5	40	120	5	5	.6	1.5	5	.5	20	60
2N5264	TO-3	300	180	6	30	300	2	1	.65	1.4	5	.5	1.2	50
2N5288	TO-61/1	120	100	6	30	90	5	5	.9	1.8	5	.5	1.5	50
2N5289	TO-61/1	120	100	6	70	200	5	5	.9	1.8	5	.5	1.5	50
2N5317	TO-61/1	80	80	6	30	90	5	5	.6	1.2	5	.5	2	30
2N5319	TO-61/1	100	100	6	30	90	5	5	.6	1.2	5	.5	2	30
2N5327	TO-5	100	80	5	100	300	2	1	.6	1.5	5	.25	20	80
2N5328	TO-111/1	100	80	5	50	150	5	5	.6	1.5	5	.25	3.33	80
2N5540	TO-61	325	300	8	20	60	5	5	2.5	2.5	10	2	2	20
2N5542	TO-61	175	130	8	30	90	5	5	2.5	2.5	10	1	2	20
2N5552	TO-5	120	80	7	50	150	5	5	.5	1.3	5	.5	25	50
2N5558	TO-3	150	120	7	12	60	2	4	.76	1.5	4	.4	1	1
2N5622	TO-3	80	60	6	70	200	5	5	1.5	2.2	10	1	1.5	40
2N5624	TO-3	100	80	6	30	90	5	5	1.5	2.2	10	1	1.5	40
2N5626	TO-3	100	80	6	70	200	5	5	1.5	2.2	10	1	1.5	40
2N5628	TO-3	120	100	6	30	90	5	5	1.5	2.2	10	1	1.5	40
2N5632	TO-3	100	100	7	25	100	2	5	1	2	7.5	.75	1.2	1
2N5633	TO-3	120	120	7	20	80	2	5	1	2	7.5	.75	1.2	1
2N5634	TO-3	140	140	7	15	60	2	5	1	2	7.5	.75	1.2	1
2N5730	TO-111/1	100	80	5	30	30	2	2	1.2	1.5	5	.5	3.33	60
2N5758	TO-3	100	100	7	25	100	2	3	1	1.5	3	.9	1.2	1
2N5759	TO-3	120	120	7	20	80	2	3	1	1.5	3	.3	1.2	1
2N5760	TO-3	140	140	7	15	80	2	3	1	1.5	3	.3	1.2	1
2N5854	TO-61/1	100	80	6	30	90	5	5	.9	1.8	5	.5	1.5	20
2N6128	TO-61/1	100	80	6	30	120	5	5	.9	1.8	5	.5	1.5	40
2N6232	TO-5	140	100	7	25	100	2	5	.7	1.4	5	.5	25	50

* (JTXV)

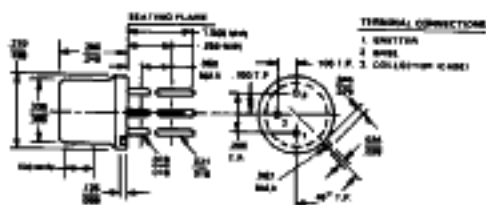
PHYSICAL DIMENSIONS - PACKAGES



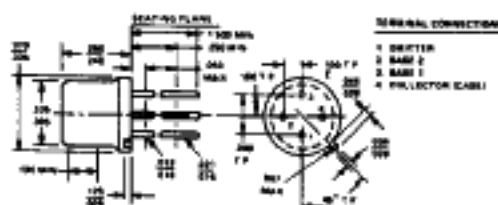
TO-46



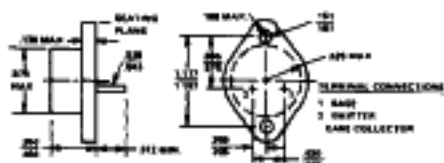
TO-8



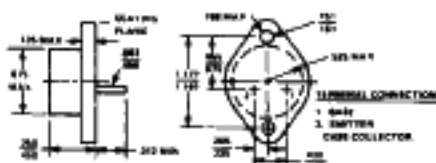
TO-5



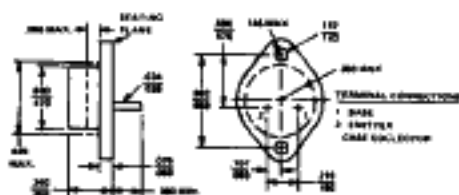
TO-33



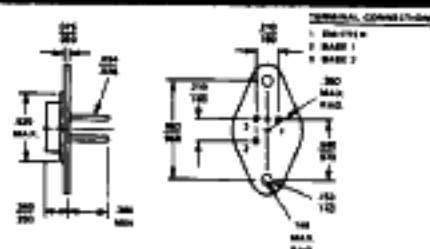
TO-3



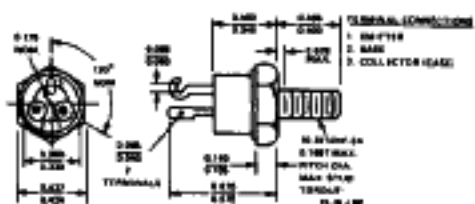
TO-3 (60 mil pins)



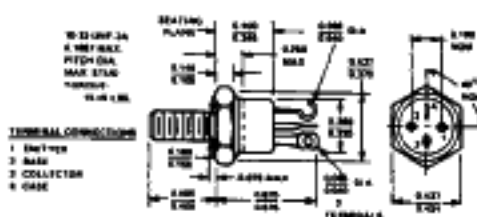
TO-66



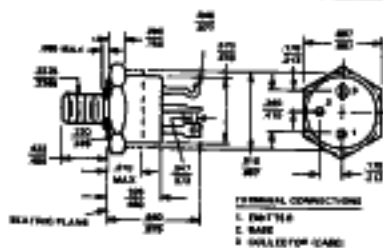
3 PIN TO-66



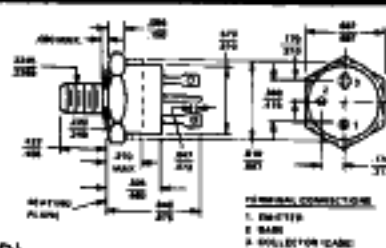
TO-111



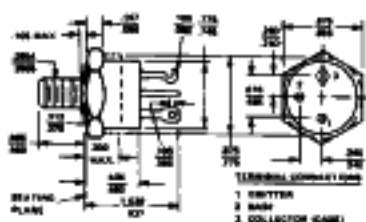
TO-111 (ISOLATED)



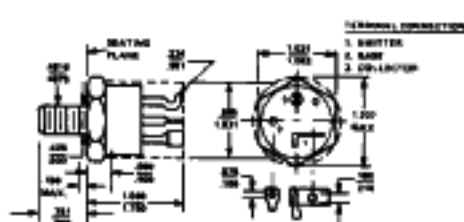
TO-61



TO-61 (ISOLATED)



TO-63



TO-114