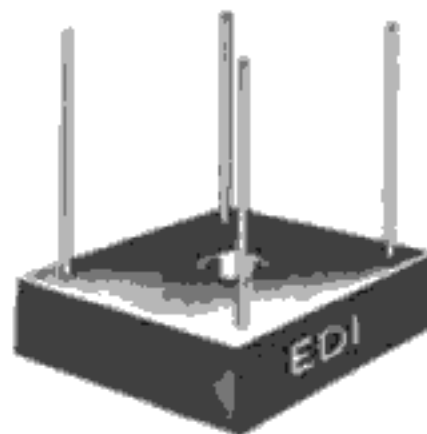




SINGLE-PHASE FULL WAVE BRIDGE
2.0 AMPERES FOR P.C. BOARD MOUNTING
3.0 AMPERES HEAT SINK MOUNTING



PV SERIES

PRV/leg	50V	100V	200V	400V	600V	800V	1000V
Type No.	PV05	PV10	PV20	PV40	PV60	PV80	PV100

ELECTRICAL CHARACTERISTICS PER LEG
(at $T_A=25^\circ\text{C}$ Unless Otherwise Specified)

Max. Forward Voltage Drop, $V_F=1.0\text{V} @ I_F =$	1.0	Amp
Max. DC Reverse Current @ PRV and 25°C , I_R	10.0	μA
Max. Peak Surge Current, I_{FSM} (8.3ms)	50	Amp
Ambient Operating Temperature Range, T_A	-55 to +150	$^\circ\text{C}$
Storage Temperature Range, T_{STG}	-55 to +150	$^\circ\text{C}$

NOTE:

Maximum lead and terminal temperature for soldering, 3/8 inch from case, 5 seconds at 250°C

EDI reserves the right to change these specifications at any time without notice.

Figure 1
PV SERIES CURRENT DERATING

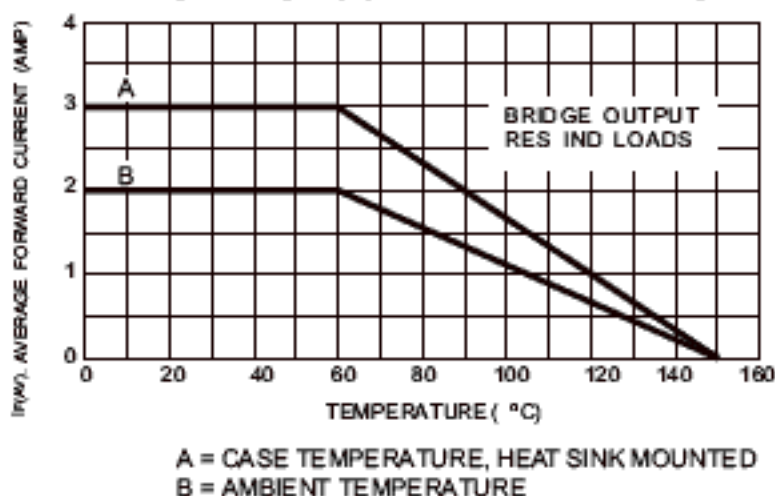


Figure 2
NON-REPETITIVE SURGE CURRENT

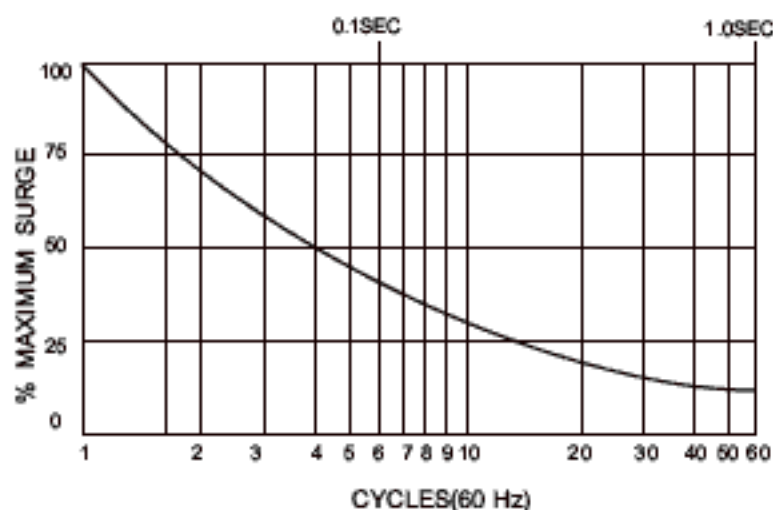
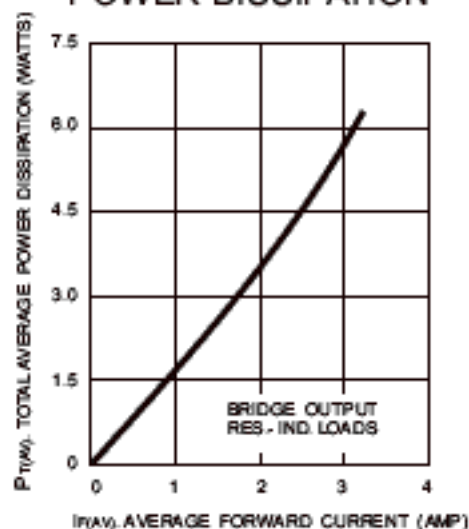
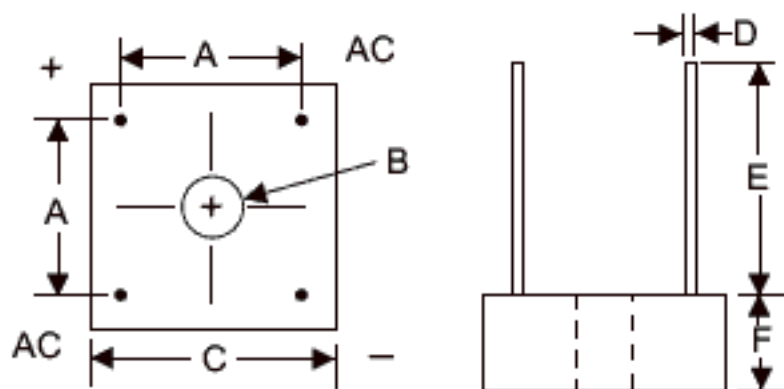


Figure 3
POWER DISSIPATION



PV SERIES MECH. OUTLINE



LTR	INCHES	MILLIMETERS
A	.411-.441	10.44-11.20
B	.137-.167DIA	3.48-4.24DIA
C	.590-.610	14.99-15.49
D	.038-.042	.97-1.07
E	.750MIN	19.05MIN
F	.300MAX	7.62MAX

NOTE: 1. A thin film of silicone thermal compound is recommended between the bridge case and mounting surface for improved thermal conduction.