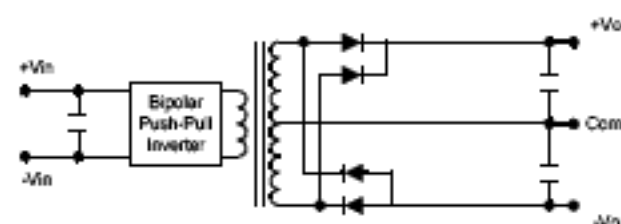
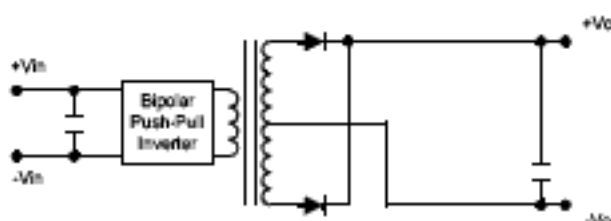
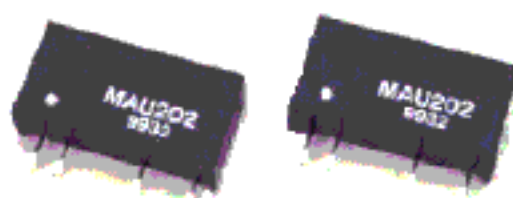


# TOTAL POWER INT'L

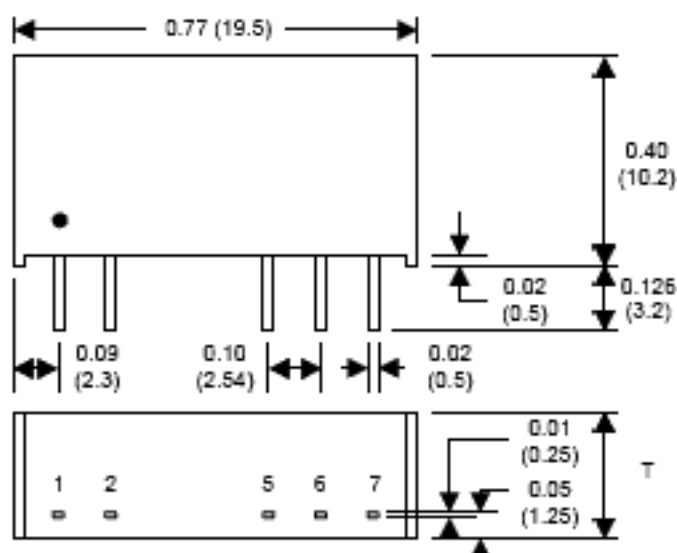
## MAU200 Series 1 Watt Ultra Miniature High Isolation SIP DC/DC Single & Dual Output

### Key Features

- SMT Technology
- Miniature Package
- I/O Isolation 3000VDC
- Efficiency Up To 81%
- MTBF > 2,000,000 Hours
- Low Cost



### Mechanical Configuration



All dimensions typical in inches (mm). Tolerance = +/- 0.01 (+/- 0.25)

### Pin Connections

Pin	Single Output	Dual Output
1	+Input	+Input
2	-Input	-Input
5	-Output	-Output
6	No Pin	Common
7	+Output	+Output

### Physical Characteristics

<b>Case Size (5 &amp; 12V Input)</b>	19.5x6.1x10.2 mm 0.77x0.24x0.40 inches
<b>Case Size (24V Input)</b>	19.5x7.1x10.2 mm 0.77x0.28x0.40 inches
<b>Case Material</b>	Non-Conductive Black Plastic
<b>Weight</b>	2.1g (5 & 12V Input) 2.6g (24V Input)

# TOTAL POWER INT'L

## TOTAL POWER INT'L MAU200

Parameter		Min.	Max.	Unit.
Input Surge Voltage ( 1000 mS )	5VDC Input Models	-0.7	9	VDC
	12VDC Input Models	-0.7	18	VDC
	24VDC Input Models	-0.7	30	VDC
Internal Power Dissipation		---	450	mW

### Model Selection Guide

Model Number	Input voltage VDC	Output Voltage VDC	Output Current mA (Max.)	Output Current mA (Min.)	Input Current Max. Load mA (Typ.)	Input Current No Load mA (Typ.)	Load Regulation % (Max.)	Efficiency % (Typ.)
MAU201	5 (4.5 ~ 5.5)	3.3	260	5	235	30	10	73
MAU202		5	200	4	281		10	71
MAU203		9	110	2	260		8	76
MAU204		12	84	1.5	258		7	78
MAU205		15	67	1	258		7	78
MAU206		±5	±100	±2	278		10	72
MAU207		±9	±56	±1	262		8	77
MAU208		±12	±42	±0.8	258		7	78
MAU209		±15	±34	±0.7	258		7	79
MAU211		12 (10.8 ~ 13.2)	3.3	260	5		96	12
MAU212	5		200	4	114	8	73	
MAU213	9		110	2	106	5	78	
MAU214	12		84	1.5	105	5	80	
MAU215	15		67	1	104	5	80	
MAU216	±5		±100	±2	113	8	74	
MAU217	±9		±56	±1	106	5	79	
MAU218	±12		±42	±0.8	104	5	81	
MAU219	±15		±34	±0.7	105	5	81	
MAU221	24 (21.6 ~ 26.4)		3.3	260	5	49	7	
MAU222		5	200	4	59	8		71
MAU223		9	110	2	54	5		76
MAU224		12	84	1.5	54	5		78
MAU225		15	67	1	53	5		79
MAU226		±5	±100	±2	58	8		72
MAU227		±9	±56	±1	55	5		76
MAU228		±12	±42	±0.8	53	5		79
MAU229		±15	±34	±0.7	53	5		80

Specifications typical at  $T_a = +25^\circ\text{C}$ , resistive load, nominal input voltage, rated output current unless otherwise noted.

TOTAL POWER INT'L Tel: 877-646-0900 Fax: 978-453-7395  
 Email: sales@total-power.com http://www.total-power.com

# TOTAL POWER INT'L MAU200

## Environmental Specifications

Parameter	Conditions	Min.	Typ.	Max.	Unit
Operating Temperature		-25	---	+85	°C
Storage Temperature		-40	---	+125	°C
Humidity		---	---	95	%
Cooling	Free-Air Convection				

## Input Specifications

Parameter	Model	Min.	Typ.	Max.	Unit
Input Voltage Range	5V Input Models	4.5	5	5.5	VDC
	12V Input Models	10.8	12	13.2	
	24V Input Models	21.6	24	26.4	
Reverse Polarity Input Current	All Models	---	---	0.3	A
Input Filter		Internal Capacitor			

## Output Specifications

Parameter	Conditions	Min.	Typ.	Max.	Unit
Output Voltage Accuracy		---	±1.0	±3.0	%
Output Voltage Balance	Dual Output Balance Load	---	±0.1	±1.0	%
Line Regulation	For Vin Change 1%	---	±1.2	±1.5	%
Load Regulation	Io=20% to 100%	See Model Selection Guide			%
Ripple & Noise (20MHz)		---	65	100	mV P-P
Ripple & Noise (20MHz)	Over Line, Load & Temp.	---	---	150	mV P-P
Ripple & Noise (20MHz)		---	---	5	mV rms.
Over Load		120	---	---	%
Temperature Coefficient		---	±0.01	±0.02	%/°C
Output Short Circuit	0.5 Second Max.				

## General Specification

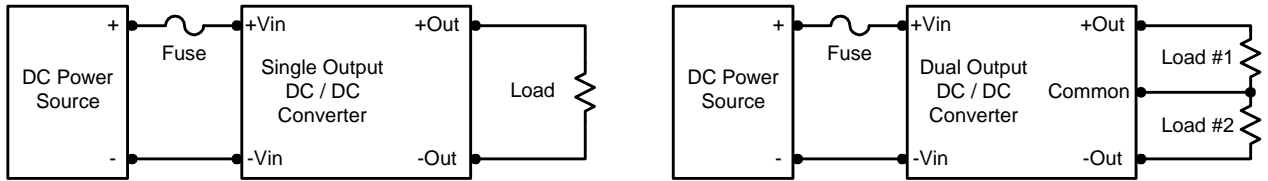
Parameter	Conditions	Min.	Typ.	Max.	Unit
Rated Isolation Voltage	60 Seconds	3000	---	---	VDC
Isolation Resistance	500VDC	10	---	---	GΩ
Isolation Capacitance	100KHz, 1V	---	60	100	pF
Switching Frequency		70	100	120	KHz

## Input Fuse Selection Guide

5V Input Models	12V Input Models	24V Input Models
500mA Slow – Blow Type	200mA Slow – Blow Type	100mA Slow – Blow Type

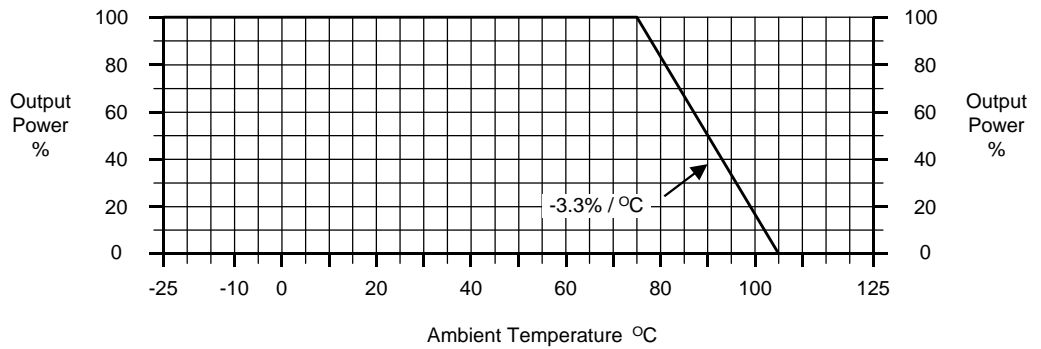
# TOTAL POWER INT'L MAU200

## Typical Applications

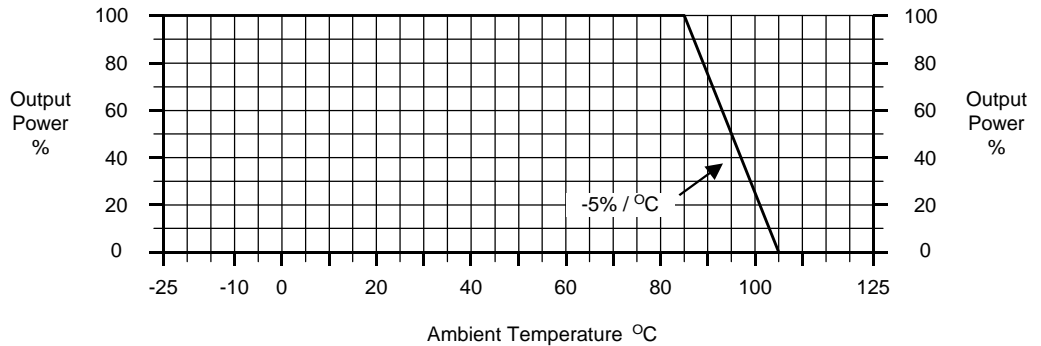


## Derating Curve

**3.3, 5 & { 5V Only**



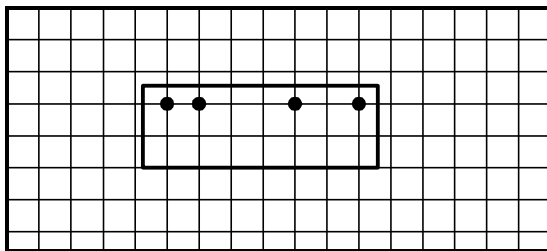
**All Other Output**



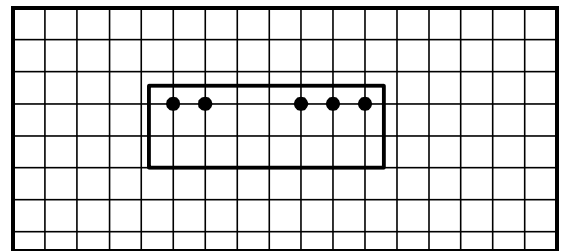
## Connecting Pin Patterns

(2.54 mm / 0.1 inch grids)

**Single Output**



**Dual Output**



## NOTE:

1. Specifications typical at  $T_a = +25^\circ\text{C}$ , resistive load, nominal input voltage, rated output current unless otherwise noted.
2. Other input and output voltage may be available, Please contact factory.
3. Specifications subject to change without notice.

TOTAL POWER INT'L Tel: 877-646-0900 Fax: 978-453-7395

Email: [sales@total-power.com](mailto:sales@total-power.com) <http://www.total-power.com>