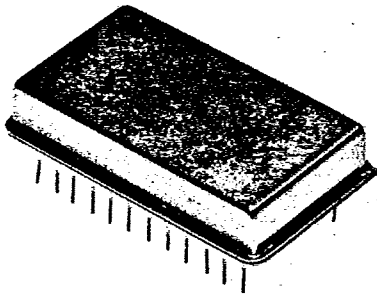


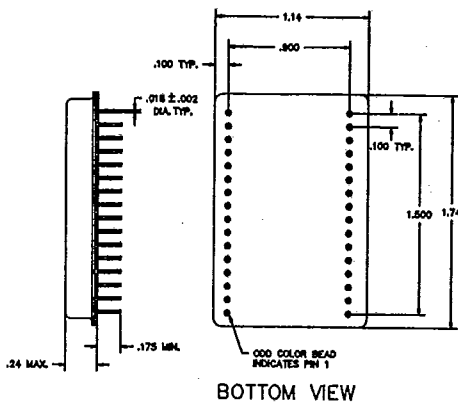
ATN-1053



10-500 MHz 6 Step Digital Attenuator

- 6 Line TTL Control
- Excellent Stability Over Temperature
- Hermetic Enclosure
- Low Insertion Loss
- High Speed Switching

Outline Drawing



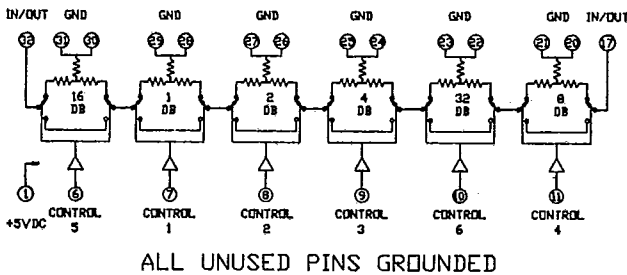
Absolute Maximum Ratings

Ambient Operating Temperature -54°C to + 100°C
 Storage Temperature -65°C to + 125°C
 Maximum DC Voltage + 7 Volts

Electrical Specifications @ 25°C

| PARAMETER | TYP. | MIN. | MAX. |
|-----------------------|--------|--------|--------|
| Frequency (MHz) | --- | 10-500 | --- |
| Insertion Loss | 6.0dB | --- | 8.0dB |
| Steps | | | |
| 1.0dB | --- | 0.8dB | 1.2dB |
| 2.0dB | --- | 1.8dB | 2.2dB |
| 4.0dB | --- | 3.8dB | 4.2dB |
| 8.0dB | --- | 7.8dB | 8.2dB |
| 16.0dB | --- | 15.7dB | 16.3dB |
| 32.0dB | --- | 31.0dB | 33.0dB |
| TOTAL 63.0dB | --- | 60.9dB | 65.2dB |
| VSWR | 1.25:1 | --- | 1.3:1 |
| Switching Speed | 45nsec | --- | 50nsec |
| RF Power-Operational | --- | --- | +13dBm |
| RF Power-Non-Destruct | --- | --- | +27dBm |
| DC Power +5 Volts | 350ma | --- | 500ma |

Schematic Diagram



6 Line TTL, Load Factor 1

SWITCHING CONDITIONS

LOGIC 1-Attenuation in

Typical Performance

