

### MICROWAVE SEMICONDUCTOR TECHNICAL DATA

### JS9768-AS (CHIP FORM)

#### FEATURES

- High Output Power  
P1dB=25.0dBm
- High Power Gain  
G1dB=13dB
- 50 Ω Input / Output Broadband Matched  
@ f=24.5-26.5GHz.

#### ABSOLUTE MAXIMUM RATINGS(Ta=25°C)

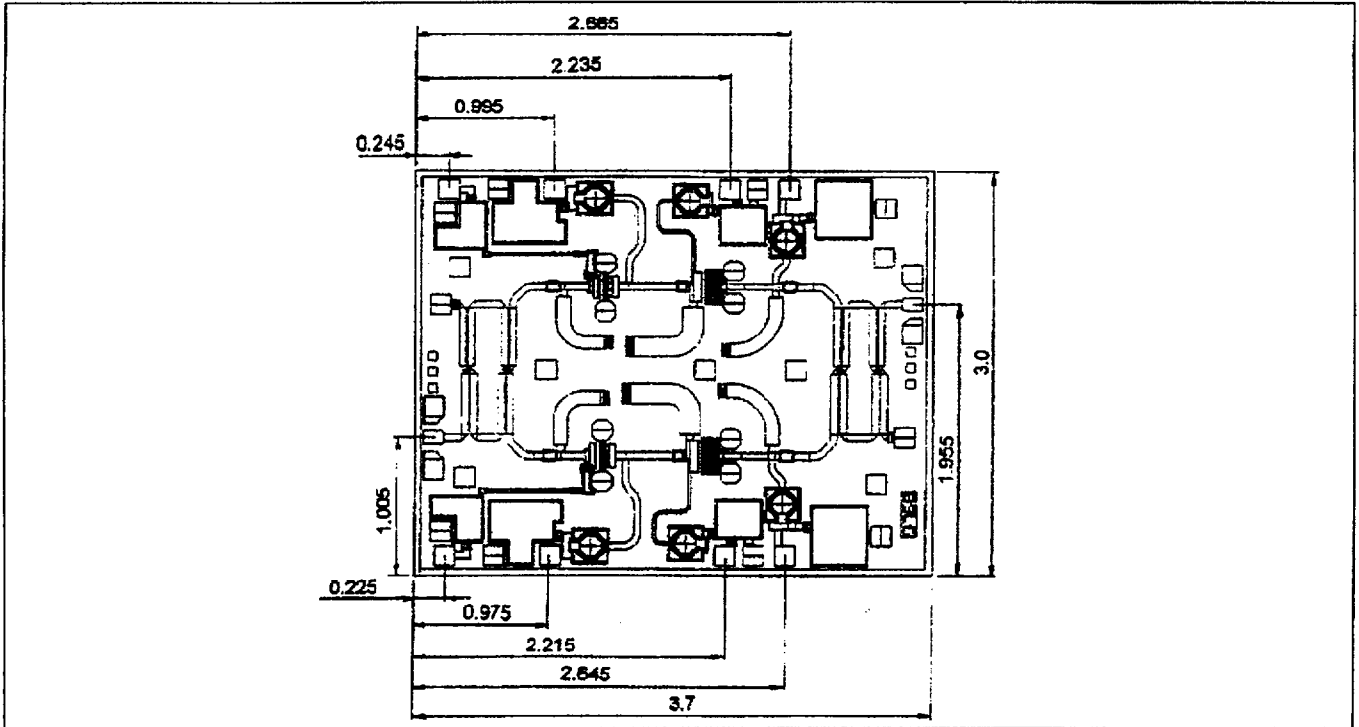
CHARACTERISTICS	SYMBOL	UNIT	RATINGS
DRAIN SUPPLY VOLTAGE	VDD	V	11
GATE SUPPLY VOLTAGE	VGG	V	-5
INPUT POWER	Pin	dBm	16
FLANGE TEMPERATURE	Tf	°C	-30 - +80
STORAGE TEMPERATURE	Tstg	°C	-65+ - 175

#### RF PERFORMANCE SPECIFICATIONS (Ta=25 °C)

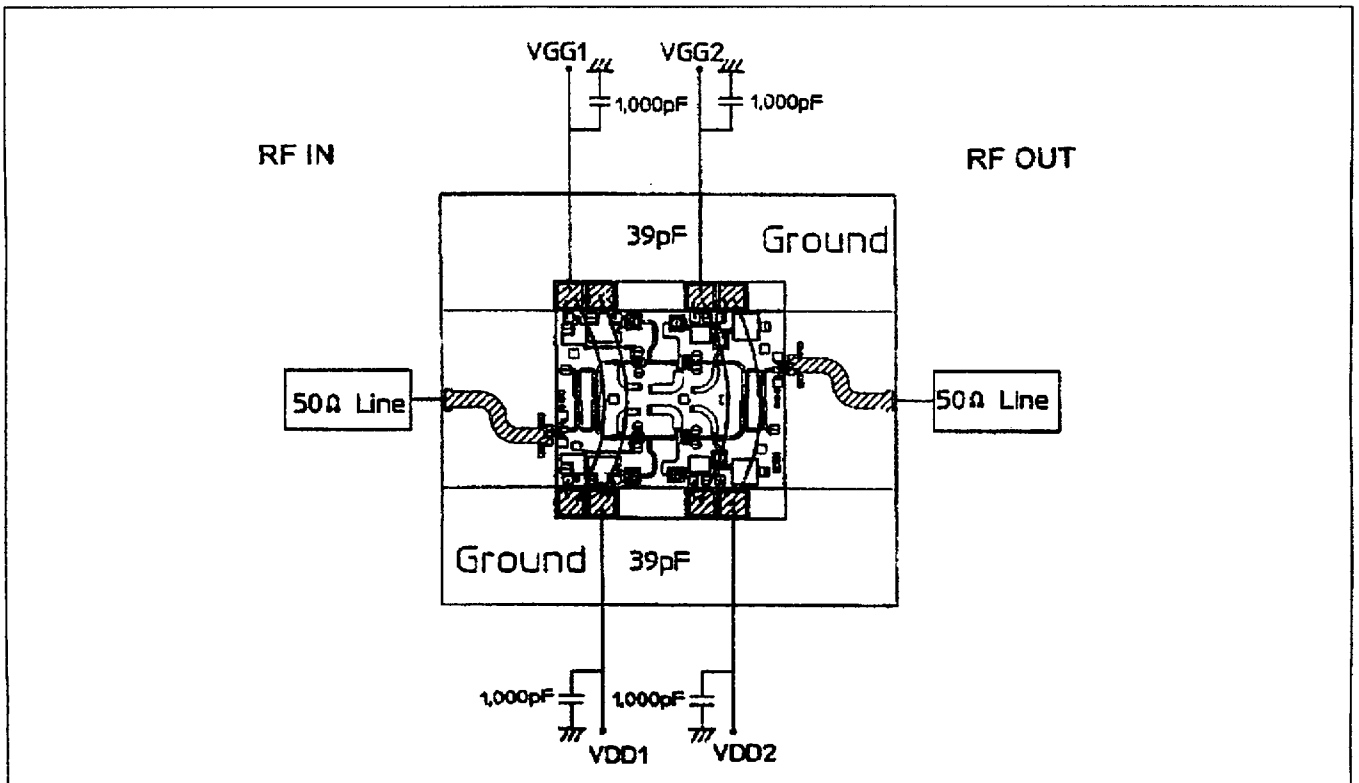
CHARACTERISTICS	SYMBOL	CONDITION	UNIT	MIN.	TYP.	MAX.
Operating Frequency	f		GHz	24.5	—	26.5
Output Power at 1dB Gain Compression Point	P1dB	VDD=6V VGG ≈ -0.3V IDD RFoff ≈ 500mA	dBm	23.0	25.0	—
Power Gain at 1dB Gain Compression Point	G1dB		dB	11.0	13.0	—
Drain Current	IDD		mA	—	510	700
VSWRin(small signal)	VSWRin			—	1.7	1.9
VSWRout(small signal)	VSWRout			—	1.7	1.9

- ◆ The information contained herein is presented only as a guide for the applications of our products. No responsibility is assumed by TOSHIBA for any infringements of patents or other rights of the third parties which may result from its use. No license is granted by implication or otherwise under any patent or patent rights of TOSHIBA or others.
- ◆ The information contained herein may be changed without prior notice. It is therefore advisable to contact TOSHIBA before proceeding with design of equipment incorporating this product.

Chip Outline



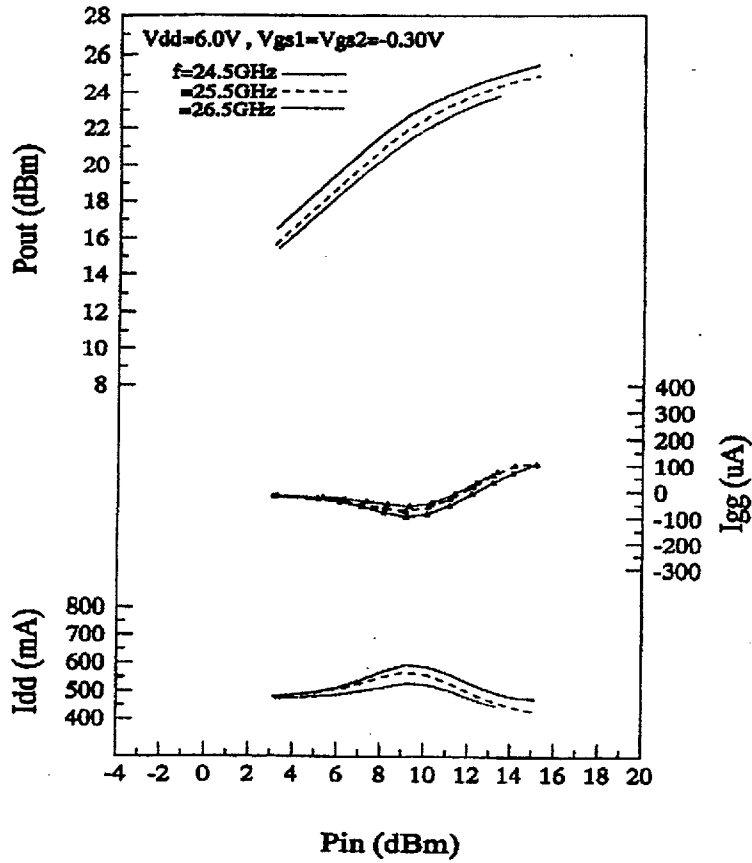
Recommended Bias Configuration



**Assembly Precautions For Chip**

The operations must be performed in a clean and dry environment. The chips must be kept in the same environment when they are not used. All test instruments, assembly machines, benches, tweezers and operators should be grounded to avoid damage due to electronic discharge. Careful attention must be paid in handling chips with tweezers because GaAs is more brittle than Si.

**Typical RF Performance**



Typical RF Performance(Cont'd)

