

SERIES 605 10-TAPS 14 PIN FAST LOGIC DELAY MODULES-REDUCED SIZE

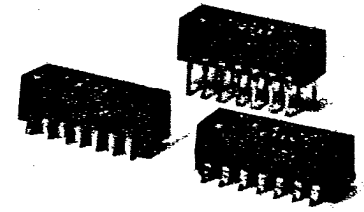
- 14 Pin DIP and Surface Mount Packages • TTL and DTL Compatible • 5 Equally Spaced Taps

Specifications:

- Supply Voltage : 4.75 to 5.25VDC
- Logic 1 Input Current : 100µA Max
- Logic 0 Input Current : -1.6mA Max
- Logic 1 Volt Out : 2.5V Min
- Logic 0 Volt Out : 0.5V Max
- Logic 1 Fan-Out : 25 Max
- Logic 0 Fan-Out : 12.5 Max
- Output Rise Time⁽²⁾ : 2NSEC TYP.
- Operating Temp Range : 0°C to 70°C
- Temperature Coefficient : 100 PPM/°C

Input Test Conditions:

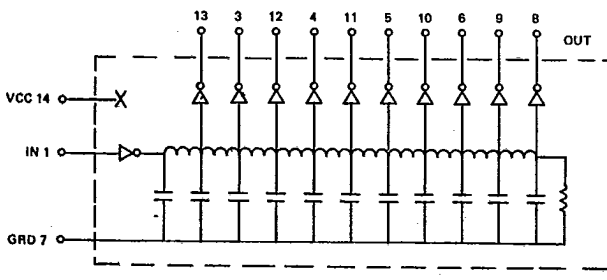
- Input Pulse Voltage : 3.2V
- Input Rise Time : ≤2NS
- Pulse Width : 40% of Total Delay
- Supply Current ICCL* : 50 mA
- ICCH* : 15 mA



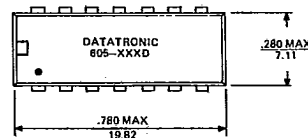
Electrical Specifications at 25°C (Measured with no Loads on Taps)

Part Number			Total Delay Nanosecond (1)	Tap To Tap Delay NSEC (1)
Type D	Type W	Type J		
605-10D*	605-10W*	605-10J*	9±1.0	1±0.4
605-15D*	605-15W*	605-15J*	13.5±1.2	1.5±0.5
605-20D*	605-20W*	605-20J*	18±1.5	2±0.5
605-25D*	605-25W*	605-25J*	22.5±2	2.5±0.7
605-50D*	605-50W*	605-50J*	50±2.5	5±1.5
605-100D*	605-100W*	605-100J*	100±5	10±2
605-150D*	605-150W*	605-150J*	150±7.5	15±2
605-200D	605-200W	605-200J	200±10	20±2
605-250D	605-250W	605-250J	250±15.5	25±2.5
605-300D	605-300W	605-300J	300±15	30±3
605-400D	605-400W	605-400J	400±20	40±4
605-500D	605-500W	605-500J	500±25	50±5

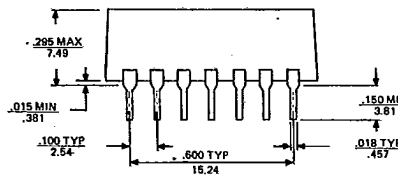
Note: (1) Measured at 1.5v level leading edge.
 (2) Measured from 0.75v to 2.4v.
 *Time delay referenced to 1st Tap.



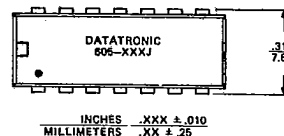
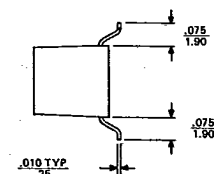
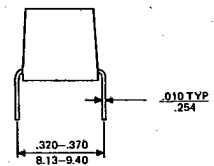
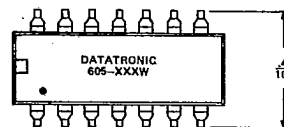
SCHEMATIC



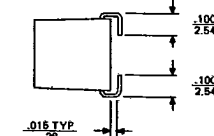
TYPE D



TYPE W



TYPE J



INCHES .XXX ± .010
MILLIMETERS .XX ± .25